

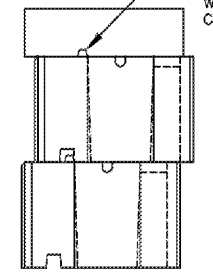
VERSA-LOK NEXUS UNIT
SCALE: 1/2" = 1'

THESE PRELIMINARY DETAILS ARE INTENDED AS AN AID IN DESIGNING ATTRACTIVE, DURABLE RETAINING WALLS WITH VERSA-LOK UNITS. FINAL DETERMINATION OF THE SUITABILITY OF ANY INFORMATION OR MATERIAL FOR THE USE CONTEMPLATED, AND ITS MANNER OF USE, IS THE SOLE RESPONSIBILITY OF THE USER. A FINAL PROJECT SPECIFIC DESIGN SHOULD BE PREPARED BY A QUALIFIED, LICENSED, PROFESSIONAL ENGINEER.



UNIT DIMENSIONS	SCALE: 1/2"=1'
NEXUS UNIT	DATE: 10/2018

REMOVE STUDS PRIOR TO PLACING CAP UNITS. ADHERE CAP UNITS TO WALL UNITS WITH VERSA-LOK CONCRETE ADHESIVE

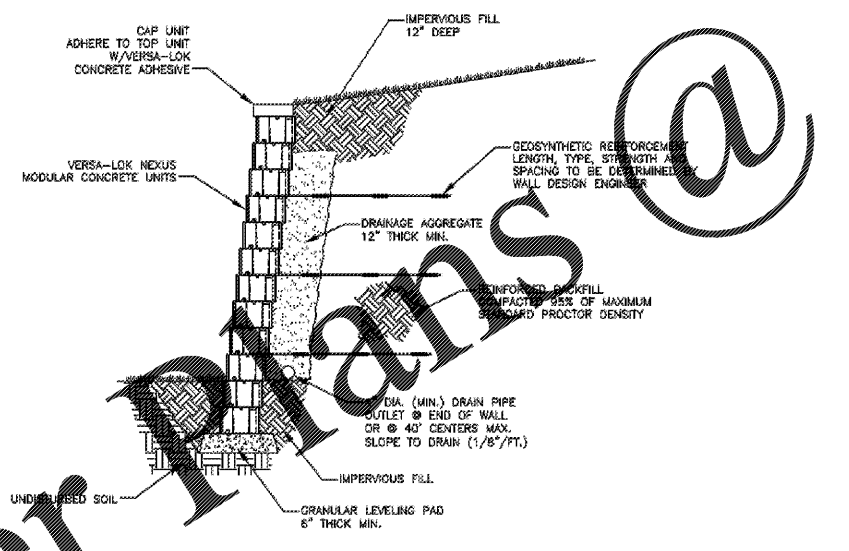


CAPPING DETAIL
NEXUS UNIT
SCALE: 1/2" = 1'

THESE PRELIMINARY DETAILS ARE INTENDED AS AN AID IN DESIGNING ATTRACTIVE, DURABLE RETAINING WALLS WITH VERSA-LOK UNITS. FINAL DETERMINATION OF THE SUITABILITY OF ANY INFORMATION OR MATERIAL FOR THE USE CONTEMPLATED, AND ITS MANNER OF USE, IS THE SOLE RESPONSIBILITY OF THE USER. A FINAL PROJECT SPECIFIC DESIGN SHOULD BE PREPARED BY A QUALIFIED, LICENSED, PROFESSIONAL ENGINEER.



CAPPING	SCALE: 1/2"=1'
NEXUS UNIT	DATE: 10/2018

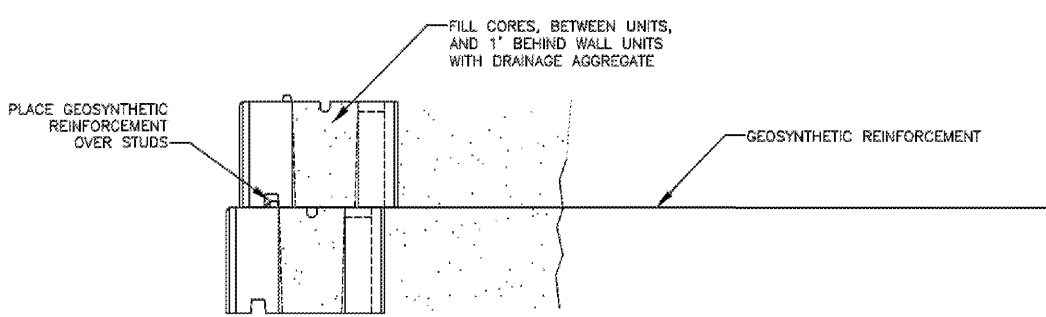


TYPICAL SECTION-REINFORCED RETAINING WALL
NEXUS UNIT
SCALE: 3/8" = 1'

THESE PRELIMINARY DETAILS ARE INTENDED AS AN AID IN DESIGNING ATTRACTIVE, DURABLE RETAINING WALLS WITH VERSA-LOK UNITS. FINAL DETERMINATION OF THE SUITABILITY OF ANY INFORMATION OR MATERIAL FOR THE USE CONTEMPLATED, AND ITS MANNER OF USE, IS THE SOLE RESPONSIBILITY OF THE USER. A FINAL PROJECT SPECIFIC DESIGN SHOULD BE PREPARED BY A QUALIFIED, LICENSED, PROFESSIONAL ENGINEER.



TYPICAL SECTION - REINFORCED	SCALE: 3/8"=1'
NEXUS UNIT	DATE: 10/2018



REINFORCEMENT PLACEMENT DETAIL
NEXUS UNIT
SCALE: 1/2" = 1'

THESE PRELIMINARY DETAILS ARE INTENDED AS AN AID IN DESIGNING ATTRACTIVE, DURABLE RETAINING WALLS WITH VERSA-LOK UNITS. FINAL DETERMINATION OF THE SUITABILITY OF ANY INFORMATION OR MATERIAL FOR THE USE CONTEMPLATED, AND ITS MANNER OF USE, IS THE SOLE RESPONSIBILITY OF THE USER. A FINAL PROJECT SPECIFIC DESIGN SHOULD BE PREPARED BY A QUALIFIED, LICENSED, PROFESSIONAL ENGINEER.



REINFORCEMENT PLACEMENT	SCALE: 1/2"=1'
NEXUS UNIT	DATE: 10/2018

Architect:
JOHN S. ... ARCHITECT
38 N. ...
SMITHTON, ILLINOIS 62211
PH: 618.232.2632
WWW.JOHNSDODD.COM
E-MAIL: JOHN@JOHNSDODD.COM

Civil Engineer:
RDC
REYLING DESIGN & CONSULTING
4516 Boardwalk | Smithton, IL | 62285
reylingdc@gmail.com



LICENSE EXPIRES - 12.31.2018
DATE SIGNED - 10.30.2018
ENGINEER OF RECORD:
Todd J. Reyling, PE
Georgia PE 041448

ISSUED / REVISED DATE
ISSUED FOR REVIEW 10.30.2018

PROJECT NUMBER: 18-163

New Ground Up Building:
DAIRY QUEEN
Alabama Ave. & Davis Road
Bremen, GA 30110
Carroll County

Construction
Details
C702