

**SANITARY SEWER KEY NOTES**

- 1 PROPOSED 6" PVC SDR-35 GREASE SANITARY SEWER SERVICE TO BUILDING AT INVERT = 1288.50 ±. SEE PLUMBING PLANS FOR CONNECTION INTO BUILDING.
- 2 PROPOSED 6" PVC SDR-35 SANITARY SEWER SERVICE TO BUILDING AT INVERT = 1288.50 ±. SEE PLUMBING PLANS FOR CONNECTION INTO BUILDING.
- 3 PROPOSED SANITARY SEWER CLEANOUT, SEE DETAIL.
- 4 PROPOSED 15 LF OF 6" PVC SDR-35 GREASE SANITARY SEWER LATERAL AT 2.00% MINIMUM.
- 5 PROPOSED 41 LF OF 6" PVC SDR-35 SANITARY SEWER LATERAL AT 2.73%.
- 6 PROPOSED 1,500 GALLON GREASE INTERCEPTOR. TOP ELEVATION 1292.60. SEE PLUMBING PLANS FOR DETAILS.
- 7 PROPOSED 114 LF OF 6" PVC SDR-35 SANITARY SEWER LATERAL AT 5.71%.
- 8 CONTRACTOR TO CONNECT PROPOSED 6" PVC SDR-35 SANITARY SEWER SERVICE TO EXIST SANITARY SEWER MANHOLE AT 1281.44±. CONTRACTOR TO COORDINATE WITH SANITARY SEWER DISTRICT FOR SERVICE AND CONNECTION.

**DRY UTILITY KEY NOTES**

- 1 PROPOSED ELECTRIC METER AND SERVICE STUB TO BUILDING. SEE ELECTRICAL PLANS FOR CONNECTION INTO BUILDING.
- 2 PROPOSED ELECTRICAL SERVICE FROM ELECTRIC METER TO ELECTRIC TRANSFORMER. CONTRACTOR TO COORDINATE WITH ELECTRIC COMPANY FOR SERVICE AND PLACEMENT.
- 3 PROPOSED PAD MOUNTED TRANSFORMER. CONTRACTOR TO COORDINATE WITH ELECTRIC COMPANY FOR SERVICE AND PLACEMENT.
- 4 PROPOSED UNDERGROUND ELECTRIC SERVICE FROM PROPOSED TRANSFORMER TO EXISTING POWER SOURCE. CONTRACTOR TO COORDINATE WITH ELECTRIC COMPANY FOR SERVICE.
- 5 EXISTING POWER SOURCE. CONTRACTOR TO COORDINATE WITH ELECTRIC COMPANY FOR SERVICE LOCATION.
- 6 PROPOSED TELEPHONE AND DATA SERVICE STUB TO BUILDING.
- 7 PROPOSED TELEPHONE AND DATA SERVICE. CONTRACTOR TO COORDINATE WITH UTILITY COMPANY FOR SERVICE.
- 8 EXISTING DATA/COMMUNICATION CONNECTION. CONTRACTOR TO COORDINATE WITH UTILITY COMPANY FOR SERVICE.
- 9 PROPOSED GAS SERVICE METER AND STUB TO BUILDING. SEE MECHANICAL PLANS FOR CONNECTION INTO BUILDING.
- 10 PROPOSED GAS SERVICE FROM NEW BUILDING TO EXISTING GAS MAIN. CONTRACTOR TO COORDINATE WITH GAS COMPANY FOR SERVICE.
- 11 EXISTING GAS MAIN CONNECTION. CONTRACTOR TO COORDINATE WITH GAS COMPANY FOR PROPOSED GAS LINE LOCATION AND TAP.

**NOTE:**  
ALL BUILDING POC SIZES AND LOCATIONS ARE FOR REFERENCE ONLY. CONTRACTOR TO CONSULT THE MECHANICAL, ELECTRICAL, AND PLUMBING ENGINEER TO CONFIRM EXACT BUILDING SIZES AND LOCATIONS.

**UTILITY INFORMATION:**

UNDERGROUND FACILITIES, STRUCTURES, AND UTILITIES HAVE BEEN PLOTTED FROM AVAILABLE SURVEYS AND RECORDS, AND THEREFORE DO NOT NECESSARILY REFLECT THE ACTUAL EXISTENCE, NON-EXISTENCE, SIZE, TYPE, NUMBER, OR LOCATION OF THESE FACILITIES, STRUCTURES, AND UTILITIES. THE CONTRACTOR SHALL BE RESPONSIBLE FOR VERIFYING THE ACTUAL LOCATION OF ALL UNDERGROUND FACILITIES, STRUCTURES, AND UTILITIES, EITHER SHOWN OR NOT SHOWN ON THESE PLANS. THE UNDERGROUND FACILITIES, STRUCTURES, AND UTILITIES SHALL BE LOCATED IN THE FIELD PRIOR TO ANY GRADING, EXCAVATION, OR CONSTRUCTION OF IMPROVEMENTS.



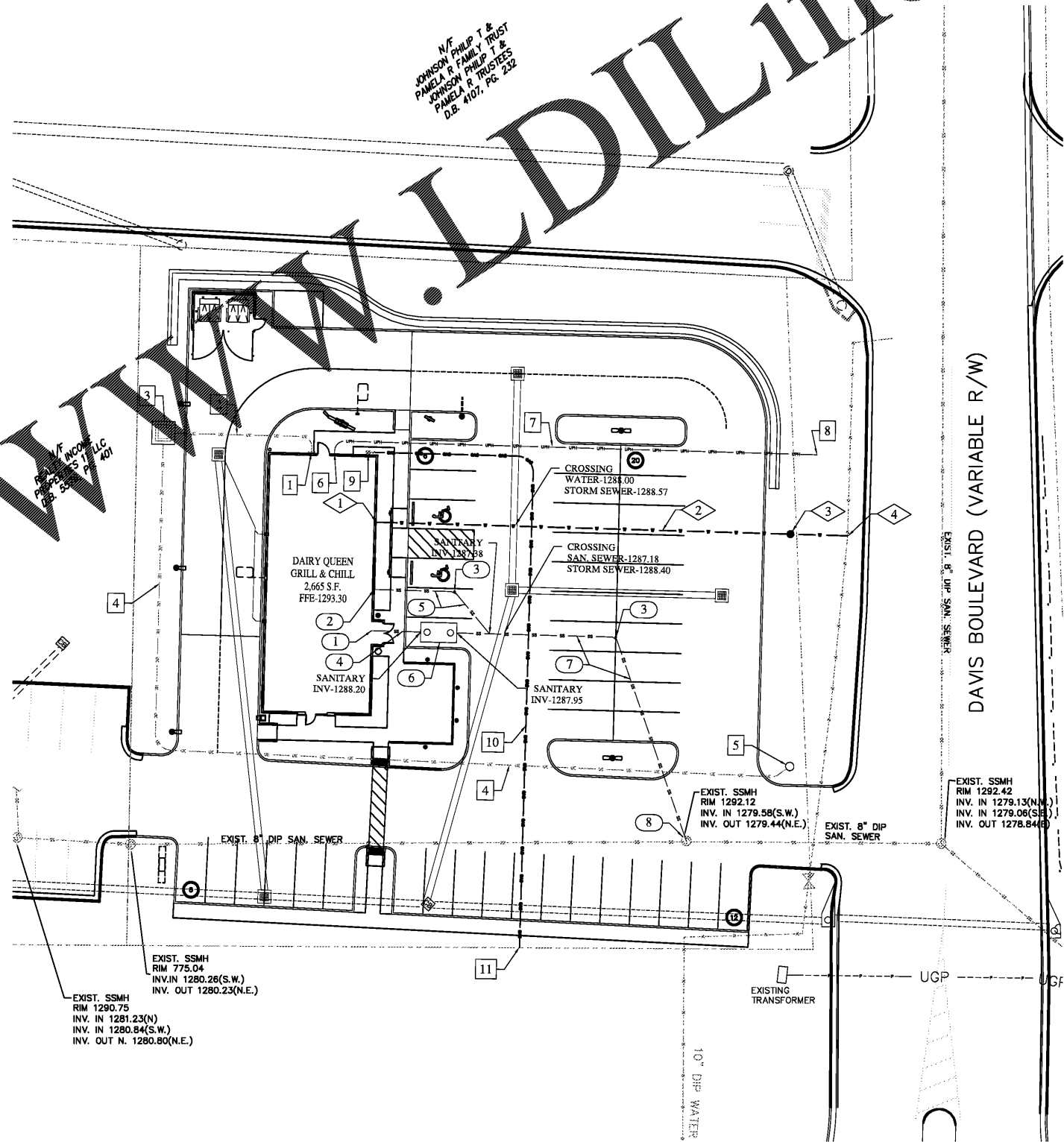
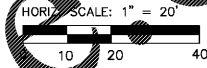
GEORGIA UTILITY LOCATION SERVICE  
PHONE: 800.82-7411 OR WWW.GEORGIA811.COM

**WATER KEY NOTES**

- 1 PROPOSED 1-1/2" DOMESTIC WATER SERVICE STUB INTO BUILDING. SEE PLUMBING PLANS FOR CONNECTION INTO BUILDING.
- 2 PROPOSED 1-1/2" DOMESTIC WATER LINE (FLEXIBLE TYPE "K" COPPER) TO BUILDING. MINIMUM BURY DEPTH 54" BELOW FINISHED GRADE.
- 3 PROPOSED 1-1/2" DOMESTIC WATER METER. CONTRACTOR TO COORDINATE CONNECTION TO EXISTING METER AND SERVICE WITH WATER COMPANY.
- 4 PROPOSED 1-1/2" DOMESTIC WATER TAP. CONTRACTOR TO COORDINATE WITH WATER COMPANY FOR LOCATION AND SERVICE.

**UTILITY CONTACTS**

WATER:	CITY OF BREMEN 770.537.5782
ELECTRIC:	GEORGIA POWER COMPANY 770.537.2679
GAS:	GEORGIA NATURAL GAS 877.850.6200
SANITARY SEWER:	CITY OF BREMEN 770.537.4873
STORM SEWER:	CITY OF BREMEN 770.537.5780
COMMUNICATIONS:	SYNCGLOBAL TELECOM 770.537.1410



N/E JOHNSON PHIP T & PAMELA R FAMILY TRUST  
N/E JOHNSON PHIP T & PAMELA R TRUSTES  
D.B. #107, PG. 232

@

Order Plans

Architect:  
JOHN S. ... ARCHITECT  
38 N. ... ESTATES  
PH. 1-770-282-2832  
WWW.JOHNSONPHIP.COM  
E-MAIL: JPHIP@JOHNSONPHIP.COM

Civil Engineer:  
**RDC**  
REYLING DESIGN & CONSULTING  
4516 Boardwalk | Smithton, IL | 62285  
reylngdc@gmail.com

GEORGIA REGISTERED  
No. PE041448  
PROFESSIONAL ENGINEER  
TODD JEFFREY REYLING

LICENSE EXPIRES - 12.31.2018  
DATE SIGNED - 10.30.2018

ENGINEER OF RECORD:  
Todd J. Reyling, PE  
Georgia PE 041448

ISSUED / REVISED DATE  
ISSUED FOR REVIEW 10.30.2018

PROJECT NUMBER: 18-163

New Ground Up Building:  
**DAIRY QUEEN**  
Alabama Ave. & Davis Road  
Bremen, GA 30110  
Carroll County

Site Utility Plan  
C500