

**EXISTING CONDITIONS/DEMOLITION PLAN NOTES:**

CONTRACTOR SHALL BE RESPONSIBLE FOR THE REMOVAL AND/OR PROTECTION OF THE EXISTING ITEMS AS NOTED ON THIS PLAN.

THE CONTRACTOR SHALL TAKE ALL PRECAUTIONS NECESSARY TO AVOID PROPERTY DAMAGE TO ADJACENT PROPERTIES DURING THE CONSTRUCTION PHASES OF THIS PROJECT. THE CONTRACTOR WILL BE HELD SOLELY RESPONSIBLE FOR ANY AND ALL DAMAGES.

CONTRACTOR IS TO DISPOSE OF ALL MATERIAL RESULTING FROM PREVIOUS AND CURRENT DEMOLITION IN ACCORDANCE WITH ALL LOCAL, STATE, AND/OR FEDERAL REGULATIONS.

THE CONTRACTOR IS CAUTIONED TO LOCATE ALL EXISTING UTILITIES AND CONFLICTS. CONTRACTOR SHALL CONTACT THE APPROPRIATE UTILITY COMPANIES AT LEAST 72 HOURS BEFORE ANY CONSTRUCTION ACTIVITY IN ORDER TO FIELD VERIFY EXISTING UTILITY INFORMATION.

CONTRACTOR SHALL PROTECT EXISTING STREET LIGHTS & POSTS, TRAFFIC CONTROL DEVICES, SIGNS, UTILITY BOXES, ELECTRIC, TELEPHONE, GAS, FIBER OPTIC, CABLE, WATER, STORM SEWER, SANITARY SEWER, AND ALL OTHER UTILITIES UNLESS OTHERWISE NOTED ON THE PLANS.

CONTRACTOR TO CLEAR AND GRUB THE EXISTING SITE AS NECESSARY TO PERFORM DEMOLITION, PROPOSED CONSTRUCTION, AND FINAL IMPROVEMENTS.

**EXISTING CONDITIONS KEY NOTES:**

- 1 — EXISTING UTILITY LINES TO REMAIN, CONTRACTOR TO PROTECT IN PLACE.
- 2 — EXISTING ROADWAY TO REMAIN, CONTRACTOR TO PROTECT IN PLACE.
- 3 — EXISTING WATER LINE AND FIRE HYDRANT TO REMAIN, CONTRACTOR TO PROTECT IN PLACE.
- 4 — EXISTING TRANSFORMER TO REMAIN, CONTRACTOR TO PROTECT IN PLACE.
- 5 — EXISTING SANITARY SEWER AND MANHOLE TO REMAIN, CONTRACTOR TO PROTECT IN PLACE.
- 6 — EXISTING GAS LINE TO REMAIN. CONTRACTOR TO PROTECT IN PLACE.
- 7 — EXISTING STORM SEWER TO REMAIN. CONTRACTOR TO PROTECT IN PLACE.

**DEMOLITION LEGEND/KEY NOTES:**

- CLEAR AND GRUB AREAS OF PROPOSED GRADING. REFER TO GEOTECHNICAL REPORT FOR ALL SPECIFICATIONS.
- SAWCUT PAVEMENT AND CONFORM TO A CLEAN, NEAT EDGE. CONTRACTOR TO COORDINATE WITH CITY BEFORE REMOVAL.
- LIMITS OF DISTURBANCE, CLEARING AND GRUBBING, AND SOIL STRIPPING.

**UTILITY INFORMATION:**

UNDERGROUND FACILITIES, STRUCTURES, AND UTILITIES HAVE BEEN PLOTTED FROM AVAILABLE SURVEYS AND RECORDS, AND THEREFORE DO NOT NECESSARILY REFLECT THE ACTUAL EXISTENCE, NON-EXISTENCE, SIZE, TYPE, NUMBER, OR LOCATION OF THESE FACILITIES, STRUCTURES, AND UTILITIES. THE CONTRACTOR SHALL BE RESPONSIBLE FOR VERIFYING THE ACTUAL LOCATION OF ALL UNDERGROUND FACILITIES, STRUCTURES, AND UTILITIES, EITHER SHOWN OR NOT SHOWN ON THESE PLANS. THE UNDERGROUND FACILITIES, STRUCTURES, AND UTILITIES SHALL BE LOCATED IN THE FIELD PRIOR TO ANY GRADING, EXCAVATION, OR CONSTRUCTION OF IMPROVEMENTS.

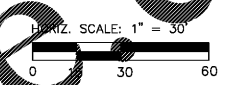
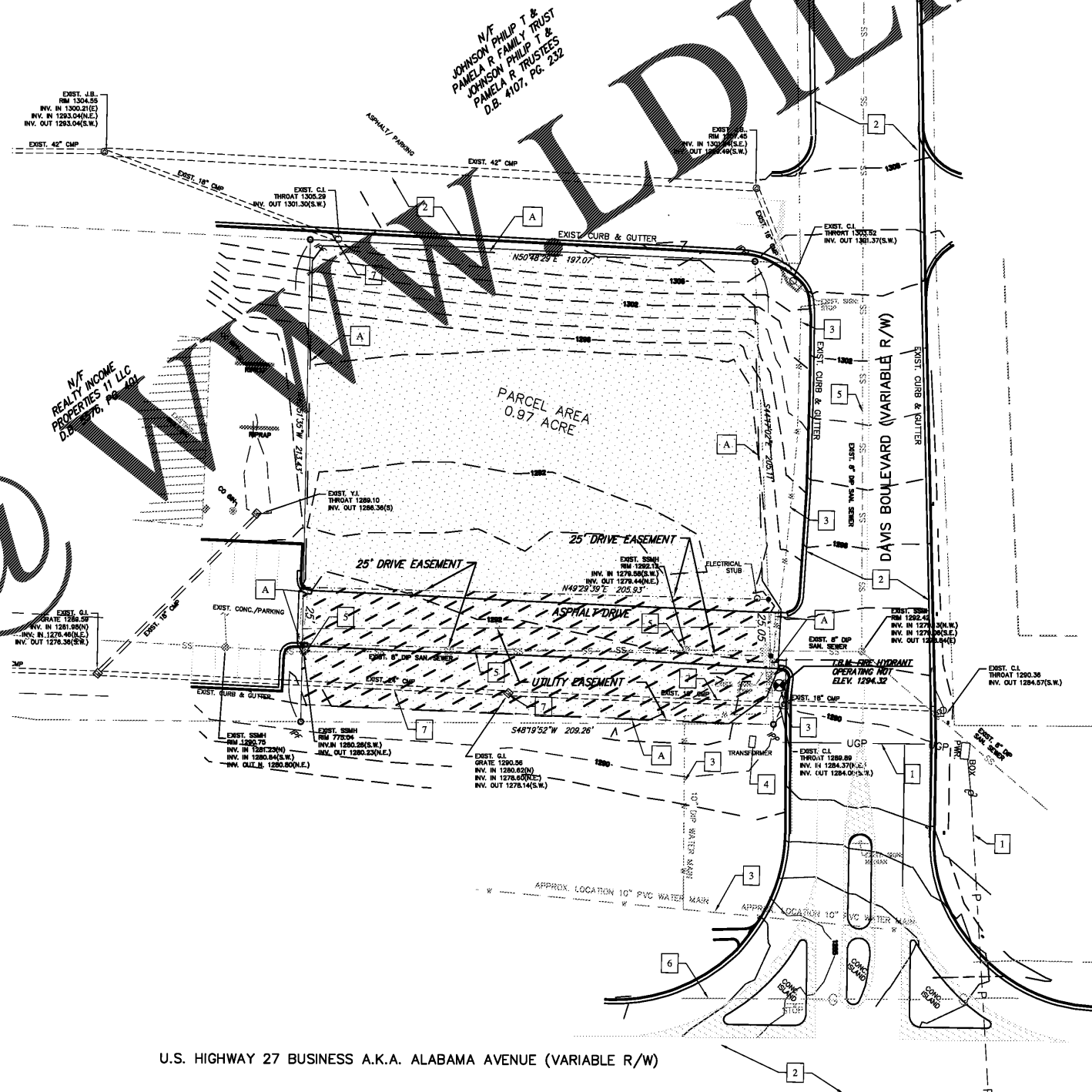


Know what's below. Call before you dig.

GEORGIA UTILITY LOCATION SERVICE  
PHONE: 800-282-7411 OR WWW.GEORGIA811.COM

**BENCHMARK INFO**

TBM: OPERATING NUT ON FIRE HYDRANT ON THE WEST SIDE OF DAVIS ROAD  
ELEV. = 1294.32



Architect:  
**JDA**  
JOHN S. JAMES, ARCHITECT  
38 N. WILSON ROAD, SUITE 202  
DUBLIN, GA 31001  
TEL: 404.487.2632  
WWW.JDAARCHITECT.COM  
E-MAIL: JAMES@JDAARCHITECT.COM

Civil Engineer:  
**RDC**  
REYLING DESIGN & CONSULTING  
4516 Boardwalk | Smithton, IL | 62285  
reylngdc@gmail.com



LICENSE EXPIRES - 12.31.2018  
DATE SIGNED - 10.30.2018

ENGINEER OF RECORD:  
Todd J. Reyling, PE  
Georgia PE 041448

ISSUED / REVISED	DATE
ISSUED FOR REVIEW	10.30.2018

PROJECT NUMBER: 18-163

New Ground Up Building:  
**DAIRY QUEEN**  
Alabama Ave. & Davis Road  
Bremen, GA 30110  
Carroll County

Existing  
Topography  
and Demolition  
Plan  
**C100**

U.S. HIGHWAY 27 BUSINESS A.K.A. ALABAMA AVENUE (VARIABLE R/W)

Order Plans @ WWW.DIline.com