



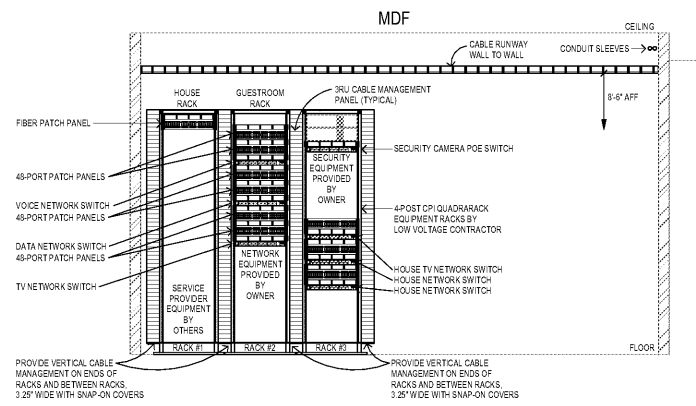
**RULE JOY TRAMMELL RUBIO ARCHITECTURE INTERIOR DESIGN**  
 300 Galleria Parkway Suite 740 Atlanta, Georgia 30329  
 770-661-1492 (phone) 770-661-1493 (fax)  
 www.rjtdesign.com

LOW VOLTAGE SYMBOLS LEGEND	
SYMBOL	DESCRIPTION
W	WALL MOUNT TELEPHONE
▽	DATA OUTLET
▽	TELEPHONE DATA OUTLET
▽	4-PORT TELEPHONE DATA OUTLET
WAP	WIRELESS ACCESS POINT
▽	TELEVISION OUTLET
IIIIII	LADDER RACK
IIIIII	CABLE TRAY
◇	DOOR CONTACT
◇	ELECTRIC STRIKE
◇	REQUEST TO EXIT DEVICE
◇	VIDEO SURVEILLANCE CAMERA
◇	CARD READER
◇	DURESS PUSHBUTTON
◇	MAGNETIC LOCK
◇	INTERCOM

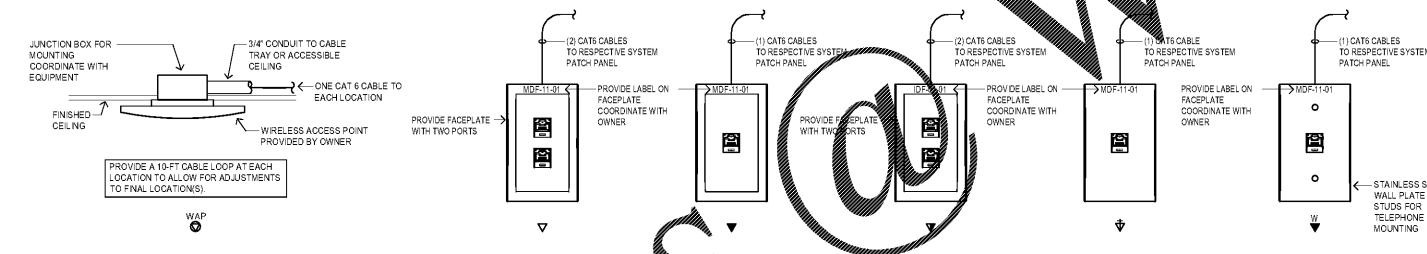
SHEET INDEX	
T001	LOW VOLTAGE SYSTEMS - SYMBOLS LEGEND, SCHEDULES, AND DETAILS
T002	LOW VOLTAGE SYSTEMS DETAILS
T101	LEVEL ONE FLOOR PLAN - LOW VOLTAGE SYSTEMS
T102	LEVEL TWO FLOOR PLAN - LOW VOLTAGE SYSTEMS
T103	LEVEL THREE AND FOUR FLOOR PLAN - LOW VOLTAGE SYSTEMS

DATA OUTLET SCHEDULE				
SYMBOL	DESCRIPTION	COLOR	FACEPLATE	CATALOG
▽	PROVIDE FACEPLATE WITH SINGLE KNOCK OUT FOR TELE DATA OUTLET (1) CAT6 CABLES TO IT ROOM.	WHITE	[Symbol]	LEVITON OR EQUAL
2 ▽	PROVIDE FACEPLATE WITH TWO (OR QUANTITY AS INDICATED) KNOCK OUTS. ONE BLANK AND TWO CAT6 CONNECTIONS FOR TELE DATA OUTLET (2) CAT6 CABLES TO IT ROOM.		[Symbol]	LEVITON OR EQUAL
▽	PROVIDE FACEPLATE WITH SINGLE KNOCK OUTS. TWO CONNECTIONS FOR TELE DATA OUTLET AND ONE FOR CAT6 CABLES TO IT ROOM.	WHITE	[Symbol]	LEVITON OR EQUAL
▽	PROVIDE FACEPLATE WITH SINGLE KNOCK OUT FOR TELE DATA OUTLET (1) CAT6 CABLES TO IT ROOM.	WHITE	[Symbol]	LEVITON OR EQUAL
▽	PROVIDE FACEPLATE WITH SINGLE KNOCK OUT FOR TELE DATA OUTLET (1) CAT6 CABLES TO IT ROOM.	STAINLESS STEEL	[Symbol]	LEVITON OR EQUAL
▽	PROVIDE 2-GANG BOX. 1-GANG FACEPLATE WITH ONE KNOCK OUT. ONE CAT6 CONNECTION FOR TV.	WHITE	[Symbol]	LEVITON OR EQUAL

- GENERAL NOTES**
- REFER TO THE ENTIRE SET OF CONTRACT DOCUMENTS (ARCHITECTURAL, CIVIL, STRUCTURAL, MECHANICAL, PLUMBING, ELECTRICAL, AND SPECIALTY) AND COORDINATE ALL WORK WITH OTHER TRADES. ADDITIONAL WORK FOR THIS CONTRACTOR MAY BE INDICATED ON OTHER DRAWINGS AND THE CONTRACTOR SHALL BE RESPONSIBLE FOR ALL ELECTRICAL WORK SHOWN IN THE CONTRACT DOCUMENTS.
  - THE WORK INDICATED ON THESE DRAWINGS CONSISTS OF PROVIDING ALL LABOR, SUPERVISION, EQUIPMENT, AND MATERIALS NECESSARY FOR AND INCIDENTAL TO THE INSTALLATION OF THE COMPLETE ELECTRICAL SYSTEMS REQUIRED BY THESE DRAWINGS. REFER TO SPECIFICATIONS FOR ADDITIONAL INFORMATION.
  - THE RFID CARD ACCESS SYSTEM SHALL BE PROVIDED AND INSTALLED BY THIS CONTRACTOR. REFER TO THE RESPONSIBILITY MATRIX FOR INFORMATION REGARDING SYSTEM SPECIFICATION.
  - CCTV SYSTEM SHALL BE BY OWNER. THIS CONTRACTOR SHALL INSTALL CABLING PER DRAWINGS. CONDUIT AND BOX ROUGH-IN IS BY DIVISION 26 ELECTRICAL CONTRACTOR.

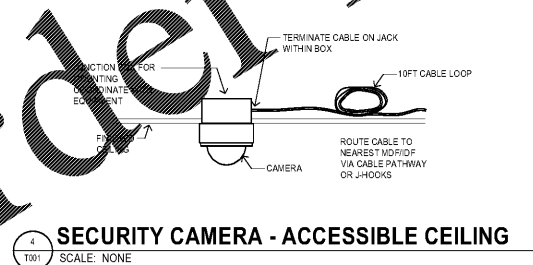
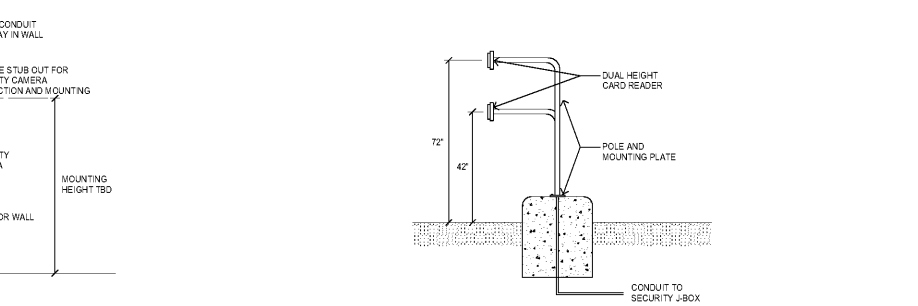


1 TELECOMMUNICATIONS RACK ELEVATION DETAILS  
 SCALE: NONE

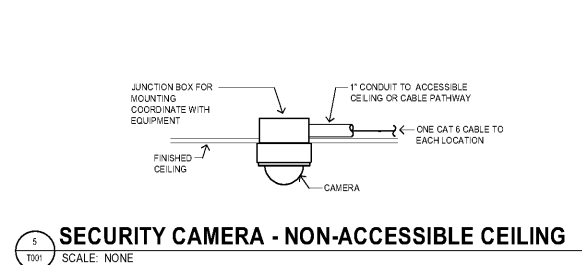


2 TELECOMMUNICATIONS FACEPLATE DETAIL  
 SCALE: NONE

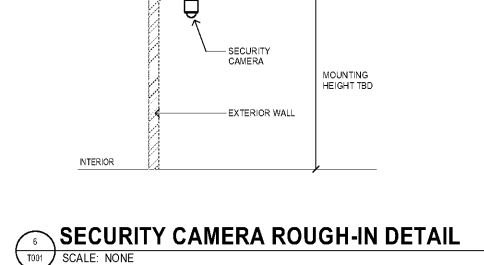
3 VIDEO SURVEILLANCE CAMERA RISER DIAGRAM  
 SCALE: NONE



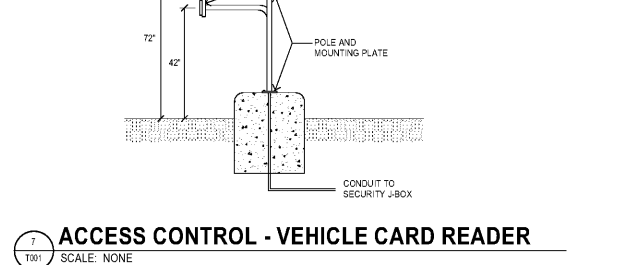
4 SECURITY CAMERA - ACCESSIBLE CEILING  
 SCALE: NONE



5 SECURITY CAMERA - NON-ACCESSIBLE CEILING  
 SCALE: NONE



6 SECURITY CAMERA ROUGH-IN DETAIL  
 SCALE: NONE



7 ACCESS CONTROL - VEHICLE CARD READER  
 SCALE: NONE



**JB Electrical Design, P.C.**  
 Electrical Consulting Engineers  
 8349 Birch Ln.  
 Minneapolis, MN 55445  
 763.886.0965  
 jrb@jbtechnicaldesign.com  
 800.222.8635  
 ©2018 by JB Electrical Design, P.C.

LOW VOLTAGE SYSTEMS - SYMBOLS LEGEND, SCHEDULES AND DETAILS  
**EXTENDED STAY AMERICA**  
 POOLER, GA

COMMISSION NO: 18-120-09  
 DRAWING NO:  
**T001**

Order Plans

WWW.LDDLINE.COM