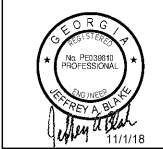




**RULE JOY TRAMMELL RUBIO**  
 ARCHITECTURE INTERIOR DESIGN  
 300 Galleria Parkway Suite 740 Atlanta, Georgia 30329  
 770-661-1492 (phone) 770-661-1493 (fax)  
 www.rjtdesign.com

DATE	ISSUE/REVISION
11/01/18	ISSUED FOR PERMIT

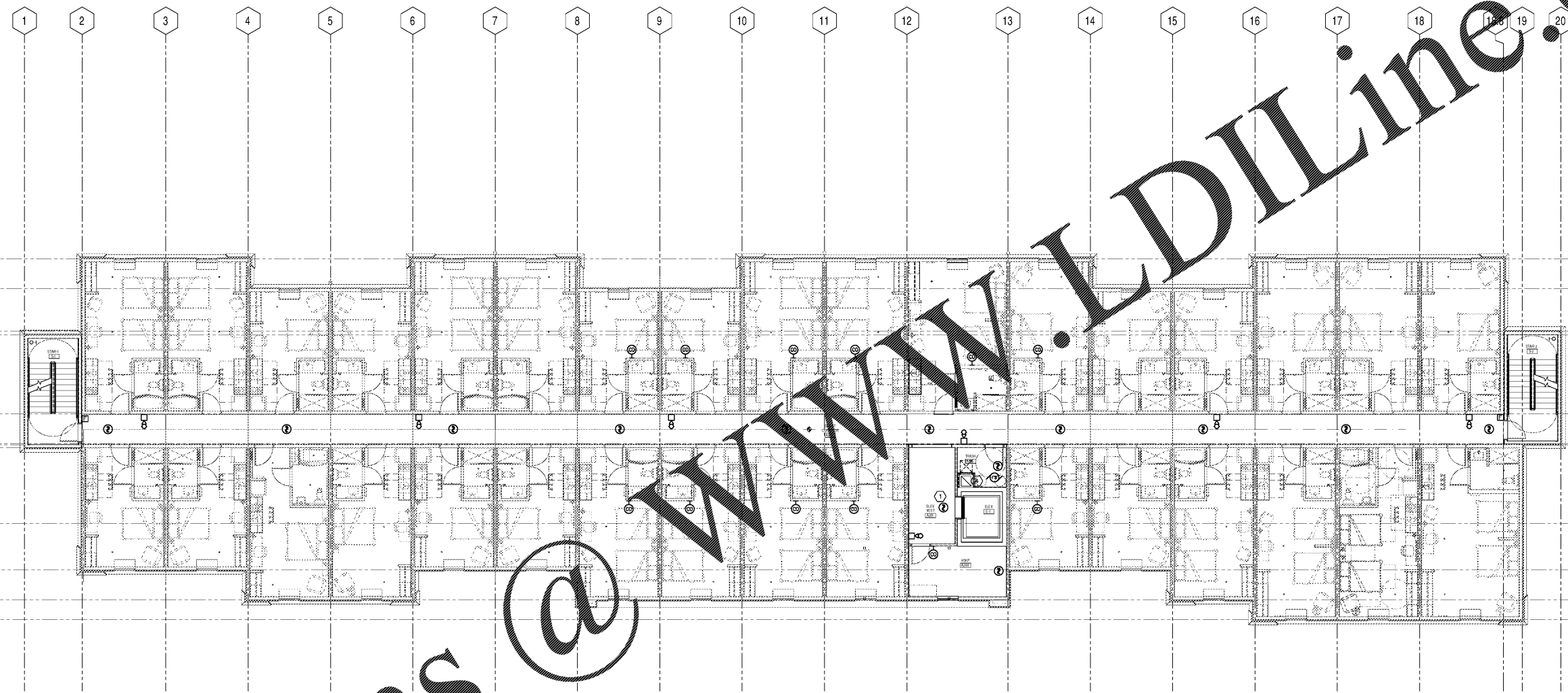
**JB Electrical Design, P.C.**  
 Electrical Consulting Engineers  
 8318 19th Street  
 Minneapolis, MN 55445  
 612-486-0965  
 jrb@jb-electrical.com  
 MELE No. 2013-065  
 ©2018 by JB Electrical Design, PC



LEVEL TWO FLOOR PLAN - FIRE ALARM  
**EXTENDED STAY AMERICA**  
 POOLER, GA

COMMISSION NO: 18-120-00  
 DRAWING NO:

**E502**



LEVEL TWO FLOOR PLAN - FIRE ALARM  
 E502

- SHEET NOTES**
- 1 SMOKE DETECTOR FOR ELEVATOR CAPTURE.
  - 2 INSTALL SMOKE DETECTOR AT TOP OF ELEVATOR SHAFT.
  - 3 INSTALL SMOKE DETECTOR AT TOP OF STAIR.
  - 4 PROVIDE ALL REQUIRED DEVICES TO INTERFACE FIRE/SMOKE DAMPERS WITH FIRE ALARM SYSTEM PER NFPA 72, AND FOR PROPER OPERATION TO COMPLY WITH CODE.
  - 5 INSTALL SMOKE DETECTOR IN ELEVATOR EQUIPMENT COMPARTMENT. COORDINATE WITH ELEVATOR SUPPLIER.

- GENERAL NOTES**
- A. SEE DRAWING E801 AND E901 FOR DETAILS.
  - B. SET ARCHITECTURAL DRAWINGS FOR WALL TYPES. SEAL ALL WALL PENETRATIONS WITH APPROPRIATE SEALANT. COORDINATE FIRE PROOFING REQUIREMENTS FOR PENETRATIONS AND PROVIDE UL LISTED FIRESTOP SYSTEM AS REQUIRED.
  - C. COORDINATE MOUNTING HEIGHTS OF DEVICE WITH ARCHITECTURAL ELEVATIONS.
  - D. ADDITIONAL FIRE ALARM REQUIREMENTS ARE SHOWN ON THE LARGE SCALE ROOMS PLANS.
  - E. REFER TO DRAWING F411 FOR LARGE SCALE GUEST ROOM PLANS.
  - F. FIRE ALARM VISUAL DEVICES ARE RATED FOR 15CD UNLESS NOTED OTHERWISE.
  - G. PROVIDE COMMUNICATIONS FOR HEARING IMPAIRED ROOMS. SEE LARGE SCALE GUEST ROOM DRAWINGS ON F411.
  - H. COORDINATE SMOKE DETECTOR LOCATIONS WITH CEILING ELEMENTS. DO NOT INSTALL ON ACCESS PANELS.
  - I. DO NOT INSTALL CONDUITS EXPOSED ON EXTERIOR OF BUILDING. CONDUITS SHOWN ARE TO PROVIDE DESIGN INTENT OF CIRCUITING AND CONTROL.
  - J. REFER TO RESPONSIBILITY MATRIX FOR INFORMATION REGARDING CO DETECTORS AND FIRE ALARM SYSTEM. CO DETECTORS SHOULD BE INSTALLED AT LEAST 5'-FT FROM A FUEL BURNING APPLIANCE AND AT LEAST 6'-FT ABOVE FINISHED FLOOR. INSTALL PER NFPA 72.

Order Plans @

WWW.LDILine.com