

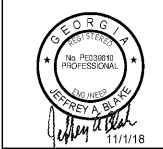


**RULE JOY TRAMMELL RUBIO ARCHITECTURE INTERIOR DESIGN**  
 300 Galleria Parkway Suite 740 Atlanta, Georgia 30329  
 770-661-1492 (phone) 770-661-1493 (fax)  
 www.rjtdeign.com

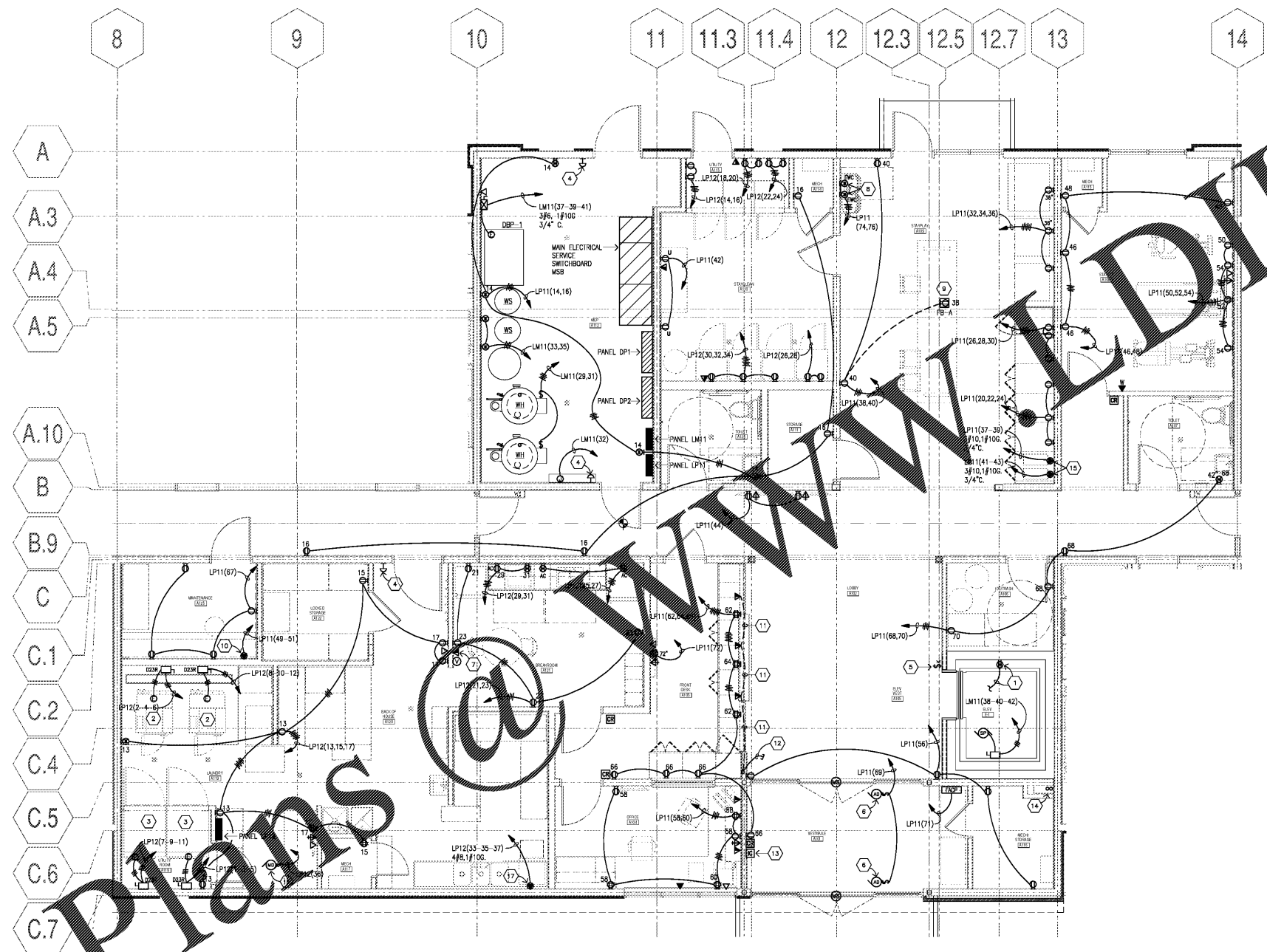
- GENERAL NOTES**
- SEE DRAWINGS E801 FOR ONE-LINE DIAGRAM AND E811 AND E812 FOR PANEL SCHEDULES.
  - REFER TO ARCHITECTURAL DRAWINGS FOR ELEVATIONS AND ADDITIONAL INFORMATION. INSTALL DEVICES AT HEIGHTS AS INDICATED ON ARCHITECTURAL PLAN.
  - SEE ARCHITECTURAL DRAWINGS FOR WALL TYPES. SEAL ALL WALL PENETRATIONS WITH APPROPRIATE SEALANT. COORDINATE FIRE PROOFING REQUIREMENTS FOR PENETRATIONS AND PROVIDE UL LISTED FIRESTOP SYSTEM AS REQUIRED.
  - CONTRACTOR SHALL REVIEW MECHANICAL DRAWINGS AND COORDINATE ELECTRICAL EQUIPMENT LOCATIONS WITH MECHANICAL EQUIPMENT, DUCT WORK AND PIPING. COORDINATE EQUIPMENT CONNECTION REQUIREMENTS WITH SHOP DRAWINGS. MAKE ALL WIRING CONNECTIONS AS REQUIRED. PROVIDE DISCONNECTS AND STARTERS AS REQUIRED.
  - ALL 120V CIRCUITS SHALL HAVE SEPARATE NEUTRALS. MULTIPLE BRANCH CIRCUITS ARE NOT PERMITTED UNLESS NOTED OTHERWISE.
  - GFCI RECEPTACLES SHALL BE WIRED TO PROTECT ONLY THAT DEVICE AND NOT DOWNSTREAM DEVICES UNLESS NOTED OTHERWISE.
  - COORDINATE MOUNTING HEIGHTS OF DEVICE WITH ARCHITECTURAL ELEVATIONS.
  - WIRELESS ACCESS POINT (WAP) AND SECURITY CAMERA LOCATIONS AS REQUIRED SHALL BE DETERMINED BY OWNER.
  - 120V CIRCUITS THAT EXCEED 100-FT IN LENGTH SHALL BE INCREASED IN SIZE TO #12. 120V CIRCUITS THAT EXCEED 150-FT IN LENGTH SHALL BE INCREASED IN SIZE TO #10.
  - IF MOUNTING HEIGHTS ARE NOT SHOWN ON ELECTRICAL DRAWINGS, COORDINATE MOUNTING HEIGHTS OF DEVICE WITH ARCHITECTURAL DRAWINGS PRIOR TO INSTALLATION.
  - COORDINATE LOW VOLTAGE WORK WITH LOW VOLTAGE CONTRACTOR. REFER TO "I" (LOW VOLTAGE) DRAWINGS FOR ADDITIONAL INFORMATION.

- SHEET NOTES**
- INSTALL RECEPTACLE IN ELEVATOR PIT. CONNECT TO LIGHTING CIRCUIT.
  - DISCONNECT FOR WASHER. MAKE FINAL CONNECTION TO EQUIPMENT.
  - DISCONNECT FOR DRYER. MAKE FINAL CONNECTION TO EQUIPMENT.
  - PROVIDE EPD PUSH BUTTON FOR EMERGENCY POWER OFF TO SHUT OFF GAS EQUIPMENT. PROVIDE ALL INTERFACE WIRING.
  - PROVIDE ROUGH-IN FOR FIRE DEPARTMENT KEYED SWITCH. ROUTE 3/4" C TO MOTORIZED DAMPER AT TOP OF SHAFT. KEYED SWITCH IS PROVIDED BY ELEVATOR SUPPLIER. INSTALLATION AND WIRING IS BY ELECTRICAL CONTRACTOR.
  - PROVIDE 120V CONNECTION TO AUTOMATIC DOOR. COORDINATE CONNECTION WITH DOOR EQUIPMENT.
  - PROVIDE RECEPTACLE AND DATA OUTLET FOR EMPLOYEE TIME CLOCK.
  - CONCEAL RECEPTACLE FOR DRINKING FOUNTAIN BEHIND SHROUD. GFCI PROTECTION SHALL BE GFCI CIRCUIT BREAKER.
  - COORDINATE LOCATION OF FLOOR BOX WITH FURNITURE.
  - RECEPTACLE SHALL MATCH PIAC PLUG.
  - ROUTE 1-1/4" C. IN MILLWORK FOR LOW VOLTAGE CABLING.
  - PROVIDE 1-1/4" C STUB UP TO ACCESSIBLE CEILING SPACE.
  - INTERCOM FOR COMMUNICATION BETWEEN VESTIBULE AND LAUNDRY AREA.
  - STUB UP INCOMING CONDUITS FROM COMMUNICATIONS UTILITY HERE. ROUTE IN CHASE UP TO MDF ON LEVEL TWO.
  - PROVIDE L14-30R AND 30A CORD WITH L14-30P OUTLET AS WELL AS CORD AND PLUG FOR COFFEE BREWER. VERIFY REQUIREMENTS WITH MANUFACTURER.
  - INTERLOCK MOTORIZED DAMPER WITH DRYERS SO THAT DAMPER OPENS WHEN DRYERS ARE OPERATING. PROVIDE CURRENT SENSORS FOR DRYER BRANCH CIRCUITS TO SENSE WHEN DRYERS ARE OPERATING TO TRIGGER THE DAMPER TO OPEN.
  - PROVIDE A NEMA 14-50R 125/250V RECEPTACLE FOR DISHWASHER. PROVIDE RATED CORD AND PLUG. FIELD CONVERT EQUIPMENT TO A 3-PHASE CONNECTION. INSTALL IN ACCORDANCE WITH EQUIPMENT MANUFACTURER'S INSTRUCTIONS.

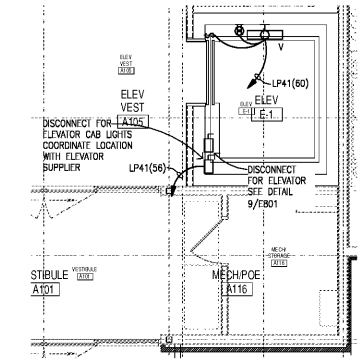
PRINTED  
 DATE 11/01/18  
 ISSUE/REVISION ISSUED FOR PERMIT



ENLARGED PLAN LEVEL ONE CORE AREA - POWER & SYSTEMS  
**EXTENDED STAY AMERICA**  
 COMMISSION NO: 18-120-00  
 DRAWING NO:  
**E421**  
 POOLER, GA



**1** ENLARGED PLAN LEVEL ONE CORE AREA - POWER & SYSTEMS  
 1/4" = 1'-0"



**2** ENLARGED ELEVATOR SHAFT - LEVEL FOUR  
 1/4" = 1'-0"

**Order Plans**