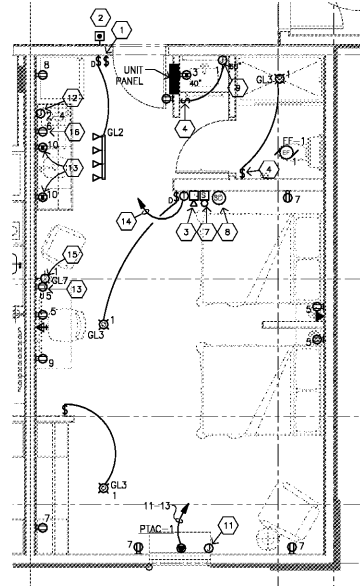


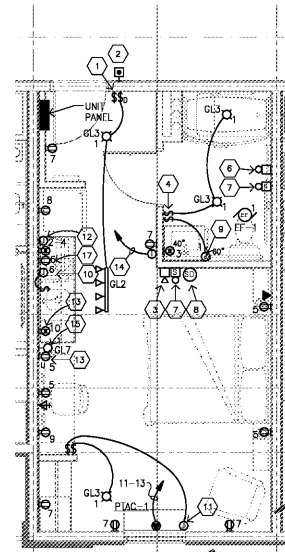
IDEAL STUDIO DOUBLE QUEEN - ADA - ELECTRICAL PLAN

E412 1/4" = 1'-0"



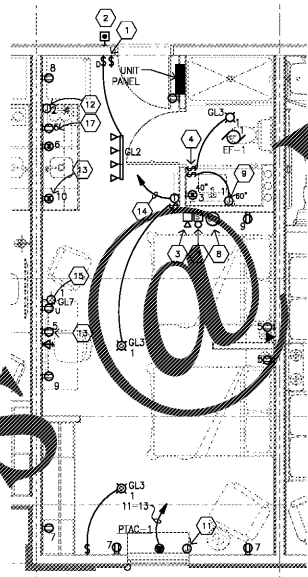
IDEAL STUDIO DOUBLE QUEEN LONG - IS-QQ - ELECTRICAL PLAN

E412 1/4" = 1'-0"



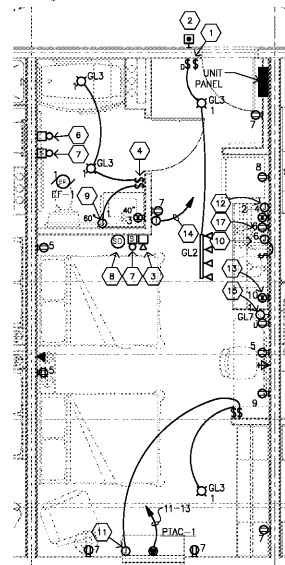
SUPERIOR STUDIO KING - ADA - ELECTRICAL PLAN

E412 1/4" = 1'-0"



IDEAL STUDIO DOUBLE QUEEN - NARROW - ELECTRICAL PLAN

E412 1/4" = 1'-0"



SUPERIOR STUDIO DOUBLE QUEEN - ADA - ELECTRICAL PLAN

E412 1/4" = 1'-0"

**GENERAL NOTES**

- A. REFER TO ARCHITECTURAL DRAWINGS FOR ELEVATIONS AND ADDITIONAL INFORMATION. INSTALL DEVICES AT HEIGHTS AS INDICATED ON ARCHITECTURAL PLAN.
- B. ALL RECEPTACLES IN GUEST ROOMS SHALL BE TAMPER RESISTANT TYPE.
- C. MINIMUM WIRE SIZE SHALL BE #12 AWG FOR 20-AMP CIRCUITS. NO. 14 AWG FOR 15-AMP CIRCUITS. MAKE ADJUSTMENTS TO WIRE SIZE FOR VOLTAGE DROP AS REQUIRED TO LIMIT VOLTAGE DROP TO 3%.
- D. ALL CIRCUITS SHALL HAVE SEPARATE NEUTRALS.
- E. MECHANICAL EQUIPMENT IS SHOWN FOR REFERENCE ONLY. CONTRACTOR SHALL REVIEW MECHANICAL DRAWINGS AND COORDINATE ELECTRICAL EQUIPMENT LOCATIONS WITH MECHANICAL EQUIPMENT. MAKE ALL WIRING CONNECTIONS AS REQUIRED. MINIMUM WIRE SIZE SHALL BE #12 AWG.
- F. COORDINATE LOCATIONS OF ELECTRICAL DEVICES WITH FIRE ALARM SYSTEM SUPPLIER AND ARCHITECTURAL ELEVATIONS.
- G. BACK-TO-BACK BOXES ARE NOT PERMITTED BETWEEN GUEST ROOMS.
- H. ELECTRICAL GULCHES, MILLS, AND OUTLETS MUST FIT WITH THE PARTITION SECTION WORK AS INDICATED. ELECTRICAL CONTRACTOR MUST STAMP OUTLETS AS PER NOTES AND THE ARCHITECTURAL DRAWINGS WHILE MAINTAINING RELATIVE POSITIONS AS SHOWN.
- I. WHERE A SWITCH AND RECEPTACLE ARE ADJACENT TO EACH OTHER THEY SHALL BE INSTALLED IN A MULTI-GANG BOX UNDER ONE PLATE WHERE FEASIBLE.
- J. WHERE RECEPTACLES AND LOW VOLTAGE DEVICES ARE LOCATED NEAR TO EACH OTHER THEY SHALL BE INSTALLED AT THE SAME HEIGHT AND PLUMB AND LEVEL.
- K. LOCATE CEILING LIGHTS IN SHOWER ROOMS NEAR SHOWER FOR ADEQUATE LIGHTING. REFER TO ARCHITECTURAL DRAWINGS.
- L. GROUND FAULT CIRCUIT INTERRUPTER (GFCI) TYPE RECEPTACLES SHALL BE INSTALLED AS REQUIRED BY CODE.
- M. ALL LOW VOLTAGE CABLES SHALL BE HOME-RUNNED TO IDENTIFIED ROOM. DENSITY-CHAIN INSULATIONS ARE NOT PERMITTED FOR LOW VOLTAGE DEVICES. PROVIDE A 3/4" C. ROUGH-IN FROM DECK TO ACCESSIBLE CEILING IN CORRIDOR. EMT (SMURF TUBE) IS ACCEPTABLE WHERE PERMITTED BY CODE.
- O. SEAL ALL WALL PENETRATIONS WITH APPROPRIATE SEALANTS. WHERE PENETRATION IS THROUGH A FIRE RATED WALL, USE THE APPROPRIATE SEALANT TO MAINTAIN THE UL FIRE RATING.

**SHEET NOTES**

- 1) DOORBELL ON/OFF SWITCH FOR HEARING IMPAIRED ROOMS ONLY. PROVIDE SIGNAGE TO INDICATE USE OF SWITCH.
- 2) DOORBELL PUSHBUTTON FOR HEARING IMPAIRED ROOMS ONLY. PROVIDE SIGNAGE PER DETAIL THIS DRAWING.
- 3) IN HEARING IMPAIRED ROOMS, PROVIDE A 177CD RATED HORN/STROBE IN LIEU OF HORN FOR FIRE ALARM. VISUAL DEVICE INSTALLATION SHALL COMPLY WITH NFPA 72.
- 4) IN BATHROOM LOCATIONS ONLY, LIGHT SWITCH EQUIPPED WITH "LITE-A-SWITCH" LED BACKLIT FACEPLATE, UNIVERSAL SERIES CLEAR SWITCH WITH PLATE, MAINTAIN 2" DISTANCE FROM ALL OTHER DEVICES.
- 5) WHERE DEVICE IS INSTALLED IN MILLWORK, EXTEND J-BOX, DEVICE, AND COVER PLATE FLUSH WITH MILLWORK BACK PANEL.
- 6) IN HEARING IMPAIRED ROOMS, PROVIDE A STROBE IN BATHROOMS.
- 7) IN HEARING IMPAIRED ROOMS, PROVIDE VISUAL DEVICE FOR DOORBELL. SEE DETAIL 5/E411.
- 8) SMOKE DETECTOR. REFER TO E500 SERIES DRAWINGS TO VERIFY LOCATION OF ADDITIONAL CARBON MONOXIDE DETECTOR WHERE REQUIRED.
- 9) PROVIDE ELECTRICAL CONNECTION TO BATHROOM MIRROR. FIELD VERIFY REQUIREMENTS.
- 10) MAKE CONNECTION TO RANGE HOOD. PROVIDE SWITCH ON WALL TO CONTROL HOOD.
- 11) IN ADA ROOMS, PROVIDE ROUGH-IN AND ALL REQUIRED WIRING FOR MOTORIZED WINDOW TREATMENTS.
- 12) MAKE CONNECTION TO COOKTOP.
- 13) MOUNT DEVICE HORIZONTAL.
- 14) PROVIDE 3/4" EMT CONDUIT TO PIAC UNIT FOR CONTROL WIRING.
- 15) INSTALL OWNER FURNISHED WALL SCONCE TYPE GR-801-LI.
- 16) INSTALL RECEPTACLE IN UPPER CABINET FOR MICROWAVE.
- 17) INSTALL RECEPTACLE IN LOWER CABINET FOR MICROWAVE.

**RUBIO**  
**ARCHITECTURE INTERIOR DESIGN**

**RULE JOY TRAMMELL RUBIO**  
ARCHITECTURE INTERIOR DESIGN  
300 Galleria Parkway Suite 740 Atlanta, Georgia 30329  
770-661-1492 (phone) 770-661-1493 (fax)  
www.rjtdesign.com

THIS DRAWING IS THE PROPERTY OF RULE JOY TRAMMELL RUBIO ARCHITECTURE INTERIOR DESIGN. IT IS TO BE USED ONLY FOR THE PROJECT AND LOCATION SPECIFICALLY IDENTIFIED HEREON.

PRINTED

| DATE     | ISSUE/REVISION    |
|----------|-------------------|
| 11/01/18 | ISSUED FOR PERMIT |
|          |                   |
|          |                   |
|          |                   |
|          |                   |
|          |                   |
|          |                   |
|          |                   |
|          |                   |
|          |                   |
|          |                   |
|          |                   |
|          |                   |
|          |                   |
|          |                   |

**JB Electrical Design, P.C.**  
Electrical Consulting Engineers  
9330 Birch Lake Dr  
Minneapolis, MN 55445  
763.486.0965  
jbe@jb-electrical-design.com  
ELEC. ENG. NO. 2013.6.063  
© 2018 by JB Electrical Design, P.C.

**GEORGE B. BLAIR**  
REGISTERED PROFESSIONAL  
ELECTRICAL ENGINEER  
11/1/18

LARGE SCALE GUEST ROOMS - ELECTRICAL

**EXTENDED STAY AMERICA**

COMMISSION NO: 18-120-00  
DRAWING NO:

**E412**

POOLER, GA

Order Plans