



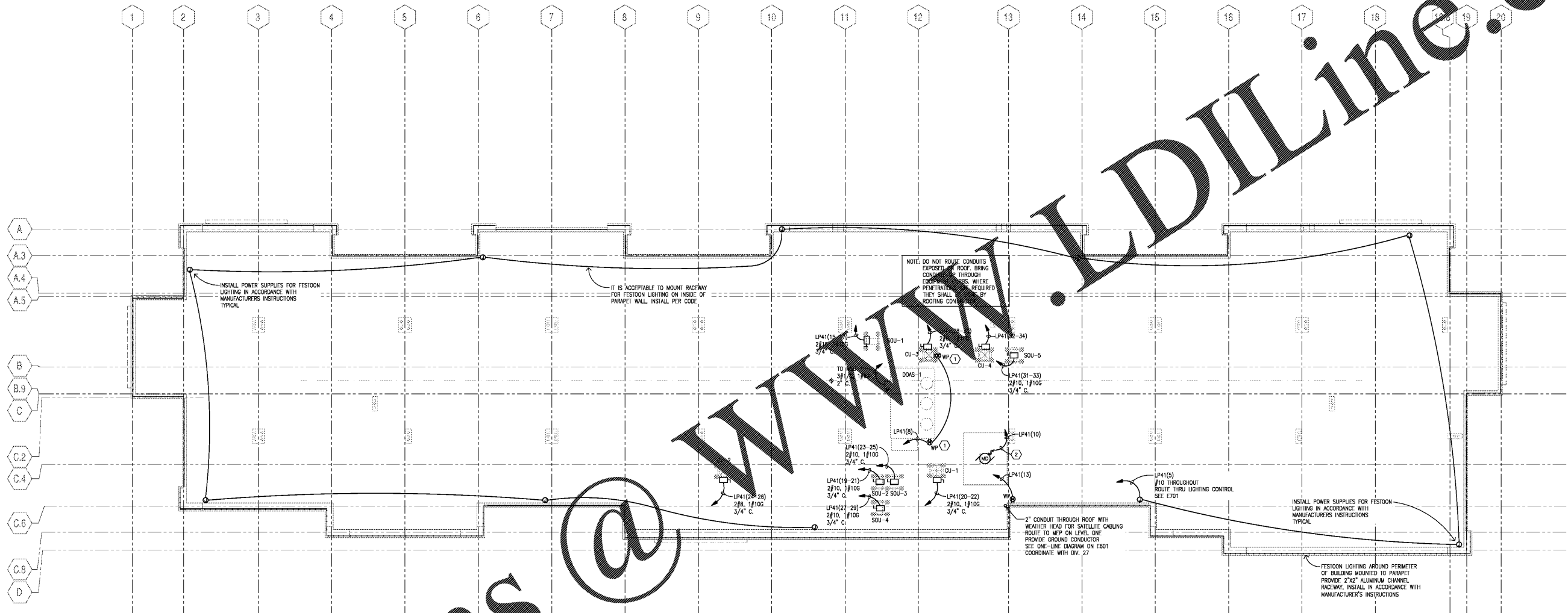
RULE JOY TRAMMELL RUBIO
 ARCHITECTURE INTERIOR DESIGN
 300 Galleria Parkway Suite 740 Atlanta, Georgia 30329
 770-661-1492 (phone) 770-661-1493 (fax)
 www.rjtde.com

DATE	ISSUE/REVISION
11/01/18	ISSUED FOR PERMIT



ROOF PLAN POWER
EXTENDED STAY AMERICA
 POOLER, GA

COMMISSION NO: 18-120-00
 DRAWING NO:
E304



1 ROOF PLAN - POWER
 1/8" = 1'-0"

SHEET NOTES	
①	COORDINATE INSTALLATION OF RECEPTACLE WITH MECHANICAL EQUIPMENT.
②	ROUTE CIRCUIT THROUGH KEYED SWITCH AT MAIN FLOOR FOR MOTORIZED DAMPER AT TOP OF ELEVATOR SHAFT.

GENERAL NOTES	
A.	SEE DRAWINGS E601 FOR ONE-LINE DIAGRAM AND E611 AND E612 FOR PANEL SCHEDULES.
B.	SEE DRAWING E601 AND E601 FOR DETAILS.
C.	SEE ARCHITECTURAL DRAWINGS FOR WALL TYPES. SEAL ALL WALL PENETRATIONS WITH APPROPRIATE SEALANT. COORDINATE FIRE PROOFING REQUIREMENTS FOR PENETRATIONS AND PROVIDE UL LISTED FIRESTOP SYSTEM AS REQUIRED.
D.	CONTRACTOR SHALL REVIEW MECHANICAL DRAWINGS AND COORDINATE ELECTRICAL EQUIPMENT LOCATIONS WITH MECHANICAL EQUIPMENT, DUCT WORK AND PIPING. COORDINATE EQUIPMENT CONNECTION REQUIREMENTS WITH SHOP DRAWINGS. MAKE ALL WIRING CONNECTIONS AS REQUIRED. PROVIDE DISCONNECTS AND STARTERS AS REQUIRED.
E.	ALL 120V CIRCUITS SHALL HAVE SEPARATE NEUTRALS. MULTI-WIRE BRANCH CIRCUITS ARE NOT PERMITTED UNLESS NOTED OTHERWISE.
F.	GFCI RECEPTACLES SHALL BE WIRING TO PROTECT ONLY THAT DEVICE AND NOT DOWNSTREAM DEVICES UNLESS NOTED OTHERWISE.

Order Plans @

WWW.LDILine.com