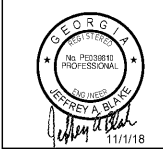




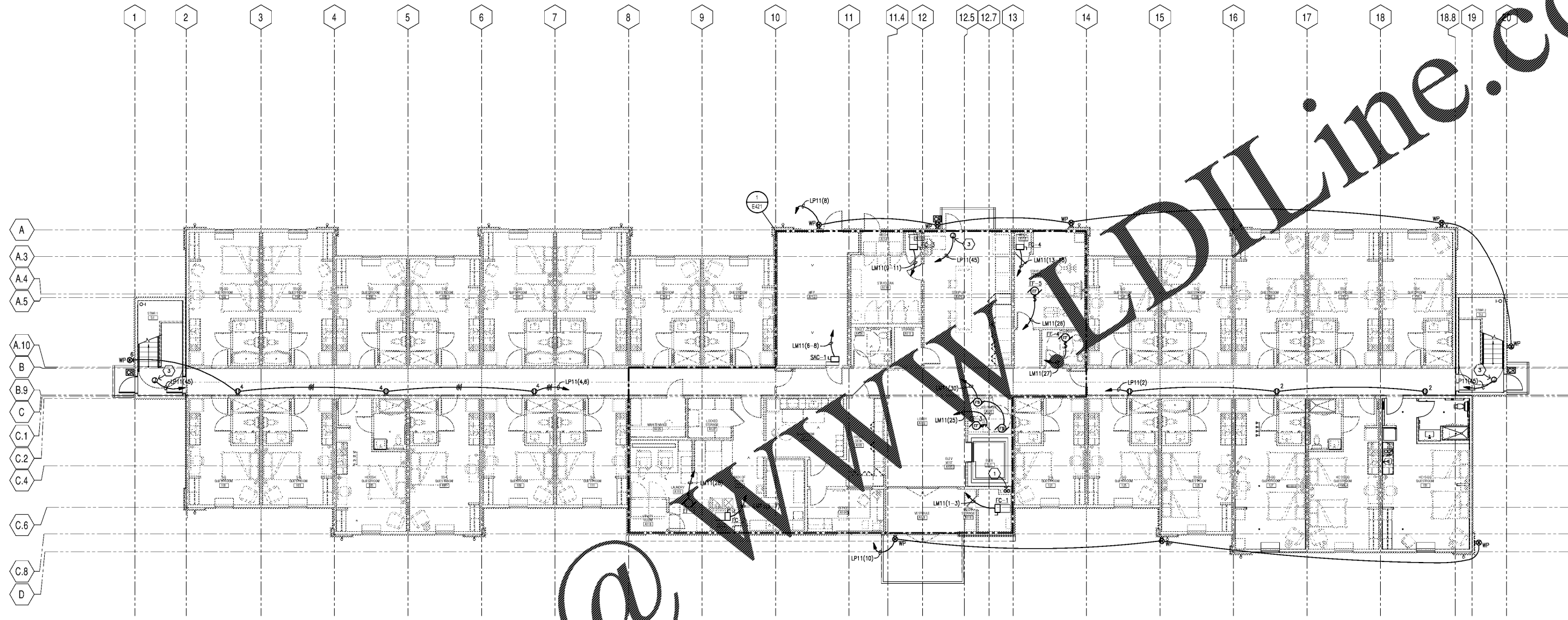
**RULE JOY TRAMMELL RUBIO**  
 ARCHITECTURE | INTERIOR DESIGN  
 300 Galleria Parkway Suite 740 Atlanta, Georgia 30329  
 770-661-1492 (phone) 770-661-1493 (fax)  
 www.rjtdesign.com

PRINTED  
 DATE 11/01/18  
 ISSUE/REVISION ISSUED FOR PERMIT



LEVEL ONE FLOOR PLAN - POWER & SYSTEMS  
**EXTENDED STAY AMERICA**  
 POOLER, GA

COMMISSION NO. 18-120-00  
 DRAWING NO. **E301**



**LEVEL ONE FLOOR PLAN - POWER & SYSTEMS**  
 E301 1/8" = 1'-0"

- SHEET NOTES**
- ① (2) 4" CONDUITS INCOMING FROM UTILITY FOR COMMUNICATIONS.
  - ② COORDINATE MOUNTING WITH ARCHITECTURAL.
  - ③ PROVIDE 120V IN CEILING SPACE FOR DOOR SECURITY.

- GENERAL NOTES**
- A. SEE DRAWINGS E601 FOR ONE-LINE DIAGRAM AND E811 AND E812 FOR PANEL SCHEDULES.
  - B. SEE DRAWING E801 AND E901 FOR DETAILS.
  - C. SEE ARCHITECTURAL DRAWINGS FOR WALL TYPES. SEAL ALL WALL PENETRATIONS WITH APPROPRIATE SEALANT. COORDINATE FIRE PROOFING REQUIREMENTS FOR PENETRATIONS AND PROVIDE UL LISTED FIRESTOP SYSTEM AS REQUIRED.
  - D. CONTRACTOR SHALL REVIEW MECHANICAL DRAWINGS AND COORDINATE ELECTRICAL EQUIPMENT LOCATIONS WITH MECHANICAL EQUIPMENT, DUCT WORK AND PIPING. COORDINATE EQUIPMENT CONNECTION REQUIREMENTS WITH SHOP DRAWINGS. MAKE ALL WIRING CONNECTIONS AS REQUIRED. PROVIDE DISCONNECTS AND SWITCHES AS REQUIRED.
  - E. ALL 120V CIRCUITS SHALL HAVE SEPARATE NEUTRALS. MULTI-WIRE BRANCH CIRCUITS ARE NOT PERMITTED UNLESS NOTED OTHERWISE.
  - F. GFI RECEPTACLES SHALL BE WIRED TO PROTECT ONLY THAT DEVICE AND NOT DOWNSTREAM DEVICES UNLESS NOTED OTHERWISE.
  - G. REFER TO DRAWING E411 FOR LARGE SCALE GUEST ROOM PLANS.
  - H. DEVICE MOUNTING HEIGHTS ARE NOT SHOWN ON ELECTRICAL DRAWINGS. COORDINATE MOUNTING HEIGHTS OF DEVICE WITH ARCHITECTURAL ELEVATIONS PRIOR TO ROUGH-IN.
  - I. ADDITIONAL FIRE ALARM REQUIREMENTS ARE SHOWN ON THE LARGE SCALE ROOMS PLANS.
  - J. FIRE ALARM VISUAL DEVICES ARE RATED FOR 150CD UNLESS NOTED OTHERWISE.
  - K. WIRELESS ACCESS POINT (WAP) AND SECURITY CAMERA LOCATIONS AS REQUIRED SHALL BE DETERMINED BY OWNER.
  - L. 120V CIRCUITS THAT EXCEED 100-FT IN LENGTH SHALL BE INCREASED IN SIZE TO #10 WIRE. 120V CIRCUITS THAT EXCEED 150-FT IN LENGTH SHALL BE INCREASED IN SIZE TO #8 WIRE.
  - M. PROVIDE COMMUNICATIONS FOR HEARING IMPAIRED ROOMS. SEE LARGE SCALE GUEST ROOM DRAWINGS ON E411.
  - N. COORDINATE SMOKE DETECTOR LOCATIONS WITH CEILING ELEMENTS. DO NOT INSTALL ON ACCESS PANELS.
  - O. DO NOT INSTALL CONDUITS EXPOSED ON EXTERIOR OF BUILDING. CONDUITS SHOWN ARE TO PROVIDE DESIGN INTENT OF CIRCUITING AND CONTROL.
  - P. COORDINATE LOW VOLTAGE WORK WITH LOW VOLTAGE CONTRACTOR. REFER TO I (TECHNOLOGY) DRAWINGS FOR ADDITIONAL INFORMATION.

Order Plans @