



RULE JOY TRAMMELL RUBIO
 ARCHITECTURE INTERIORDESIGN
 300 Galleria Parkway Suite 740 Atlanta, Georgia 30338
 770-661-1492 (phone) 770-661-1493 (fax)
 www.rjtrdesign.com

THIS DRAWING IS THE PROPERTY OF RULE JOY TRAMMELL RUBIO ARCHITECTURE INTERIORDESIGN, LLC AND MAY NOT BE REPRODUCED WITHOUT WRITTEN PERMISSION.

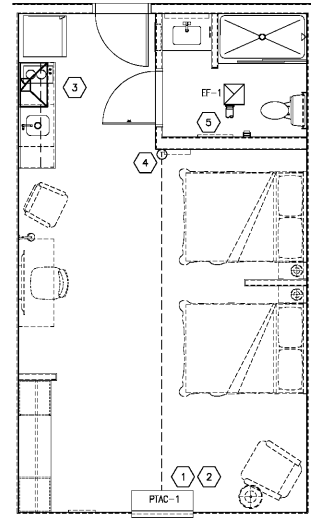
- KEYED MECHANICAL NOTES**
- SEE PLUMBING PLANS FOR CONDENSATE DRAIN PIPING. (TYPICAL ALL PIAC UNITS).
 - PACKAGED TERMINAL AC UNIT. SEE SHEET 3/102.1 FOR INSTALLATION DETAIL.
 - BROAD 413004 STAINLESS STEEL RECIRCULATION RANGE HOOD.
 - ONLY USE REMOTE THERMOSTATS WHEN REQUIRED BY CODE. BASEBID IS A UNIT MOUNTED THERMOSTAT. ALTERNATE BID IS AN ADD FOR A VERDANT THERMOSTAT.
 - METAL EXHAUST DUCT ABOVE CEILING. SEE MECHANICAL PLAN FOR CONTINUATION.

ROOM AIR BALANCE SUMMARY

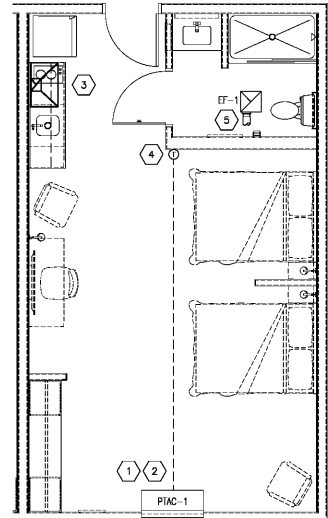
ROOM NAME	AIR BALANCE (CFM)			PANASONIC EXHAUST FAN SETTINGS		
	O.A.	E.A.	TOTAL	AIR VOLUME SETTING	MULTI-SPEED SETTING	DELAY TIME SETTING
STUDIO QUEEN (S-Q)	35	40	-5	80	40	00 MIN
SUPERIOR STUDIO KING (SS-K)	35	40	-5	80	40	00 MIN
SUPERIOR STUDIO QD (SS-QD)	35	40	-5	80	40	00 MIN
IDEAL STUDIO QD (IS-QD)	35	40	-5	80	40	00 MIN

ROOM MATRIX

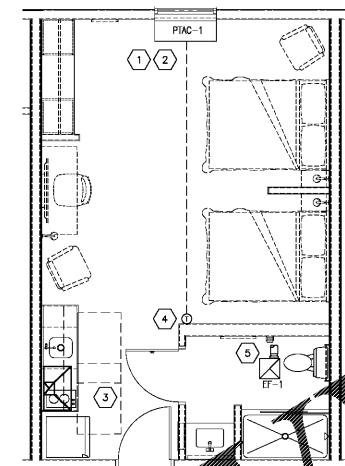
ROOM NAME	FLOOR				TOTAL
	1ST	2ND	3RD	4TH	
STUDIO QUEEN (S-Q)	12	12	12	12	48
SUPERIOR STUDIO KING (SS-K)	4	5	5	5	19
SUPERIOR STUDIO QD (SS-QD)	0	11	11	11	38
IDEAL STUDIO QD (IS-QD) - SHORT	0	0	0	0	0
IDEAL STUDIO QD (IS-QD) - LONG	1	3	3	3	10
IDEAL STUDIO QD (IS-QD) - NARROW	0	0	0	0	0
HSS-K - TUB	1	0	0	0	1
HSS-QD - TUB	1	0	0	0	1
HSS-K - ROLL-IN SHOWER	0	1	1	1	3
HSS-QD - ROLL-IN SHOWER	0	1	1	1	3
HOB-QD - ROLL-IN SHOWER	1	0	0	0	1
TOTALS	25	33	33	33	124



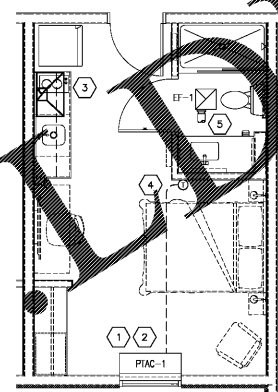
1 IDEAL STUDIO DOUBLE QUEEN - ADA - MECHANICAL
 SCALE: 1/4" = 1'-0"



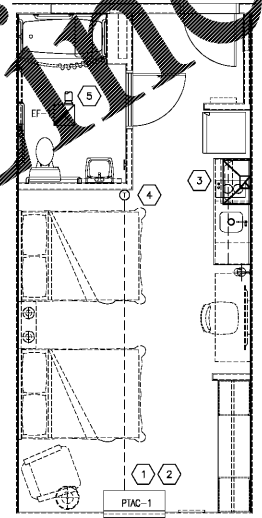
2 IDEAL STUDIO DOUBLE QUEEN - LONG - MECHANICAL
 SCALE: 1/4" = 1'-0"



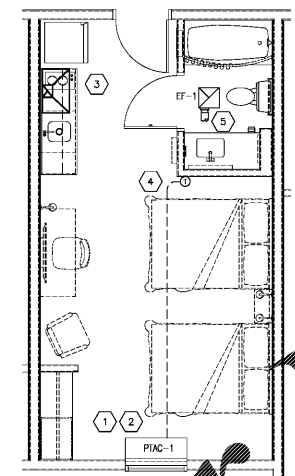
3 IDEAL STUDIO DOUBLE QUEEN - SHORT - MECHANICAL
 SCALE: 1/4" = 1'-0"



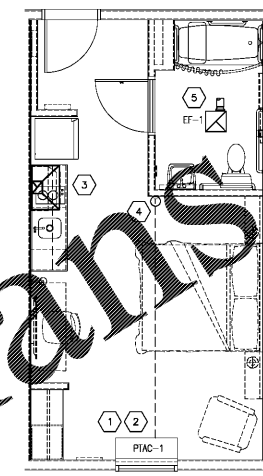
4 STUDIO QUEEN - MECHANICAL
 SCALE: 1/4" = 1'-0"



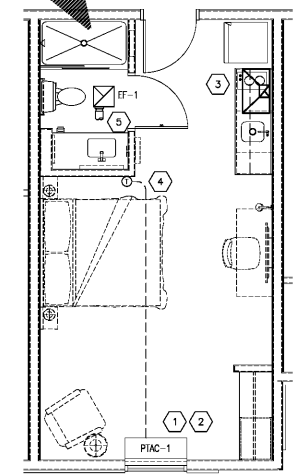
5 SUPERIOR STUDIO DOUBLE QUEEN - ADA - MECHANICAL
 SCALE: 1/4" = 1'-0"



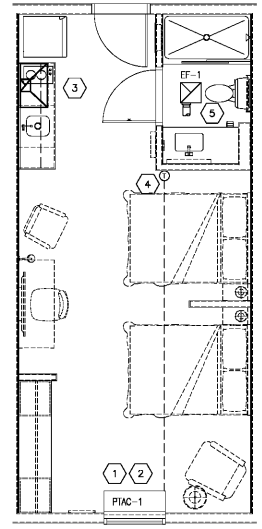
6 SUPERIOR STUDIO DOUBLE QUEEN - MECHANICAL
 SCALE: 1/4" = 1'-0"



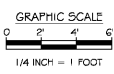
7 SUPERIOR STUDIO KING - ADA - MECHANICAL
 SCALE: 1/4" = 1'-0"



8 SUPERIOR STUDIO KING - MECHANICAL
 SCALE: 1/4" = 1'-0"



9 IDEAL STUDIO DOUBLE QUEEN - ADA - NARROW - MECHANICAL
 SCALE: 1/4" = 1'-0"



Order Plans @ WWW.RJTR.COM

PRINTED

DATE	ISSUE/REVISION
11/01/18	ISSUED FOR PERMIT



ENLARGED GUESTROOM PLANS - HVAC
EXTENDED STAY AMERICA
 POOLER, GEORGIA

COMMISSION NO: 18-120.00
 DRAWING NO:
M1.4