



**RULE JOY TRAMMELL RUBIO**  
ARCHITECTURE INTERIOR DESIGN  
300 Galleria Parkway Suite 740 Atlanta, Georgia 30338  
770-661-1492 (phone) 770-661-1493 (fax)  
www.rjtrdesign.com

**FOURTH FLOOR FRAMING PLAN NOTES:**

- SEE SHEET S205 FOR SHEARWALL PLAN. WOOD TRUSS SUPPLIER TO COORDINATE TRUSS LAYOUT W/ SHEAR WALL LOCATIONS.
- SEE DETAIL 15/S401 FOR STANDARD WOOD FRAMING DETAILS & STANDARD STEEL FRAMING DETAILS.
- REINFORCE 6" CMU WALL W/ #5 VERTS @ 2'-8".
- "L" DENOTES L.L. OR L.V. (L.V.) CMU LINTEL. S.D. 9/S401.
- ALL STRUCTURAL PARTY WALLS TO BE STAGGERED 2x4'S @ 6" WITH 2x6 PLATES.

KEYNOTE	NOTE
1	20" FLOOR TRUSSES @ 2'-0" O.C. MAX UND.
2	16" LANDING TRUSSES @ 2'-0" O.C.
3	2x10 JOISTS @ 1'-4" O.C.
4	SEE DETAIL 15/S401 FOR STAIR FRAMING DETAILS.
5	TRUSS SUPPLIER TO PROVIDE FRAMED OPENING AT MECHANICAL OPENING. VERIFY SIZE & LOCATION WITH MECHANICAL.

MARK	SIZE	JACK STUDS	KING STUDS	COMMENTS
H1	(2) 2x8	(1) 2x6	(1) 2x6	-
H2	(2) 2x8	(2) 2x6	(1) 2x6	-
H3	(3) 2x10	(2) 2x6	(1) 2x6	-
H4	(3) 1 1/2"x8 1/2" LVL	(3) 2x6	(1) 2x6	-
H5	(3) 1 1/2"x7 1/2" LVL	(3) 2x6	(1) 2x6	-
H6	(3) 1 1/2"x11 1/2" LVL	(4) 2x6	(2) 2x6	-
H7	(3) 2x10	(2) 2x6	(1) 2x6	-

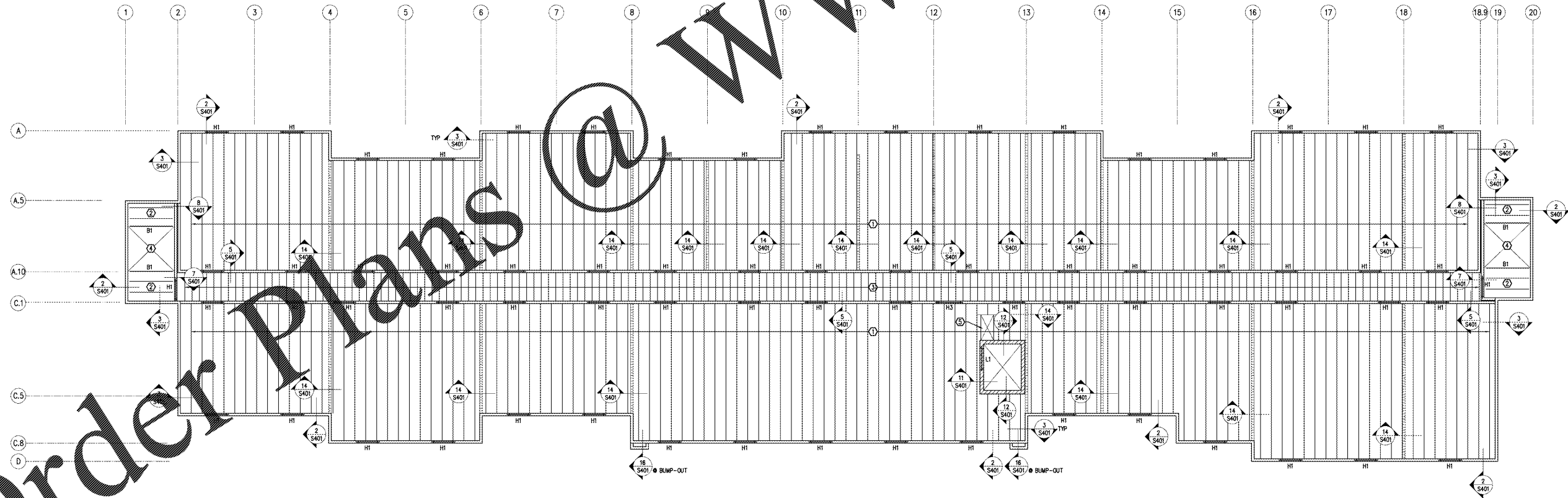
MARK	SIZE	COMMENTS
B1	STAR BEAM	SEE DETAIL
B2	(3) 2x10	(1) 2x6 EACH END
B3	(3) 1 1/2"x8 1/2" LVL	(2) 2x6 EACH END
B4	(3) 1 1/2"x8 1/2" LVL	(3) 2x6 EACH END
B5	(3) 1 1/2"x8 1/2" LVL	(4) 2x6 EACH END
B6	(3) 1 1/2"x12 1/2" LVL	-

WWW.LDILine.com

PRINTED  
DATE: 11/01/18  
ISSUE/REVISION: FOR PERMIT



ISSUED FOR PERMIT  
FOURTH FLOOR FRAMING PLAN  
**EXTENDED STAY OF AMERICA**  
COMMISSION NO: 18-120-00  
DRAWING NO: **S203**  
POOLER, GA



**FOURTH FLOOR FRAMING PLAN**  
1/8"=1'-0" FLOOR TRUSS BRG EL. = 30'-11"



Order Plans @ WWW.LDILine.com