



RULE JOY TRAMMELL RUBIO
ARCHITECTURE INTERIOR DESIGN
300 Galleria Parkway Suite 740 Atlanta, Georgia 30338
770-661-1492 (phone) 770-661-1493 (fax)
www.rjtrdesign.com

FOUNDATION PLAN NOTES:

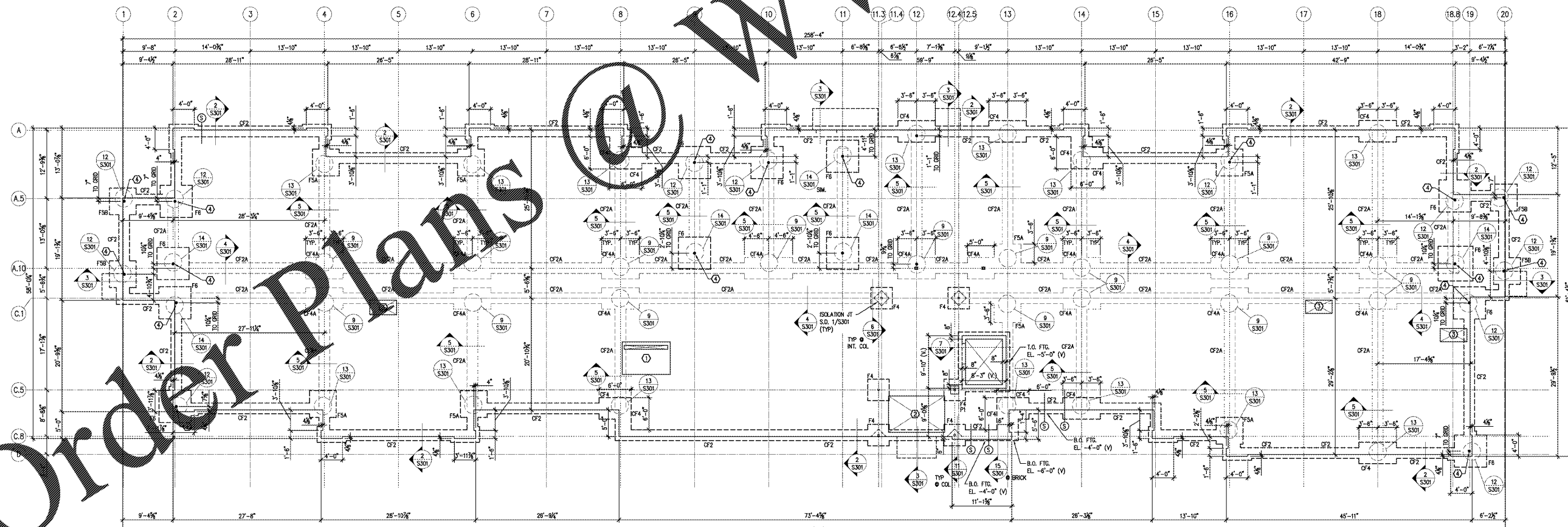
- SEE DETAIL 1/S301 FOR GENERAL FOUNDATION DETAILS. SEE SHEET S301 FOR GENERAL CONCRETE AND FOUNDATION NOTES.
- TYPICAL INTERIOR SLAB ON GRADE, U.N.O. THICKNESS = 4" REINFORCEMENT = FIBERESH UNO IN GEOTECH REPORT BASE = MIN OF 6" COMPACTED GRANULAR FILL VAPOR RETARDER/DAMPEN = 10 MIL POLY T.O. SLAB ELEVATION = 0'-0"
- TYPICAL SLAB ON GRADE CONTROL JOINTS TO BE CUT INTO SQUARES SPACE @ 10'-0" O.C. MAX. WITH AN ASPECT RATIO OF 1:1.5 MAX U.N.O. ON PLAN. CONTRACTOR TO SUBMIT PROPOSED CONTROL JOINT & CONSTRUCTION JOINT LAYOUT TO ENGINEER AND ARCH FOR APPROVAL.
- (S) DENOTES FOOTING STEP - S.D. 1/S301.
- SEE SHEAR WALL PLAN S205 FOR CAST-IN-PLACE ANCHOR RODS.
- FOUNDATION DIMENSIONS INDICATE THE OUTSIDE FACE OF PERIMETER SLAB AND CL. OF INTERIOR THICKENED SLAB. (TYP)
- OUTSIDE FACE OF PERIMETER STUDS INSET 1/2" FROM OUTSIDE FACE OF SLAB. (TYP)
- CENTER FTG./THICKENED SLAB ON 2x WALL ABOVE U.N.O.
- S.D. 16/S301 FOR DUMPSTER ENCLOSURE CMU WALL AND FOUNDATION. SEE ARCH. FOR LOCATION ON SITE.

PLAN KEYNOTES	
LABEL	NOTE
1	WASHER PAD, VERIFY SIZE & LOCATION W/ ARCH. & EQUIPMENT SUPPLIER. SEE DETAIL 10/S301.
2	DEPRESS SLAB FOR WALK-OFF MAT. SEE ARCH. FOR SLAB ELEVATION, DIMENSIONS & ELEVATION.
3	RECESSED SLAB FOR ROLL-IN SHOWER.
4	VERIFY DIMENSIONS & SLAB ELEVATION W/ ARCH. SHEARWALL TENSION ROD ANCHOR INTO PAD FOOTING - SEE SHEET S205 FOR SIZE AND EMBED DEPTH. SEE DETAIL FOR ADDITIONAL REINFORCEMENT REQUIRED AT ANCHOR.

FOOTING SCHEDULE					
MARK	SIZE	THICKNESS	LONGITUDINAL REINFORCEMENT	TRANSVERSE REINFORCEMENT	NOTES/COMMENTS
F3-6	3'-6" SQ.	1'-0"	(4) #5	(4) #5	-
F4	4'-0" SQ.	1'-0"	(4) #5	(4) #5	-
F5	5'-0" SQ.	1'-0"	(5) #5	(5) #5	-
F5A	5'-0" SQ.	3'-0"	(5) #5	(5) #5	T&B MATS
F5B	5'-0" SQ.	2'-0"	(5) #5	(5) #5	T&B MATS
F6	6'-0" SQ.	3'-0"	(6) #5	(6) #5	T&B MATS

CONTINUOUS FOOTING SCHEDULE					
MARK	SIZE	THICKNESS	LONGITUDINAL REINFORCEMENT	TRANSVERSE REINFORCEMENT	NOTES/COMMENTS
CF2	2'-0" CONT.	1'-0"	(2) #5 CONT.	#4 @ 4'-0" O.C.	-
CF2A	2'-0" CONT.	1'-0"	(2) #5 CONT.	#4 @ 4'-0" O.C.	THICKENED SLAB
CF4	4'-0" CONT.	2'-0"	(4) #5	#5 @ 1'-0" O.C.	T&B MATS
CF4A	4'-0" CONT.	2'-0"	(4) #5	#5 @ 1'-0" O.C.	THICKENED SLAB T&B MATS

CONCRETE PIER SCHEDULE		
MARK	DETAIL	NOTES/COMMENTS
P1	8/S301	-



FOUNDATION PLAN

1/8"=1'-0" EXTERIOR T.O. FTG. EL. = 1'-0" U.N.O. INTERIOR T.O. FTG. EL. = 1'-0" U.N.O.



1301 Sandman Avenue, Suite 500 - Marietta, GA 30066
770-227-0022 www.SandmanEng.com Project: 18-120-00

ISSUED FOR PERMIT
FOUNDATION PLAN

EXTENDED STAY OF AMERICA

POOLER, GA



PRINTED
DATE 11/01/18
ISSUE/REVISION FOR PERMIT

COMMISSION NO. 18-120-00
DRAWING NO. S101