

GENERAL STRUCTURAL NOTES:

- 1. THE GOVERNING BUILDING CODE IS THE INTERNATIONAL BUILDING CODE (IBC) 2012 EDITION WITH GEORGIA STATE AMENDMENTS AS APPROVED AND AMENDED BY THE CITY OF POOLER, GA.

DESIGN CRITERIA/DESIGN LOADS:

Table with 2 columns: SNOW LOAD DESIGN CRITERIA, and rows for GROUND SNOW LOAD, SNOW IMPORTANCE FACTOR, EXPOSURE FACTOR, THERMAL FACTOR.

Table with 2 columns: ROOF DESIGN LOADS, and rows for LOAD TYPE, SNOW LOAD, RAIN LOAD, LIVE LOAD, DEAD LOAD.

Table with 2 columns: FLOOR DESIGN LOADS, and rows for DESCRIPTION, DEAD LOAD (D), LIVE LOAD (L), NOTES.

Table with 2 columns: RAIN LOAD DESIGN CRITERIA, and rows for RAIN INTENSITY, DRAIN AREA, MAIN/SECONDARY DRAIN, RAIN DEPTHS.

Table with 2 columns: SEISMIC DESIGN CRITERIA, and rows for RISK CATEGORY, IMPORTANCE FACTOR, SITE CLASS, MAPPED SPECTRAL RESPONSE, SPECTRAL RESPONSE COEFFICIENT, BASIC SEISMIC FORCE-RESISTING SYSTEM, ANALYSIS PROCEDURE USED.

SHOP DRAWING & DEFERRED DESIGN SUBMITTAL NOTES:

- 1. CONTRACTOR TO FURNISH COMPLETE AND DETAILED SHOP DRAWING & SUBMITTALS FOR REVIEW AND APPROVAL BY THE EOR. THE FOLLOWING ARE REQUIRED FOR THIS PROJECT.

FOUNDATION NOTES:

- 1. FOOTINGS ARE DESIGNED FOR A NET ALLOWED SOIL BEARING PRESSURE OF 2000 psf FOR STRIP FOOTINGS AND 2000 psf FOR PAD FOOTINGS. THESE VALUES ARE PER THE GEOTECHNICAL REPORT BY TERRACON CONSULTANTS, INC. ISSUED ON AUGUST 15, 2018, REPORT #251807.

CONCRETE AND STEEL REINFORCEMENT NOTES:

- 1. CONCRETE AND STEEL REINFORCEMENT SHALL CONFORM TO AMERICAN CONCRETE INSTITUTION (ACI) CODES AND SPECIFICATIONS, LATEST EDITION.

WOOD FRAMING NOTES:

- 1. WOOD AND TIMBER CONSTRUCTION SHALL COMPLY WITH THE AMERICAN INSTITUTE OF WOOD CONSTRUCTION (AIWC) STANDARD SPECIFICATIONS.

ROOF / FLOOR WOOD SHEATHING DIAPHRAGM NOTES:

- 1. ALL PANELS SHALL HAVE A STAMP BY AN APPROVED WOOD ASSOCIATION (APA) APPROVED AGENT VERIFYING THE PRODUCT REQUIREMENTS.

METAL PLATE CONNECTED WOOD TRUSSES NOTES:

- 1. METAL PLATE CONNECTED WOOD TRUSSES SHALL BE ENGINEERED BY A REGISTERED PROFESSIONAL ENGINEER IN THE STATE OF THE PROJECT. A SEALED COVER SHEET SHALL BE SUBMITTED WITH THE SHOP DRAWINGS AT THE TIME OF SUBMITTAL.

STRUCTURAL STEEL NOTES:

- 1. STRUCTURAL STEEL SHALL BE DETAILED, FABRICATED, AND ERECTED PER AMERICAN INSTITUTE OF STEEL CONSTRUCTION (AISC) REQUIREMENTS (AISC 360-10, 14TH ED.)

STEEL LINTELS:

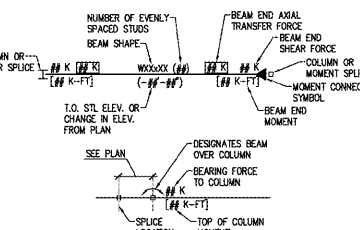


Diagram illustrating the connection of a steel lintel to a beam and column, showing axial transfer force, shear force, and moment.

MASONRY NOTES:

- 1. MASONRY CONSTRUCTION SHALL CONFORM TO THE MASONRY SOCIETY (TMS) - BUILDING CODE REQUIREMENTS AND SPECIFICATIONS FOR MASONRY STRUCTURES, LATEST EDITION.

Table with 2 columns: SHEET #, SHEET NAME, COMMENTS.

Table with 2 columns: SHEET #, SHEET NAME, COMMENTS.

Table with 2 columns: SHEET #, SHEET NAME, COMMENTS.

POST INSTALLED ANCHORS:

- 1. POST INSTALLED ANCHORS NOTED ON PLAN AND/OR DETAILS NOTED SHALL BE AS FOLLOWS (U.G.A.). IF ALTERNATIVE ANCHORS ARE DESIRED, CONTRACTOR MUST SUBMIT PRODUCT DATA FOR APPROVAL BY THE STRUCTURAL ENGINEER PRIOR TO ORDERING OF MATERIALS.

Vertical banner for 'EXTENDED STAY OF AMERICA' featuring 'RULE JOY TRAMMELL RUBIO ARCHITECTURE + INTERIOR DESIGN' and 'SANDMAN Structural Engineers'. Includes contact info for Atlanta, Georgia and Pooler, GA.

Vertical banner with 'ISSUED FOR PERMIT STRUCTURAL NOTES' and 'EXTENDED STAY OF AMERICA'.

SANDMAN Structural Engineers logo and contact information.

PROJECT INFORMATION: PROJECT NO. 18-12209, DRAWING NO. S001.