

**KEY NOTES**

- PROVIDE FIRE RATED IN WALL BLOCKING TO SUPPORT TV MOUNT AS REQUIRED BY MANUF. COORDINATE TV BRACKET WITH TV SPECIFICATION. COORDINATE ELECTRICAL/TV DATA LOCATIONS WITH PLACEMENT OF TV WALL BRACKET.
- PROVIDE BLOCKING IN CEILING AND DOOR JAMB FOR OFFSET PIVOT HARDWARE (RUSON 117-14 PIVOT SET). REFER TO MANUFACTURERS INSTALLATION DETAILS FOR HARDWARE ATTACHMENT POINTS.
- COUNTER TOP MOUNTED CREDIT CARD READER. REFER TO MANUFACTURERS CUTSHEETS FOR MOUNTING REQUIREMENTS. CONCEAL ALL ATTACHMENT POINTS.
- ADJUSTABLE SHELVING.
- PRINTER ON PULL-OUT TRAY W/ HEAVY DUTY FULL EXTENSION GLIDES & FLIP DOWN DOOR WITH CONCEALED PIANO HINGE.
- PROVIDE 12X12 ACQUISITION PANEL FOR ACCESS TO DATA/ELECTRICAL/FLOOR BOX.
- NOT USED.
- PROVIDE CAM LOCKS. FINISH ON CABINET DOOR AND CASH DRAWER. REFER TO RICHELEU 206192143 BRUSHED NICKEL PULLS. REFER TO ELEVATION 7 FOR EXACT LOCATIONS.
- PROVIDE 2" DIAMETER GROMMET.
- PROVIDE WIRE/CABLE ORGANIZATION CHANNEL. CUTTER PLASTICS ITEM #CW450-BK.
- POWER PACK BY ELECTRI-CABLE. WIRE LES ITEM #LJ02VD 5M-12" W/ FACE PLATE ITEM #J02VD FP-BL. ROUTE WIRE THROUGH MILLWORK DOWN TO FLOOR BOX. COORDINATE TELECOM/PLATE PORTS WITH OPERATORS EQUIPMENT REQUIREMENTS FOR PHONE AND DATA.
- CASH DRAWER. PROVIDE 20" W X 3.5" H MIN INTERIOR CLEAR DIMENSIONS FOR CASH DRAWER. CONFIRM SIZE REQUIREMENT WITH OPERATOR'S CASH DRAWER DIMENSIONS.

**WWW.LDIDLINE.COM**

**RULE JOY TRAMMELL RUBIO ARCHITECTURE INTERIOR DESIGN**

300 California Parkway Suite 740 Atlanta Georgia 30303  
770-661-1492 (phone) 770-661-1493 (fax)  
www.rjtdesign.com

PRINTED

DATE	ISSUE/REVISION
11/01/18	Issued for Permit



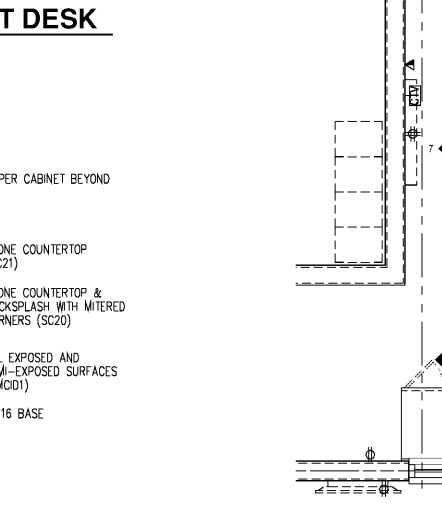
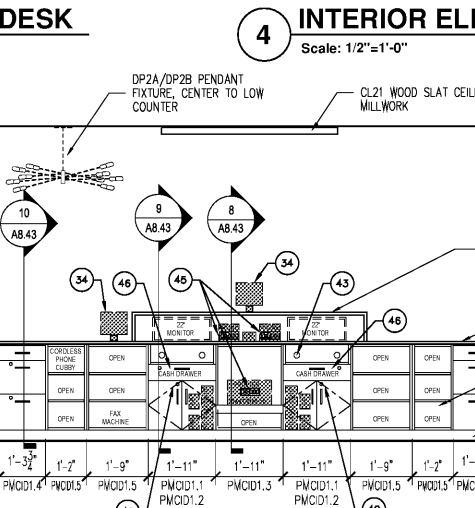
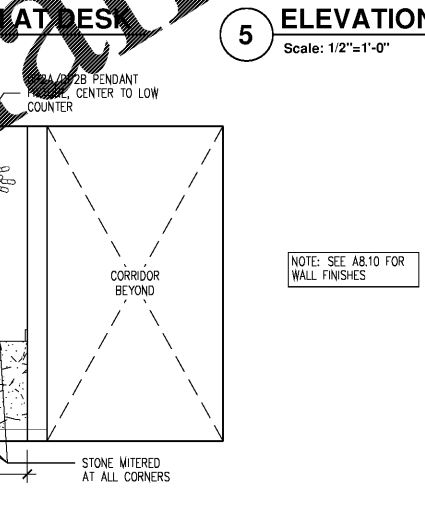
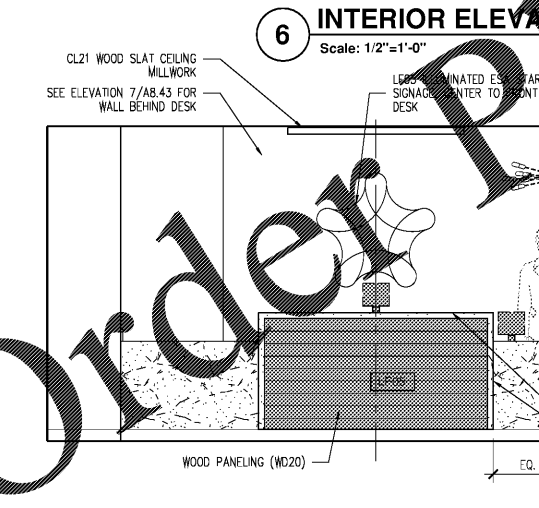
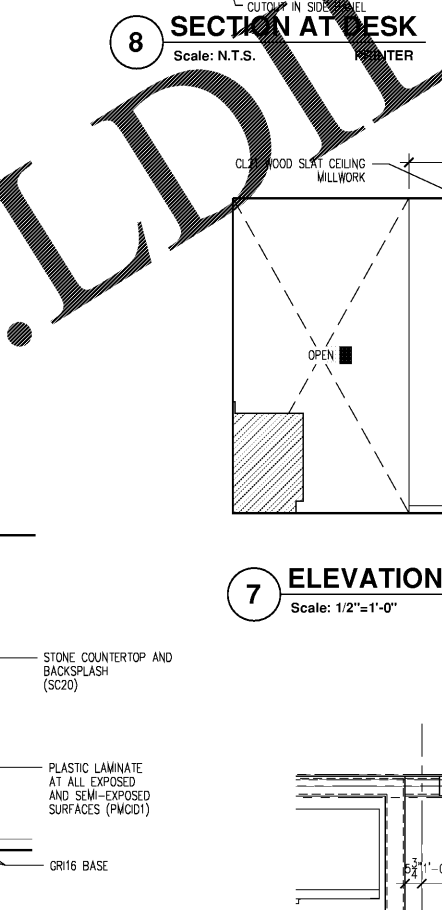
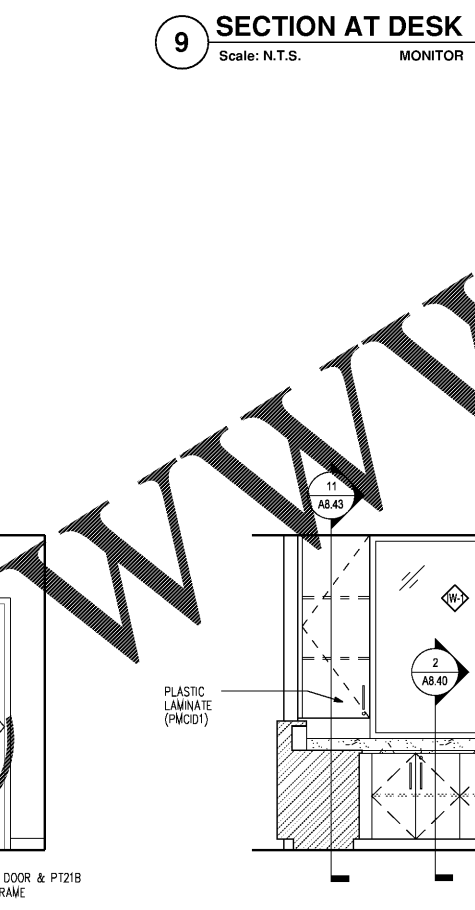
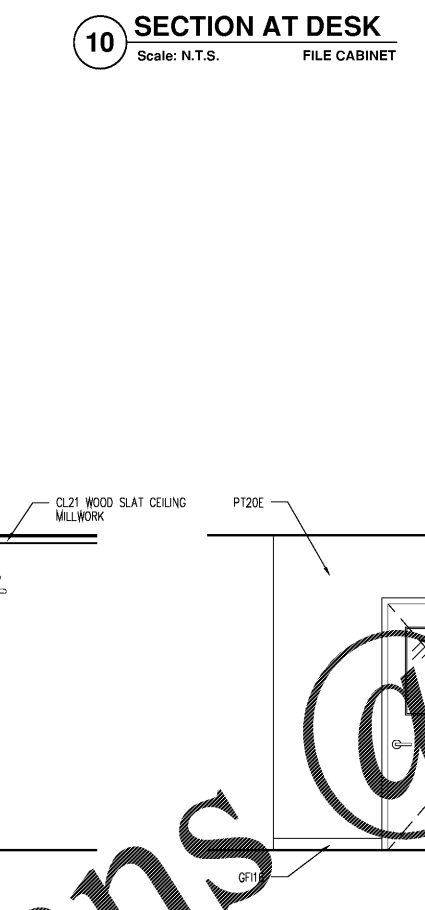
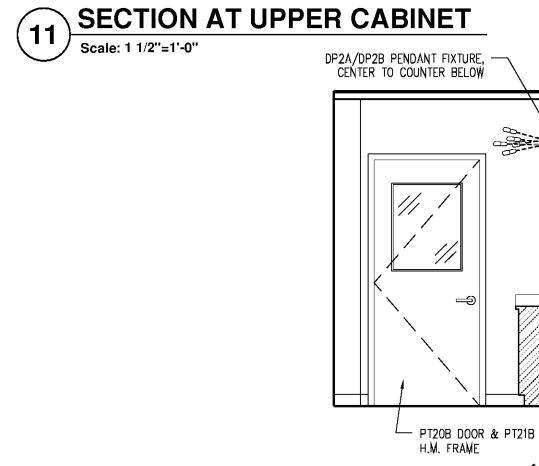
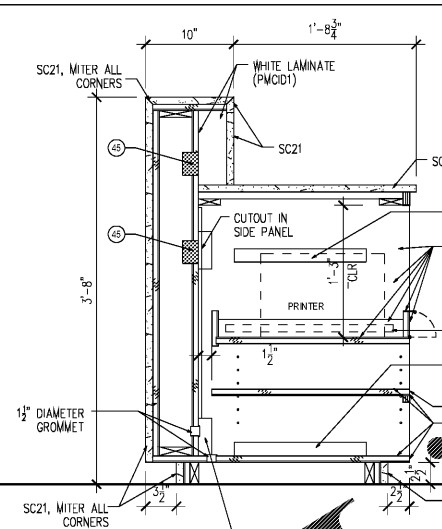
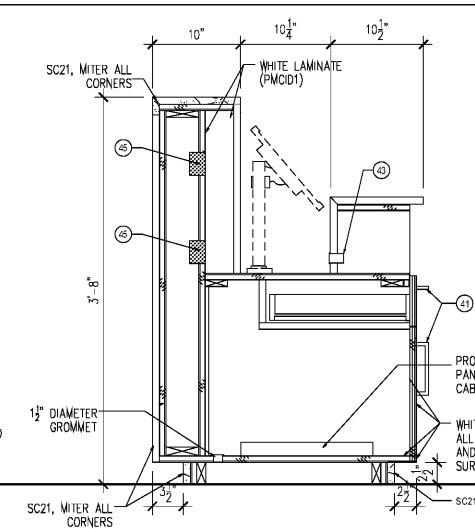
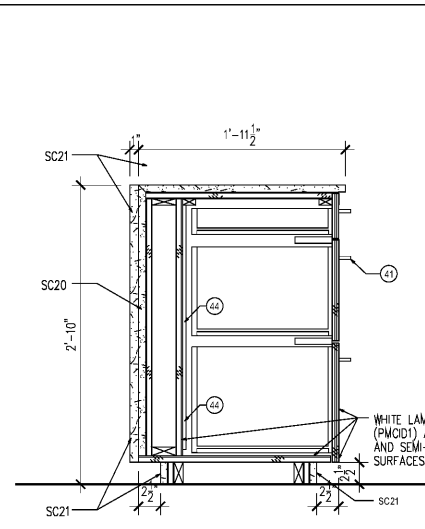
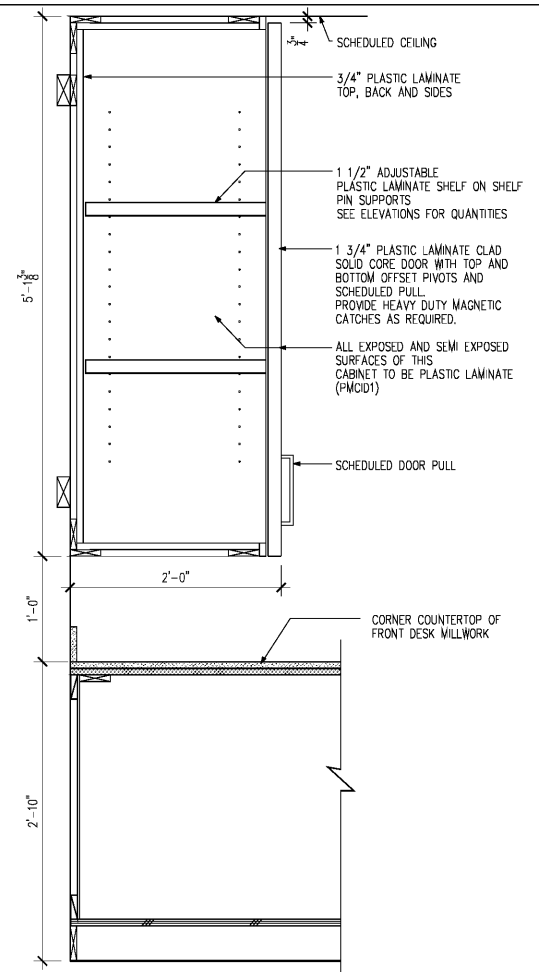
ISSUED FOR CONSTRUCTION

**FRONT DESK DETAILS**

**EXTENDED STAY AMERICA**

COMMISSION NO: 18-274-6  
DRAWING NO: **A8.43**

FOOLER, GA



**Order Plans**