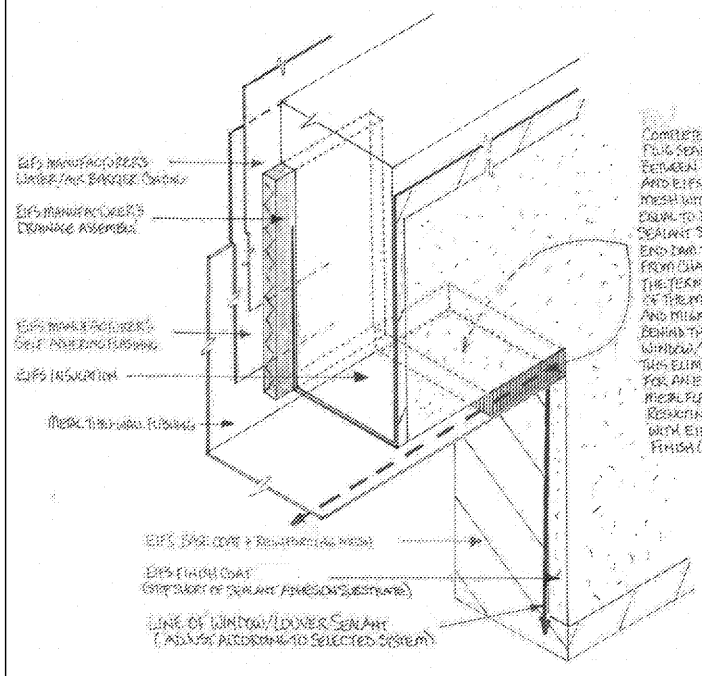
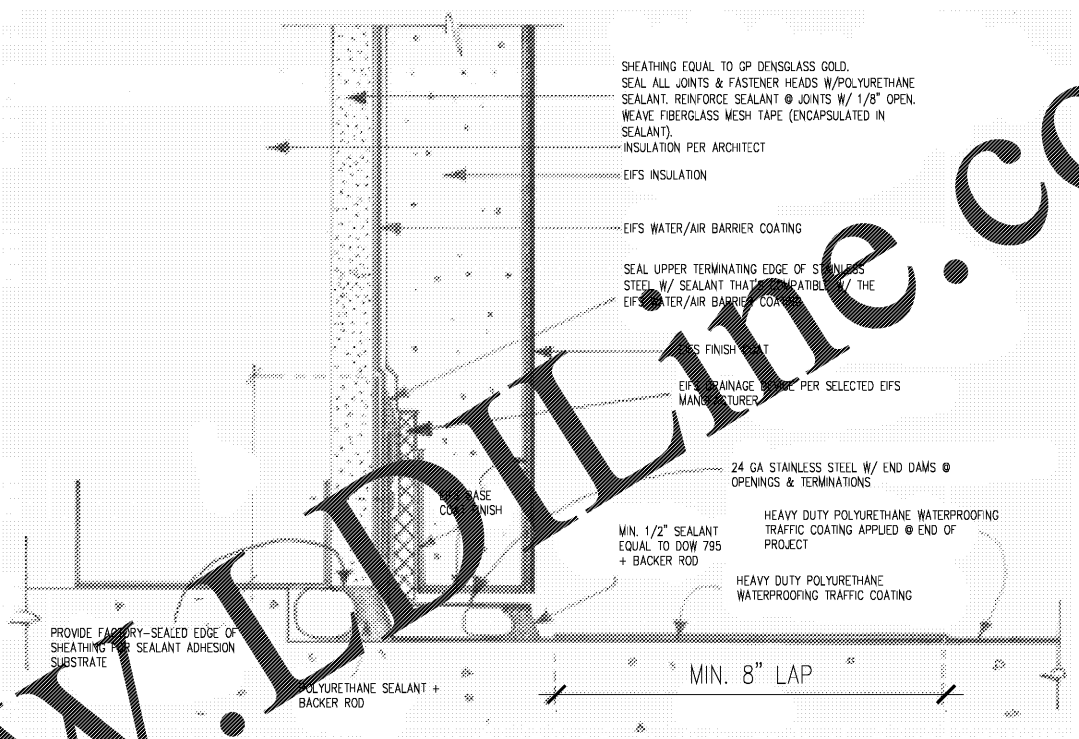


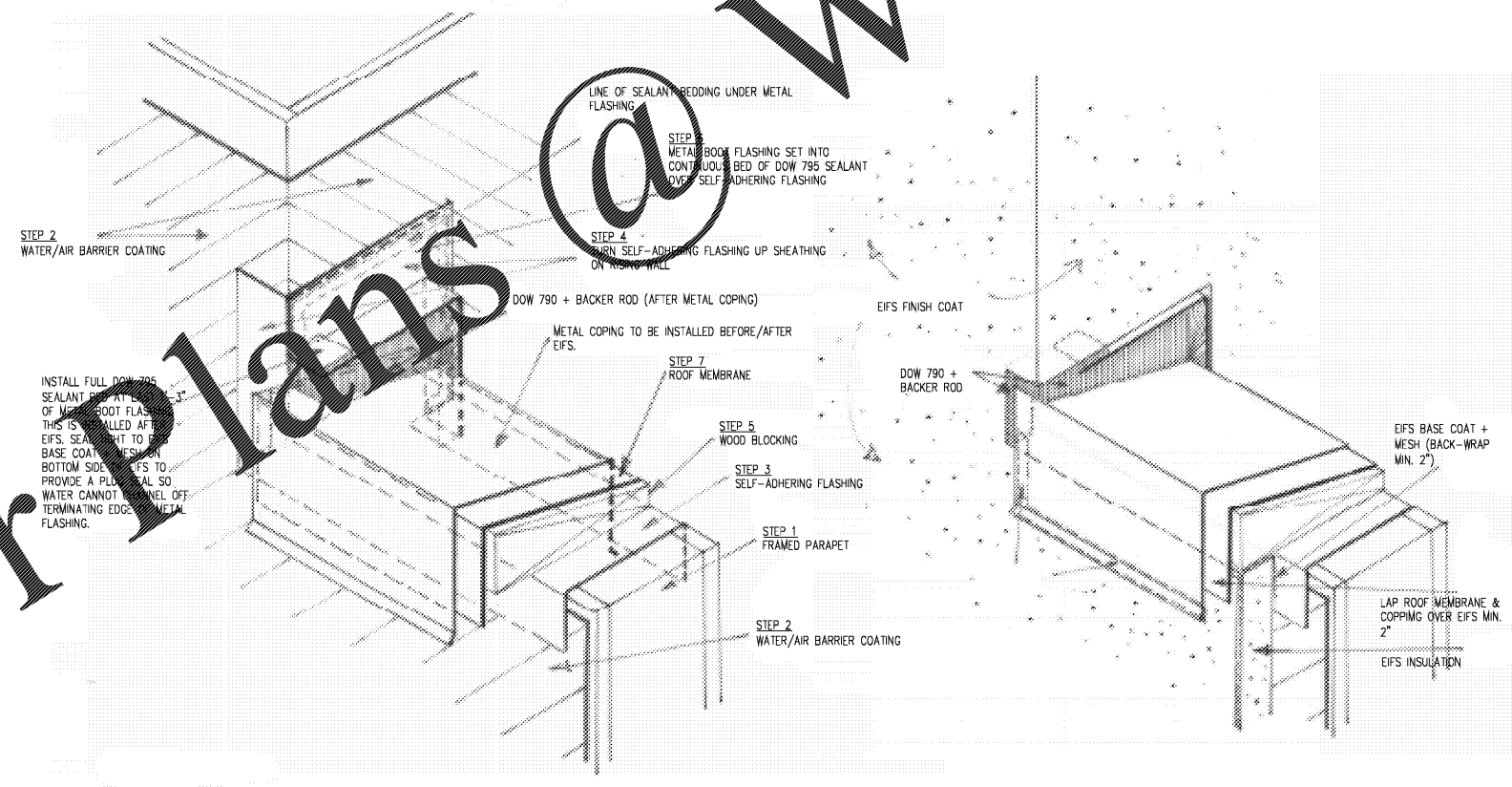
6 EIFS TERMINATION DETAIL
Scale: NOT TO SCALE



5 EIFS DETAIL
Scale: NOT TO SCALE

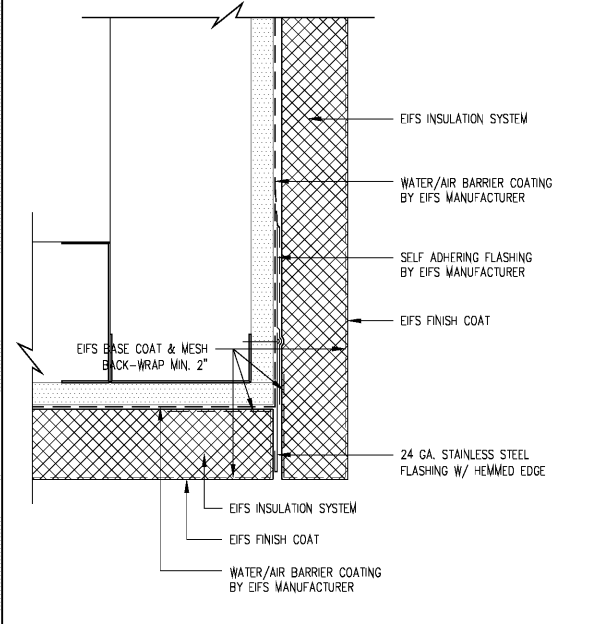


4 EIFS TERMINATION DETAIL
Scale: NOT TO SCALE



3 SEQUENCE 1
Scale: N.T.S.

2 SEQUENCE 2
Scale: N.T.S.



1 TYPICAL THRU-WALL FLASHING
Scale: 6" = 1' - 0"

PRINTED

DATE	ISSUE/REVISION
11/01/18	Issued for Permit

