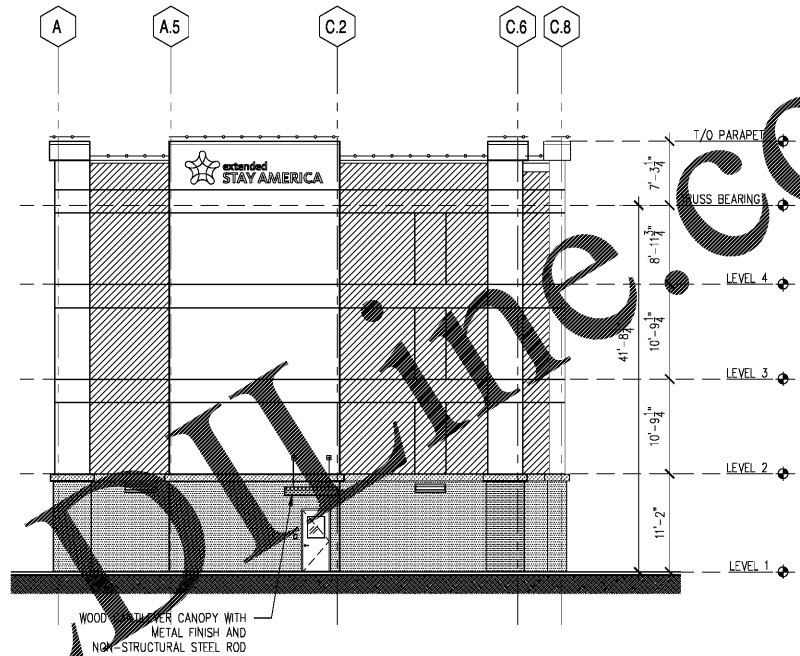


**KEY PLAN**  
Scale:

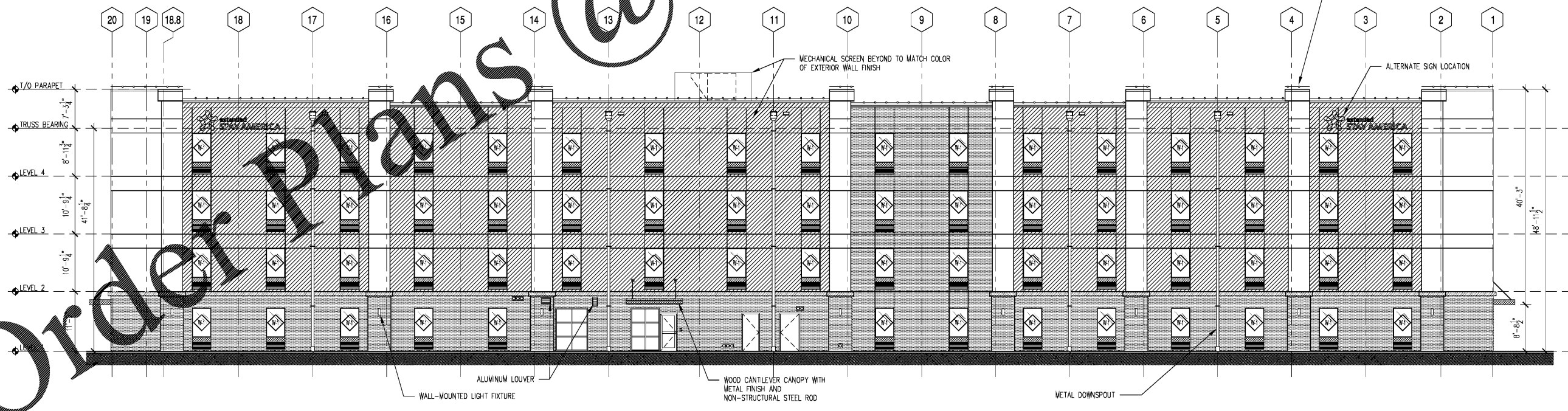
**FINISH LEGEND:**

	KINGSIZE BRICK TO MATCH PPG 1025-1 COMMERCIAL WHITE
	EIFS: PPG 1021-6 CURLEW
	EIFS: PPG 1025-1 COMMERCIAL WHITE
	EIFS: PPG 1025-3 WHISKERS
	EIFS: PPG 1025-4 SHARKSKIN
	EIFS: PPG 14-13 OYSTER SHELL
	METAL: CP410 BRONZESTONE

- NOTES:**
1. ALL RESIDENTIAL UNIT WINDOWS TO BE INSULATED VINYL UNITS, NON OPERABLE
  2. BALANCE OF WINDOWS TO BE ALUMINUM UNITS WITH INSULATED GLASS
  3. SEE SHEET A5.30 FOR WINDOWS ELEVATIONS & NOTES
  4. SEE SHEET A5.11 & A5.12 FOR COLOR LEGEND
  5. PROVIDE ELECTRICAL SERVICES AT EACH SIGNAGE LOCATION



**2 WEST ELEVATION**  
Scale: 1/8"=1'-0"



**1 NORTH ELEVATION**  
Scale: 1/8"=1'-0"

**RTR**  
RULE JOY TRAMMELL RUBIO ARCHITECTURE INTERIOR DESIGN  
300 Galleria Parkway, Suite 740, Atlanta, Georgia 30303  
770-661-1492 (phone), 770-661-1493 (fax)  
www.rtrdesign.com

PRINTED

DATE	ISSUE/REVISION
11/01/18	Issued for Permit



**NORTH & WEST BUILDING ELEVATIONS - COLOR LEGEND**  
**EXTENDED STAY AMERICA**  
FOOLER, GA

ISSUED FOR CONSTRUCTION  
COMMISSION NO: 18-2546  
DRAWING NO:

**A5.12**