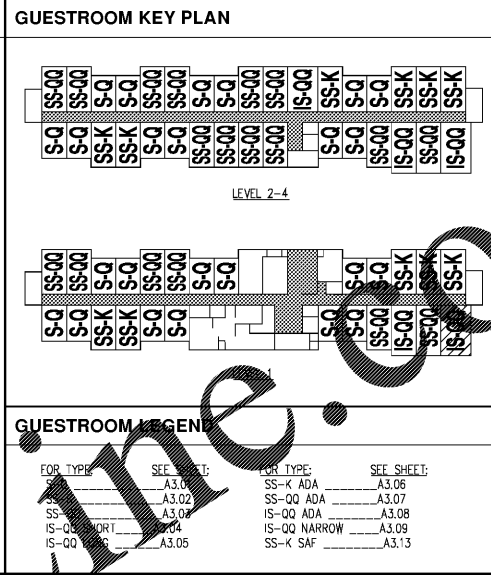


- PLAN KEY NOTES**
- 1 PTAC UNIT (GAP7)
 - 2 DUAL ROLLER SHADE WITH CONTINUOUS FASCIA PANEL (OFC), SEE FINISH SCHEDULE. MANUFACTURER TO FIELD VERIFY WINDOW SIZES, ROLLER SHADE IN ADA GUESTROOMS TO BE NOTORIZED AND TYPICAL GUESTROOMS TO BE MANUAL.
 - 3 3-PIECE SHOWER ENCLOSURE SYSTEM WITH BASE (TL31) AND GLASS SHOWER DOORS, SEE DIFFERENTIATION MATRIX.
 - 4 NOT USED
 - 5 COORDINATE TV WITH AV/IT AND FFE.
 - 6 WATERPROOFING MEMBRANE - TO BE PROVIDED OVER SELF-LEVELING CONCRETE FLOOR UNDERLAYMENT ACROSS ENTIRE RESTROOM FLOOR. IN SHOWER ENCLOSURE - SLOPE TILE AT MAX. 1/8" PER FOOT. THE REMAINDER OF THE RESTROOM FLOOR IN THE ADA RESTROOM IS TO BE SLOPED UP TO SHOWER EDGE WITH MAX. 1/8" PER FOOT.
 - 7 ELECTRICAL PANEL, SEE INTERIOR ELEVATIONS FOR INSTALLATION LOCATION.
 - 8 MECHANICAL CHASE IN 2X8 WALL, SEE MECHANICAL DRAWINGS.
 - 9 WHITE PVC SILL (WS01) PAINTED & CAULKED TO SPECS.

- GENERAL NOTES**
1. ALL DIMENSIONS ARE TO FACE OF STUD, UNO.
 2. ALL INTERIOR GUESTROOM PARTITIONS SHALL BE TYPE 62, UNO.
 3. ALL INTERIOR DEVISING PARTITIONS SHALL BE TYPE 1-70S, UNO.
 4. ALL FLOORS SHALL BE PROPERLY PREPARED LEVEL TO RECEIVE NEW FLOOR FINISHES AND PRODUCTS. FLOOR SLAB TO BE PREPARED LEVEL AND SMOOTH TO COMPLY WITH CARPET AND TILE MANUFACTURERS' WARRANTY REQUIREMENTS. COORDINATE TOLERANCES WITH VENDORS AND CORRECT FLOOR FLATNESS AND FLOOR DIPS PRIOR TO INSTALLATION OF AFFECTED PRODUCTS.
 5. PROVIDE 12"x12" FIELD OF FULLY FINISHED AND GROUTED SAMPLES FOR APPROVALS OF ALL TILE FINISHES.
 6. REFER TO LEGEND ON SHEETS AT.06 & AT.07 FOR FF&E, OSA&E, FINISHES, PLUMBING, EQUIPMENT AND TOILET ACCESSORY ITEMS.
 7. SEE REFLECTED CEILING PLANS FOR CEILING FIXTURE AND DIFFUSER TYPES & LOCATIONS.
 8. SEE GUESTROOM FINISH PLANS FOR FLOORING LIMITS.
 9. SEE SHEET AT.04A & AT.04B FOR TYPICAL ADA CLEARANCES & MOUNTING REQUIREMENTS.
 10. SEE SHEET AB.01 FOR DOOR SCHEDULE AND ELEVATIONS.
 11. REFER TO INTERIOR ELEVATIONS FOR BATHROOM ACCESSORY MOUNTING HEIGHTS & POSITIONS.
 12. REFER TO INTERIOR ELEVATIONS FOR WALL-MOUNTED DEVICE INSTALLATION HEIGHTS. ALL OUTLETS CENTERED @ 18" A.F.F. U.N.O. ALL SWITCHES CENTERED @ 48" A.F.F. U.N.O.
 13. WHERE SWITCHES AND/OR OUTLETS ARE ADJACENT, PLACE IN MULTI-GANG BOX, NOT MULTIPLE SINGLE-GANG BOXES.
 14. REFER TO INTERIOR ELEVATIONS FOR EXTENT OF WALL FINISHES.
 15. SEE COMPLETE FLOOR PLANS IN A1 SERIES FOR ROOM TYPE LOCATIONS.
 16. PROVIDE BASE MOUNTED DOOR STOP.
 17. REFER TO INTERIOR FINISH LEGEND FOR MILLWORK FINISHES.



RULE JOY TRAMMELL RUBIC ARCHITECTURE INTERIOR DESIGN
 3000 Galloway Parkway Suite 740 Atlanta Georgia 30303
 770-661-1492 (phone) 770-661-1493 (fax)
 www.rjtinteriordesign.com

PRINTED

DATE	ISSUE/REVISION
11/01/18	Issued for Permit



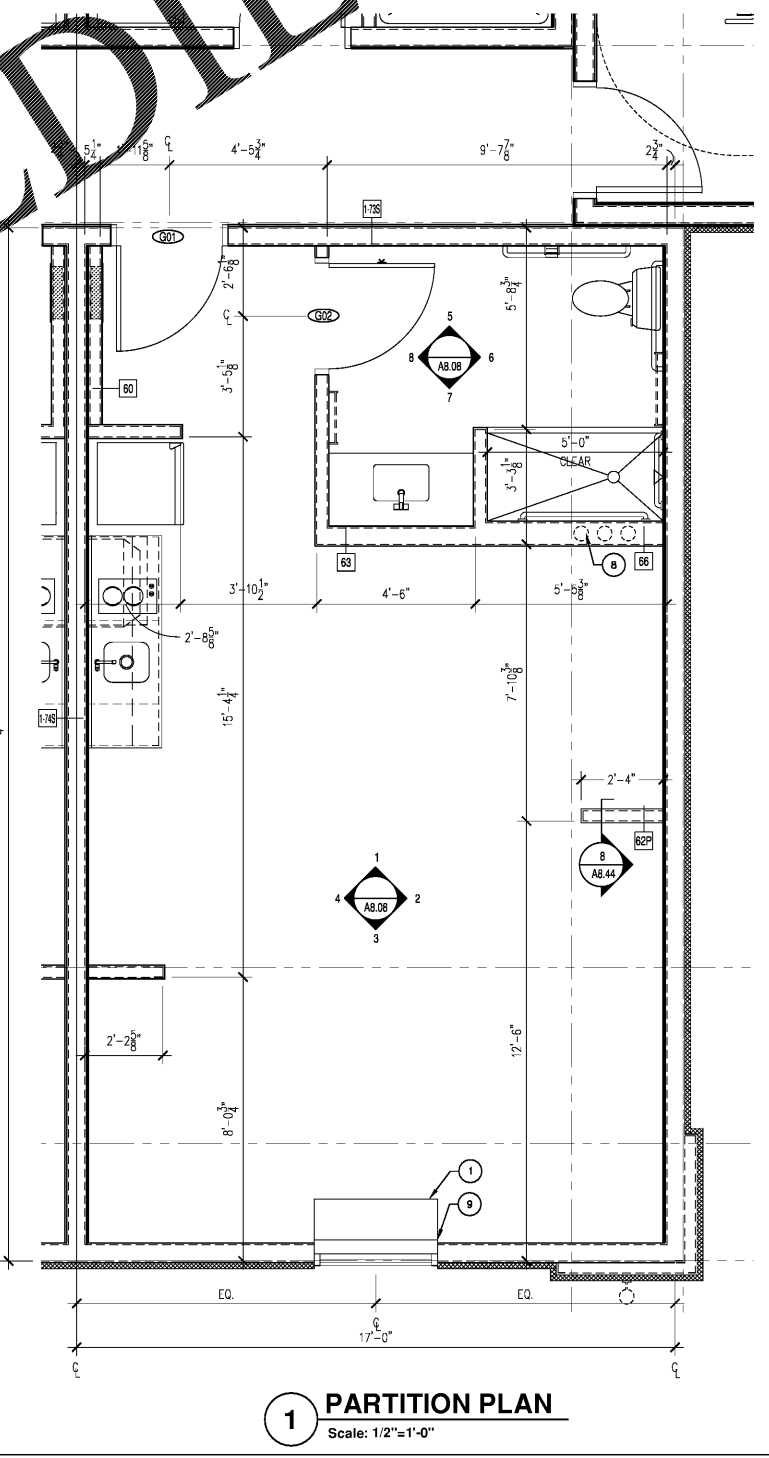
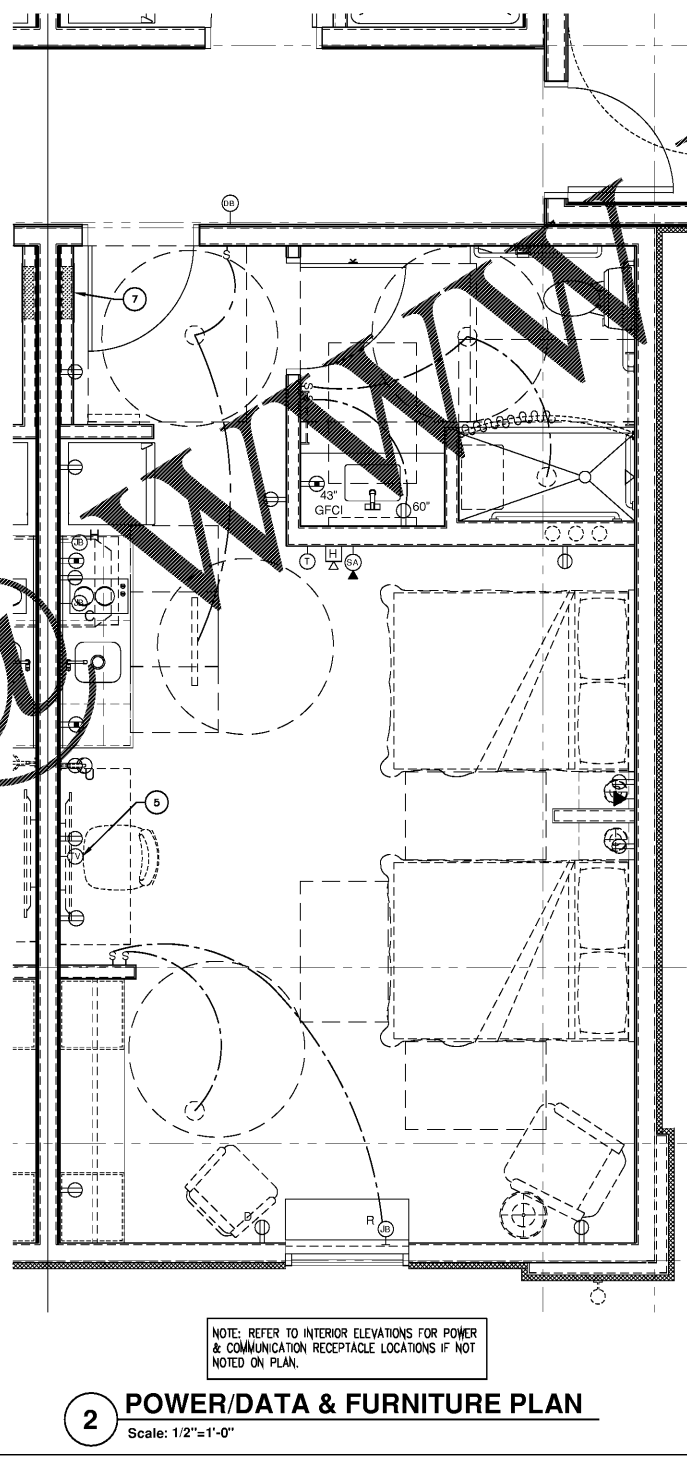
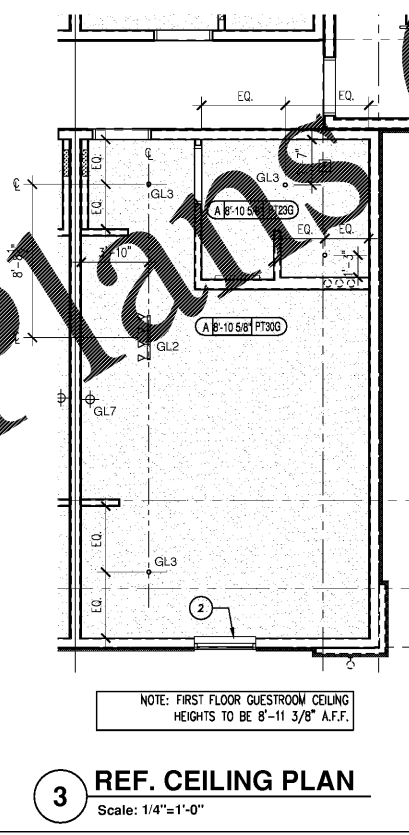
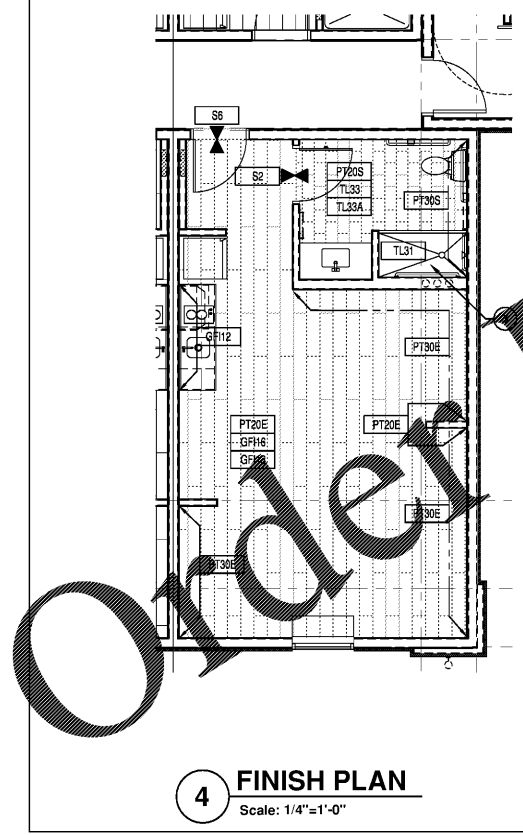
ISSUED FOR CONSTRUCTION

IDEAL STUDIO DOUBLE QUEEN (ADA)

EXTENDED STAY AMERICA

COMMISSION NO: 18-210-6
 DRAWING NO: **A3.08**

POOLER, GA



Order Plans @ WWW.LDILLINE.COM