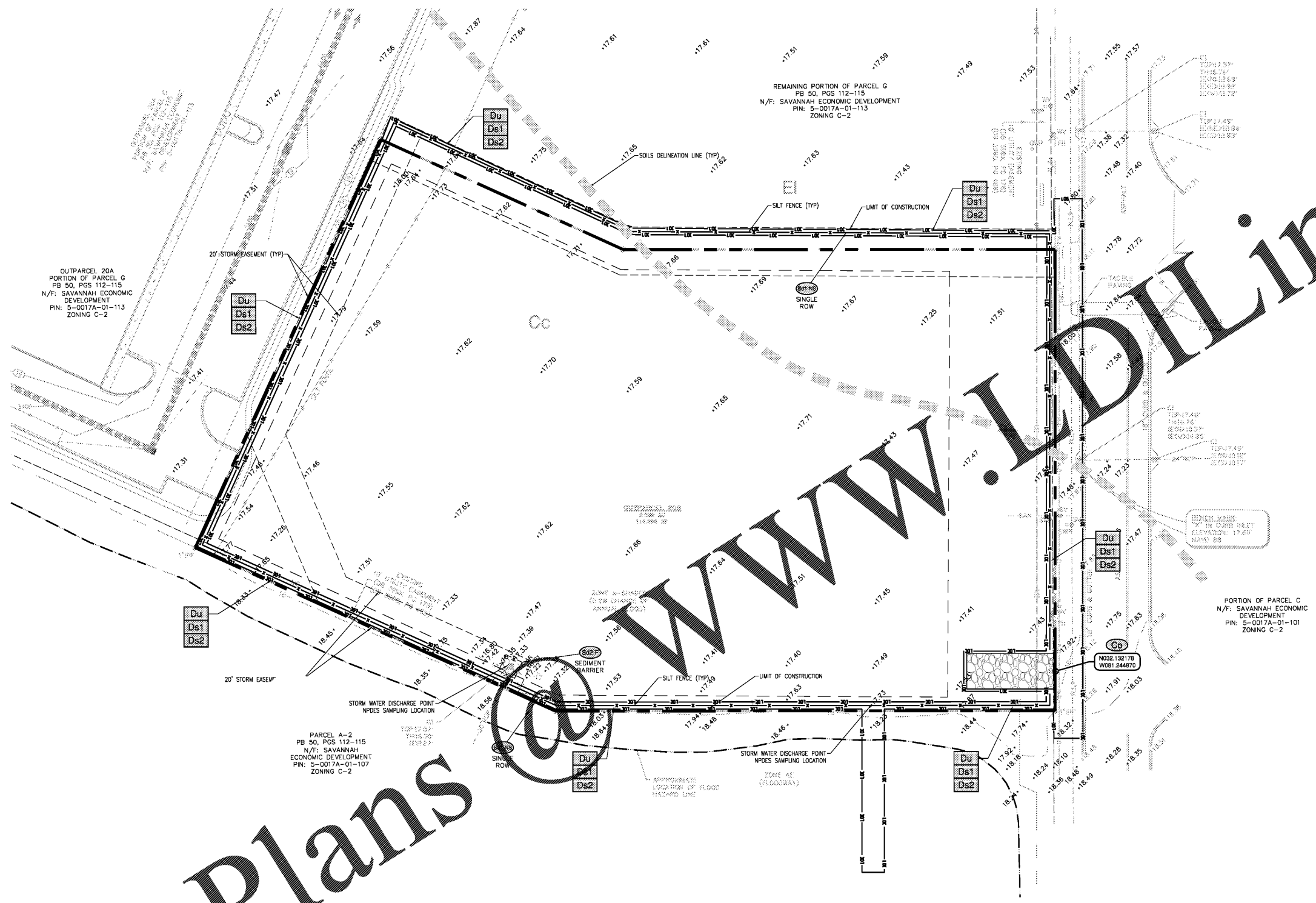


© 2018 COLEMAN COMPANY, INC. DATE PLOTTED: 4/25/2018 8:17:53 AM BY: PAGES\Wmcc DRAWING PATH: C:\18-426\000\DWG\18-426-ES1C.DWG



OUTPARCEL 20A
PORTION OF PARCEL G
PB 50, PGS 112-115
N/F: SAVANNAH ECONOMIC
DEVELOPMENT
PIN: 5-0017A-01-113
ZONING C-2

REMAINING PORTION OF PARCEL G
PB 50, PGS 112-115
N/F: SAVANNAH ECONOMIC DEVELOPMENT
PIN: 5-0017A-01-113
ZONING C-2

PORTION OF PARCEL C
N/F: SAVANNAH ECONOMIC
DEVELOPMENT
PIN: 5-0017A-01-101
ZONING C-2

PARCEL A-2
PB 50, PGS 112-115
N/F: SAVANNAH
ECONOMIC DEVELOPMENT
PIN: 5-0017A-01-107
ZONING C-2

SEQUENCE OF CONSTRUCTION

- INITIAL PHASE:**
- INSTALL PERIMETER CONSTRUCTION TO INCLUDE SILT FENCING AND CONSTRUCTION ENTRANCE. PROVIDE AREA WITHIN SITE FOR CONCRETE WASH-OUT AND REMOVAL. ON-SITE DRAIN WASH-OUT IS PROHIBITED. LIMIT CLEARING AND GRUBBING OF SITE TO ONLY AREAS NECESSARY FOR CONSTRUCTION AS SHOWN (SILT FENCE & CONSTRUCTION ENTRANCE).
- INTERMEDIATE PHASE:**
- MASS GRADE SITE TO FINAL ELEVATIONS.
 - INSTALL UNDERGROUND UTILITIES INCLUDING WATER LINES, SANITARY SEWER AND STORM SYSTEMS.
 - INSTALL LINEAR PROTECTION/SEDIMENT STORAGE AROUND SPECIFIED INLETS AND SEDIMENT BASIN.
- FINAL PHASE:**
- REMOVE SEDIMENT STORAGE AROUND SPECIFIED INLETS.
 - INSTALL CURBING, SIDEWALKS, PAVEMENT SECTIONS, PAVEMENT INLET PROTECTIONS AND FINE GRADE SITE FOR LANDSCAPING.
 - INSTALL LANDSCAPING AND STABILIZE ALL REMAINING DISTURBED AREAS.
 - REMOVE ALL TEMPORARY EROSION CONTROL MEASURES AND STABILIZE DISTURBED AREAS ACCORDINGLY.

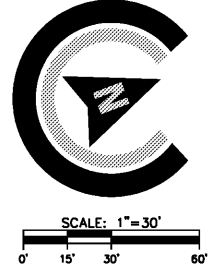
RATIONALE FOR SEDIMENT STORAGE IN SILT FENCE IN INITIAL PHASE:

THE ONLY LAND THAT IS BEING DISTURBED IN THE INITIAL PHASE IS THE SILT FENCE AREA AND CONSTRUCTION ENTRANCE. THIS INITIAL PHASE IS A LINEAR PROJECT AS DEFINED BY THE EROSION CONTROL MANUAL. LINEAR PROJECTS CAN UTILIZE SILT FENCE FOR SEDIMENT STORAGE. ALSO, THE DISTURBED AREA IN THE INITIAL PHASE IS LESS THAN 1 ACRE. FINALLY, THE WAY THE EXISTING SITE IS CONFIGURED, MUCH MORE AREA WOULD NEED TO BE DISTURBED IN THE INITIAL PHASE TO INCLUDE SEDIMENT BASINS AND DIVERSION SWALES TO CONVEY WATER AND SEDIMENT TO SAID BASINS. THIS, SEDIMENT STORAGE IN SILT FENCE IS THE BEST OPTION FOR SEDIMENT STORAGE IN THE INITIAL PHASE.

SEDIMENT STORAGE REQUIREMENTS:

DISTURBED AREA (INITIAL): 1360 LF SILT FENCE X 3 FT WIDE DISTURBANCE = 4080 SF
 REQUIRED STORAGE (INITIAL): 0.12 AC X 87 CY/AC = 8.21 CY = 222 CF
 STORAGE PROVIDED (INITIAL): 115 CY = 3195 CF
 STORAGE PROVIDED > REQUIRED STORAGE
 3,105 CF > 222 CF; THEREFORE ADEQUATE STORAGE IS PROVIDED IN THE INITIAL PHASE.

SOILS LEGEND	
Cc	CAPE FEAR SOILS
Ei	ELLABELLE LOAMY SAND



DESIGN PROFESSIONAL'S CREDENTIALS:
 ENGINEER'S NAME (PRINTED): TRAVIS BURKE, PE
 GEORGIA PE NUMBER: 31215
 GSWCC LEVEL II CERTIFICATION NUMBER: 8134

COLEMAN COMPANY
 ENGINEERS • SURVEYORS
 Savannah, Georgia | (912) 266-4041 | CCI-SAV.COM

NOT FOR CONSTRUCTION

REVISIONS:

CIVIL CONSTRUCTION PLANS FOR
EXTENDED STAY HOTEL
 LOCATED IN POOLER, GEORGIA
 PREPARED FOR TANGER OUTLET

NRCS ORIGINAL SUBMITTAL: 8/23/2018
 NRCS SECOND SUBMITTAL: 10/17/2018

JOB NUMBER: 18-426
 DATE: 8/23/18
 DRAWN BY: JWR
 CHECKED BY: TGB
 SCALE: AS NOTED

INITIAL ES & PC

SHEET:
CE1.0