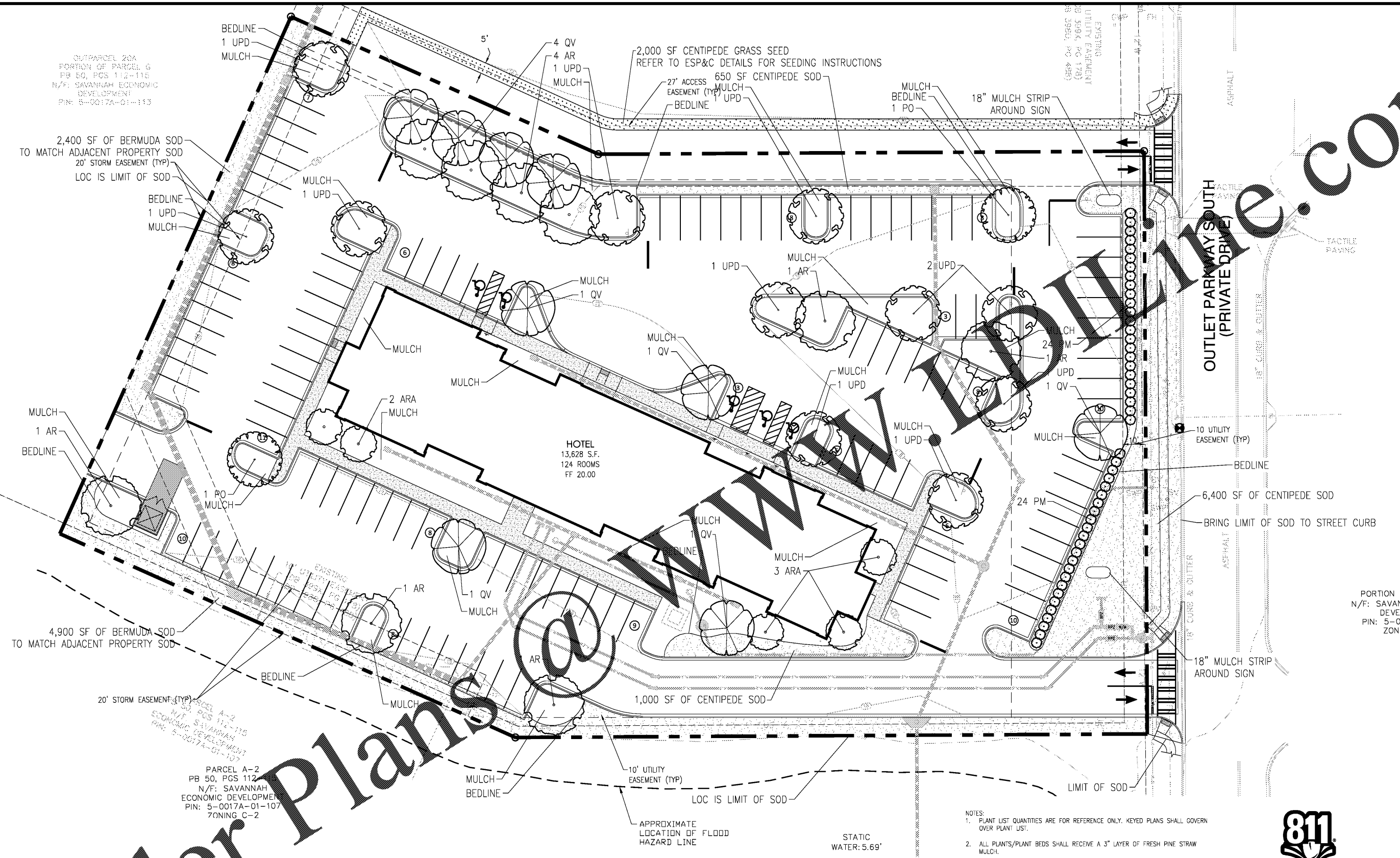


© 2018 COLEMAN COMPANY, INC. DATE PLOTTED: 4/15/2018 4:44:48 PM BY: John Robinson DRAWING PATH: O:\18-426\DWG\Landscaping\18-426 Landscape Plan L1.0.dwg



OUTPARCEL 20A
PORTION OF PARCEL G
PB 50, PGS 112-115
N/F: SAVANNAH ECONOMIC
DEVELOPMENT
PIN: 5-0017A-01-113

PARCEL A-2
PB 50, PGS 112
N/F: SAVANNAH
ECONOMIC DEVELOPMENT
PIN: 5-0017A-01-107
ZONING C-2

CITY OF POOLER REQUIREMENTS:

- MINIMAL TREE COVERAGE**
- 2.639 DEVELOPABLE ACRES
 - REQUIRED 15 TREES PER DEVELOPABLE ACRE
 - 2,639 X 15 = 39,585 TREES REQUIRED
 - 35 TREES PROVIDED. SEE PLANT LIST FOR TABULATION
 - 5 TREES REMAINING TO BE PAID INTO THE CITY OF POOLER TREE FUND
 - \$325 X 5 TREES = \$1,625 TO BE PAID INTO TREE FUND
 - EXISTING SITE IS VACANT - NO EXISTING TREES TO BE SAVED.

PLANT LIST

KEY	QUANTITY	BOTANICAL NAME	COMMON NAME	SIZE	SPACING	COMMENTS
AR	9	ACER RUBRUM 'RED SUNSET'	RED SUNSET MAPLE	2" CAL	AS SHOWN	SINGLE STRAIGHT TRUNK, WELL BALANCED
ARA	5	ACER RUBRUM 'ARMSTRONG'	ARMSTRONG RED MAPLE	2" CAL	AS SHOWN	SINGLE STRAIGHT TRUNK, WELL BALANCED
PG	2	PLANTANUS OCCIDENTALIS	AMERICAN SYCAMORE	2" CAL	AS SHOWN	WELL BALANCED HEAD
QV	9	QUERCUS VIRGINIANA	LIVE OAK	2" CAL	AS SHOWN	WELL BALANCED HEAD
UPD	10	ULMUS PARVIFOLIA 'DRAKE'	DRAKE ELM	2" CAL	AS SHOWN	WELL BALANCED HEAD
	35	TOTAL TREES PROVIDED				
PM	48	PODODARPUS MACROPHYLLUS	MAKI PODODARPUS	2" HT	4" O.C.	2' HT MIN. EVENLY SHAPED, SYMMETRICAL
	48	TOTAL SHRUBS PROVIDED				
SOD	8,050 SF	EREMOCHLOA OPHIUROIDES	CENTIPEDE GRASS			2 YEAR CERTIFIED, SEASON PERMITTING
SOD	7,300 SF	CYNDOON DACTYLON 'TIFWAY'	TIFWAY BERMUDA SOD			2 YEAR CERTIFIED, SEASON PERMITTING
SEED	2,000 SF	EREMOCHLOA OPHIUROIDES	CENTIPEDE GRASS			3LB/1000SF, SEASON PERMITTING

- NOTES:**
1. PLANT LIST QUANTITIES ARE FOR REFERENCE ONLY. KEYED PLANS SHALL GOVERN OVER PLANT LIST.
 2. ALL PLANTS/PLANT BEDS SHALL RECEIVE A 3" LAYER OF FRESH PINE STRAW MULCH.
 3. THE GENERAL CONTRACTOR SHALL SUPPLY ROUGH GRADES ±0.2' WITH POSITIVE DRAINAGE PATTERNS ESTABLISHED. THE LANDSCAPE CONTRACTOR WILL FINE GRADE FOR PLANTING OPERATIONS.
 4. SEE SPECIFICATIONS SHEET L1.1 FOR FURTHER INSTRUCTIONS.
 5. TOPSOIL SHALL BE STRIPPED AND STOCKPILED BY THE GRADING CONTRACTOR. STOCKPILED TOPSOIL SHALL BE SPREAD BY THE GRADING CONTRACTOR TO A DEPTH OF 4 INCHES IF QUANTITIES ARE SUFFICIENT. GRADING CONTRACTOR SHALL PROVIDE STOCKPILED TOPSOIL FOR LANDSCAPE CONTRACTOR USE FOR BACKFILLING LANDSCAPE ISLANDS.
 6. ALL PLANT MATERIAL SHALL MEET OF EXCEED SIZE AND SHAPE RELATIONSHIPS SPECIFIED IN THE LATEST EDITION OF THE AMERICAN STANDARD FOR NURSERY STOCK, PUBLISHED BY THE AMERICAN ASSOCIATION OF NURSERYMEN.
 7. ALL SIZES SPECIFIED REFER TO THE SIZE AT THE TIME OF PLANTING.
 8. IRRIGATION SYSTEM TO BE DESIGNED BY CONTRACTOR AND SUBMITTED TO LANDSCAPE ARCHITECT FOR APPROVAL PRIOR TO INSTALLATION.



**Know what's below.
Call before you dig.**



SCALE: 1"=20'
0' 10' 20' 40'

COLEMAN COMPANY
ENGINEERS • SURVEYORS
Savannah, Georgia | (912) 200-3001 | CCI-SAV.COM

NOT FOR CONSTRUCTION

REVISIONS:

LANDSCAPE PLANS FOR
EXTENDED STAY AMERICA
LOCATED IN POOLER, GA
PREPARED FOR TANGER OUTLETS

LANDSCAPE PLAN

SHEET:
L1.0

JOB NUMBER: 18-426
DATE: 08/24/18
DRAWN BY: BMT
CHECKED BY: LJS
SCALE: AS NOTED