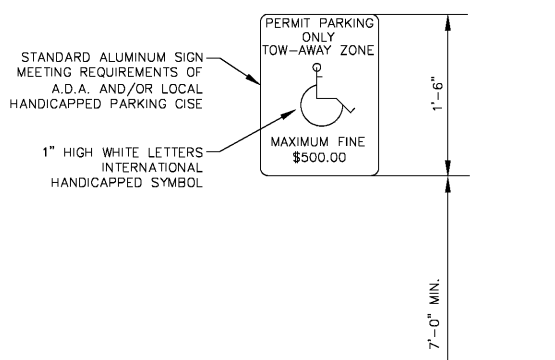
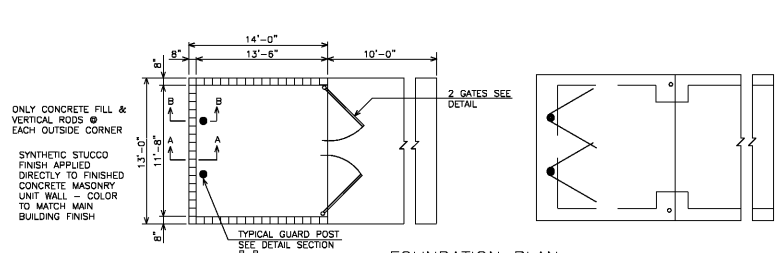


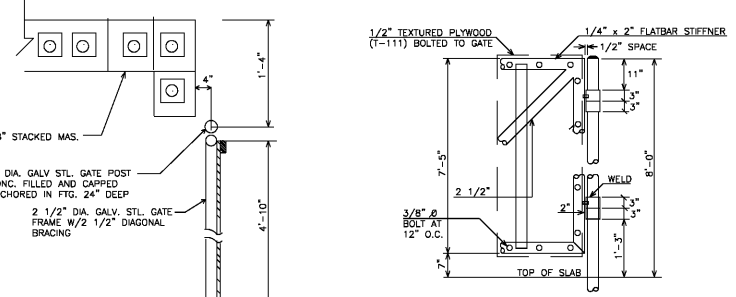
**P-39**  
N.T.S.  
**HANDICAPPED MARKING**  
Coleman Company, Inc.



**P-39**  
N.T.S.  
**HANDICAP SIGN ON BUILDING**  
Coleman Company, Inc.

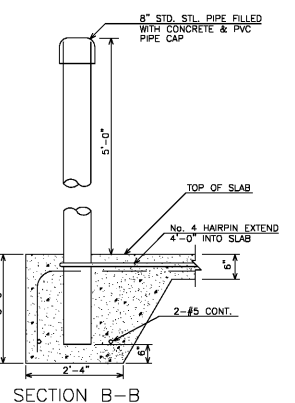


**FOUNDATION PLAN**

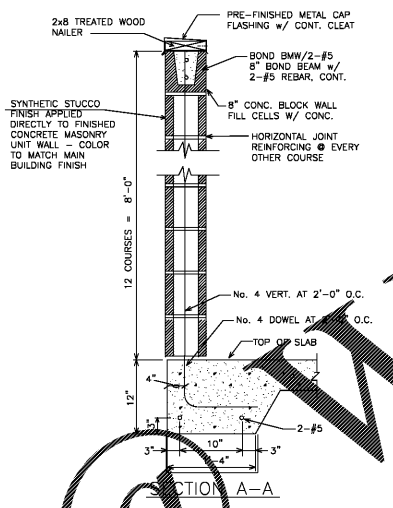


**ELEVATION OF GATE**

**PARTIAL PLAN AT GATE**

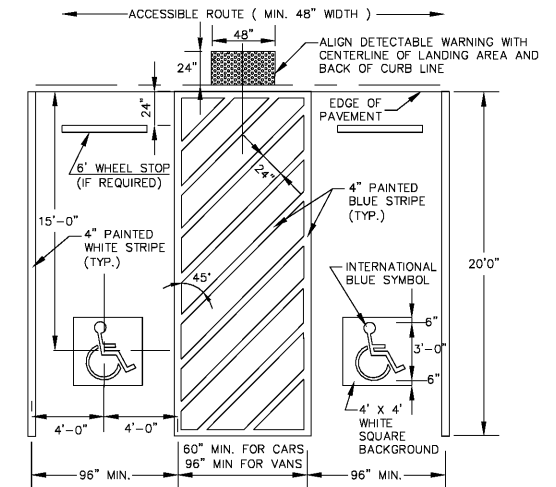


**SECTION B-B**



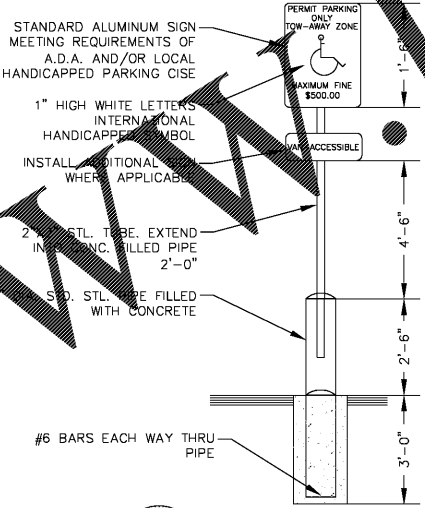
**SECTION A-A**

**P-31**  
N.T.S.  
**DUMPSTER PAD WITH MASONRY FENCE**  
Coleman Company, Inc.

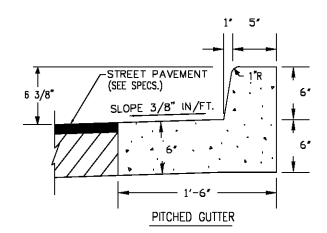


NOTE: STRIPING AND CONSTRUCTION SHALL CONFORM TO ALL APPLICABLE FEDERAL, STATE AND GOVERNING AGENCY CODES AND SPECIFICATIONS

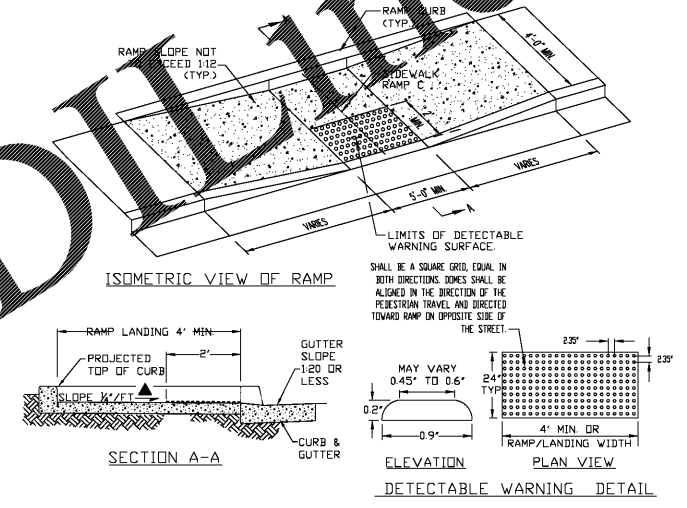
**P-34**  
N.T.S.  
**HANDICAP PARKING STALL STRIPING**  
Coleman Company, Inc.



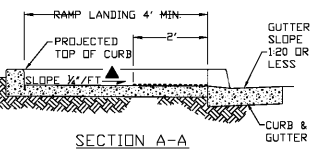
**P-36**  
N.T.S.  
**TYPICAL HANDICAP SIGN**  
Coleman Company, Inc.



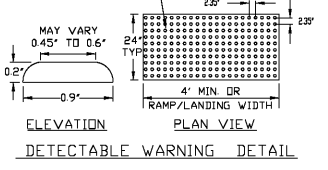
**P-99**  
N.T.S.  
**PITCHED CURB AND GUTTER**  
Coleman Company, Inc.



**ISOMETRIC VIEW OF RAMP**



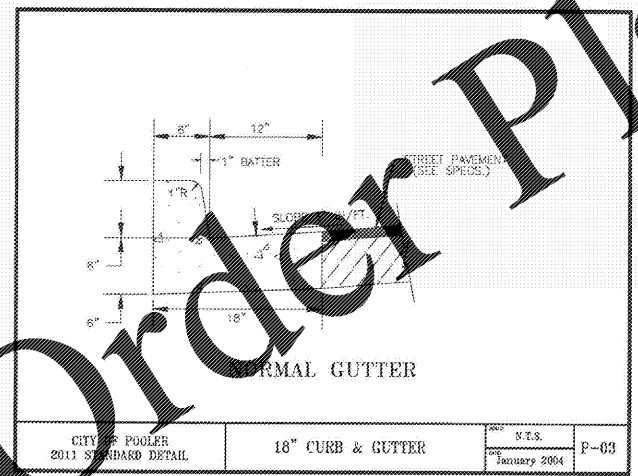
**SECTION A-A**



**ELEVATION PLAN VIEW DETECTABLE WARNING DETAIL**

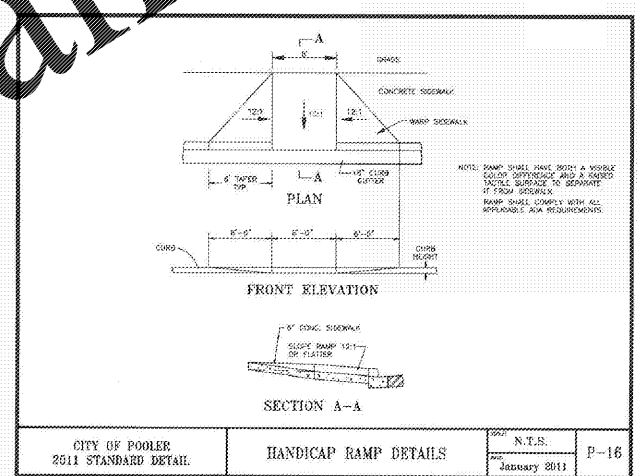
- NOTES:
- HANDICAP RAMP CONSTRUCTION SHALL CONFORM TO ALL FEDERAL, STATE AND GOVERNING AGENCY'S CODES AND SPECIFICATIONS.
  - SURFACES SHALL MEET THE GUIDELINES OF THE ADA STANDARDS FOR ACCESSIBILITY, APPENDIX A, PART 36.
  - THE SLOPE OF THE GUTTER MUST NOT EXCEED 1:20 ADJACENT TO THE RAMP.
  - DETECTABLE WARNING SHALL CONSIST OF RAISED TRUNCATED DOMES WITH A DIAMETER OF NOMINAL 0.9 INCHES, A HEIGHT OF NOMINAL 0.2 INCHES AND A CENTER TO CENTER SPACING OF NOMINAL 2.35 INCHES AND SHALL CONTRAST VISUALLY WITH ADJOINING SURFACES. IF THE SIDEWALK AND RAMP ARE CONSTRUCTED OF CONCRETE, THE WARNING AREA SHALL BE RED BRICK IN COLOR. IF THE SIDEWALK AND RAMP ARE CONSTRUCTED OF RED BRICK, THE WARNING AREA SHALL BE GRAY IN COLOR. THE COLOR USED TO PROVIDE CONTRAST SHALL BE AN INTEGRAL PART OF THE WALKING SURFACE.
  - BRICK PAVERS SHALL BE SET IN A WET MORTAR BED. THE BED SHALL BE PLACED ON CONCRETE. THE CONCRETE SHALL BE A MINIMUM OF FOUR INCHES THICK.

**P-388**  
N.T.S.  
**HANDICAP RAMP**  
Coleman Company, Inc.



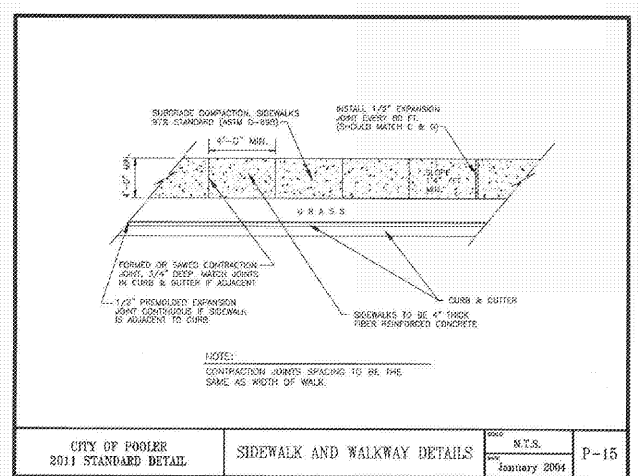
**NORMAL GUTTER**

CITY OF POOLER  
2011 STANDARD DETAIL  
18" CURB & GUTTER  
N.T.S.  
January 2004  
P-03



**SECTION A-A**

CITY OF POOLER  
2011 STANDARD DETAIL  
HANDICAP RAMP DETAILS  
N.T.S.  
January 2011  
P-16



**SIDEWALK AND WALKWAY DETAILS**

CITY OF POOLER  
2011 STANDARD DETAIL  
SIDEWALK AND WALKWAY DETAILS  
N.T.S.  
January 2004  
P-15

**COLEMAN COMPANY**  
ENGINEERS - SURVEYORS  
Savannah, Georgia (912) 200-3041 | CCI-SAV.COM

**NOT FOR CONSTRUCTION**

GEORGIA  
Professional Engineer  
No. 631315  
07/03/2006  
TERRY G. COLEMAN

REVISIONS:


CIVIL CONSTRUCTION PLANS FOR  
**EXTENDED STAY HOTEL**  
LOCATED IN POOLER, GEORGIA  
PREPARED FOR TANGER OUTLET

JOB NUMBER: 18-426  
DATE: 8/23/18  
DRAWN BY: JWR  
CHECKED BY: TGB  
SCALE: AS NOTED

CONSTRUCTION  
DETAILS

SHEET:  
**C8.0**



© 2018 COLEMAN COMPANY, INC. DATE PLOTTED: 10/26/2018 11:10 AM BY: Patrick Warner - DRAWING PATH: O:\18-426\000\DWG\18-426\_Main\_Plan\_P-03.dwg

Order Plans @ WWW.WLDLINE.COM