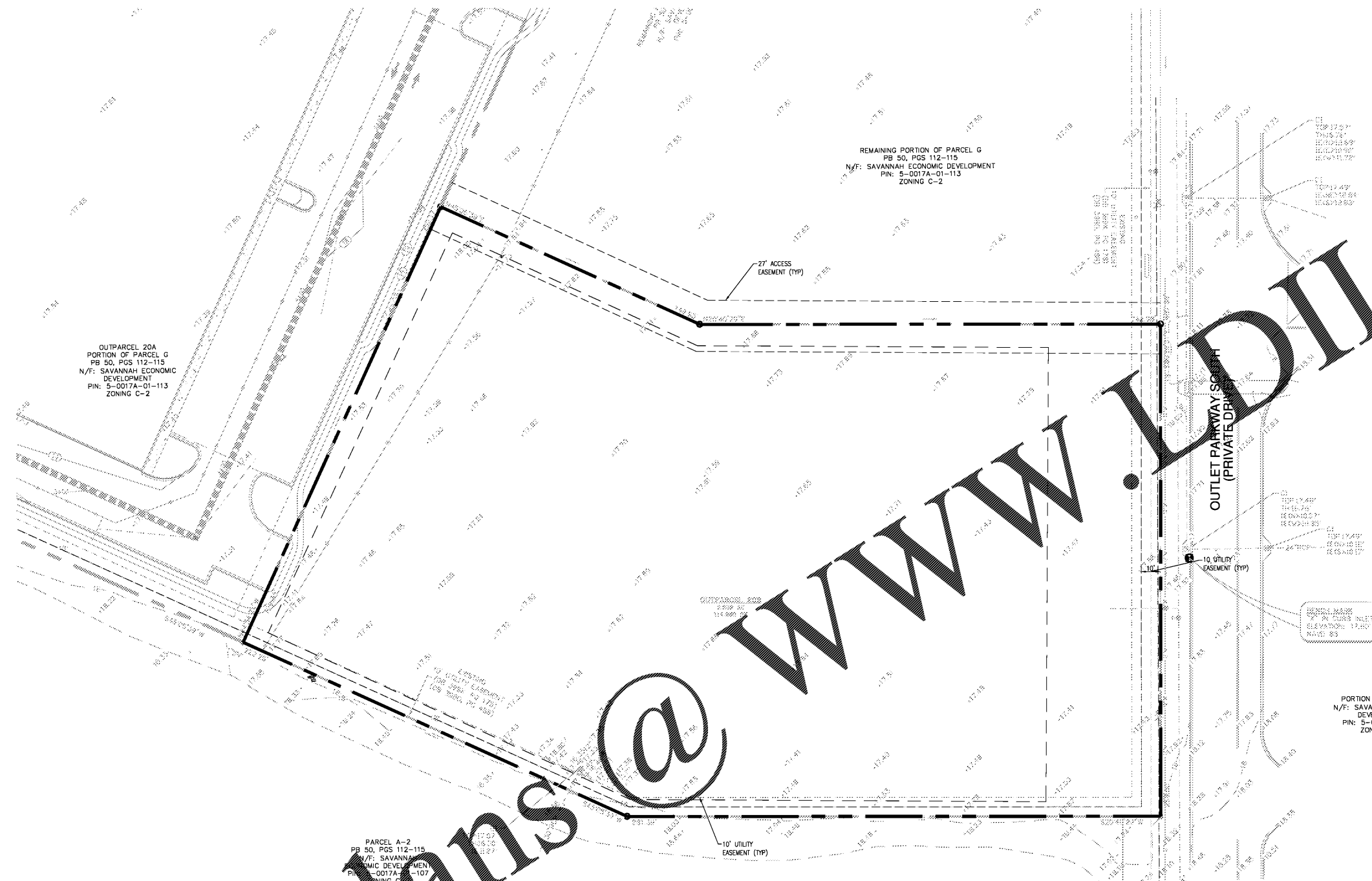


© 2018 COLEMAN COMPANY, INC. DATE PLOTTED: 10/26/2018 10:52 AM BY: Darius Warner - DRAWING PATH: O:\18-426\DWG\18-426 Main Project 8-16-18.dwg



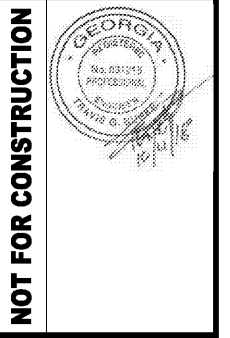
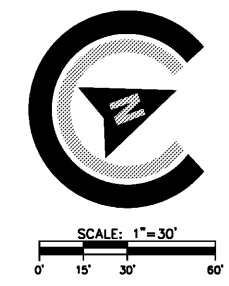
OUTPARCEL 20A
PORTION OF PARCEL G
PB 50, PGS 112-115
N/F: SAVANNAH ECONOMIC
DEVELOPMENT
PIN: 5-0017A-01-113
ZONING C-2

REMAINING PORTION OF PARCEL G
PB 50, PGS 112-115
N/F: SAVANNAH ECONOMIC DEVELOPMENT
PIN: 5-0017A-01-113
ZONING C-2

PARCEL A-2
PB 50, PGS 112-115
N/F: SAVANNAH ECONOMIC DEVELOPMENT
PIN: 5-0017A-01-107
ZONING C-2

PORTION OF PARCEL C
N/F: SAVANNAH ECONOMIC DEVELOPMENT
PIN: 5-0017A-01-101
ZONING C-2

Order Plans @ www.DIline.com



NOT FOR CONSTRUCTION

REVISIONS:

CIVIL CONSTRUCTION PLANS FOR
EXTENDED STAY HOTEL
LOCATED IN POOLER, GEORGIA
PREPARED FOR TANGER OUTLET

JOB NUMBER: 18-426
DATE: 8/23/18
DRAWN BY: JWR
CHECKED BY: TGB
SCALE: AS NOTED

EXISTING CONDITIONS

SHEET:
C2.0