

PANEL LP1											
VOLTAGE 120/240V		PHASE 1 WIRE 3		S.C.C. TBD MIN.		LOCATION ELEC 112		MOUNTING SURFACE			
MAIN AMPS 400				M.L.O.							
CKT	BREAKER AMPS	P	VA	SERVING	PHASE	SERVING	VA	BREAKER AMPS	P	CKT	
1	80	2	9,240	RTU-1	A	LIGHTING	1,615	20	1	2	
3			9,240		B	LIGHTING	1,308	20	1	4	
5	80	2	9,240	RTU-2	A	WATER COOLER	500	20	1	6	
7			9,240		B	MUSEUM RECEPTACLES	900	20	1	8	
9	80	2	9,240	RTU-3	A	THEATER RECEPTACLES	540	20	1	10	
11			9,240		B	MUSEUM RECEPTACLES	1,080	20	1	12	
13	30	2	2,250	EWB-1	A	GENERAL RECEPTACLES	900	20	1	14	
15			2,250		B	BREAK ROOM RECEPTACLES	1,500	20	1	16	
17	40	2	3,000	EWB-2	A	BREAK ROOM RECEPTACLES	1,500	20	1	18	
19			3,000		B	BREAK ROOM RECEPTACLES	1,500	20	1	20	
21	20	1	360	RECEPTACLES	A	REFRIGERATOR	1,000	20	1	22	
23	20	1	360	RECEPTACLES	B	GENERAL RECEPTACLES	1,080	20	1	24	
25				SPACE	A	OFFICE RECEPTACLES	720	20	1	26	
27				SPACE	B	ENTRY RECEPTACLES	1,260	20	1	28	
29	20	1		SPARE	A	HVAC RECEPTACLES	540	20	1	30	
31	20	1		SPARE	B	PROJECTOR AND SCREEN	360	20	1	32	
33	20	1		SPARE	A	MECH. PLATFORM RECEP	720	20	1	34	
35	20	1		SPARE	B	EXTERIOR LIGHTING	220	20	1	36	
37	20	1		SPARE	A	MARQUEE SIGN	360	20	1	38	
39	20	1		SPARE	B	MARQUEE SIGN	360	20	1	40	
VA PER PHASE 41,725				42,898		TOTAL VA 84,623					
AMPS PER PHASE 348				357		DIVERSIFIED VA 83,143					
REMARKS: 1.											

LIGHTING FIXTURE SCHEDULE							
ID	MANUF.	MODEL NUMBER	VOLT.	WATTS	LAMP TYPE	MOUNTING	REMARKS
A	COLUMBIA	LCA724-35HLG-EDU	120	48	3500K LED	RECESSED	ARCHITECTURAL 2X4' WITH FROSTED LINEAR PRISMED LENS
AE	COLUMBIA	LCA724-35HLG-EDU-ELL14	120	48	3500K LED	RECESSED	ARCHITECTURAL 2X4' WITH FROSTED LINEAR PRISMED LENS AND EMERGENCY BATTERY.
B	ELITE	HH6-LED-2000L-MD-40K-SHZ-SHZ	120	27	3500K LED	RECESSED	2000 LUMEN RECESSED DOWNLIGHT
BE	ELITE	HH6-LED-2000L-MD-40K-SHZ-SHZ-EMG-LED	120	27	3500K LED	RECESSED	2000 LUMEN RECESSED DOWNLIGHT WITH EMERGENCY BATTERY
C	COLUMBIA	LCL 4-35K-ML-E-U	120	42	3500K LED	SUSPENDED	LED STRIPLIGHT
CE	COLUMBIA	LCL 4-35K-ML-E-U-ELL14	120	42	3500K LED	SUSPENDED	LED STRIPLIGHT WITH EMERGENCY BATTERY
E	HUBBELL	TRP-1-12L-20-4K7-4-1-PCU-E	120	20	LED	WALL	EXTERIOR EGRESS LIGHT WITH PHOTOCELL AND INTEGRAL BATTERY.
F	OCL	FUH-1-1EG-24-BY ARCH-LED-30	120	50	LED	PENDANT	LED PENDANT 30" OVERALL HEIGHT
G	BEACON	TRV-D-48L110-4K7-T4-UNV-PEC-120-BY ARCH	120	110	4000K LED	WALL	WALL MOUNTED AREA LIGHT, 12546 LUMENS WITH INTEGRAL PHOTOCELL BUTTON.
X	COMPASS	CEGB	120	5	LED	WALL	THERMOPLASTIC EXIT LIGHT, BLACK WITH GREEN LETTERING.

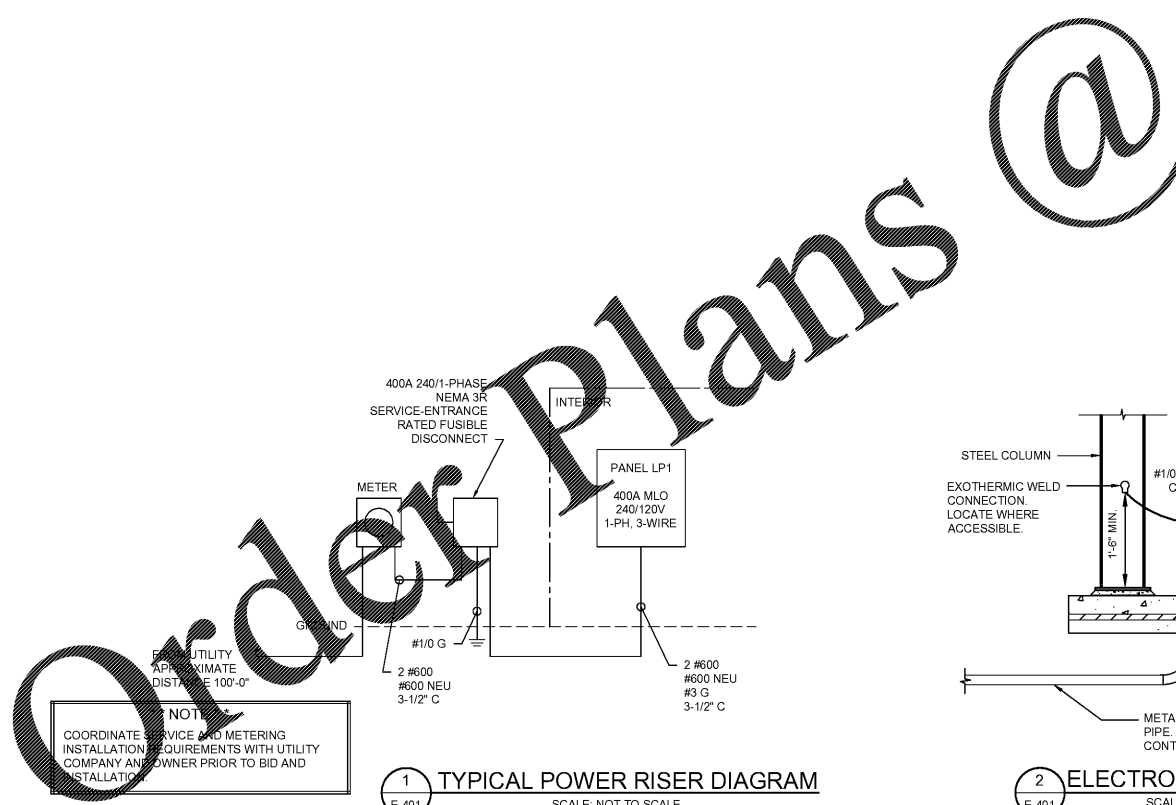
LIGHTING FIXTURE SCHEDULE NOTES:  
COORDINATE ALL FINISH OPTIONS WITH ARCHITECT.

SPECIAL OUTLET SCHEDULE				
ID	VOLTAGE	PHASE	WIRE / COND.	DESCRIPTION
1	120	1	2#12, #12G, 3/4" C.	PROJECTOR, PROVIDE CEILING MOUNTED 2 GANG JUNCTION BOX WITH DUPLEX RECEPTACLE AND DATA PORT.
2	120	1	2#12, #12G, 3/4" C.	PROJECTOR SCREEN MOTOR
3	240	1	2#10, #10G, 3/4" C.	EWB-1 (ABOVE)
4	240	1	2#8, #10G, 3/4" C.	EWB-2
5	120	1	2#12, #12G, 3/4" C.	PROVIDE 2 GANG JUNCTION BOX WITH DUPLEX RECEPTACLE AND DATA PORT. PROVIDE ADDITIONAL 1" CONDUIT TO ABOVE ACCESSIBLE CEILING WITH NYLON PULL STRING. COORDINATE MOUNTING HEIGHT WITH OWNER.
6	120	1	2#12, #12G, 3/4" C.	PROVIDE 2 GANG JUNCTION BOX WITH 2" CONDUIT TO ABOVE ACCESSIBLE CEILING, 3/4" CONDUIT FOR SCREEN CONTROLS, NYLON PULL STRING AND BLANK COVER PLATE. COORDINATE MOUNTING HEIGHT WITH OWNER.

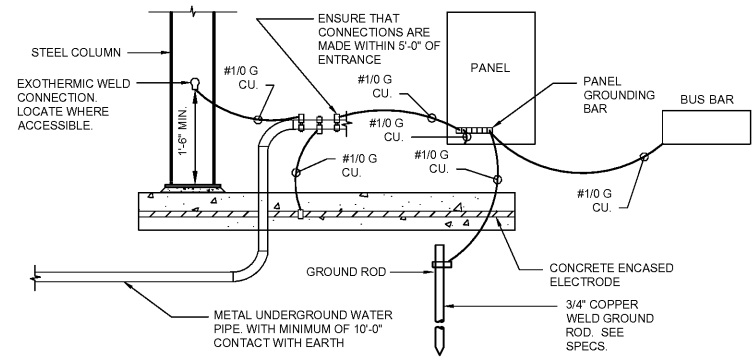
SPECIAL OUTLET SCHEDULE NOTES:  
PROVIDE LOCAL DISCONNECTING FOR DEVICES WITHOUT RECEPTACLE. COORDINATE WITH MOCP.

MOTOR SCHEDULE				
ID	VOLTAGE	PHASE	WIRE / COND.	DESCRIPTION
1	240	1	2#1, #8G, 1-1/4" C.	RTU-1
2	240	1	2#1, #8G, 1-1/4" C.	RTU-2
3	240	1	2#1, #8G, 1-1/4" C.	RTU-3
4	120	1	2#12, #12G, 3/4" C.	EF-1
5	120	1	2#12, #12G, 3/4" C.	EF-2
6	120	1	2#12, #12G, 3/4" C.	EF-3

MOTOR SCHEDULE NOTES:  
PROVIDE LOCAL FUSIBLE DISCONNECTING MEANS FOR EACH MOTOR. COORDINATE WITH MOTOR MOCP.



1 TYPICAL POWER RISER DIAGRAM  
SCALE: NOT TO SCALE



2 ELECTRODE GROUNDING DETAIL  
SCALE: NOT TO SCALE



COLUMBIA COUNTY  
4325 EVANS TO LOCKS RD., EVANS, GA 30809  
PROJECT NAME  
**HARLEM THEATER RENOVATIONS PROJECT**  
PROJECT LOCATION:  
135 N. LOUISVILLE ST., HARLEM, GA 30814



REV	DATE	BY	DESCRIPTION
1	08/14/18	FAK	RE-ISSUE FOR CONSTRUCTION
0	05/09/18	FAK	DESIGN FOR CONSTRUCTION

PROJECT NO. 3045.1704  
DRAWN BY: JFP  
CHECKED BY: FAK  
DATE: 03/26/18  
SHEET TITLE:  
**ELECTRICAL SCHEDULES AND DETAILS**  
SCALE: AS NOTED  
DRAWING NO. **E-401** REV. 1

www.LDOnline.com

This document is the property of Johnson, Laschobar & Associates, P.C. The unauthorized reproduction, copying or otherwise use of this document is strictly prohibited and any infringement thereupon may be subject to legal action.