

PLUMBING FIXTURE SCHEDULE						
MARK	FIXTURE	NOM. PIPE INCHES				DESCRIPTION
		CW	HW	W	V	
P-1	COUNTERTOP LAVATORY (H.C.)	1/2"	1/2"	2"	1 1/2"	AMERICAN STANDARD 0476 028 ACCESSIBLE LAVATORY, AMERICAN STANDARD 7385 050 FAUCET, GRID DRAIN, ANGLE STOPS, & 3/8" SUPPLIES, PLUMBEREX HANDY-SHIELD MODEL 2003
P-2	WATER CLOSET (H.C.)	1/2"	-	4"	2"	AMERICAN STANDARD CADET PRO 215AB 104, 1.28 GAL. FLUSH w/ CHURCH 295CT TOILET SEAT. MOUNT FLUSH OPERATOR ON WIDE SIDE OF TOILET.
P-3	WATER CLOSET	1/2"	-	4"	2"	AMERICAN STANDARD CADET PRO 215CB 104, 1.28 GAL. FLUSH w/ CHURCH 295CT TOILET SEAT.
P-4	URINAL (H.C.)	3/4"	-	2"	2"	AMERICAN STANDARD MODEL ALLBROOK 0.5 6550 001 w/ SLOAN REGAL 186-0.5 3/4" FLUSH VALVE
P-5	SINGLE BOWL SINK	1/2"	1/2"	2"	1 1/2"	JUST SLX-1617-A-GR SINK 16"x17"x10" (3 HOLE), #J-35 STRAINER, AMERICAN STANDARD 4175 200 F15 FAUCET, SUPPLIES, STOP VALVES, AND TRAP
P-6	WATER SINK	1/2"	1/2"	2"	2"	FIAT MODEL MSB-2424 FAUCET 630-AA HOSE & HOSE BRACKET 630-AA HOSE UNDER PRESSURE AND STRAINER
P-7	H/I/O WATER COOLER	1/2"	-	2"	1 1/2"	OASIS VERSACOOLER II MODEL PG8ACSLTM
IB-1	ICE MAKER VALVE	1/2"	-	-	-	IPS WATER TITE MODEL AS9700
3/4"-HB	HOSE BIBB	3/4"	-	-	-	WOODFORD MODEL B26P-3/4 w/ BOX
EWH-1	ELEC. WATER HEATER	3/4"	3/4"	-	-	A.O. SMITH MODEL DEL-30, 30 GALLON CAP. NON-SIMULTANEOUS 4500W, 240/120/60 RECOVERY RATE OF 18 GPH AT A 100° F TEMP. RISE
EWH-2	ELEC. WATER HEATER	1/2"	1/2"	-	-	STIEBEL ELTRON MODEL DHC 6-2 TANKLESS WATER HEATER - 6.0 KW, 240/120/60

- NOTES:
1. ALL FIXTURES, FITTINGS, AND TRIM TO COMPLY WITH THE LATEST REVISION OF THE AMERICAN DISABILITIES ACT, WHERE APPLICABLE.
 2. SUPPORT URINALS w/ WALL HANGERS AND THRU BOLTS.
 3. RIM HEIGHT SHALL COMPLY w/ ADA REQUIREMENTS AND STANDARD MANUFACTURER RECOMMENDED INSTALLATION HEIGHTS FOR NON-ADA FIXTURES.
 4. PLUMBING CONTRACTOR TO COORDINATE w/ COUNTER TOP CONTRACTOR BEFORE ORDERING SINKS.

HANGERS & SUPPORTS				
SPACING: DO NOT EXCEED THE FOLLOWING SPACING, ON CENTERS				
PIPE SIZE	SCH. 40 PVC	COPPER	STEEL	HANGER ROD DIA.
1/2" - 3/4"	4 FT.	5 FT.	7 FT.	1/4"
1"	4 FT.	6 FT.	7 FT.	1/4"
1 1/2"	4 FT.	6 FT.	9 FT.	3/8"
2"	4 FT.	8 FT.	10 FT.	3/8"
2 1/2"	4 FT.	9 FT.	11 FT.	3/8"
3"	4 FT.	10 FT.	12 FT.	3/8"
4"	4 FT.	10 FT.	12 FT.	1/2"

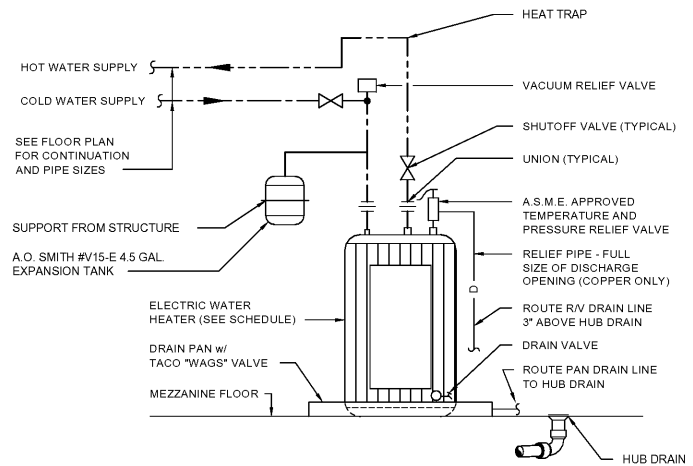
WATER HAMMER ARRESTER SCHEDULE		
SYMBOL	FIXTURE	UNIT RATING
DDI "A"		
DDI "B"		15
PDI		63-60
PDI		61-113
PDI		114-154
PDI		155-330

NOTE:
USE METAL-BELLOWS TYPE WITH PRESSURIZED METAL CUSHIONING CHAMBER, COMPLYING WITH STANDARD P.D.I. WH-201.

FLOOR DRAIN & CLEANOUT SCHEDULE			
SYMBOL	J.R. SMITH SERIES NO.	PROVIDE	NOTES
FD	2010-B	① ②	
GCO			
FCO	4040		
WCO			

FLOOR DRAIN & CLEANOUT ACCESSORIES			
①	②	③	④
PROVIDE 1/2" A.F.C. RECOMMENDED STRAINER SIZE BASED ON OUTLET SIZE	PROSET TRAP GUARD INSERT		

- NOTES:
1. PROVIDE PROSET "T-RITE" DRAINS ON ALL FLOOR/SHOWER/HUB DRAINS THAT ARE THROUGH PENETRATION OF A FIRE RATED FLOOR.
 2. COORDINATE FLOOR FINISHES w/ FLOOR DRAINS AND FLOOR CLEANOUTS. (ADJUST FLOOR DRAIN AND FLOOR CLEANOUT ELEVATIONS AS REQUIRED)



(EWH-1)
ELECTRIC WATER HEATER SCHEMATIC
NO SCALE



CLIENT: COLUMBIA COUNTY
4325 EVANS TO LOCKS RD., EVANS, GA 30809

PROJECT NAME: **HARLEM THEATER RENOVATIONS PROJECT**

PROJECT LOCATION: 135 N. LOUISVILLE ST., HARLEM, GA 30814



REV	DATE	BY	DESCRIPTION
2	08/20/18	CVW	COUNTY REVIEW COMMENTS
1	06/14/18	CVW	REISSUE FOR CONSTRUCTION
0	05/09/18	CVW	ISSUED FOR CONSTRUCTION

PROJECT NO. 3045.1704
DRAWN BY: WBR
CHECKED BY: CVW
DATE: 03/26/18

SHEET TITLE:
PLUMBING SCHEDULES AND DETAILS

SCALE: AS NOTED

DRAWING NO. **P-201** REV. **2**

Order Plans @ www.LDOnline.com