

CLIENT: COLUMBIA COUNTY
   
 CONSTRUCTION AND FACILITIES MANAGEMENT

**HARLEM THEATRE RENOVATIONS PROJECT**

PROJECT LOCATION: THEATRE COLUMBIA - 135 N LOUISVILLE ST., HARLEM, GA 30814



REV	DATE	BY	DESCRIPTION
1	08/14/18	MWL	RE-ISSUE FOR CONSTRUCTION
0	05/09/18	MWL	ISSUED FOR CONSTRUCTION

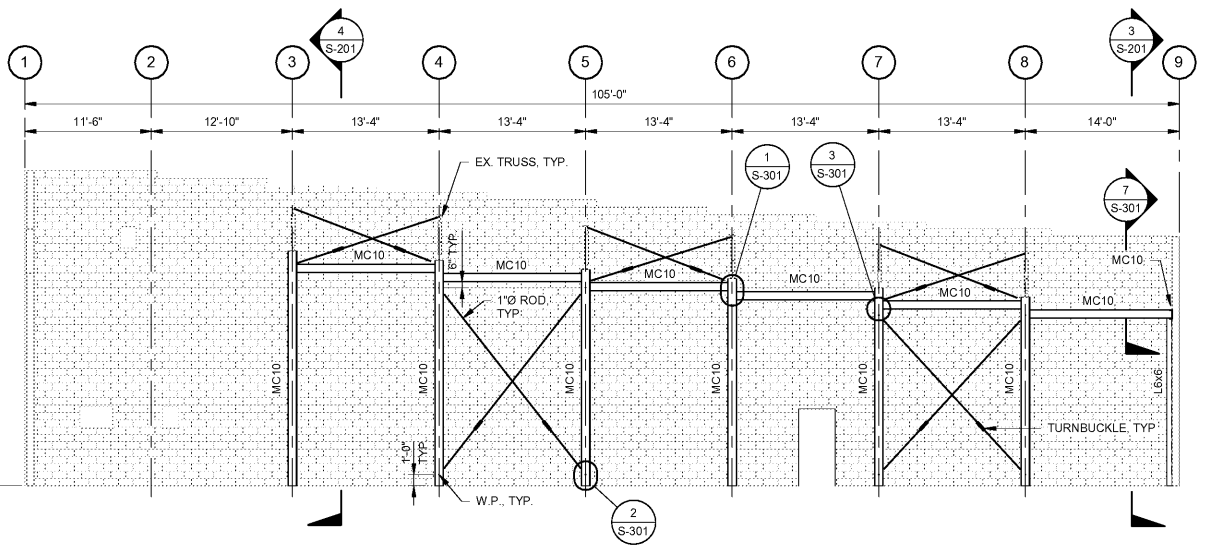
PROJECT NO: 3045.1704
   
 DRAWN BY: CB
   
 CHECKED BY: MWL
   
 DATE: 01/30/18

**ELEVATIONS**

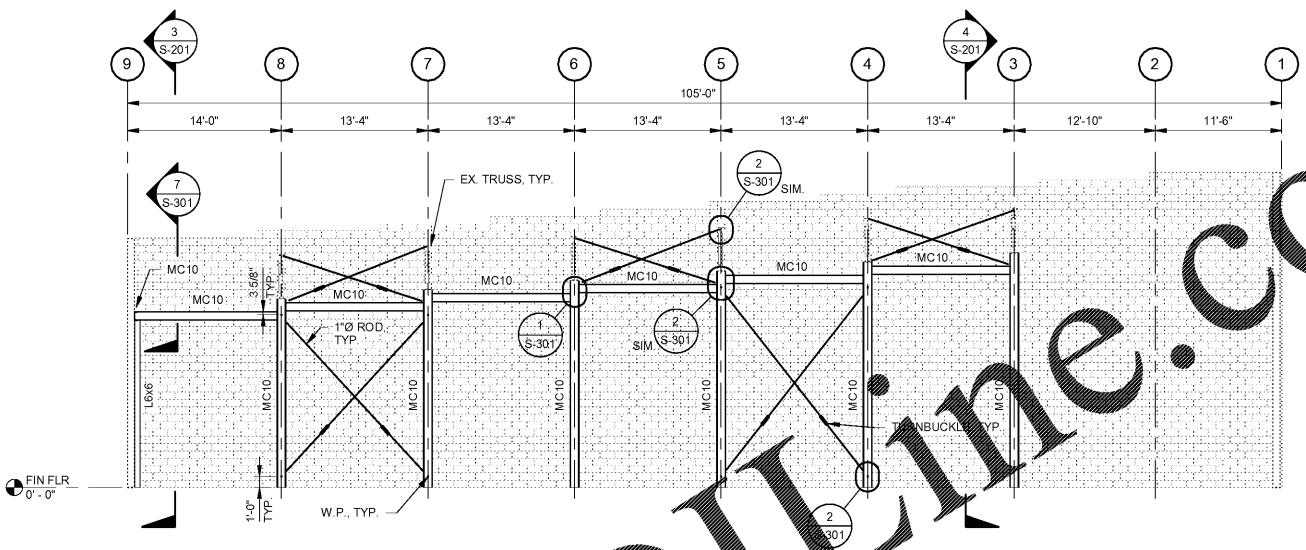
SCALE: AS NOTED

DRAWING NO: **S-201**

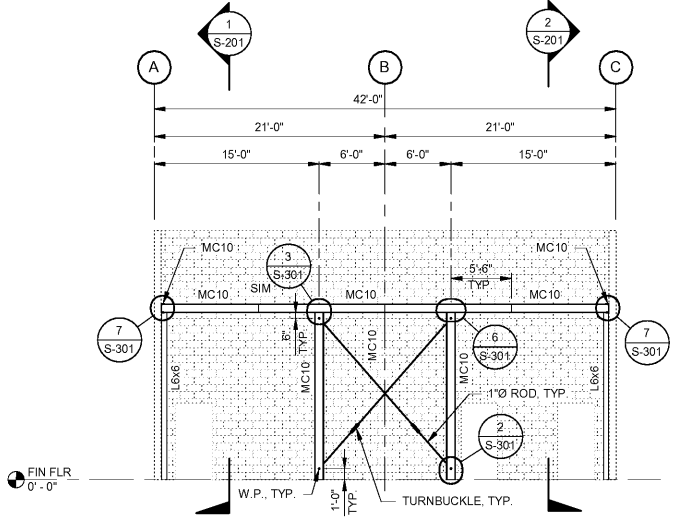
REV: 1



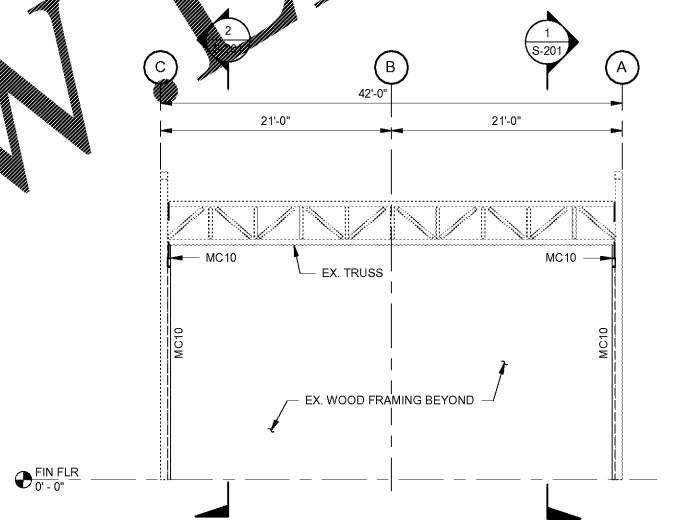
**1 ELEVATION**  
 S-201 SCALE: 1/8" = 1'-0"



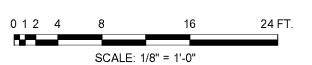
**ELEVATION**  
 S-201 SCALE: 1/8" = 1'-0"



**3 ELEVATION**  
 S-201 SCALE: 1/8" = 1'-0"



**4 ELEVATION**  
 S-201 SCALE: 1/8" = 1'-0"



Order Plans @

WWW.LDLINE.COM