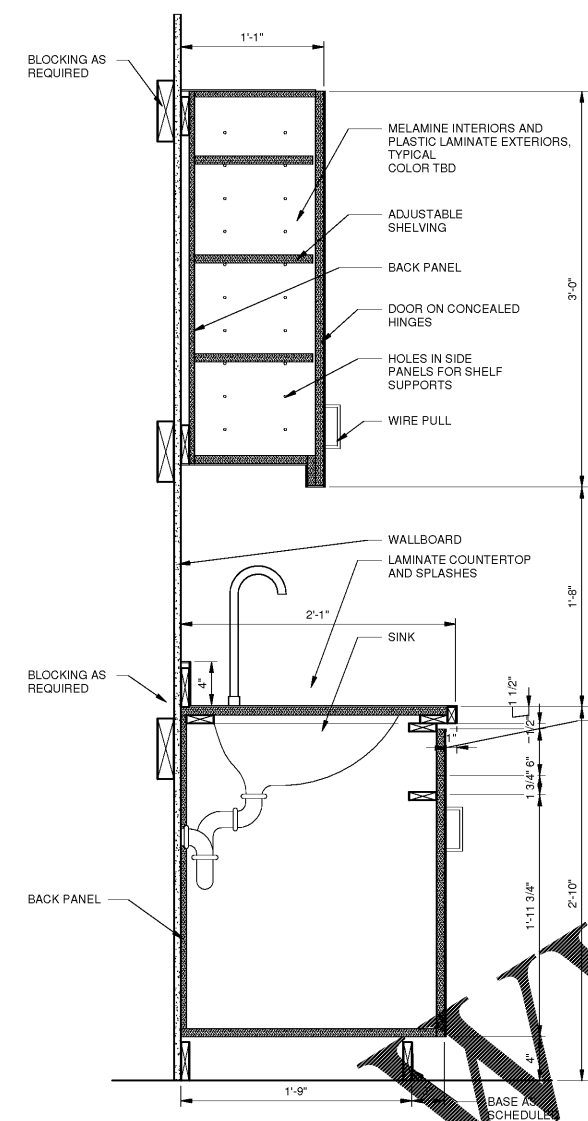
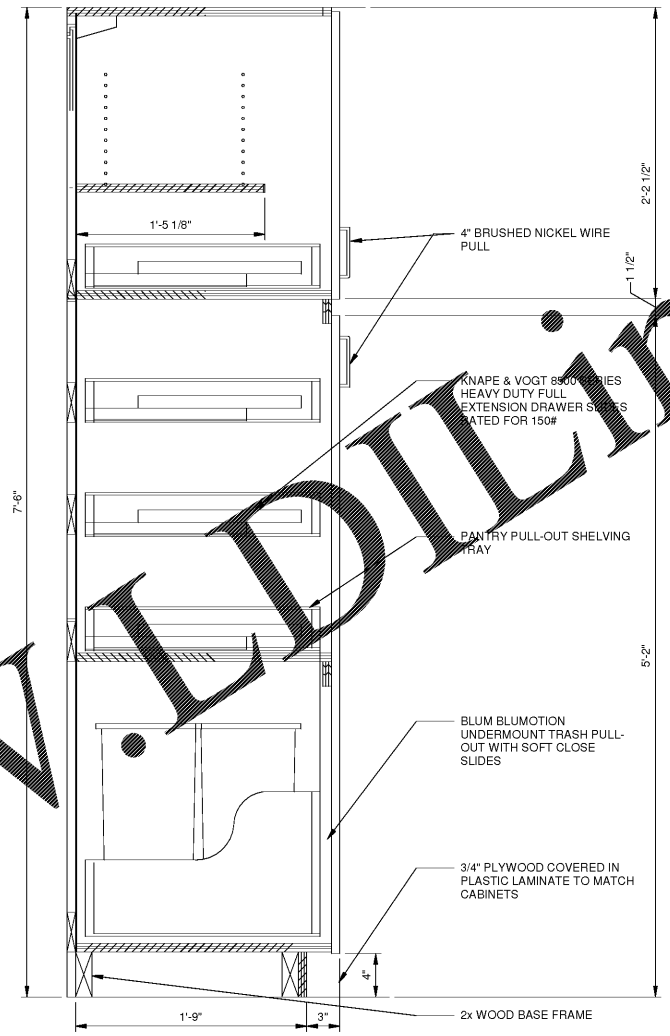


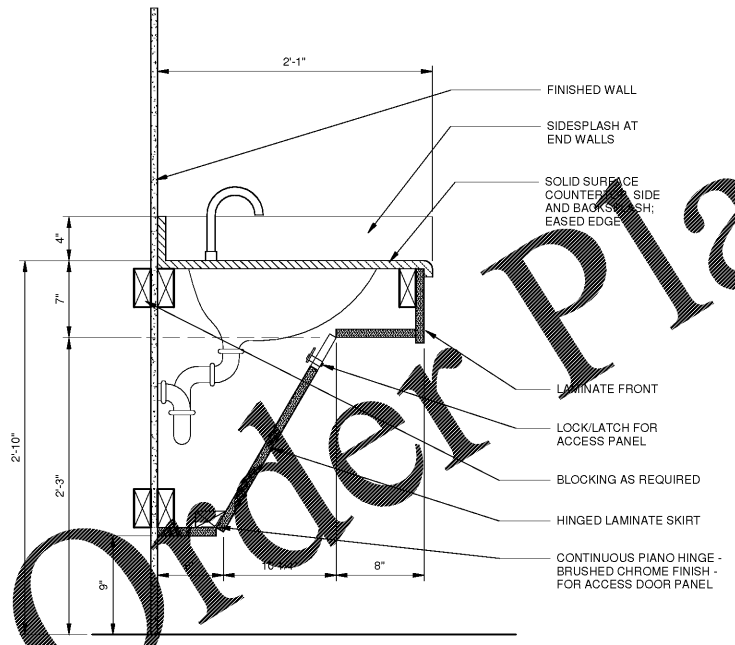
1 CASEWORK SECTION - LAMINATE COUNTERTOP
SCALE: 1 1/2" = 1'-0"



2 TYP CABINET WITH SINK
SCALE: 1 1/2" = 1'-0"



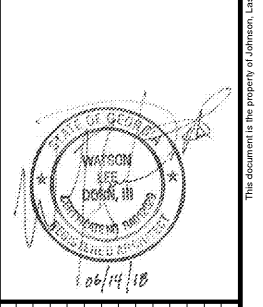
3 CASEWORK DETAIL W/ TRASH PULLOUT
SCALE: 1 1/2" = 1'-0"



4 COUNTER/SINK SECTION
SCALE: 1 1/2" = 1'-0"

1980
Architects • Interiors • Landscape Architects
JOHNSON, LASCHOBER & ASSOCIATES, P.C.
1000 W. GA. • MT. PLEASANT, SC
TEL: (706) 724-9756 • TEL: (843) 619-4656
FAX: (706) 724-3935
WWW.THEJLAGROUP.COM

CLIENT: COLUMBIA COUNTY
4325 EVANS TO LOOKS RD., EVANS, GA 30809
PROJECT NAME: **HARLEM THEATER RENOVATIONS PROJECT**
PROJECT LOCATION: 135 N LOUISVILLE ST., HARLEM, GA 30814



REV	DATE	BY	DESCRIPTION
1	06/14/18	WLD	RE-ISSUE FOR CONSTRUCTION
0	05/09/18	WLD	ISSUE FOR CONSTRUCTION

PROJECT NO. 3045.1704
DRAWN BY: CBW
CHECKED BY: WLD
DATE: 03/26/18

SHEET TITLE:
CASEWORK / CABINET DETAILS

SCALE AS NOTED
DRAWING NO. **A-502** REV. **1**

WWW.LDLINE.COM

Order Plans @