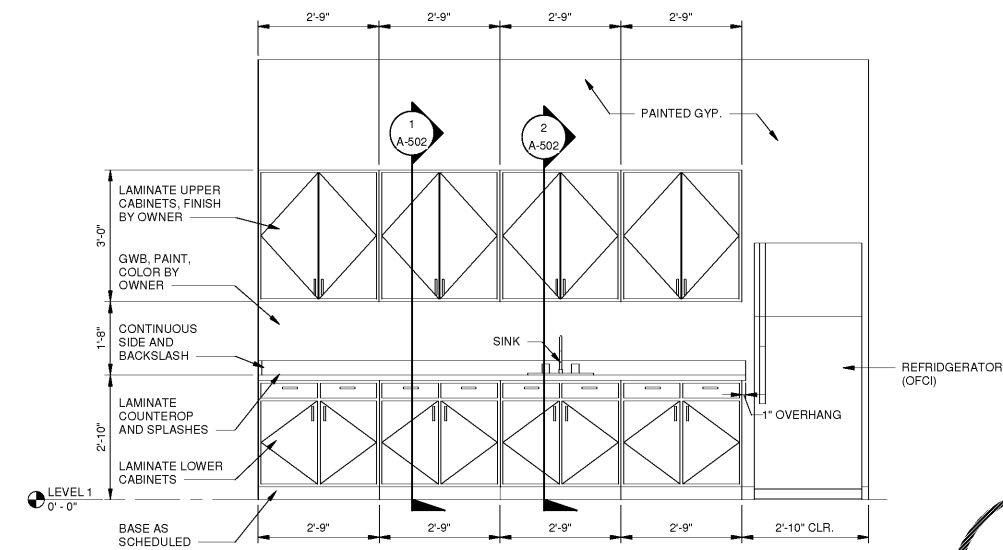
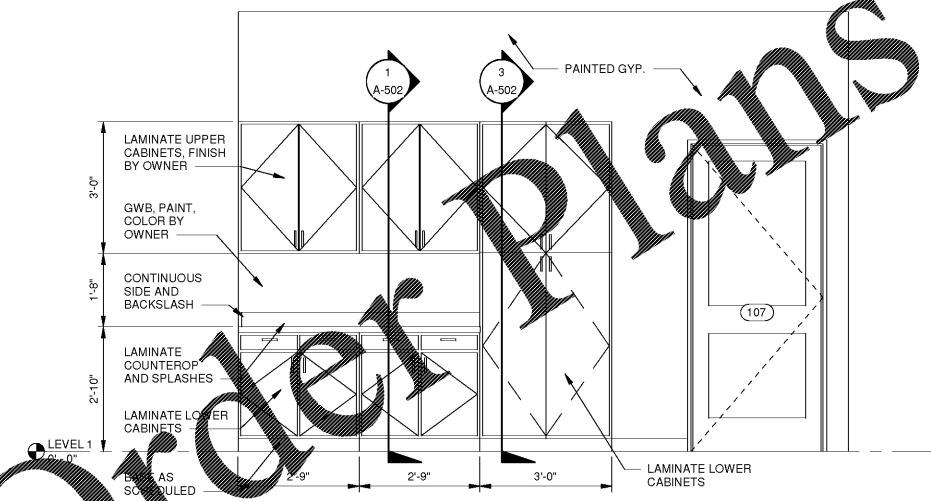


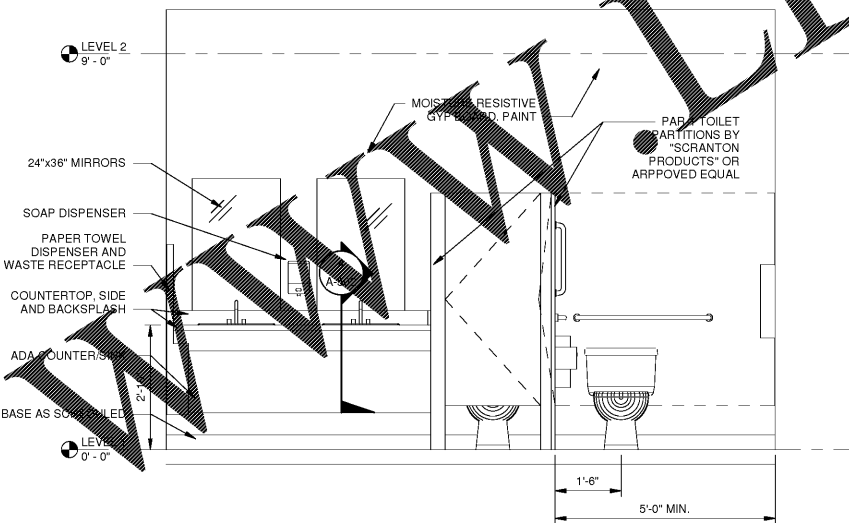
1 BUILDING SECTION
A-501 SCALE: 1/8" = 1'-0"



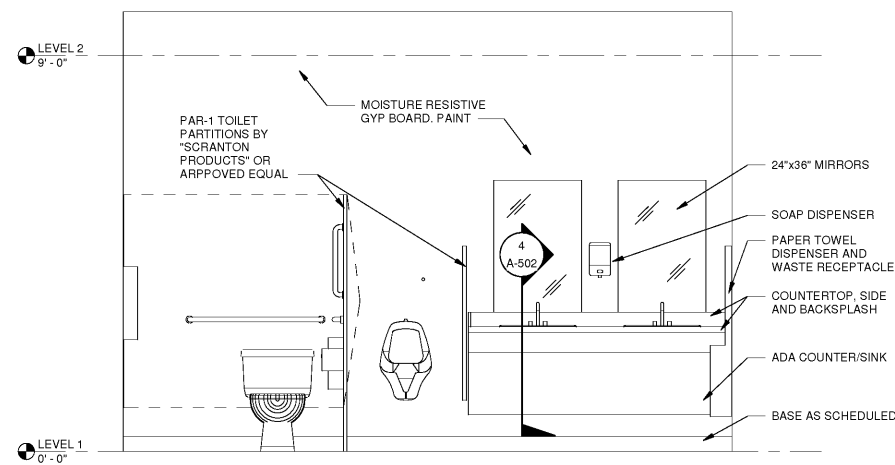
2 BREAK ROOM- NORTH VIEW
A-501 SCALE: 1/2" = 1'-0"



3 BREAK ROOM- SOUTH VIEW
A-501 SCALE: 1/2" = 1'-0"



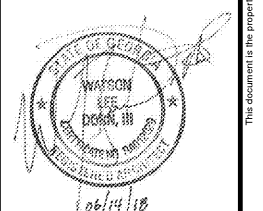
4 WOMEN
A-501 SCALE: 1/2" = 1'-0"



5 MEN
A-501 SCALE: 1/2" = 1'-0"

JL
1980
Architects • Owners • Engineers • Architects
JOHNSON, LASCHNER & ASSOCIATES, P.C.
1000 N. W. 10th St., Ft. Lauderdale, FL 33304
1000 N. W. 10th St., Ft. Lauderdale, FL 33304
Tel: (754) 774-9756 • Tel: (843) 619-4656
Fax: (754) 774-3935
www.thejlagroup.com

CLIENT: COLUMBIA COUNTY
4325 EVANS TO LOOKS RD., EVANS, GA 30809
PROJECT NAME: **HARLEM THEATER RENOVATIONS PROJECT**
PROJECT LOCATION: 135 N LOUISVILLE ST., HARLEM, GA 30814



REV	DATE	BY	DESCRIPTION
1	06/14/18	WLD	RE-ISSUE FOR CONSTRUCTION
0	05/09/18	WLD	ISSUE FOR CONSTRUCTION

PROJECT NO. 3045.1704
DRAWN BY: CBW
CHECKED BY: WLD
DATE: 03/26/18
SHEET TITLE: **BUILDING SECTIONS/ INTERIOR ELEVATIONS**
SCALE: AS NOTED
DRAWING NO. **A-501** REV. **1**

Order Plans @

www.WLDLine.com