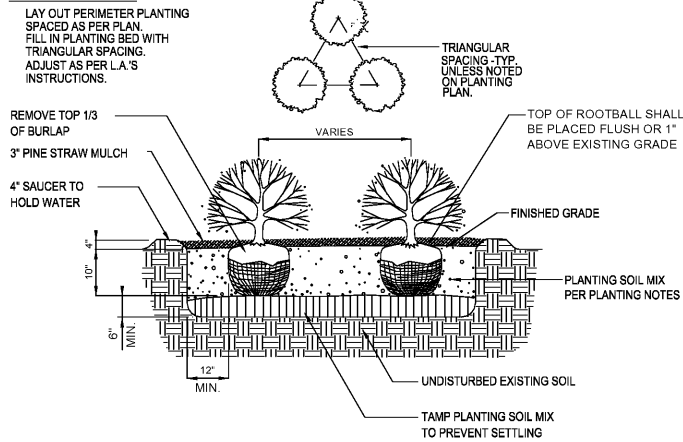


C.C.W.U. STANDARD NOTES

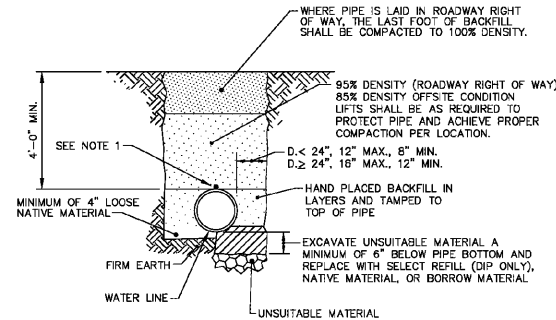
- ALL WATER AND SANITARY SEWER CONSTRUCTION SHALL BE IN ACCORDANCE WITH THE CURRENT COLUMBIA COUNTY WATER UTILITY CONSTRUCTION STANDARDS AND SPECIFICATIONS.
- ALL CONTRACTORS INSTALLING WATER AND SANITARY SEWER UTILITIES SHALL BE RESPONSIBLE FOR OBTAINING A CURRENT COPY OF THE COLUMBIA COUNTY WATER UTILITY CONSTRUCTION STANDARDS AND SPECIFICATIONS. EACH SUPERINTENDENT OR FOREMAN SHALL HAVE A SET ON SITE AT ALL TIMES.
- "CALL BEFORE YOU DIG" NOTE AND PHONE NUMBER.
- THE CONTRACTOR IS RESPONSIBLE FOR CONTACTING THE COLUMBIA COUNTY WATER UTILITY MAINTENANCE OFFICE TO REQUEST LOCATES FOR ALL UNDERGROUND SANITARY SEWER FACILITIES. THE CONTACT NUMBER IS 706-863-6928.
- THE CONTRACTOR IS RESPONSIBLE FOR MAKING ALL WATER/SEWER SERVICE TAPS DURING CONSTRUCTION OR ADDED FOR THE DEVELOPMENT. THE CONTRACTOR IS RESPONSIBLE FOR THE REMOVAL OF EXISTING SERVICE TAPS NOT TO BE USED FOR THE DEVELOPMENT OR UPGRADES REQUIRED TO THE EXISTING WATER OR SEWER SERVICES THAT WILL BE USED FOR THE PROPOSED DEVELOPMENT.
- COUNTY HYDRANTS SHALL BE RED AND PRIVATE HYDRANTS SHALL BE SILVER. HYDRANTS SHALL COME FROM THE FACTORY THE APPROPRIATE COLOR.
- CONTRACTOR TO CONTACT HARLEM PUBLIC WORKS DEPARTMENT 48 HOURS PRIOR TO CONDUCTING WORK ON EXISTING UTILITIES.

TYPICAL BED LAYOUT:



SHRUB AND GROUNDCOVER PLANTING DETAIL

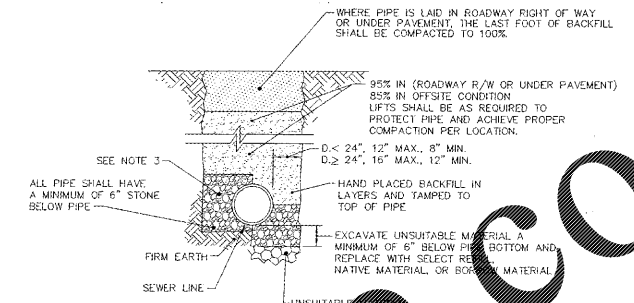
NOT TO SCALE



- NOTE:
- ALL PVC PIPE INSTALLATIONS REQUIRE 12 GAUGE LOCATING WIRE AND IDENTIFICATION TAPE FOR UNDERGROUND UTILITY LINE. ALL BEGINNING AND ENDING OF WATER LINES THAT ARE DIP (FOR A PORTION) IN A CASING OR NOT SHALL HAVE CONTINUOUS LOCATING WIRE FROM VALVE TO VALVE OR VALVE TO HYDRANT.
 - ALL COMPACTION DENSITIES SHALL BE IN ACCORDANCE WITH ASTM D698, STANDARD PROCTOR.

TYPICAL WATER LINE TRENCH EXCAVATION DETAIL

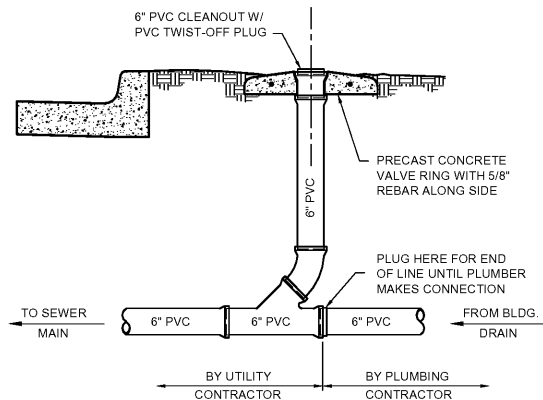
NO SCALE



- NOTE:
- ALL COMPACTION PERCENTAGE (% DENSITY) SHALL BE IN ACCORDANCE WITH ASTM D698, STANDARD PROCTOR.
 - ALL PIPE LESS THAN 12\"/>

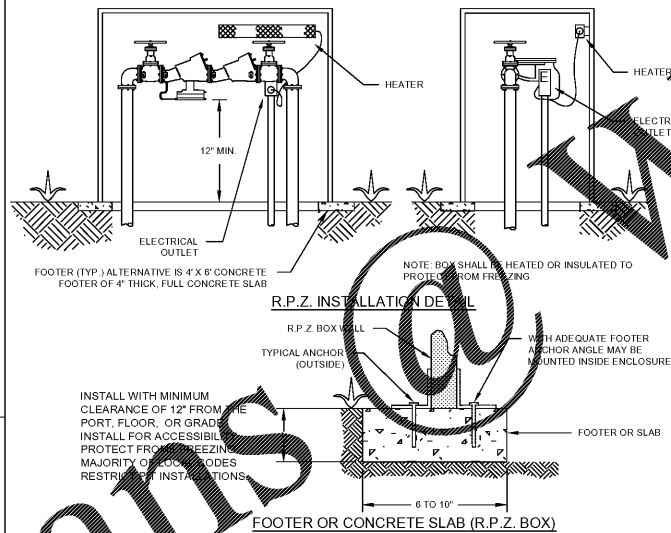
TYPICAL GRAVITY SANITARY SEWER LINE TRENCH EXCAVATION DETAIL

NO SCALE



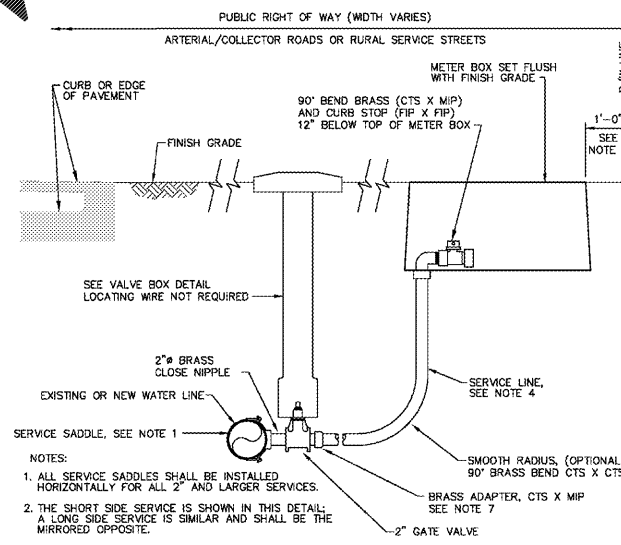
SEWER CLEANOUT DETAIL

NO SCALE



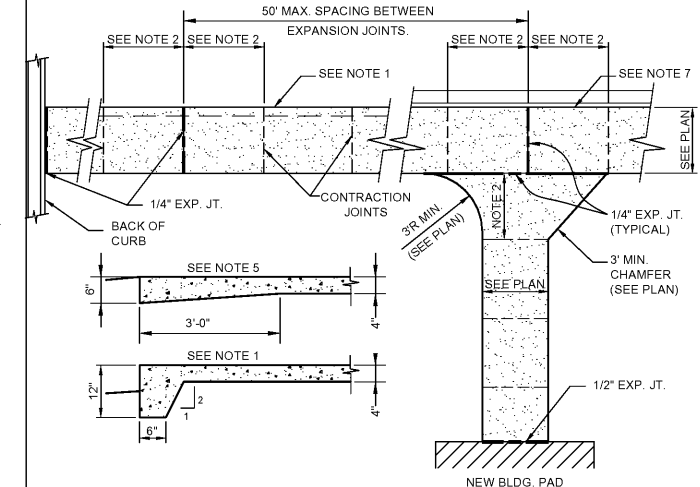
REDUCED PRESSURE ZONE (RPZ) ASSEMBLY INSTALLATION

NO SCALE



TYPICAL 1 1/2\"/>

NO SCALE



STANDARD JOINT LAYOUT FOR CONCRETE SIDEWALK

NO SCALE

C1
C-102

C2
C-102

C3
C-102

C4
C-102

B1
C-102

A2
C-102

C3
C-102

A4
C-102



Call before you dig.
THREE WORKING DAYS BEFORE YOU DIG
(GEORGIA 811-282-282)

UTILITY WARNING:
The underground utilities shown have been located from field survey information and existing drawings. The engineer makes no guarantee that the underground utilities shown comprise all such utilities in the area. The service or abandoned. The engineer further does not warrant that the underground utilities shown are in the exact location indicated although he does certify that they are located as accurately as possible from information available. The engineer has not physically located the underground utilities.



COLUMBIA COUNTY
CONSTRUCTION AND FACILITIES MANAGEMENT

**HARLEM THEATRE
RENOVATION PROJECT**

PROJECT LOCATION:
THEATRE COLUMBIA - 135 N LOUISVILLE ST., HARLEM, GA 30814



REV	DATE	BY	DESCRIPTION
1	06/14/18	JDP	RE-ISSUE FOR CONSTRUCTION
0	05/09/18	JDP	ISSUED FOR CONSTRUCTION

PROJECT NO. 3045.1704
DRAWN BY: JDP
CHECKED BY: TAW
DATE: 01/16/18

**MISCELLANEOUS
DETAILS**

SCALE: 1" = 20'
DRAWING NO. **C-102**
REV. **1**

This document is the property of Johnson, Laschob & Associates, P.C. The unauthorized reproduction, copying or otherwise use of this document is strictly prohibited and any infringement thereupon may be subject to legal action.