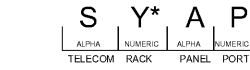


LABELING SCHEME

WORK AREA FACEPLATE LABELING

THE TYPE (VOICE, DATA) AND THE COLOR OF THE ICONS FOR EACH OUTLET ON THE WORK AREA FACEPLATE MUST DIRECTLY CORRESPOND WITH THE ICON ON THE PATCH PANELS. EVERY UTP CABLE PRESENT AT EACH FACEPLATE MUST HAVE ITS OWN UNIQUE IDENTIFIER (LABEL). LABELS SHALL BE BLACK LETTERING ON WHITE BACKGROUND. HAND WRITTEN LABELS ARE NOT ACCEPTABLE.

EACH FACEPLATE LOCATION SHALL BE LABELED WITH THE FOLLOWING INFORMATION FOR EACH UTP CABLE:



EXAMPLE:
B1A05

TELECOMMUNICATIONS SPACE B, RACK 01, PATCH PANEL A, PORT 05

- S = IDENTIFIES THE TELECOMMUNICATIONS SPACE (ALPHA CHARACTER)
- Y* = IDENTIFIES THE RACK NUMBER WITHIN THE TELECOMMUNICATIONS SPACE (NUMERIC CHARACTER)
- A = IDENTIFIES THE PATCH PANEL LOCATION STARTING FROM THE TOP OF THE RACK/CABINET (ALPHA CHARACTER)
- P = IDENTIFIES THE PORT ON THE PATCH PANEL (NUMERIC CHARACTER)

* USED WHEN MORE THAN ONE RACK IS USED FOR THE HORIZONTAL CABLE TERMINATIONS IN A TELECOMMUNICATIONS SPACE

PATCH PANEL LABELING

THE TYPE (VOICE, DATA) AND THE COLOR OF THE ICONS FOR EACH OUTLET ON THE PATCH PANELS MUST DIRECTLY CORRESPOND WITH THE ICON ON THE WORK AREA FACEPLATE. EACH PATCH PANEL SHALL BE LABELED IN THREE LOCATIONS - LEFT SIDE MIDDLE, MIDDLE AND RIGHT SIDE MIDDLE, STARTING WITH THE TOP PATCH PANEL. LABELS SHALL BE BLACK LETTERING ON WHITE BACKGROUND. HAND WRITTEN LABELS ARE NOT ACCEPTABLE.

EACH PATCH PANEL SHALL BE LABELED WITH THE FOLLOWING INFORMATION:

- A = IDENTIFIES THE PATCH PANEL LOCATION STARTING FROM THE TOP OF THE RACK/CABINET

NOTE: NO NEED TO LABEL PORTS ON THE PATCH PANEL

HORIZONTAL CABLE LABELING

ALL HORIZONTAL CABLES MUST BE LABELED WITH ITS OWN UNIQUE IDENTIFIER. LABELS SHALL BE BLACK LETTERING ON WHITE BACKGROUND CONTAINING THE CABLE IDENTIFIER. THE LABELS SHALL BE PLACED ON THE CABLE 4-INCHES FROM POINT OF JACKET REMOVAL AND IN THE SAME DIRECTION FOR ALL CABLES. HAND WRITTEN LABELS ARE NOT ACCEPTABLE.

EACH HORIZONTAL CABLE LABEL SHALL FOLLOW THE SAME LABELING SCHEME AS THE WORK AREA FACEPLATE LABELING SCHEME.

RACK LABELING

ALL RACKS SHALL BE LABELED AT THE TOP AND BOTTOM OF THE RACK. LABELS SHALL BE BLACK LETTERING ON YELLOW BACKGROUND 24 POINT FONT.

EACH RACK SHALL BE LABELED WITH THE FOLLOWING INFORMATION:

ER OR TR

B = IDENTIFIES AS ER OR TR

S = IDENTIFIES THE TELECOMMUNICATIONS SPACE

R = IDENTIFIES THE RACK IN THE TELECOMMUNICATIONS SPACE

EXAMPLE: ER-E01

INDICATES ER, TELECOMMUNICATIONS SPACE E, RACK 01

FIBER OPTIC BACKBONE CABLE LABELING

ALL FIBER OPTIC BACKBONE CABLES MUST BE LABELED WITH ITS OWN UNIQUE IDENTIFIER. LABELS SHALL BE BLACK LETTERING ON WHITE BACKGROUND CONTAINING THE CABLE IDENTIFIER. THE LABELS SHALL BE PLACED ON THE CABLE JACKET 4-INCHES FROM POINT OF JACKET REMOVAL AND IN THE SAME DIRECTION FOR ALL CABLES. HAND WRITTEN LABELS ARE NOT ACCEPTABLE.

EACH FIBER OPTIC BACKBONE CABLE SHALL BE LABELED WITH THE FOLLOWING INFORMATION:

S1 = IDENTIFIES THE TELECOMMUNICATIONS SPACE (TS) CONTAINING THE TERMINATION

S2 = IDENTIFIES THE REMOTE TELECOMMUNICATIONS SPACE CONTAINING THE OTHER END OF THE TERMINATIONS

N = IDENTIFIES THE TOTAL STRAND COUNT OF THE FIBER OPTIC BACKBONE CABLE

M = IDENTIFIES THE FIBER OPTIC BACKBONE CABLES MULTIMODE

SM = IDENTIFIES THE FIBER OPTIC BACKBONE CABLE AS SINGLEMODE

R = IDENTIFIES FIBER OPTIC BACKBONE REDUNDANCY, PRIMARY OR SECONDARY ROUTE

FIBER BACKBONE ENCLOSURE LABELING

EACH FIBER ENCLOSURE LABEL CARD SHALL BE LABELED WITH THE REMOTE TELECOMMUNICATIONS SPACE AND ROUTE. LABELS SHALL BE BLACK LETTERING ON WHITE BACKGROUND. THE LABELS SHALL BE PLACED ON THE CORRESPONDING LABEL CARD SLOT AND IN THE SAME DIRECTION FOR ALL LABELS. HAND WRITTEN LABELS ARE NOT ACCEPTABLE.

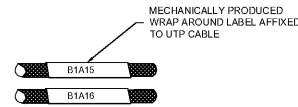
EACH FIBER ENCLOSURE SLOT SHALL BE LABELED WITH THE FOLLOWING INFORMATION:

S2 = IDENTIFIES THE REMOTE TELECOMMUNICATIONS SPACE CONTAINING THE OTHER END OF THE TERMINATIONS

R = IDENTIFIES FIBER OPTIC BACKBONE REDUNDANCY, PRIMARY OR SECONDARY ROUTE

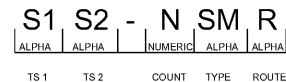
EXAMPLE: TR-AF PRIMARY

INDICATES REMOTE TELECOMMUNICATIONS SPACE TR-AF, PRIMARY PATHWAY



EXAMPLE:
ERE-01

INDICATES ER, TELECOMMUNICATIONS SPACE E, RACK 01

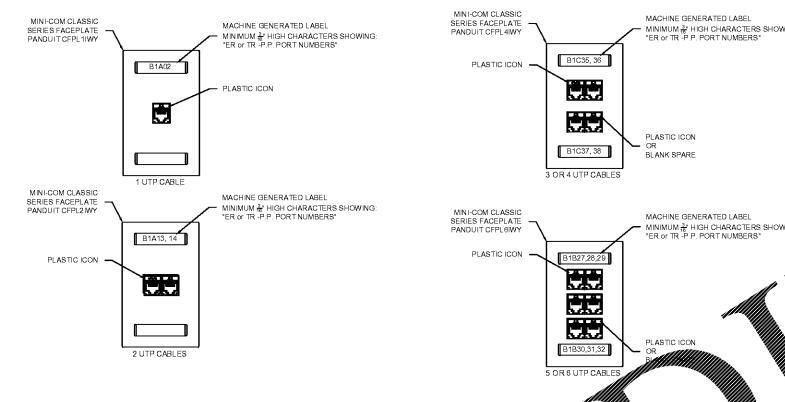


EXAMPLE:

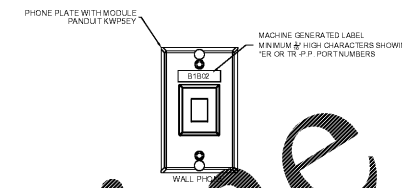
ERE/TRB-12MMP

INDICATES TELECOMMUNICATIONS SPACE AA TO TELECOMMUNICATIONS SPACE AD, 12-STRAND, MULTIMODE, SECONDARY PATHWAY.

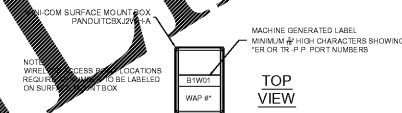
FLUSH MOUNTED FACEPLATES



WALL MOUNT PHONE FACEPLATE



SURFACE MOUNT BOX



COLOR CODE GUIDELINES

THE FOLLOWING COLOR CODE SHALL BE USED TO IDENTIFY COMMONALITY WITHIN THE STRUCTURED CABLE SYSTEM. PROVIDES COLOR CODES FOR OUTLETS, ICONS AND PATCH PANELS BASED ON THE APPLICATIONS BELOW:

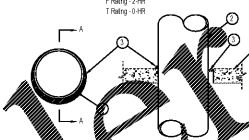
- BLUE - VOICES AND SCENES
- YELLOW - ISP (CONNECTED THROUGH PATCH PANEL)
- ORANGE - SECURITY DEVICES, POS CO-CONTROLLER, & DEMARCATION POINT ANALOG EXTENSIONS
- RED - CATALINA
- VIOLET - ENERGY MANAGEMENT & ISP PERIPHERALS (PRINTERS, PC'S, ASMA, ETC.)
- OFF WHITE - TELEPHONE
- GREEN - PHARMACY WORKSTATION / PRINTER, & DEMARCATION POINT T1 CIRCUIT EXTENSIONS
- BLACK - POS MASTER CONTROLLER
- GRAY - TIME CLOCKS, SCALES, & RISER/TIE CABLES TO TR'S
- WHITE - WIRELESS ACCESS POINTS

1 LABELING DETAIL

SCALE: NTS

METAL PIPE THROUGH CONCRETE FLOORWALL OR BLOCKWALL

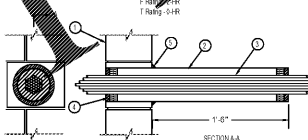
UL/ULC System No. CAJ-1291
Fl Rating: 0-9H



1. Minimum depth of opening = 4" (100mm).
2. Cast-in-place concrete shall be poured in two lifts, each lift not exceeding 12" (300mm).
3. Maximum depth of opening = 12" (300mm).
4. Maximum depth of opening = 12" (300mm).
5. Maximum depth of opening = 12" (300mm).
6. Maximum depth of opening = 12" (300mm).
7. Maximum depth of opening = 12" (300mm).
8. Maximum depth of opening = 12" (300mm).
9. Maximum depth of opening = 12" (300mm).
10. Maximum depth of opening = 12" (300mm).
11. Maximum depth of opening = 12" (300mm).
12. Maximum depth of opening = 12" (300mm).
13. Maximum depth of opening = 12" (300mm).
14. Maximum depth of opening = 12" (300mm).
15. Maximum depth of opening = 12" (300mm).
16. Maximum depth of opening = 12" (300mm).
17. Maximum depth of opening = 12" (300mm).
18. Maximum depth of opening = 12" (300mm).
19. Maximum depth of opening = 12" (300mm).
20. Maximum depth of opening = 12" (300mm).

E-BUNT THROUGH 2-HR. CONCRETE WALL OR BLOCK WALL ASSEMBLY

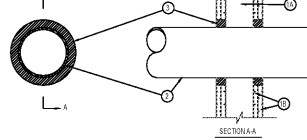
UL/ULC System No. WJ-5000
Fl Rating: 0-9H



1. Minimum depth of opening = 4" (100mm).
2. Cast-in-place concrete shall be poured in two lifts, each lift not exceeding 12" (300mm).
3. Maximum depth of opening = 12" (300mm).
4. Maximum depth of opening = 12" (300mm).
5. Maximum depth of opening = 12" (300mm).
6. Maximum depth of opening = 12" (300mm).
7. Maximum depth of opening = 12" (300mm).
8. Maximum depth of opening = 12" (300mm).
9. Maximum depth of opening = 12" (300mm).
10. Maximum depth of opening = 12" (300mm).
11. Maximum depth of opening = 12" (300mm).
12. Maximum depth of opening = 12" (300mm).
13. Maximum depth of opening = 12" (300mm).
14. Maximum depth of opening = 12" (300mm).
15. Maximum depth of opening = 12" (300mm).
16. Maximum depth of opening = 12" (300mm).
17. Maximum depth of opening = 12" (300mm).
18. Maximum depth of opening = 12" (300mm).
19. Maximum depth of opening = 12" (300mm).
20. Maximum depth of opening = 12" (300mm).

METAL PIPE THROUGH 14-OR 2-HR. GYPSUM WALL ASSEMBLY

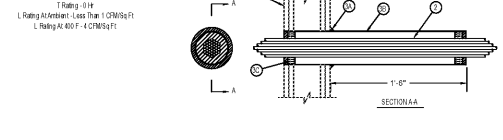
UL/ULC System No. WJ-1054
Fl Rating: 1 and 2 1/2 H
L Rating: A or B; Less than 1.0 CMWt/R
L Rating: A or B; 1.0 CMWt/R



1. Minimum depth of opening = 4" (100mm).
2. Cast-in-place concrete shall be poured in two lifts, each lift not exceeding 12" (300mm).
3. Maximum depth of opening = 12" (300mm).
4. Maximum depth of opening = 12" (300mm).
5. Maximum depth of opening = 12" (300mm).
6. Maximum depth of opening = 12" (300mm).
7. Maximum depth of opening = 12" (300mm).
8. Maximum depth of opening = 12" (300mm).
9. Maximum depth of opening = 12" (300mm).
10. Maximum depth of opening = 12" (300mm).
11. Maximum depth of opening = 12" (300mm).
12. Maximum depth of opening = 12" (300mm).
13. Maximum depth of opening = 12" (300mm).
14. Maximum depth of opening = 12" (300mm).
15. Maximum depth of opening = 12" (300mm).
16. Maximum depth of opening = 12" (300mm).
17. Maximum depth of opening = 12" (300mm).
18. Maximum depth of opening = 12" (300mm).
19. Maximum depth of opening = 12" (300mm).
20. Maximum depth of opening = 12" (300mm).

CABLE BUNDLE THROUGH A SLEEVE IN 1-HR. OR 2-HR. GYPSUM WALL ASSEMBLY

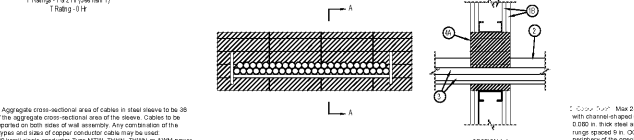
UL/ULC System No. WJ-3112
Fl Rating: 1 and 2 1/2 H
L Rating: A or B; Less than 1.0 CMWt/R
L Rating: A or B; 1.0 CMWt/R



1. Minimum depth of opening = 4" (100mm).
2. Cast-in-place concrete shall be poured in two lifts, each lift not exceeding 12" (300mm).
3. Maximum depth of opening = 12" (300mm).
4. Maximum depth of opening = 12" (300mm).
5. Maximum depth of opening = 12" (300mm).
6. Maximum depth of opening = 12" (300mm).
7. Maximum depth of opening = 12" (300mm).
8. Maximum depth of opening = 12" (300mm).
9. Maximum depth of opening = 12" (300mm).
10. Maximum depth of opening = 12" (300mm).
11. Maximum depth of opening = 12" (300mm).
12. Maximum depth of opening = 12" (300mm).
13. Maximum depth of opening = 12" (300mm).
14. Maximum depth of opening = 12" (300mm).
15. Maximum depth of opening = 12" (300mm).
16. Maximum depth of opening = 12" (300mm).
17. Maximum depth of opening = 12" (300mm).
18. Maximum depth of opening = 12" (300mm).
19. Maximum depth of opening = 12" (300mm).
20. Maximum depth of opening = 12" (300mm).

CABLE TRAY THROUGH 1-HR. OR 2-HR. GYPSUM WALL ASSEMBLY

UL/ULC System No. WJ-4011
Fl Rating: 1 and 2 1/2 H (See Item 1)
L Rating: A or B; Less than 1.0 CMWt/R
L Rating: A or B; 1.0 CMWt/R



1. Minimum depth of opening = 4" (100mm).
2. Cast-in-place concrete shall be poured in two lifts, each lift not exceeding 12" (300mm).
3. Maximum depth of opening = 12" (300mm).
4. Maximum depth of opening = 12" (300mm).
5. Maximum depth of opening = 12" (300mm).
6. Maximum depth of opening = 12" (300mm).
7. Maximum depth of opening = 12" (300mm).
8. Maximum depth of opening = 12" (300mm).
9. Maximum depth of opening = 12" (300mm).
10. Maximum depth of opening = 12" (300mm).
11. Maximum depth of opening = 12" (300mm).
12. Maximum depth of opening = 12" (300mm).
13. Maximum depth of opening = 12" (300mm).
14. Maximum depth of opening = 12" (300mm).
15. Maximum depth of opening = 12" (300mm).
16. Maximum depth of opening = 12" (300mm).
17. Maximum depth of opening = 12" (300mm).
18. Maximum depth of opening = 12" (300mm).
19. Maximum depth of opening = 12" (300mm).
20. Maximum depth of opening = 12" (300mm).

2 FIRE STOP DETAIL

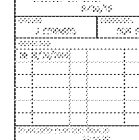
SCALE: NTS

MID-ATLANTIC
(NEW) ARTISAN
INFRASTRUCTURE SOLUTIONS



NEW STORE IFB
R-543
MERCURY BLVD.
HAMPTON, VA.

11/12/2018



104,824.98
LABELING AND FIRE
STOP DETAIL
R-543
T5.1

Order Plans