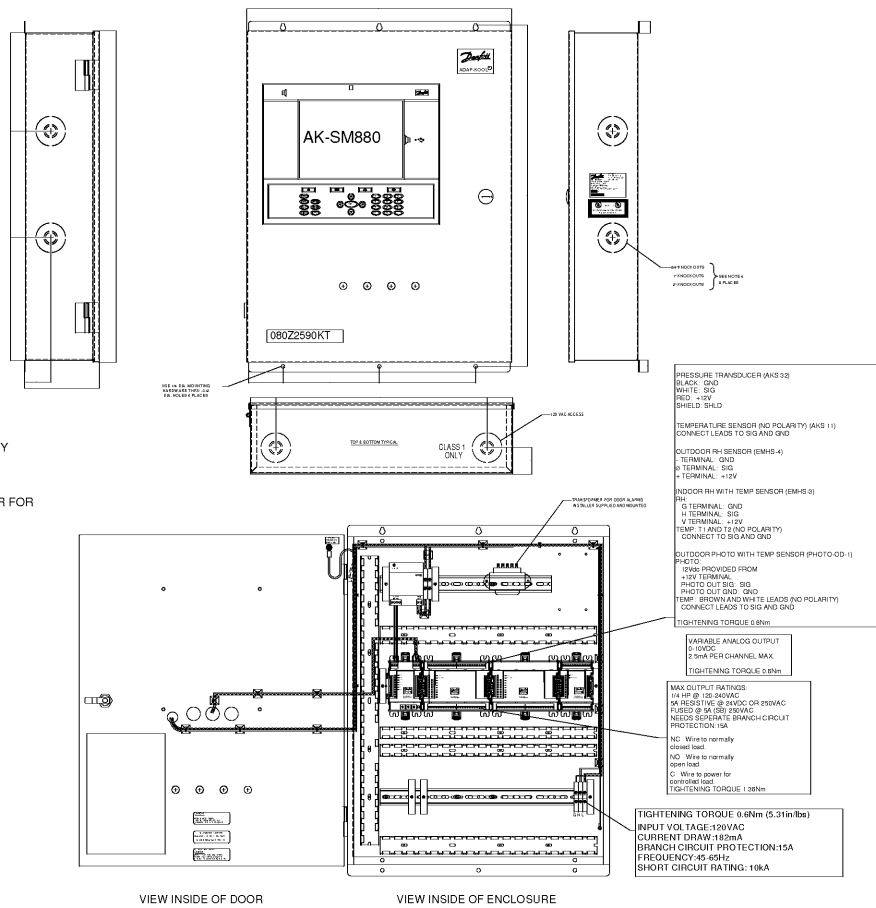


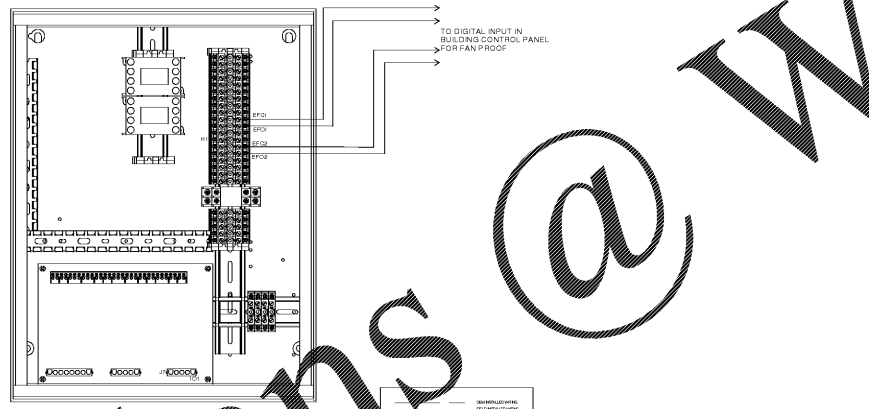
- DANFOSS ENVIRONMENTAL CONTROL PANEL KIT INCLUDES:
- ONE (1) 22" X 28" ENCLOSURE
 - FLUSH MOUNTED SM-880 CONTROLLER
 - FACTORY WIRED & MOUNTED POWER SUPPLY
 - FACTORY WIRED & MOUNTED COMM MODULES
 - ONE (1) LOOSE 8AI/8RO COMBO BOARD
 - ONE (1) LOOSE XM-103A BOARD & POWER SUPPLY
 - ONE (1) LOOSE OUTDOOR WEATHER STATION
 - ONE (1) LOOSE INDOOR TEMP/RH SENSOR
 - ONE (1) LOOSE SAO BOARD
 - ONE (1) INSTALLER SUPPLIED 24V TRANSFORMER FOR RELAY CONTROL



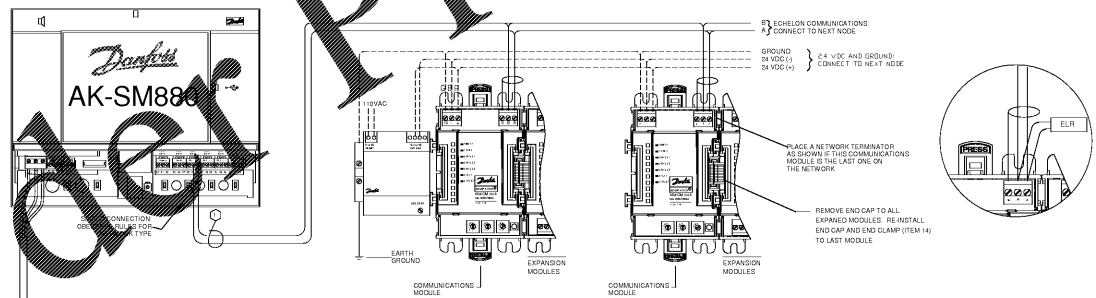
1 CONTROL SYSTEM - DANFOSS ENVIRONMENTAL CONTROL PANEL

SCALE: NONE

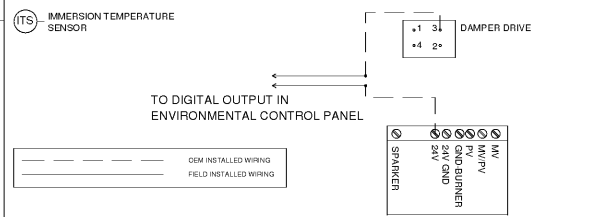
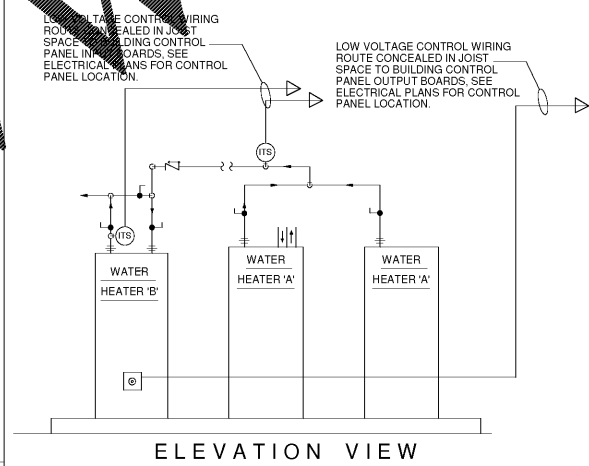
SCALE: NONE



3 CONTROL SYSTEM - EXHAUST HOOD CONTROL PANEL - EMS CONTROL



4 CONTROL SYSTEM - I/O BOARD/LON COMMUNICATION NETWORK - EMS CONTROL



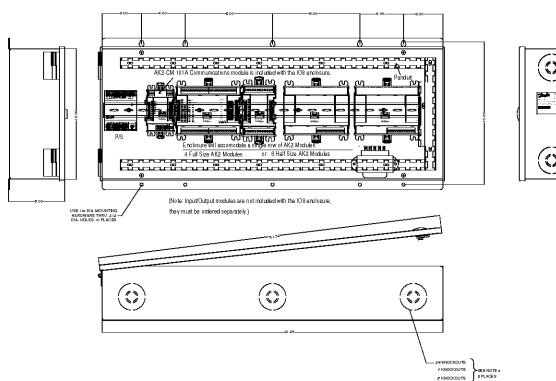
- NOTES:
1. REFER TO PSD-6R FOR TANK AND PLUMBING INFORMATION.
 2. IMMERSION TEMPERATURE SENSOR, DIRECT BUY - KROGER SUPPLIED. INSTALLED BY PLUMBING CONTRACTOR, IN THREADED TEE IN RECLAIM HEATER AND GAS WATER HOT WATER DISCHARGE LINE AS INDICATED. RECLAIM TANK IMMERSION TEMPERATURE SENSOR CONTROLS RECLAIM VALVES ON PROTOCOL UNITS SUPPLYING HEAT RECLAIM. GAS WATER HEATER IMMERSION TEMPERATURE SENSOR CONTROLS RELAY OUTPUT POINT CONTROLLING HEATER OPERATION.
 3. SET WATER HEATERS TO SUPPLY F. WATER, DURING PEAK STORE OPERATION. SET BACK TO 100°F. UPON COMPLETION OF PREP AREA WASH/DOWN. FDA FOOD CODE 2009 STATES THAT WATER MUST BE A MINIMUM 100°F. AT POINT OF DELIVERY.
 4. SPLICE LOW VOLTAGE CONTROL WIRE INTO 24V LINE FROM THE IGNITION CONTROL MODULE TO THE DAMPER DRIVE AND WIRE TO BUILDING CONTROL PANEL RELAY OUTPUT POINT. RELAY OUTPUT WILL BE CONTROLLED BY IMMERSION TEMP SENSOR TO TURN HEATER ON/OFF.

5 CONTROL SYSTEM - DOOR ALARM

SCALE: NONE

6 LED SITE LIGHTING PANEL (IF REQUIRED)

2" REFERENCE LINE



- NOTE:
1. INSTALL ENCLOSURE ON A VIBRATION FREE SURFACE. MARK HOLE LOCATIONS. USE APPROPRIATE HARDWARE FOR MOUNTING TO STRUCTURE.
 2. FOLLOW ALL NATIONAL AND LOCAL ELECTRICAL CODES WHEN INSTALLING.
 3. WHEN INSERTING WIRING, BE SURE HIGH AND LOW VOLTAGE ARE KEPT SEPARATED.
 4. ALL REMOVED KNOCKOUTS MUST HAVE CONDUIT FITTINGS INSTALLED.

- LED SITE LIGHTING PANEL:
- ONE (1) ENCLOSURE (OWNER SUPPLIED)
 - DANFOSS POWER SUPPLY (OEM MOUNTED)
 - DANFOSS COMM MODULE (OEM MOUNTED)
 - ONE (1) 8AI/8RO COMBO BOARD (INSTALLER MOUNTED)
 - ONE (1) 103A BOARD (INSTALLER MOUNTED)
 - TWO (2) DIMMER BOARD (INSTALLER MOUNTED)
 - ONE (1) 24V TRANSFORMER FOR RELAY CONTROL (INSTALLER MOUNTED)

CR architecture + design

creating extraordinary places
www.cr-architects.com
800-460-4949

CONSULTANTS

MECHANICAL/ELECTRICAL ENGINEERS

WWW.KUHENRICH.COM

LEWISTON, KENTUCKY
LOUISVILLE, KENTUCKY
NEW YORK, NEW YORK

155A ALEXANDRIA PIKE, SUITE 11
FT. THOMAS, KENTUCKY 40319
858-442-8286 FAX

OWNER

Kroger

DATE: ISSUE
11/23/2018 80% OWNER REVIEW
11/01/2018 100% BID/PERMIT

DATE	REVISION

PROJECT TITLE
KROGER STORE
R543

MERCURY BLVD.
HAMPTON, VA

CONTRACT NO. 517315
ISSUE DATE 10/23/2018
SHEET TITLE
ELECTRICAL
ENERGY
MANAGEMENT
SCHEDULES AND
DETAILS

SHEET NO.
EM1.3.5

OWNERSHIP OF INSTRUMENTS OF SERVICE
 All records, plans, specifications, drawings, and instruments prepared by the Consultant are instruments of service and shall remain the property of the Consultant. No copies shall be made or used for any other project without the written consent of the Consultant. The copyright in these drawings is reserved by the Consultant. 11/17/2018 11:28:17 AM

WWW.LDILine.com
 @