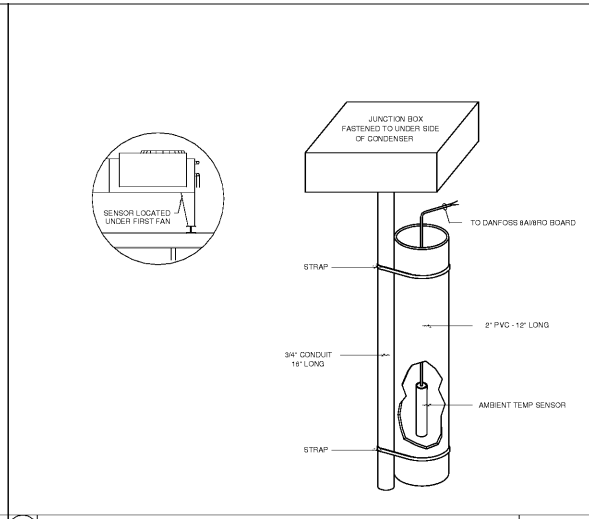
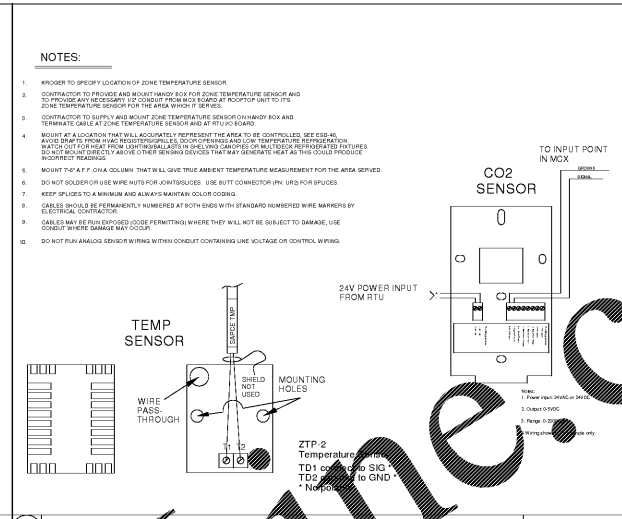


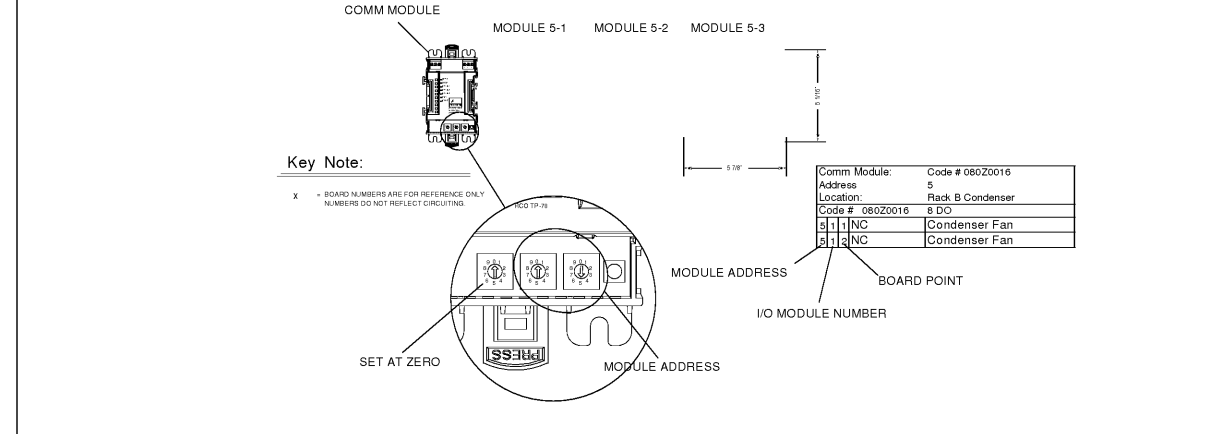
2 CONTROL SYSTEM - SUPPLY AIR WIRING & MOUNTING SCALE: NONE



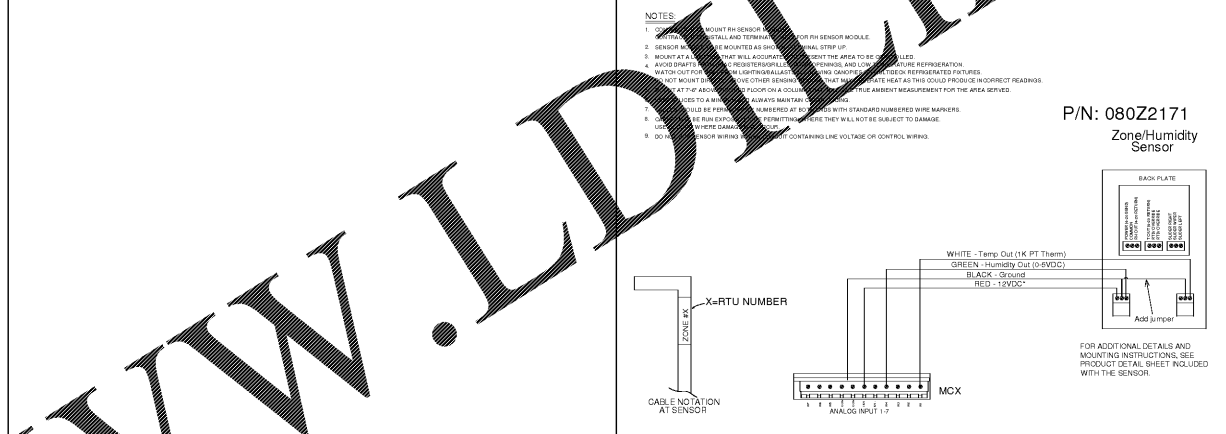
3 AIR-COOLED CONDENSER AMBIENT TEMP SENSOR DETAIL SCALE: NONE



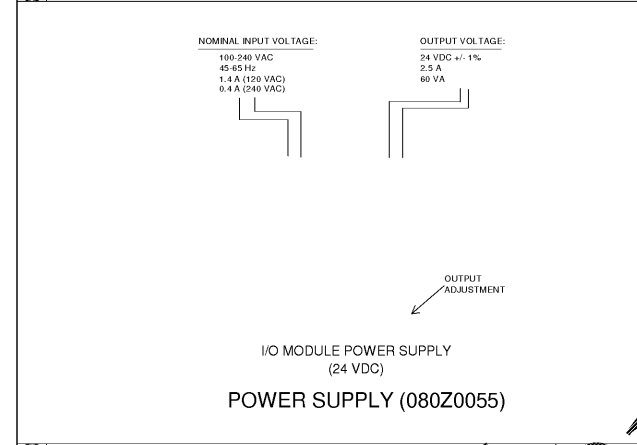
4 SPACE TEMPERATURE & CO2 SENSOR TERMINATION SCALE: NONE



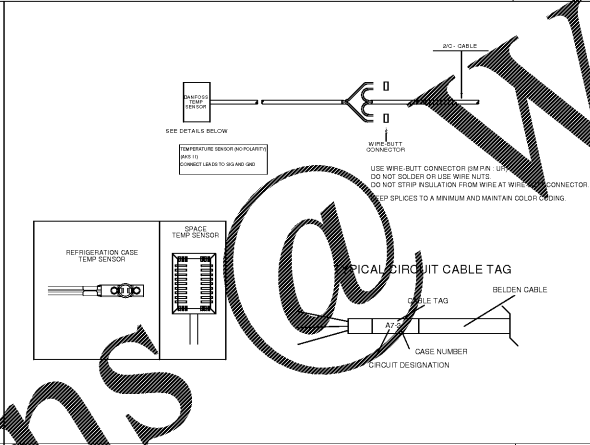
5 KEY AND COMM MODULE SETTINGS SCALE: NONE



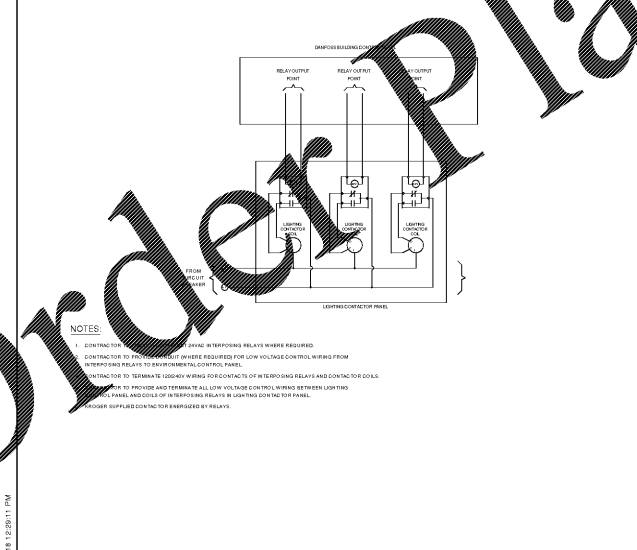
7 CONTROL SYSTEM - RH SENSOR TERMINATION SCALE: NONE



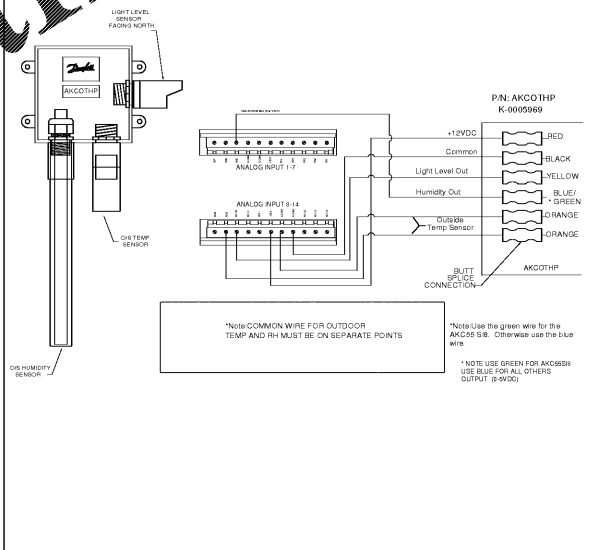
8 I/O BOARD CONTROL SYSTEM - POWER SUPPLY WIRING SCALE: NONE



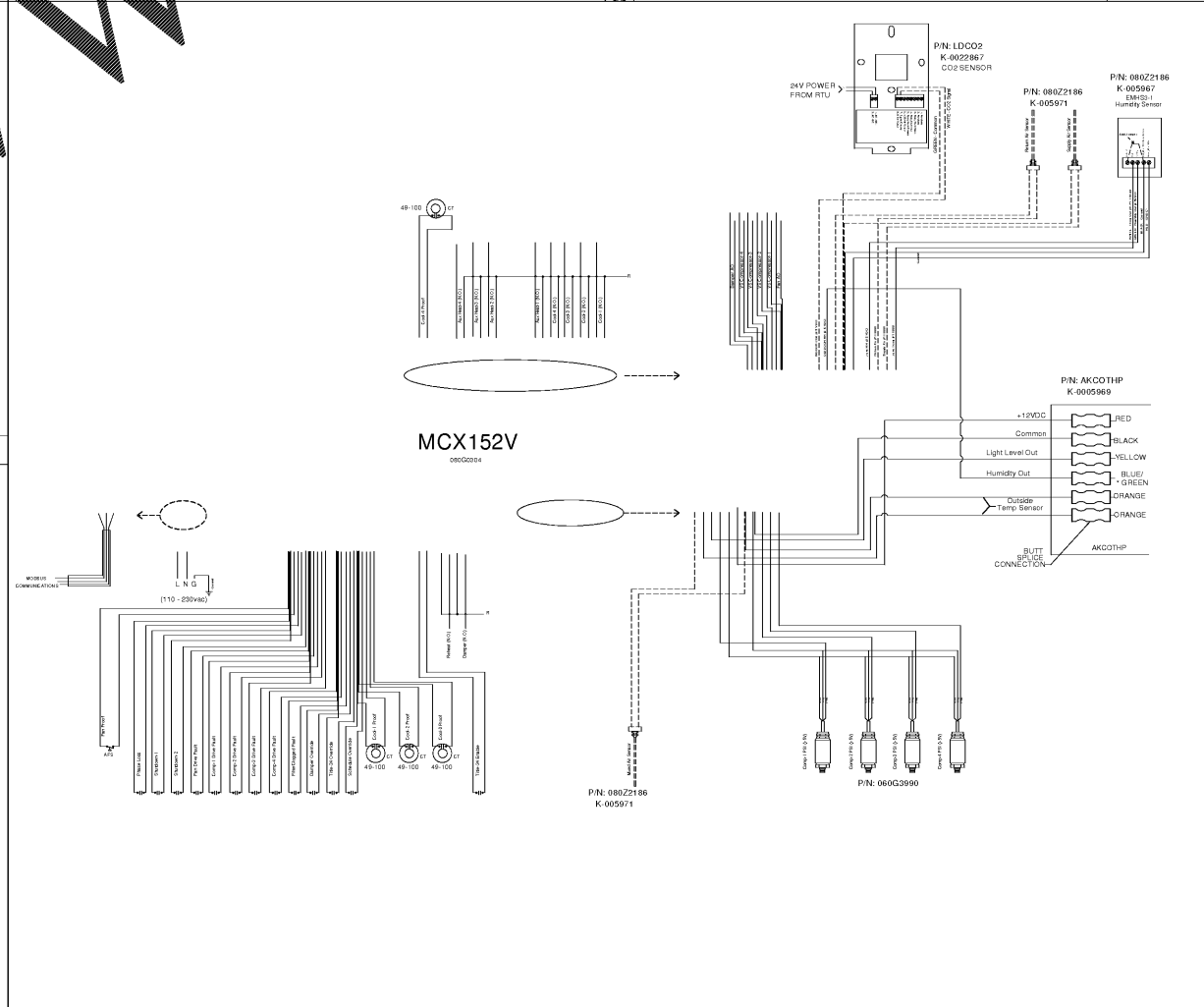
9 WIRE STAGING IN REFRIGERATED AREAS SCALE: NONE



10 CONTROL SYSTEM - LIGHTING CONTROL SCALE: NONE



11 LIGHT SENSOR/OUTDOOR TEMP & HUMIDITY SENSOR SCALE: NONE



12 CONTROL SYSTEM - MCX HVAC CONTROLLER SCALE: NONE

CR architecture + design

creating extraordinary places
www.cr-arch.com
800-460-4949

CONSULTANTS

BEKLH ENGINEERS
MECHANICAL/ELECTRICAL ENGINEERS
WWW.KUHENGENS.COM
LEWISVILLE, OHIO
NEW YORK, NEW YORK

OWNER
Kroger

DATE: 10/23/2018
15% OWNER REVIEW
11/01/2018 15% BID PERMIT

PROJECT TITLE
KROGER STORE R543

MERCURY BLVD.
HAMPTON, VA

COORDINATING: 517315
ISSUE DATE: 10/23/2018
SHEET TITLE
ELECTRICAL ENERGY MANAGEMENT SCHEDULES AND DETAILS

SHEET NO.
EM1.3.4

ORDER PLANS @ WWW.LDMLINE.COM

OWNERSHIP OF INSTRUMENTS OF SERVICE
 The undersigned hereby certifies that the drawings and information provided by the Consultant are instruments of service for the project described herein. The Consultant, its successors and assigns shall retain all rights in these instruments of service. No part of these instruments of service may be reproduced, stored in a retrieval system, or transmitted in any form or by any means, electronic, mechanical, photocopying, recording, or by any information storage and retrieval system, without the prior written permission of the Consultant. The copyright in these instruments of service shall remain the property of the Consultant.