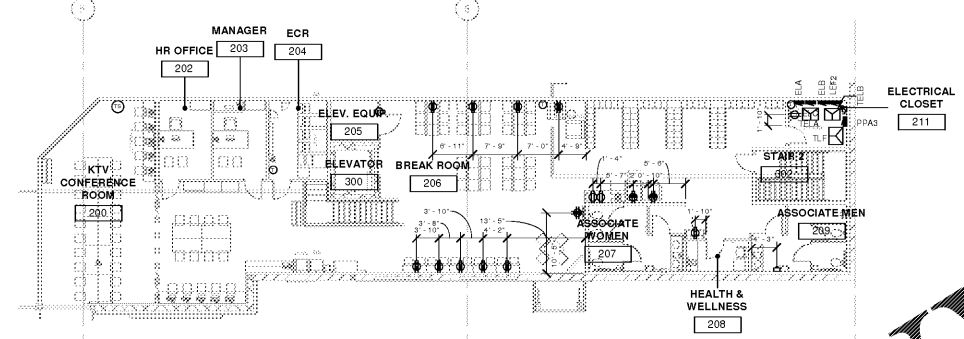
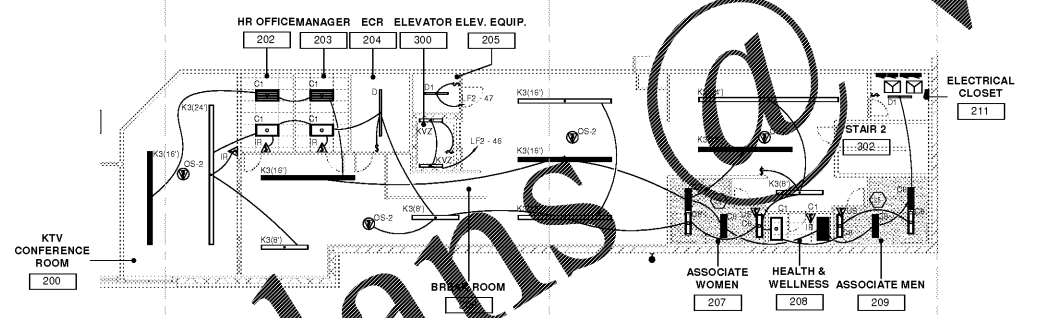


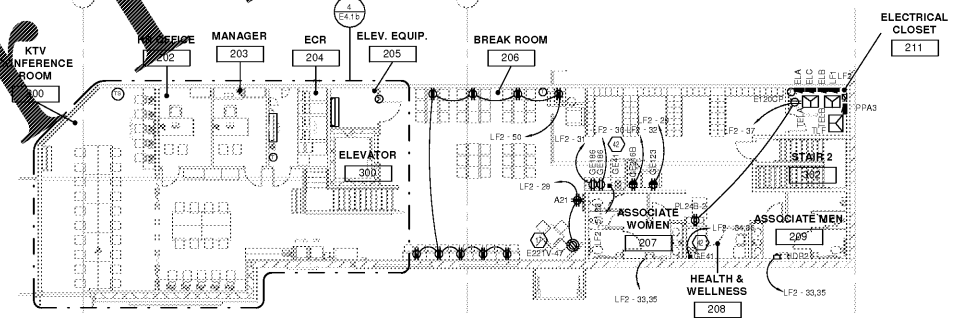
5 ELECTRICAL MEZZANINE LIGHTING DIMENSION PLANS
3/32" = 1'-0"



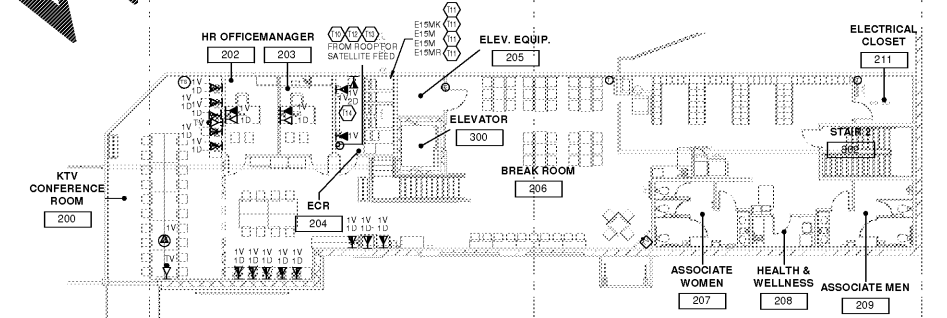
6 ELECTRICAL MEZZANINE POWER DIMENSION PLANS
3/32" = 1'-0"



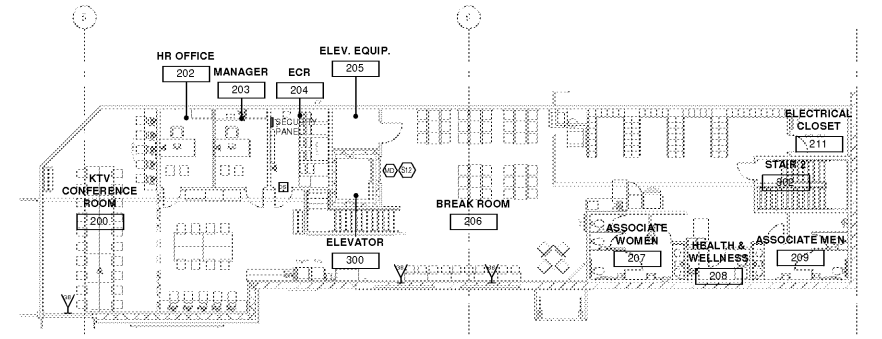
5 ELECTRICAL LIGHTING MEZZANINE PLANS
3/32" = 1'-0"



7 ELECTRICAL POWER MEZZANINE PLANS
3/32" = 1'-0"



2 PHONE DATA SPECIALTY MEZZANINE
3/32" = 1'-0"



1 SECURITY MEZZANINE PLANS
3/32" = 1'-0"

- KEYED NOTES**
- 17 REC SHALL PROVIDE RECEPTACLE FOR OVERHEAD TELEVISION MONITOR. FIELD VERIFY LOCATION AND INSTALLATION SPECIFICS.
 - 42 REC SHALL PROVIDE JUNCTION BOX, CONDUIT, AND WIRE FOR PLUGMOLD. REC SHALL PROVIDE PLUGMOLD (WIREMOLD #2000 SERIES, 2-CIRCUIT, WITH 'GB' SERIES SINGLE RECEPTACLES ON 1" CENTER). REC TO INSTALL RECESSED SINGLE GANG WALL BOX TURNED HORIZONTALLY. USE SINGLE GANG W/48 ADAPTER BOX FOR CONNECTION TO PLUGMOLD. COORDINATE WITH DEC. PAINT PLUGMOLD TO MATCH WALL. PROVIDE PLUGMOLD TO BE A LENGTH OF ASSOCIATED FURNITURE.
 - 43 SEE DETAIL ESD-25 ON ES-SERIES DRAWINGS FOR LIGHTING CONTROL DIAGRAM. NOT ALL LIGHTING CIRCUITS ROUTED THROUGH LIGHTING CONTACTOR. SEE EM DRAWINGS FOR DETAILS.
 - 512 PROVIDE SECURITY SYSTEM MONITORING DEVICE FOR EQUIPMENT SHOWN PER SPEC SECTION 28 31 00. FIELD VERIFY EXACT LOCATION.
 - T10 PROVIDE 8" X 4" X 3/4" D PLYWOOD EQUIPMENT TELEPHONE TERMINAL BOARD (EFTTB) PER SPECS. STUB (2 1/2" EMPTY CONDUITS TO OVERHEAD JOIST SPACE. PROVIDE 1 1/4" EMPTY CONDUIT FROM ECR ROOM TELEPHONE TERMINAL BOARD TO TELEPHONE TERMINAL BOARD IN REAR OF STORE. ROUTED OVERHEAD. ALSO PROVIDE (1) 1/2" EMPTY CONDUIT FROM TELEPHONE TERMINAL BOARD, ROUTED OVERHEAD, AND TERMINATED IN BAR JOIST SPACE IN BACK ROOM NEAR DOCK RECEIVING DESK FOR SECURITY WIRING. FIELD VERIFY SPECIFICS FOR ALL LOCATIONS AND TERMINATION REQUIREMENTS FOR ALL OF THE ABOVE.
 - T11 MDF DATA RACK - STUB (2) 3" CONDUITS TO OVERHEAD JOIST SPACE.
 - T12 OUTSIDE PHONE LINE (48" AFF).
 - T13 PROVIDE J.B. AT 4' AFF FOR TERMINATION OF SCALE CONDUITS.
 - T14 PROVIDE ONE DUPLEX TELEPHONE OUTLET BOX CONNECTED TO A NON-DEDICATED TELEPHONE WITHIN TWO FEET OF FIRE ALARM CONTROL PANEL FOR BACK-UP CONNECTION TO TELEPHONE SYSTEM.

WWW.LDILine.com

OWNERSHIP OF MATERIAL OR SERVICE
 All rights reserved. No part of this document may be reproduced, stored in a retrieval system, or transmitted in any form or by any means, electronic, mechanical, photocopying, recording, or by any information storage and retrieval system, without the prior written permission of the Consultant. The Consultant shall not be held liable for any errors or omissions in this document.

CONSULTANTS

CR
architecture + design

creating extraordinary places
www.cr-architects.com
800-490-6848

CONCANNATI 600 Vine Street, Suite 200, Philadelphia, PA 19106
DENVER 1475 Broadway, Suite 1000, Denver, CO 80202
SAN ANTONIO 10000 North Loop West, Suite 400, Dallas, TX 75243
SEATTLE 800 Second Avenue, Suite 1000, Seattle, WA 98104

MECHANICAL/ELECTRICAL ENGINEERS
WWW.KHENGIS.COM

SEKHLH
ENGINEERS

150 ALEXANDRIA BREEZESUITE 11
FT. THOMAS, KENTUCKY 40321
859-448-8956 FAX

OWNER

Kroger

DATE	ISSUE
10/25/18	5% OWNER REVIEW
11/01/18	100% B/PERMIT

DATE	REVISION

PROJECT TITLE
KROGER STORE R543

MERCURY BLVD.
HAMPTON, VA

COMMISSIONING 517315
ISSUE DATE 10/23/2018
SHEET TITLE
ELECTRICAL MEZZANINE PLANS

SHEET NO.
E4.3

©2018 Associated Architects, Inc.