

DIMMING ZONE LEGEND	
DZA	DIMMING ZONE 'A'
DZB	DIMMING ZONE 'B'
DZC	DIMMING ZONE 'C'
DZD	DIMMING ZONE 'D'
DZE	DIMMING ZONE 'E'

GENERAL NOTES

A. SEE E5-SERIES DRAWING SHEETS FOR ADDITIONAL ELECTRICAL SITE RELATED DETAILS.

B. PROVIDE UL LISTED LABELLED CONDUIT SEALS AT BOTH ENDS OF CONDUIT FOR ALL CONDUIT TO/THROUGH FUEL KIOSKS AFTER ALL WIRING HAS BEEN INSTALLED AND TESTED. INSTALL PER ARTICLE 514 OF THE NATIONAL ELECTRICAL CODE (NEC).

C. PROVIDE THREADED FULL WEIGHT GALVANIZED STEEL RIGID METAL CONDUIT PER NEC ARTICLE 514. FOR ALL UNDERGROUND ELECTRICAL WORK SEE SECTION 11 FUEL KIOSK.

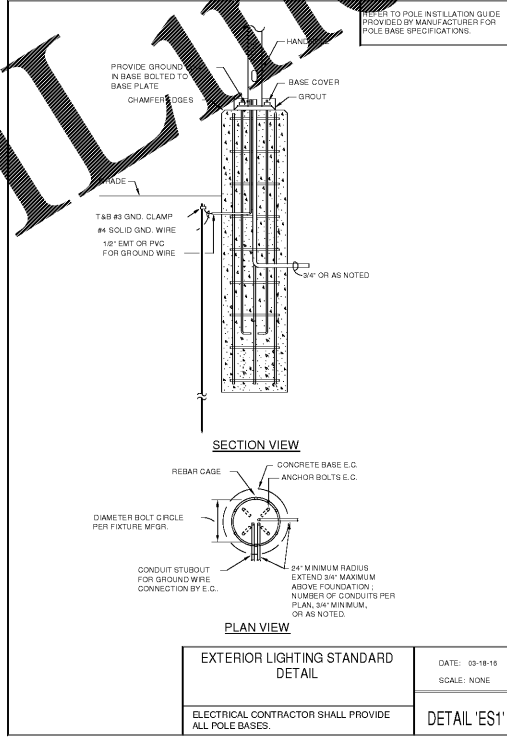
D. PROVIDE THREADED FULL WEIGHT GALVANIZED STEEL RIGID METAL CONDUIT PER NEC ARTICLE 514. FOR ALL UNDERGROUND ELECTRICAL WORK SEE SECTION 11 FUEL KIOSK.

E. GROUND ALL METAL RACEWAYS, METAL ARMOR, METAL C SHEATH AND NON-CURRENT CARRYING CONDUCTORS OR METAL PARTS PER NEC ARTICLE 250.116.

LUMINAIRE SCHEDULE NOTES

1. ALL POLE LUMINAIRE HEIGHTS TO BE DETERMINED BY EATON PHOTOMETRIC DRAWING. FOR POLE BASE REFER TO VLV DRAWINGS.

2. INSTALL ALL SECURITY LIGHTING TO MATCH LUMINAIRE AT HEIGHTS INDICATED ON E5-SERIES DRAWING.



KEYED NOTES

RS1 PROVIDE 18" x 18" x 1" DEEP COMPOSITE HAND HOLE WITH EMPTY 1-1/2" CONDUIT ROUTED TO INSIDE STORE FOR FUTURE EXPANSION OF PARKING LOT LIGHTING. COORDINATE EXACT LOCATION WITH LANDSCAPING PLAN.

RS2 PROVIDE (1) EMPTY 1-1/2" CONDUIT WITH PULL STRINGS FROM HAND HOLE TO CONTACTOR WIREWAY FOR FUTURE PARKING LOT LIGHTING.

RS3 ROUTE CIRCUIT HOME RUNS THROUGH RESPECTIVE LIGHTING CONTACTOR. SEE CONTACTOR SCHEDULES ON E5-SERIES DRAWING SHEETS.

CONSULTANTS

CR architecture + design

creating extraordinary places
www.cr-architects.com
500-480-6848

MECHANICAL/ELECTRICAL ENGINEERS

SEKHLH ENGINEERS

WWW.SEKHLHENGINEERS.COM

LEWISTON, KENTUCKY
LOUISVILLE, KENTUCKY
NEW YORK, NEW YORK

150A ALEXANDRIA PIKE, SUITE 111
FT. THOMAS, KENTUCKY 40369
PH: 502-251-9255
FAX: 502-448-8956

OWNER

Kroger

DATE	ISSUE
10/25/18	5% OWNER REVIEW
11/01/18	10% BDP/RFMT

DATE	REVISION

PROJECT TITLE
KROGER STORE R543

MERCURY BLVD.
HAMPTON, VA

COMMISSION NO. 517315
ISSUE DATE 10/23/2019
SHEET TITLE
SITE ELECTRICAL PLANS AND DETAILS

SHEET NO.
E1.6

©2019 Architecture + Design, Inc.

1 SITE ELECTRICAL PLANS AND DETAILS
1" = 30'-0"

2" REFERENCE LINE

ORDERING OF MATERIALS OR SERVICE...
 11/10/2019 12:24:00 PM

Order Plans @ WWW.LDILLINE.COM