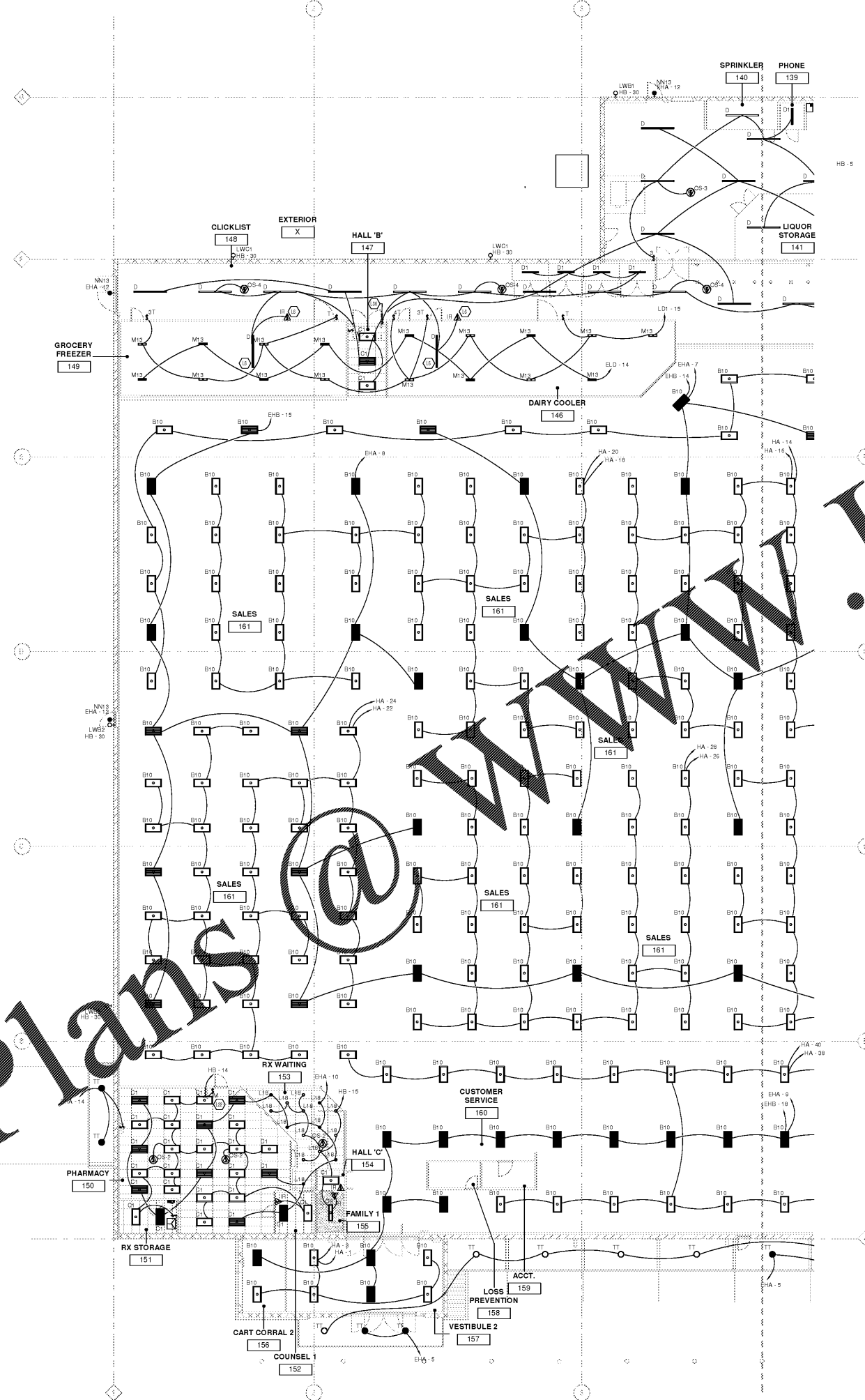


Order Plans @ www.LDILine.com



GENERAL LIGHTING NOTES

- ALL FLUORESCENT LAMPS SHALL BE 3500 K, FURNISHED BY KROGER UNLESS NOTED OTHERWISE.
- DO NOT ATTACH ANY CONDUITS OR SUSPEND ANY LIGHTING FROM ROOF DECK.
- PROVIDE ALL COOLER/FREEZER LIGHTING TIMER SWITCHES AND SET AT 30 MINUTES FOR WALK-IN BOXES; LONGER FOR OTHER AREAS. COORDINATE ALL WORK NAT WALK-IN COOLERS AND FREEZERS WITH RELATED EQUIPMENT AND INSTALLERS.
- WHERE APPLICABLE, MOUNT LUMINAIRES AS CLOSE TO THE BOTTOM OF THE UNISTRUT SUPPORTING THE REFRIGERATION PIPING IN THE BACK AREAS; ELSEWHERE MOUNT LUMINAIRES IN BETWEEN BAR JOISTS TO PROTECT FROM DAMAGE IN THE BACK AREAS; PROVIDE MINIMUM CLEARANCE OF 18" AFF.
- PROVIDE PROTECTIVE CLEAR SAFETY SHIELDS FOR ALL EXPOSED FLUORESCENT LAMPS IN FOOD PREP AREAS AND AREAS WITH UNWRAPPED FOODS, INCLUDING PRODUCE SALES (SEE SPECIFICATIONS).
- PROVIDE LIGHT SENSOR CONTROL FOR ALL EXTERIOR LIGHTING AND SIGN CIRCUITS. SEE CONTRACTOR SCHEDULES ON E6-SERIES DRAWINGS AND DETAILS ON E6-SERIES DRAWINGS.
- EXTERIOR NIGHT WALL MOUNTED LUMINAIRES SHALL BE USED AS DARK TO DARK SECURITY LIGHTS. INSTALL AT MINIMUM 18" ABOVE STORE FLOOR ELEVATION. SEE ARCHITECTURAL ELEVATION DRAWINGS FOR MORE SPECIFIC MOUNTING HEIGHTS.
- CONNECT ALL EMERGENCY LUMINAIRES TO EMERGENCY CIRCUITS SHOWN FOR LUMINAIRES WITH TWIN BALLAST ARRANGEMENT, CIRCUIT EMERGENCY CIRCUIT SHOWN TO BALLAST B'. SEE DETAILS ON E6-SERIES DRAWINGS.
- CONCEAL ALL CONDUIT AND WIRING IN GANTRY STRUCTURE FOR SURFACE MOUNTED LIGHT FIXTURES IN EXTERIOR CANOPY. ALL CONCEALED CONDUIT IN CANOPY STRUCTURES MUST BE RIGID METAL CONDUIT OR INTERMEDIATE METAL CONDUIT PER NEG 300.4(E).
- REFER TO THE E6-SERIES DRAWINGS FOR ALL LIGHTING DETAILS CONCERNING LUMINAIRE MOUNTING, WIRING DETAILS, AND OTHER ADDITIONAL INFORMATION.
- ALL CONDUITS FOR PREP ROOM LIGHTING SHALL BE RUN ON TOP OF INSULATED ROOF PANEL AND STUBBED THRU PANEL INTO LUMINAIRE AT EACH LUMINAIRE LOCATION. REFER TO E6-26 ON E6-SERIES DRAWINGS.
- THE QUEVISION SENSING DEVICE LOCATIONS SHALL HAVE PRIORITY OVER THE INTERIOR LIGHTING PATTERN WHERE INTERFERENCE OCCURS. ELECTRICAL CONTRACTOR SHOULD ADJUST THE LIGHTING PATTERN AS NEEDED TO ACCOMMODATE THE REQUIREMENTS OF THE QUEVISION SENSING DEVICE.

KEYED NOTES

- COOLER PLAFF LIGHTING TO BE INSTALLED ON FORM OF CONCRETE SLAB. FORM B.E.C. TO INSTALL OCCUPANCY SWITCHING ABOVE TOP OF SLAB. REFER TO E6-SERIES DRAWINGS FOR FINAL LOCATION FOR SWITCH IF PROPOSED LOCATION IS NOT WORK.
- MOMENTARY CONTACT SWITCH TO TURN OFF LIGHTS. LIGHTS SHUT OFF (CONTROLLED BY BCI BUILDING CONTROLLER) 2 HOURS AFTER 11:00 PM. REFER TO BUILDING CONTROLLER IO BOARD SHOWN ON E6-SERIES DRAWINGS FOR ADDITIONAL INFORMATION ON CONTROL.
- LIGHTING IN THIS ROOM SHALL BE CONTROLLED BY MANUAL ON/OFF WALL SWITCH AND AUTO OFF WITH CEILING OCCUPANCY SENSOR.

CONSULTANT OF RECORD FOR THE PROJECT. ALL DOCUMENTS AND INSTRUMENTS PROVIDED BY THE CONSULTANT ARE INSTRUMENTS OF SERVICE. ANY REVISIONS, ADDITIONS, DELETIONS, OR OMISSIONS TO ANY INSTRUMENTS OF SERVICE SHALL BE THE RESPONSIBILITY OF THE CONSULTANT. THE CONSULTANT SHALL BE RESPONSIBLE FOR THE ACCURACY OF THE INFORMATION PROVIDED HEREIN. THE CONSULTANT SHALL BE RESPONSIBLE FOR THE ACCURACY OF THE INFORMATION PROVIDED HEREIN. THE CONSULTANT SHALL BE RESPONSIBLE FOR THE ACCURACY OF THE INFORMATION PROVIDED HEREIN.

LIGHTING PLAN AND DETAILS - WEST
3/32" = 1'-0"

2" REFERENCE LINE



GENERAL LIGHTING NOTES

KEYED NOTES

CONSULTANTS

MECHANICAL ELECTRICAL ENGINEERS
WWW.KHENGHS.COM
LEWISTON, KENTUCKY
LOUISVILLE, KENTUCKY
NEW YORK, NEW YORK

SEKHL ENGINEERS
150 ALEXANDRIA BLVD SUITE 11
FT. THOMAS, KENTUCKY 40310
955-448-8256 FAX

Kroger

OWNER

DATE: 10/25/18
ISSUE: 10/25/18
10/25/18 10% OWNER REVIEW
11/01/18 100% B.O.PERM.

PROJECT TITLE
KROGER STORE R543

MERCURY BLVD.
HAMPTON, VA

COMMISSIONING: 517315
ISSUE DATE: 10/23/2018
SHEET TITLE
LIGHTING PLAN AND DETAILS - WEST

SHEETING
E1.1a

creating extraordinary places
www.or-architects.com
500-490-6442

CONSULTANTS

MECHANICAL ELECTRICAL ENGINEERS
WWW.KHENGHS.COM
LEWISTON, KENTUCKY
LOUISVILLE, KENTUCKY
NEW YORK, NEW YORK

SEKHL ENGINEERS
150 ALEXANDRIA BLVD SUITE 11
FT. THOMAS, KENTUCKY 40310
955-448-8256 FAX

Kroger

OWNER

DATE: 10/25/18
ISSUE: 10/25/18
10/25/18 10% OWNER REVIEW
11/01/18 100% B.O.PERM.

PROJECT TITLE
KROGER STORE R543

MERCURY BLVD.
HAMPTON, VA

COMMISSIONING: 517315
ISSUE DATE: 10/23/2018
SHEET TITLE
LIGHTING PLAN AND DETAILS - WEST

SHEETING
E1.1a