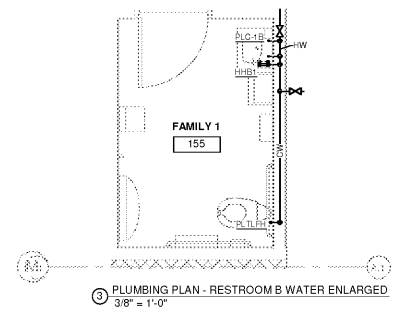
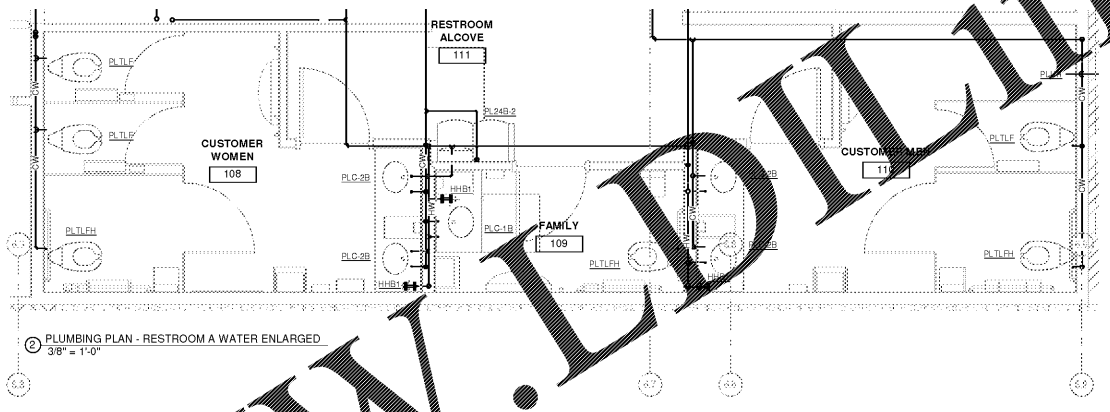
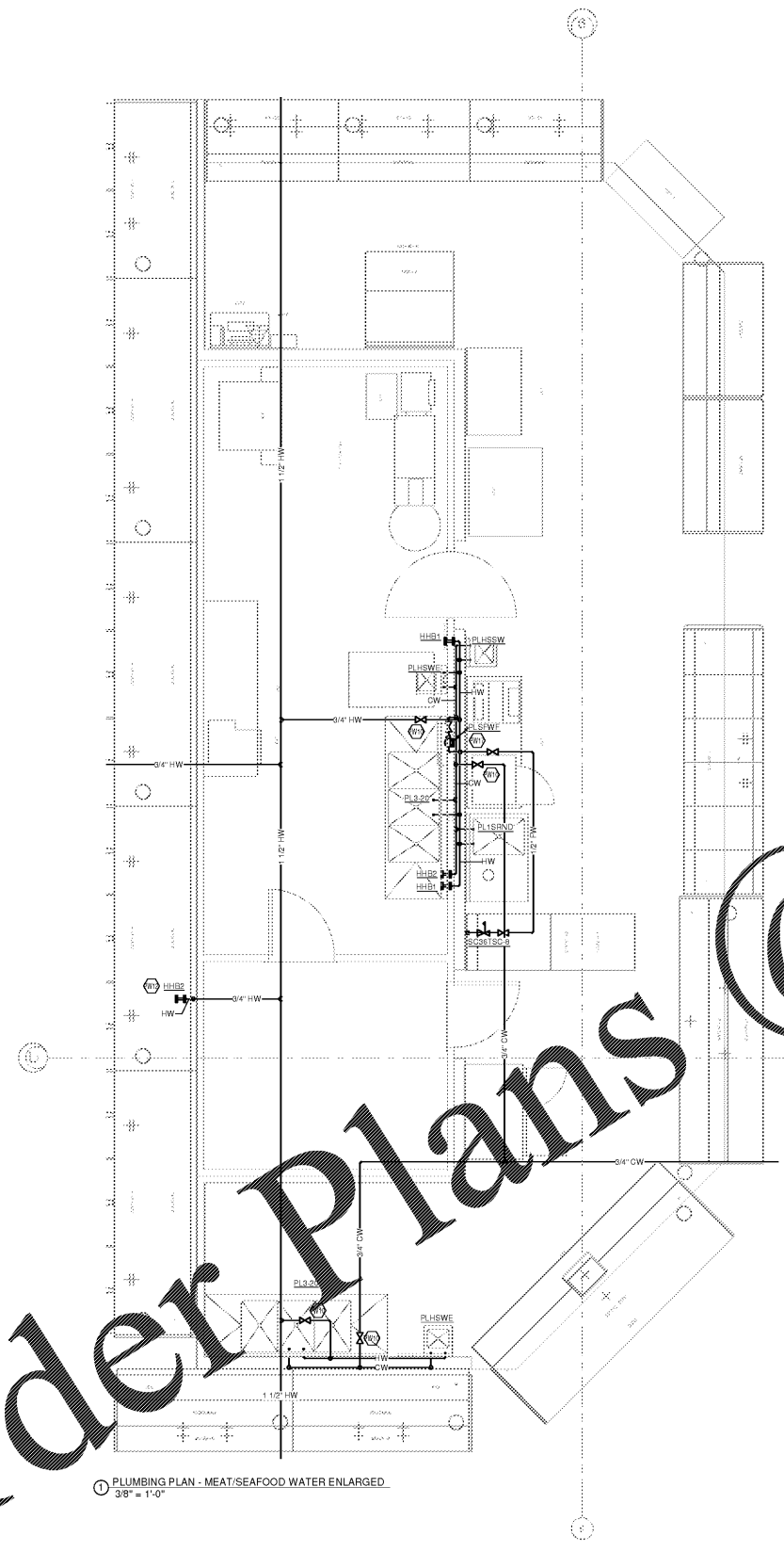


KEYED NOTES

- PW10 BRANCH ISOLATION VALVES TO BE MOUNTED AT 10'0" A.F.F. UNLESS PHYSICALLY IMPOSSIBLE, IN WHICH CASE MOUNT AS CLOSE TO 10'0" A.F.F. AS POSSIBLE. MAKE ACCESSIBLE AND HIDDEN FROM PUBLIC VIEW.
- PW12 CONTRACTOR SUPPLIED FILTER ON 7/8" MANIFOLD FILTER SYSTEM FOR MULTIPLE SINGLE MANFOLD FOR SINGLE FIXTURES FOR ADJACENT FIXTURE. MUST BE MOUNTED 12" BELOW FINISHED CEILING OR EXHAUST HOOD. IN AN ACCESSIBLE LOCATION REFER TO FIXTURE CONNECTION SCHEDULE FOR FIXTURE FILTER REQUIREMENTS. REFER TO PSD-03 ON SHEET P4-1.
- PW17



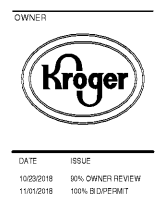
CONSULTING OF SERVICE
 ALL RIGHTS RESERVED. NO PART OF THIS DOCUMENT MAY BE REPRODUCED OR TRANSMITTED IN ANY FORM OR BY ANY MEANS, ELECTRONIC OR MECHANICAL, INCLUDING PHOTOCOPYING, RECORDING, OR BY ANY INFORMATION STORAGE AND RETRIEVAL SYSTEM, WITHOUT THE WRITTEN PERMISSION OF THE CONSULTING ENGINEER.
 11/10/2018 2:08:58 PM

Order Plans @ www.LDLine.com

CINCINNATI 600 Vine Street, Suite 200 Cincinnati, OH 45202
 DENVER 1475 Broadway, Suite 1000 Denver, CO 80202
 SEATTLE 500 Westward Avenue, Suite 1000 Seattle, WA 98104



MECHANICAL/ELECTRICAL ENGINEERS
 WWW.KHENGERS.COM
 LEWISTON, KENTUCKY
 LOUISVILLE, KENTUCKY
 NEW YORK, NEW YORK



DATE	ISSUE
10/25/2018	5% OWNER REVIEW
11/01/2018	100% B/PERMIT

PROJECT TITLE
KROGER STORE R543
 MERCURY BLVD.
 HAMPTON, VA
 COMMISSIONING: 517315
 ISSUE DATE: 10/23/2018
 SHEET TITLE
ENLARGED PLUMBING PLANS - WATER
 SHEET NO.
P4.2b