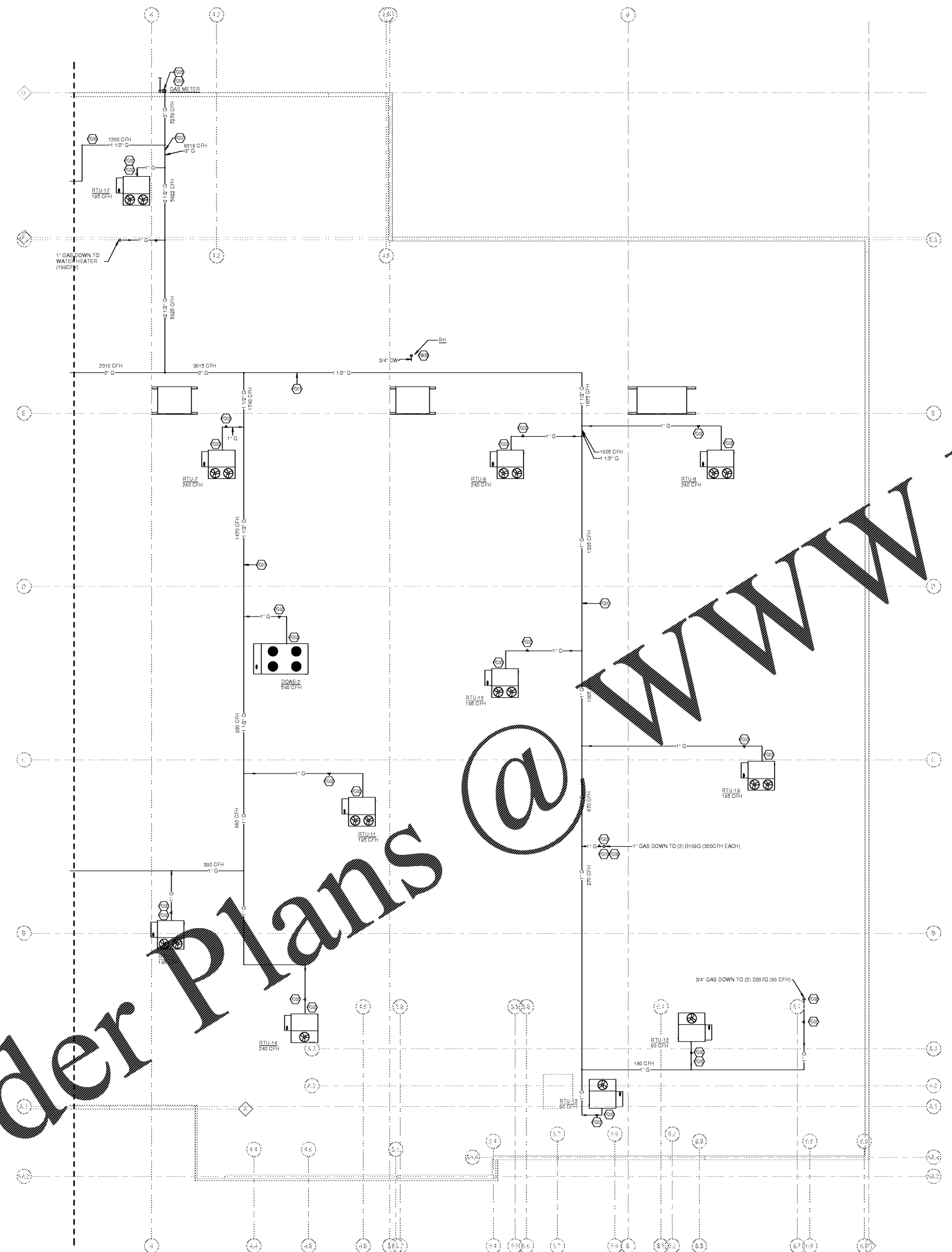


OWNER'S USE ONLY
 OF SERVICE
 ALL RIGHTS RESERVED
 11/10/2018 2:07:18 PM

1 GAS PLAN - EAST
 3/32" = 1'-0"



KEYED NOTES

- P001 GAS PIPING TO BE INSTALLED ON ROOF. PIPING TO BE SUPPORTED OFF ROOF WITH STAND-OFFS & PAINTED TO PREVENT RUSTING. REFER TO DETAIL PSD-01.
- P002 GAS REGULATOR. REGULATOR SHALL REDUCE GAS PRESSURE FROM 2PSI TO 7" WATER COLUMN. REFER TO THE GAS REGULATOR DETAIL ON SHEET P1.3.
- P003 1" VALVED GAS. CONNECT TO HVAC EQUIP. REFER TO DETAIL PSD-06 ON SHEET P1.3 & PLUMBING GAS LOAD SCHEDULE ON SHEET P1.1.
- P005 NEW GAS METER. SIZE FOR 2779 CFH @ 2 PSI.
- P006 POST SIGN THAT STATES THE GAS LINE AND SHUT-OFF VALVE IS THE GENERATOR SUPPLY. GENERATOR SUPPLY SHALL BE INSTALLED UPSTREAM OF THE MAIN BUILDING SUPPLY LINE.
- P007 POST SIGN THAT STATES THE GAS LINE AND SHUT-OFF VALVE IS THE BUILDING SUPPLY.
- P008 1" GAS DOWN THROUGH ROOF.
- P009 NEW GAS SERVICE TO BE SIZED BY GAS COMPANY. REFER TO CIVIL SITE UTILITIES PLAN FOR CONTINUATION.
- P010 ANSUL GAS VALVES FOR KROGER EQUIPMENT PROVIDED BY KROGER, INSTALLED BY PLUMBING CONTRACTOR. PROVIDE AND INSTALL EMERGENCY SHUT-OFF FOR GAS ENTERING THE BUILDING. SIZED ACCORDING TO GAS PIPE SIZE. REFER TO CAPTIVEAIRE GAS SHUT-OFF VALVE SCHEDULE ON THIS SHEET.
- PW08 CW PIPING DOWN THROUGH ROOF. REFER TO SHEET P1.2B FOR CONTINUATION.

CAPTIVEAIRE ANSUL VALVE SCHEDULE

PIPE SIZE	VALVE MODEL NUMBER
3/4"	24-5559
1"	24-5558
1 1/2"	24-5557
2"	24-5556
2 1/2"	24-5555
3"	24-5554

Order Plans @ WWW.LDILLING.COM

LDILLING
 architecture + design

1117 1st Avenue, Suite 100
 Denver, CO 80202
 303.733.1111

1117 1st Avenue, Suite 100
 Denver, CO 80202
 303.733.1111

creating extraordinary places
 www.ldilling.com
 800-400-6442

MECHANICAL ELECTRICAL ENGINEERS
 WWW.KHENGERS.COM

ENGINEERS
 150 ALEXANDRIA PKWY SUITE 11
 FT. THOMAS, KENTUCKY 40325
 909-442-8286

Kroger

OWNER

DATE: 10/25/18
 ISSUE: 5% OWNER REVIEW

DATE: 11/01/18
 REVISION: 100% B/PERMIT

PROJECT TITLE
KROGER STORE R543

MERCURY BLVD
 HAMPTON, VA

COMMISSIONING: 5/17/15
 ISSUE DATE: 10/23/2018
 SHEET TITLE:
GAS PLAN - EAST

SHEET NO.
P1.3b