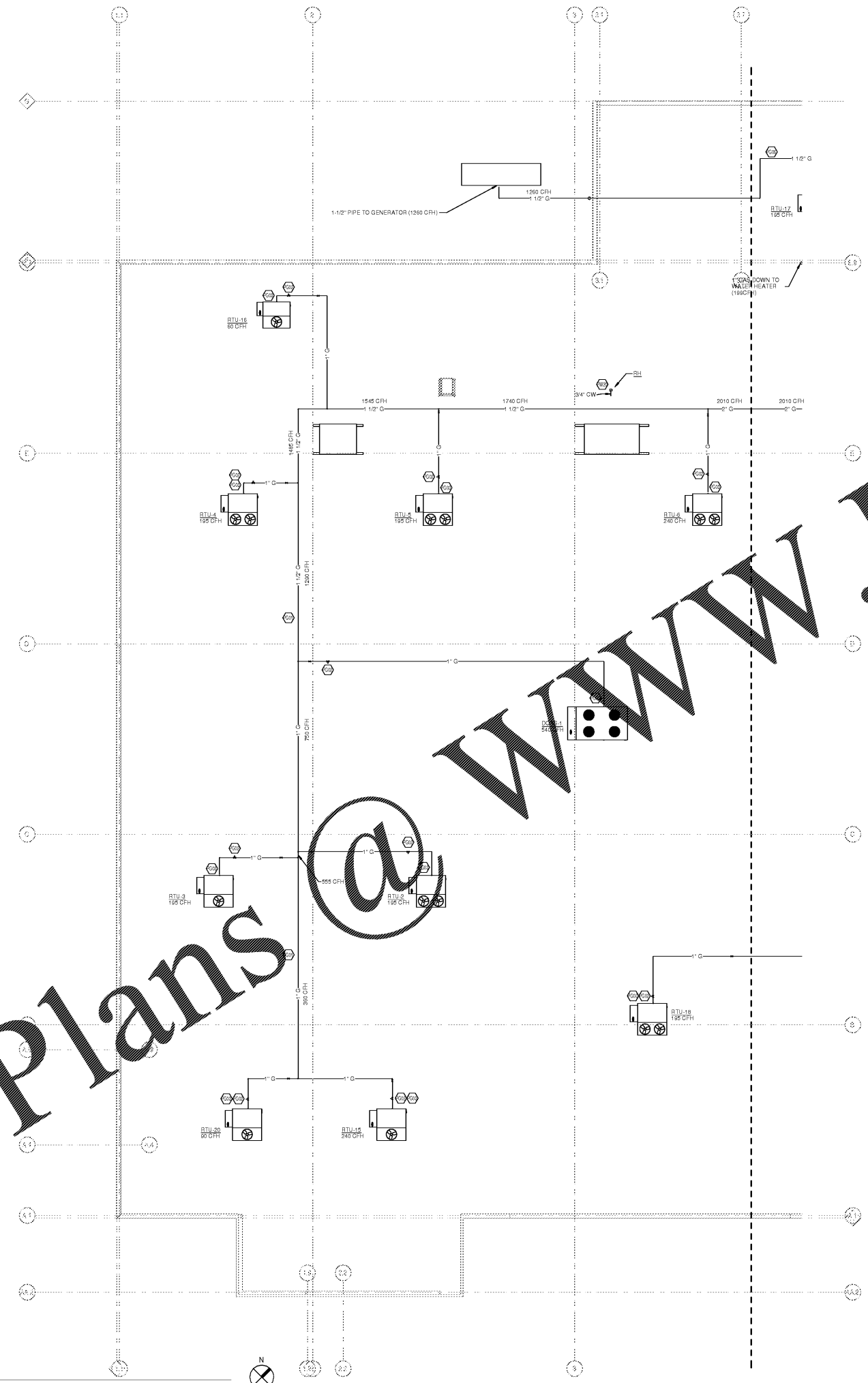


ORDERING OF MATERIALS AND SERVICE: All items, items, specifications, quantities, and notes are subject to change without notice. The Consultant is not responsible for any errors or omissions in this drawing. The Consultant is not responsible for any errors or omissions in this drawing. The Consultant is not responsible for any errors or omissions in this drawing.

1 GAS PLAN - WEST
3/32" = 1'-0"



KEYED NOTES

PG01 GAS PIPING TO BE INSTALLED ON ROOF. PIPING TO BE SUPPORTED OFF ROOF WITH STAND-OFF'S & PAINTED TO PREVENT RUSTING. REFER TO DETAIL PSD-55.

PG02 GAS REGULATOR. REGULATOR SHALL REDUCE GAS PRESSURE FROM PSP TO 7" WATER COLUMN. REFER TO THE GAS REGULATOR DETAIL ON SHEET P-3.

PG03 1" VALVED GAS. CONNECT TO HVAC EQUIP. REFER TO DETAIL PSD-55 ON SHEET P-3 & PLUMBING GAS LOAD SCHEDULE ON SHEET P-4.

PG04 POST SIGN THAT STATES THIS GAS LINE AND SHUT-OFF VALVE IS THE GENERATOR SUPPLY. GENERATOR SUPPLY SHALL BE INSTALLED UPSTREAM OF THE MAIN BUILDING SUPPLY LINE.

PW20 CW PIPING DOWN THROUGH ROOF. REFER TO SHEET P1.3A FOR CONTINUATION.

CAPTIVEAIRE ANSUL VALVE SCHEDULE

PIPE SIZE	VALVE MODEL NUMBER
3/4"	24-5559
1"	24-5558
1-1/4"	24-5558
1-1/2"	24-5559
2-1/2"	24-5559
3"	24-5559

Order Plans @

WWW.LDILine.com

CR
architecture + design

creating extraordinary places
www.cr-architects.com
800-492-6842

CONSULTANTS

CINCINNATI 600 Vine Street, Suite 2000, Cincinnati, OH 45202
DENVER 1875 Broadway, Suite 1000, Denver, CO 80202
DALLAS 1511 Main Street, Suite 400, Dallas, TX 75201
SEATTLE 800 Second Avenue, Suite 1000, Seattle, WA 98104

MECHANICAL ELECTRICAL ENGINEERS
WWW.KHENGERS.COM

KLH ENGINEERS

150 ALEXANDRIA PIKE, SUITE 11
F.T. THOMAS, KENTUCKY 40371
910-442-8255
910-442-8256 FAX

OWNER

Kroger

DATE ISSUE
10/25/18 50% OWNER REVIEW
11/01/18 100% PERMIT

DATE REVISION

--	--

PROJECT TITLE
KROGER STORE R543

MERCURY BLVD.
HAMPTON, VA

COMMISSION NO. 517315
ISSUE DATE 10/23/2018
SHEET TITLE
GAS PLAN - WEST

SHEET NO.
P1.3a

2019 Architectural & Design, Inc.