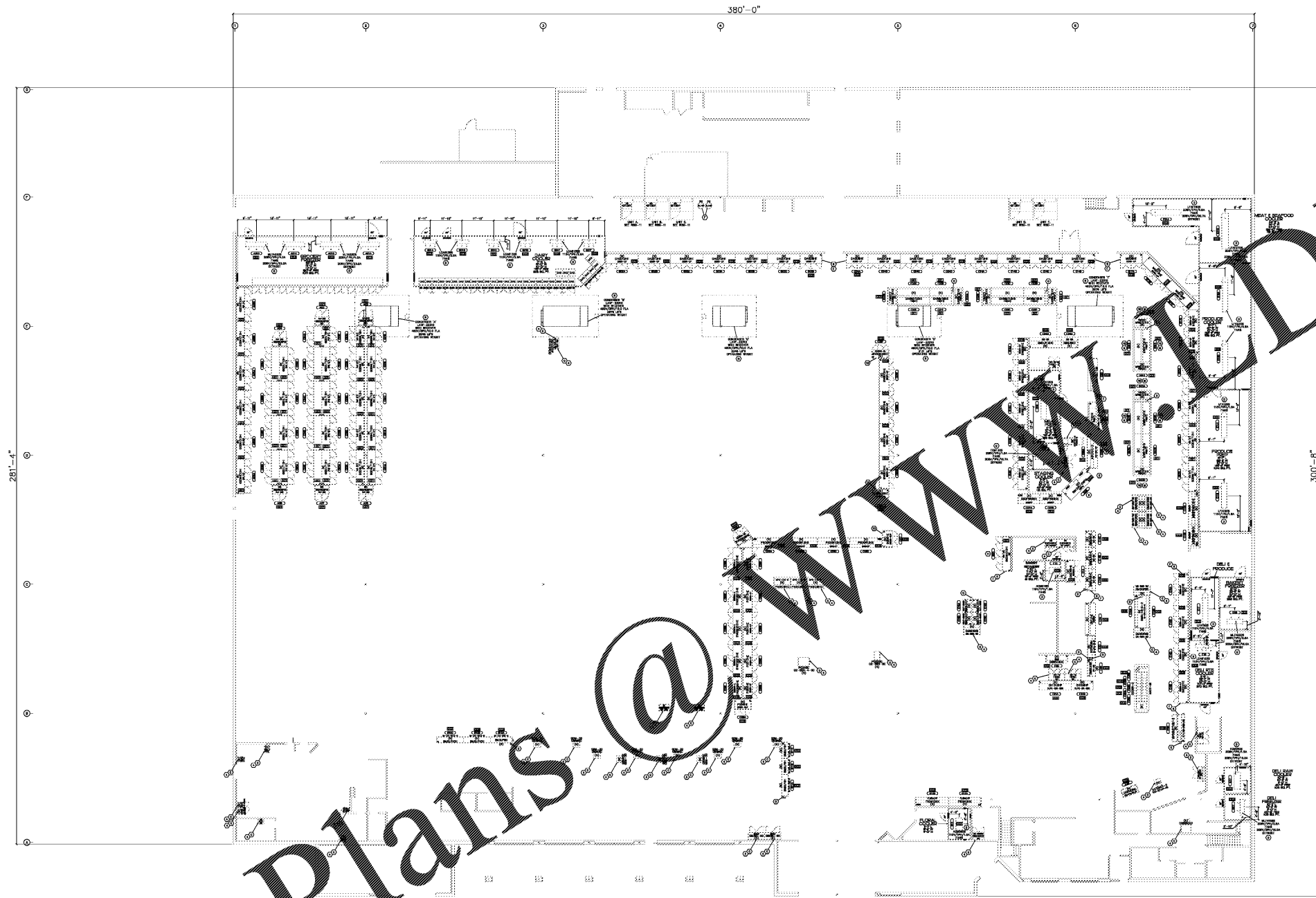


Order Plans @ www.dline.com



VENDOR BID
 1. ALL REFRIGERATION EQUIPMENT SHALL BE SUPPLIED BY THE VENDOR.
 2. THE VENDOR SHALL BE RESPONSIBLE FOR OBTAINING ALL NECESSARY PERMITS.
 3. THE VENDOR SHALL BE RESPONSIBLE FOR THE PROTECTION OF ALL EXISTING UTILITIES.
 4. THE VENDOR SHALL BE RESPONSIBLE FOR THE PROTECTION OF ALL EXISTING STRUCTURE.
 5. THE VENDOR SHALL BE RESPONSIBLE FOR THE PROTECTION OF ALL EXISTING LANDSCAPE.
 6. THE VENDOR SHALL BE RESPONSIBLE FOR THE PROTECTION OF ALL EXISTING TREES.
 7. THE VENDOR SHALL BE RESPONSIBLE FOR THE PROTECTION OF ALL EXISTING UTILITIES.
 8. THE VENDOR SHALL BE RESPONSIBLE FOR THE PROTECTION OF ALL EXISTING STRUCTURE.
 9. THE VENDOR SHALL BE RESPONSIBLE FOR THE PROTECTION OF ALL EXISTING LANDSCAPE.
 10. THE VENDOR SHALL BE RESPONSIBLE FOR THE PROTECTION OF ALL EXISTING TREES.

REFRIGERATION INSTALLER NOTES
 1. ALL REFRIGERATION EQUIPMENT SHALL BE INSTALLED IN ACCORDANCE WITH THE REFRIGERATION INSTALLATION MANUAL.
 2. ALL REFRIGERATION EQUIPMENT SHALL BE INSTALLED IN ACCORDANCE WITH THE REFRIGERATION INSTALLATION MANUAL.
 3. ALL REFRIGERATION EQUIPMENT SHALL BE INSTALLED IN ACCORDANCE WITH THE REFRIGERATION INSTALLATION MANUAL.
 4. ALL REFRIGERATION EQUIPMENT SHALL BE INSTALLED IN ACCORDANCE WITH THE REFRIGERATION INSTALLATION MANUAL.
 5. ALL REFRIGERATION EQUIPMENT SHALL BE INSTALLED IN ACCORDANCE WITH THE REFRIGERATION INSTALLATION MANUAL.
 6. ALL REFRIGERATION EQUIPMENT SHALL BE INSTALLED IN ACCORDANCE WITH THE REFRIGERATION INSTALLATION MANUAL.
 7. ALL REFRIGERATION EQUIPMENT SHALL BE INSTALLED IN ACCORDANCE WITH THE REFRIGERATION INSTALLATION MANUAL.
 8. ALL REFRIGERATION EQUIPMENT SHALL BE INSTALLED IN ACCORDANCE WITH THE REFRIGERATION INSTALLATION MANUAL.
 9. ALL REFRIGERATION EQUIPMENT SHALL BE INSTALLED IN ACCORDANCE WITH THE REFRIGERATION INSTALLATION MANUAL.
 10. ALL REFRIGERATION EQUIPMENT SHALL BE INSTALLED IN ACCORDANCE WITH THE REFRIGERATION INSTALLATION MANUAL.

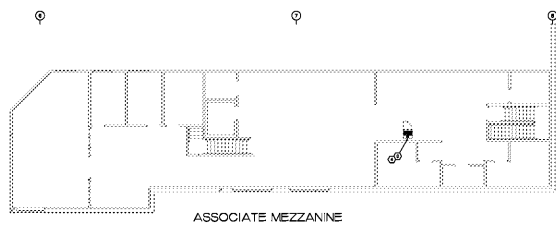
GENERAL NOTES
 1. ALL REFRIGERATION EQUIPMENT SHALL BE INSTALLED IN ACCORDANCE WITH THE REFRIGERATION INSTALLATION MANUAL.
 2. ALL REFRIGERATION EQUIPMENT SHALL BE INSTALLED IN ACCORDANCE WITH THE REFRIGERATION INSTALLATION MANUAL.
 3. ALL REFRIGERATION EQUIPMENT SHALL BE INSTALLED IN ACCORDANCE WITH THE REFRIGERATION INSTALLATION MANUAL.
 4. ALL REFRIGERATION EQUIPMENT SHALL BE INSTALLED IN ACCORDANCE WITH THE REFRIGERATION INSTALLATION MANUAL.
 5. ALL REFRIGERATION EQUIPMENT SHALL BE INSTALLED IN ACCORDANCE WITH THE REFRIGERATION INSTALLATION MANUAL.
 6. ALL REFRIGERATION EQUIPMENT SHALL BE INSTALLED IN ACCORDANCE WITH THE REFRIGERATION INSTALLATION MANUAL.
 7. ALL REFRIGERATION EQUIPMENT SHALL BE INSTALLED IN ACCORDANCE WITH THE REFRIGERATION INSTALLATION MANUAL.
 8. ALL REFRIGERATION EQUIPMENT SHALL BE INSTALLED IN ACCORDANCE WITH THE REFRIGERATION INSTALLATION MANUAL.
 9. ALL REFRIGERATION EQUIPMENT SHALL BE INSTALLED IN ACCORDANCE WITH THE REFRIGERATION INSTALLATION MANUAL.
 10. ALL REFRIGERATION EQUIPMENT SHALL BE INSTALLED IN ACCORDANCE WITH THE REFRIGERATION INSTALLATION MANUAL.

FOLLOWING NOTE APPLIES TO ALL COOLING COILS AND DISPLAY MERCHANDISERS
 1. ALL COOLING COILS AND DISPLAY MERCHANDISERS SHALL BE INSTALLED IN ACCORDANCE WITH THE REFRIGERATION INSTALLATION MANUAL.
 2. ALL COOLING COILS AND DISPLAY MERCHANDISERS SHALL BE INSTALLED IN ACCORDANCE WITH THE REFRIGERATION INSTALLATION MANUAL.
 3. ALL COOLING COILS AND DISPLAY MERCHANDISERS SHALL BE INSTALLED IN ACCORDANCE WITH THE REFRIGERATION INSTALLATION MANUAL.
 4. ALL COOLING COILS AND DISPLAY MERCHANDISERS SHALL BE INSTALLED IN ACCORDANCE WITH THE REFRIGERATION INSTALLATION MANUAL.
 5. ALL COOLING COILS AND DISPLAY MERCHANDISERS SHALL BE INSTALLED IN ACCORDANCE WITH THE REFRIGERATION INSTALLATION MANUAL.
 6. ALL COOLING COILS AND DISPLAY MERCHANDISERS SHALL BE INSTALLED IN ACCORDANCE WITH THE REFRIGERATION INSTALLATION MANUAL.
 7. ALL COOLING COILS AND DISPLAY MERCHANDISERS SHALL BE INSTALLED IN ACCORDANCE WITH THE REFRIGERATION INSTALLATION MANUAL.
 8. ALL COOLING COILS AND DISPLAY MERCHANDISERS SHALL BE INSTALLED IN ACCORDANCE WITH THE REFRIGERATION INSTALLATION MANUAL.
 9. ALL COOLING COILS AND DISPLAY MERCHANDISERS SHALL BE INSTALLED IN ACCORDANCE WITH THE REFRIGERATION INSTALLATION MANUAL.
 10. ALL COOLING COILS AND DISPLAY MERCHANDISERS SHALL BE INSTALLED IN ACCORDANCE WITH THE REFRIGERATION INSTALLATION MANUAL.

CONTROL NOTES
 1. ALL REFRIGERATION EQUIPMENT SHALL BE INSTALLED IN ACCORDANCE WITH THE REFRIGERATION INSTALLATION MANUAL.
 2. ALL REFRIGERATION EQUIPMENT SHALL BE INSTALLED IN ACCORDANCE WITH THE REFRIGERATION INSTALLATION MANUAL.
 3. ALL REFRIGERATION EQUIPMENT SHALL BE INSTALLED IN ACCORDANCE WITH THE REFRIGERATION INSTALLATION MANUAL.
 4. ALL REFRIGERATION EQUIPMENT SHALL BE INSTALLED IN ACCORDANCE WITH THE REFRIGERATION INSTALLATION MANUAL.
 5. ALL REFRIGERATION EQUIPMENT SHALL BE INSTALLED IN ACCORDANCE WITH THE REFRIGERATION INSTALLATION MANUAL.
 6. ALL REFRIGERATION EQUIPMENT SHALL BE INSTALLED IN ACCORDANCE WITH THE REFRIGERATION INSTALLATION MANUAL.
 7. ALL REFRIGERATION EQUIPMENT SHALL BE INSTALLED IN ACCORDANCE WITH THE REFRIGERATION INSTALLATION MANUAL.
 8. ALL REFRIGERATION EQUIPMENT SHALL BE INSTALLED IN ACCORDANCE WITH THE REFRIGERATION INSTALLATION MANUAL.
 9. ALL REFRIGERATION EQUIPMENT SHALL BE INSTALLED IN ACCORDANCE WITH THE REFRIGERATION INSTALLATION MANUAL.
 10. ALL REFRIGERATION EQUIPMENT SHALL BE INSTALLED IN ACCORDANCE WITH THE REFRIGERATION INSTALLATION MANUAL.

SHEET INDEX
 1. REFRIGERATION EQUIPMENT LAYOUT
 2. REFRIGERATION EQUIPMENT LAYOUT
 3. REFRIGERATION EQUIPMENT LAYOUT
 4. REFRIGERATION EQUIPMENT LAYOUT
 5. REFRIGERATION EQUIPMENT LAYOUT
 6. REFRIGERATION EQUIPMENT LAYOUT
 7. REFRIGERATION EQUIPMENT LAYOUT
 8. REFRIGERATION EQUIPMENT LAYOUT
 9. REFRIGERATION EQUIPMENT LAYOUT
 10. REFRIGERATION EQUIPMENT LAYOUT

LEGEND
 1. REFRIGERATION EQUIPMENT LAYOUT
 2. REFRIGERATION EQUIPMENT LAYOUT
 3. REFRIGERATION EQUIPMENT LAYOUT
 4. REFRIGERATION EQUIPMENT LAYOUT
 5. REFRIGERATION EQUIPMENT LAYOUT
 6. REFRIGERATION EQUIPMENT LAYOUT
 7. REFRIGERATION EQUIPMENT LAYOUT
 8. REFRIGERATION EQUIPMENT LAYOUT
 9. REFRIGERATION EQUIPMENT LAYOUT
 10. REFRIGERATION EQUIPMENT LAYOUT



MID-ATLANTIC (NEW) ARTISAN
 3633 PETERS CREEK ROAD
 ROANOKE, VA
 P-ONE (540) 563-3646
 FAX (540) 563-3636



NEW STORE
R-543
 MERCURY BLVD.
 HAMPTON, VA

CURRENT PLAN DATE:	9/4/2018
ORIGINAL PLAN DATE:	9/4/2018
DESIGNER:	E. RUM
CHECKED:	
PERFORMED:	
ETAWARD PLANNING GROUP	1/8"=1'-0"
BUILDING STATS:	
TOTAL SHELVING	3,303 LF
SALES AREA	73,360 SF
8' X 8' ISLES	118
BASE STORE	65,423 SF
MEZZANINE	
DOCK / UTILITY	5,242 SF
OFFICE BUILDING	104,824 SF
REFRIGERATION EQUIPMENT LAYOUT	
REFRIG. PACKAGE ID:	Not Applicable
R-543	
R1.1	
CHG FILE:	2543R1.DWG