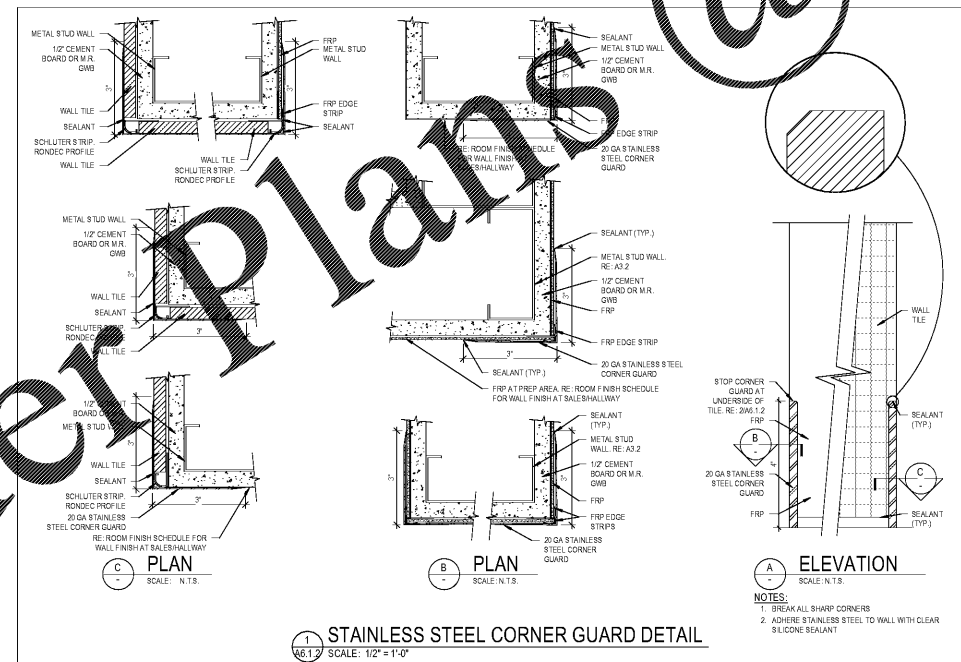
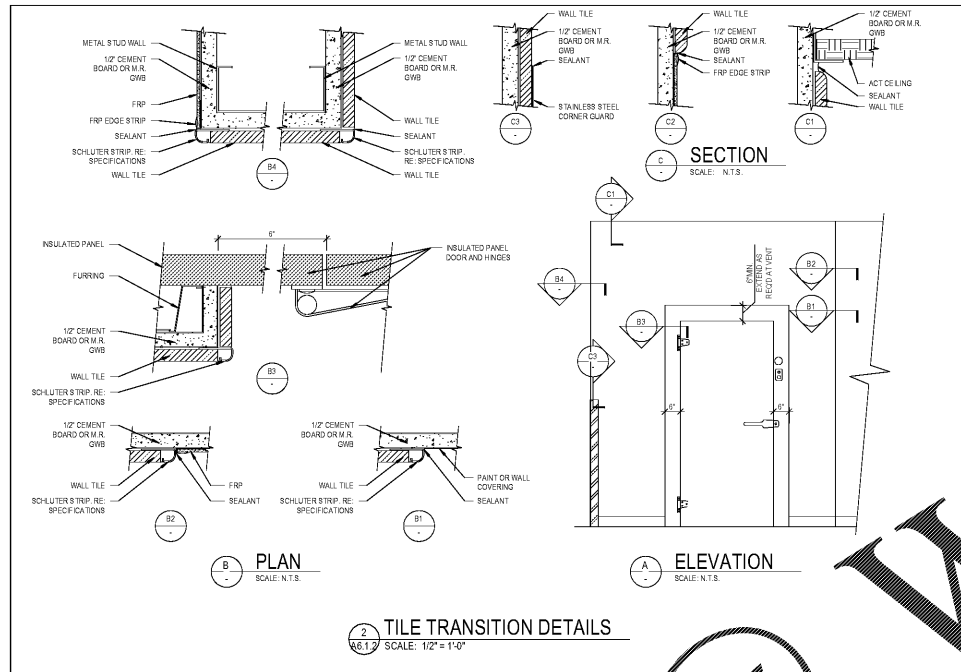


ROOM FINISH SCHEDULE

GENERAL NOTES	NOTES	LEGEND
<p>A. REFER TO S1 FOR GD DETAILS</p> <p>B. FOR COLORS BEGINNING WITH "1", REFER TO SPECIFICATION SECTION 01 51 15, THE LITTLE CLINIC INTERIOR FINISHES AND COLORS</p> <p>C. REFER TO A2.1, EXTERIOR ELEVATIONS, FOR FINISHES OF HOLLOW METAL DOORS AND FRAMES ON EXTERIOR OF THE BUILDING</p> <p>D. ALL MISCELLANEOUS TRIM TO BE PAINTED TO MATCH ADJACENT SURFACE UN.D.</p> <p>E. REFER TO A1.3 FOR ADDITIONAL CEILING INFORMATION</p> <p>F. ALUMINUM 8' TORSION TREAT PLATE FRAMES/SLINK GATES TO BE LEFT UNPAINTED</p> <p>G. FOR COLORS BEGINNING WITH "7", REFER TO SPECIFICATION SECTION 01 51 15, ARTISAN DECOR</p>	<p>1. EXPOSED CEILING: STRUCTURAL STEEL, METAL DECK, ELECTRICAL CONDUIT, DUCTWORK, PIPING, UNSTRUT, ETC., EXPOSED COLUMN, EXPOSED VERTICAL PIPING, ELECTRICAL PANELS AND BLOCK WALLS UN.D. TO BE LEFT UNPAINTED.</p> <p>2. EXPOSED CEILING: DO NOT PAINT ITEMS ABOVE 18" AFF. EXCEPT FOR GWS ALL GWS THAT EXTENDS TO DECK SHALL BE PAINTED PER DECOR DRAWINGS</p> <p>3. GWS RE: A1.1 FOR TYPE AND EXTENTS</p> <p>4. REFER TO A1.4 FOR EXTENTS OF FINISHES AND WALL BASE TYPE/LOCATION</p> <p>5. APPLY 84-701 WHERE STAIR TREADS DO NOT OCCUR</p> <p>6. GLAZING TO 2 1/4" AFF WITH WALL COVERING ON PAINT ABOVE TO CEILING OR BOTTOM OF DECK</p> <p>7. RE: IN-TERROR ELEVATIONS FOR WALL FINISHES</p> <p>8. EXPOSED VERTICAL PIPING, EXPOSED STRUCTURAL STEEL ON STOREFRONT AND ELECTRICAL PANELS, PAINT TO MATCH ADJACENT SURFACE</p> <p>9. EX-TERROR OF PANELS VISIBLE TO PUBLIC TO BE 701</p> <p>10. PROVIDE LEVEL 2 FINISH TO BOTTOM OF STRUCTURE</p> <p>11. RE: 11.5 FOR WALL FINISHES</p>	<p>AC - ACOUSTIC CEILING PANEL</p> <p>BP - BUMPER</p> <p>CA - SANITARY PVC COVE HOLDING</p> <p>CL - PREF FINISHED WOOD</p> <p>F - FIBERGLASS PANEL/FIBERGLASS REINFORCED PANELS (FR)</p> <p>CP - CARPET/ENTRANCE FLOORING SYSTEM</p> <p>CS - STAINED AND POLISHED CONCRETE</p> <p>CT - QUARRY TILE/ CERAMIC TILE</p> <p>IP - PREFABRICATED INSULATED WALL PANELS</p> <p>PC - POLISHED CONCRETE</p> <p>PL - ELEVATOR WALL PANELS</p> <p>PT - PAINT</p> <p>RF - REFINISH FLOORING</p> <p>RT - RESILIENT FLOOR TRIM</p> <p>SA - STAIR ACCESSORIES</p> <p>SC - SEALED CONCRETE</p> <p>VT - VINYL COMPOSITION TILE/ FAUX WOOD VINYL PLANK</p> <p>WB - RESILIENT WALL BASE</p> <p>WC - VINYL WALL COVERING</p>
<p>MISCELLANEOUS ITEMS</p> <p>1. GYPSUM BOARD CEILING NOT VISIBLE TO PUBLIC TO BE P1-102</p> <p>2. GYPSUM BOARD CEILING ON SALES FLOOR TO BE P1-102</p> <p>3. WALL SURFACES NOT OTHERWISE NOTED VISIBLE TO PUBLIC TO BE P1-104</p>		



RM #	ROOM NAME	FLOOR		WALL BASE		WALLS		HOLLOW METAL DOORS AND DOOR FRAMES		CEILING		COMMENTS			
		MATL	COLOR	REFERENCE INFORMATION	MATL	COLOR	REFERENCE INFORMATION	MATL	COLOR	REFERENCE INFORMATION	MATL		COLOR	REFERENCE INFORMATION	
100	VESTIBULE 1	CP	702	NOTE 4	WB	701	NOTES 3/4	CL	704	NOTE 7	-	NOTE 2	INSTALL BP-701 AT 6" AFF AND 20" AFF		
101	CART CORRAL 1	PC	-	NOTE 4	WB	701	NOTES 3/4	CL	704	NOTE 7	PT	707	NOTE 2	INSTALL BP-701 AT 6" AFF AND 20" AFF	
102	FLORAL PREP	PC	-	-	WB	701	-	CL	704	NOTE 7	-	-	NOTE 2	-	
103	FLORAL STOR	SC	-	-	WB	701	-	PT	704	-	-	-	NOTE 2	-	
104	FLORAL COOLER	SC	-	-	WB	701	NOTE 4	IP	701	NOTE 9	-	IP	701	NOTE 9	
105	STARBUCKS STORAGE	SC	-	-	WB	701	-	PT	704	-	PT	707	-	NOTE 2	
106	SEATING	PC	-	-	WB	701	-	CL	701	NOTE 7/11	PT	707	-	NOTE 2	
107	VESTIBULE 3	CP	702	NOTE 4	WB	701	-	CL	701	NOTE 7	PT	707	AC	702	INSTALL BP-701 AT 6" AFF AND 20" AFF
108	CUSTOMER WOMEN	CT	702	RE: GD-3	CA	702	RE: GD-3	CT	703/704	RE: GD-3	PT	707	PT	702	-
109	FAMILY	CT	702	RE: GD-3	CA	702	RE: GD-3	CT	703/704	RE: GD-3	PT	707	PT	702	-
110	CUSTOMER MEN	CT	702	RE: GD-3	CA	702	RE: GD-3	CT	703/704	RE: GD-3	PT	707	PT	702	-
111	RESTROOM ALCOVE	PC	-	-	WB	701	-	PT	704	NOTE 7	PT	707	AC	702	-
112	STORAGE	SC	-	-	WB	701	-	PT	704	-	PT	707	-	NOTE 2	-
113	DELI PREP 'A'	RF	701	NOTE 4	CT	711	NOTE 4	CL	703	NOTE 11	-	IP	701	-	NOTE 1
114	DELI FREEZER	SC	-	-	-	-	NOTE 4	IP	701	NOTE 9	-	IP	701	-	NOTE 1
115	DELI RAW COOLER	RF	701	NOTE 4	-	-	NOTE 4	IP	701	NOTE 9	-	IP	701	-	NOTE 1
116	DELI SERVICE 'A'	RF	701	NOTE 4	CT	711	NOTE 4	CT	706	NOTE 11	PT	707	AC	703	-
117	SUSHI SERVICE	RF	701	NOTE 4	CT	711	NOTE 4	CT	706	NOTE 11	-	AC	703	-	NOTE 1
118	SUSHI PREP	RF	701	NOTE 4	CT	711	NOTE 4	CL	703	-	-	AC	703	-	NOTE 1
119	DELI RTE COOLER	RF	701	NOTE 4	-	-	NOTE 4	IP	701	NOTE 9	-	IP	701	-	NOTE 1
120	DELI PREP 'B'	RF	701	NOTE 4	-	-	NOTE 4	IP	701	NOTE 9	-	IP	701	-	NOTE 1
121	BAKERY FREEZER	SC	-	-	-	-	NOTE 4	IP	701	NOTE 9	-	IP	701	-	NOTE 1
122	CHEESE SHOP	RF	701	NOTE 4	CT	711	NOTE 4	CT	706	NOTE 11	-	AC	703	-	NOTE 1
123	BAKERY PREP	RF	701	NOTE 4	CT	711	NOTE 4	CT	707	NOTE 11	-	AC	703	-	NOTE 1
124	BAKERY RETARDER	RF	701	NOTE 4	-	-	NOTE 4	IP	701	NOTE 9	-	IP	701	-	NOTE 1
125	DELI SERVICE 'B'	RF	701	NOTE 4	CT	711	NOTE 4	CT	706	NOTE 11	-	AC	703	-	NOTE 1
126	HALL 'A'	SC	-	-	WB	701	-	-	-	-	-	-	-	-	NOTE 1
127	PRODUCE PREP	SC	-	-	-	-	NOTES 3/4	IP	701	NOTE 9	-	IP	701	-	NOTE 1
128	PRODUCE COOLER	SC	-	-	-	-	NOTES 3/4	IP	701	NOTE 9	-	IP	701	-	NOTE 1
129	SEAFOOD COOLER	RF	701	NOTE 4	-	-	NOTES 3/4	IP	701	NOTE 9	-	IP	701	-	NOTE 1
130	MEAT / SEAFOOD SERVICE	RF	701	NOTE 4	CT	711	NOTE 4	CT	706	NOTE 11	-	AC	703	-	NOTE 1
131	MEAT COOLER	RF	701	NOTE 4	-	-	NOTE 4	IP	701	NOTE 9	-	IP	701	-	NOTE 1
132	MEAT PREP	RF	701	NOTE 4	-	-	NOTE 4	IP	701	NOTE 9	-	IP	701	-	NOTE 1
133	BACKS	SC	-	-	-	-	NOTE 3	-	-	-	PT	707	-	-	*UNPAINTED U.N.O. ON A1.6
134	DELI SERVICE 'C'	SC	-	-	-	-	NOTE 3	-	-	-	-	-	-	-	*UNPAINTED U.N.O. ON A1.6
135	DELI SERVICE 'D'	SC	-	-	-	-	NOTE 3	-	-	-	-	-	-	-	*EPOXY PAINT P-7 WHITE
136	CLEANING CENTRAL	SC	-	-	-	-	NOTE 3	CL	703	NOTE 4	-	-	-	-	NOTE 1
137	COCK	SC	-	-	-	-	NOTE 3	-	-	-	PT	707	-	-	*UNPAINTED U.N.O. ON A1.6
138	ELECTRICAL	SC	-	-	-	-	NOTE 3	-	-	-	PT	707	-	-	*UNPAINTED U.N.O. ON A1.6
139	ONE	SC	-	-	-	-	NOTE 3	-	-	-	-	-	-	-	*UNPAINTED U.N.O. ON A1.6
140	SINKLER	SC	-	-	-	-	NOTE 3	-	-	-	-	-	-	-	*UNPAINTED U.N.O. ON A1.6
141	LIQUOR STORAGE	SC	-	-	-	-	NOTE 3	-	-	-	-	-	-	-	*UNPAINTED U.N.O. ON A1.6
142	LIQUOR STORAGE 'A'	SC	-	-	-	-	NOTE 3	-	-	-	-	-	-	-	*UNPAINTED U.N.O. ON A1.6
143	LIQUOR STORAGE 'B'	SC	-	-	-	-	NOTE 3	-	-	-	-	-	-	-	*UNPAINTED U.N.O. ON A1.6
144	RECORDS	SC	-	-	-	-	NOTE 3	-	-	-	-	-	-	-	*UNPAINTED U.N.O. ON A1.6
145	OFFICE RECORDS	SC	-	-	-	-	NOTE 3	-	-	-	-	-	-	-	*UNPAINTED U.N.O. ON A1.6
146	DAIRY COOLER	RF	702	NOTE 4	-	-	NOTES 3/4	IP	701	NOTE 9	-	IP	701	-	NOTE 1
147	HALL 'B'	SC	-	-	WB	701	-	CT	704	-	PT	707	AC	702	-
148	CLICKLIST	SC	-	-	-	-	NOTE 3	-	-	-	-	-	-	-	NOTE 1
149	GROCERY FREEZER	SC	-	-	-	-	NOTES 3/4	IP	701	NOTE 9	-	IP	701	-	NOTE 1
150	PHARMACY	CP	701	NOTE 4	WB	701	-	PT	704	-	PT	707	AC	701	-
151	RX STORAGE	CP	701	NOTE 4	WB	701	-	PT	704	-	PT	707	AC	701	-
152	COUNSEL 1	CP	701	NOTE 4	WB	701	-	CL	701	-	PT	707	AC	701	-
153	RX WAITING	PC	-	-	WB	701	-	CL	701	NOTE 7	PT	707	AC	701	INSTALL BP-701 AT 29" AFF
154	HALL 'C'	PC	-	-	WB	701	-	CL	701	NOTE 7	PT	707	AC	701	-
155	FAMILY 1	CT	702	RE: GD-3	CA	702	RE: GD-3	CT	703/704	RE: GD-3	PT	707	PT	702	-
156	CART CORRAL 2	PC	-	NOTE 4	-	-	NOTES 3/4	CL	701	NOTE 3/7	PT	707	-	NOTE 2	INSTALL BP-701 AT 6" AFF AND 20" AFF
157	VESTIBULE 2	CP	702	NOTE 4	WB	701	NOTES 3/4	CL	701	NOTE 3/7	-	-	NOTE 2	INSTALL BP-701 AT 6" AFF AND 20" AFF	
158	LOSS PREVENTION	SC	-	-	WB	701	-	PT	704	-	PT	707	-	-	NOTE 1
159	ACCT.	PC	-	-	WB	701	-	PT	704	-	PT	707	-	-	NOTE 2
160	CUSTOMER SERVICE	PC	-	-	WB	701	-	PT	704	NOTE 7	PT	707	-	-	NOTE 2
161	SALES	PC	-	-	WB	701	-	PT	704	NOTE 7	PT	707	-	-	NOTE 2
200	KTV CONFERENCE ROOM	SC	-	-	WB	701	-	CL	701	NOTE 6	PT	707	AC	701	-
201	OPEN OFFICE	SC	-	-	WB	701	-	CL	701	-	PT	707	AC	701	-
202	HR OFFICE	SC	-	-	WB	701	-	CL	701	-	PT	707	AC	701	-
203	MANAGER	SC	-	-	WB	701	-	CL	701	-	PT	707	AC	701	-
204	ECR	SC	-	-	WB	701	-	CL	710	-	PT	707	-	-	NOTE 1
205	ELEV. EQUIP	SC	-	-	WB	701	-	PT	704	-	PT	707	-	-	NOTE 1
206	BREAK ROOM	SC	-	-	WB	701	-	CL	701	NOTE 6	PT	707	AC	701	-
207	ASSOCIATE WOMEN	CT	702	RE: GD-3	CA	702	RE: GD-3	CT	703/704	RE: GD-3	PT	707	PT	702	-
208	HEALTH & WELLNESS	SC	-	-	WB	701	-	PT	704	-	PT	707	AC	701	-
209	ASSOCIATE MEN	CT	702	RE: GD-3	CA	702	RE: GD-3	CT	703/704	RE: GD-3	PT	707	PT	702	-
210	HALL 'D'	SC	-	-	WB	701	-	CL	701	-	PT	707	AC	701	-
211	EMPLOYEE SECURE STORAGE	SC	-	-	WB	701	-	PT	704	-	-	AC	701	-	NOTE 1
212	ELECTRICAL CLOSET	SC	-	-	WB	701	-	PT	704	-	PT	707	-	-	NOTE 1
300	ELEVATOR	VS	701	-	WB	701	-	WC	-	-	PT	707	-	-	-
301	STAIR 1	SC	-	-	WB	701	-	CL	701	NOTE 7	PT	707	-	-	NOTE 1
302	STAIR 2	SC	-	-	WB	701	-	CL	701	NOTE 7	PT	707	-	-	NOTE 1

EXECUTED BY: GB
 REVIEWED BY: AF

CINCINNATI 800 W. 8th St. Ste. 2200, Cincinnati, OH 45202
 DENVER 1925 Broadway, Suite 1000, Denver, CO 80202
 DALLAS 1500 Ross Street, Suite 1000, Dallas, TX 75201
 HOUSTON 2002 West Loop South, Suite 1000, Houston, TX 77027
 SEATTLE 900 2nd Avenue, Suite 2000, Seattle, WA 98104

CR
 architecture + design

creating extraordinary places
 www.cr-architects.com
 300.699.4949

CONSTRUCTION

OWNER

Kroger

DATE: 8/24/18
 11/23/18 50% OWNER REVIEW
 11/01/18 100% PERMIT

DATE: 11/01/18

PROJECT TITLE
KROGER STORE R543

1059 W. Mercury Blvd.
 Hampton, VA 23066

COMMISSION NO: 518344
 ISSUE DATE: 11/01/18
 SHEET TITLE: INTERIOR FINISH SCHEDULE + DETAILS

SHEET NO: **A6.1.2**

Order Plans @

WWW.IDLINE.COM