


EXECUTED BY: GB
 REVIEWED BY: AF
 CONCERNANT: 000 NW 24th St., Suite 200, Seattle, WA 98107
 DENVER: 875 Broadway, Suite 1000, Denver, CO 80202
 DALLAS: 1000 Ross Street, Suite 1000, Dallas, TX 75202
 CHICAGO: 200 North Dearborn Street, Suite 200, Chicago, IL 60610
 SEATTLE: 900 2nd Avenue, Suite 2000, Seattle, WA 98104
 architecture + design

CONSULTANTS

OWNER

 DATE: 03/14
 10/28/18 90% OWNER REVIEW
 11/01/18 100% PERMIT

DATE REVISION

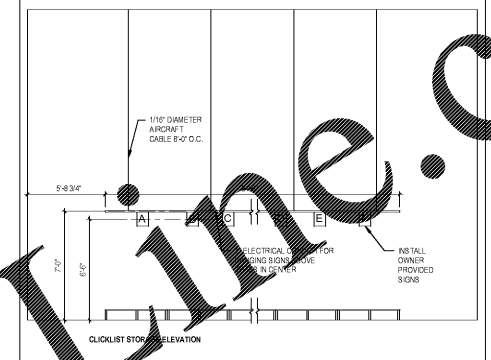
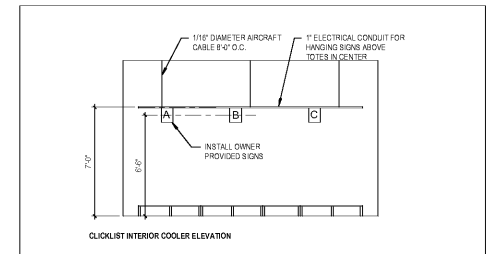
PROJECT TITLE
**KROGER STORE
 R543**

1050 W. Mercury Blvd.
 Hampton, VA 23066

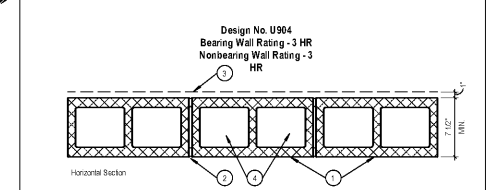
COMMISSION NO: 518344
 ISSUE DATE: 11/01/18

SHEET TITLE
**ARCHITECTURAL
 PROJECT-SPECIFIC
 DETAILS**

SHEET NO.
A5.2

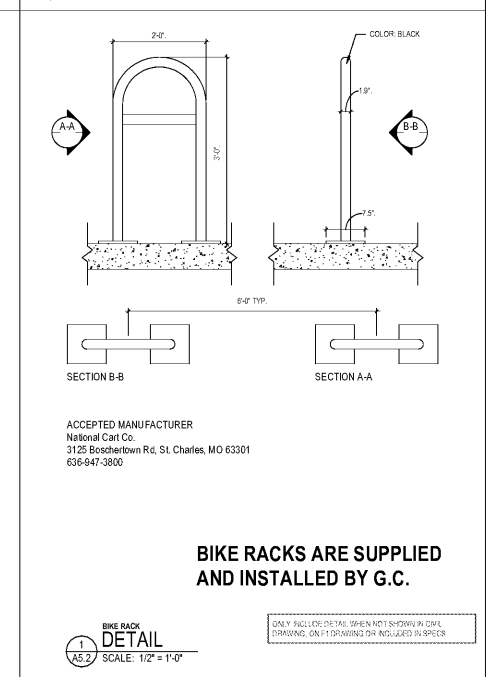
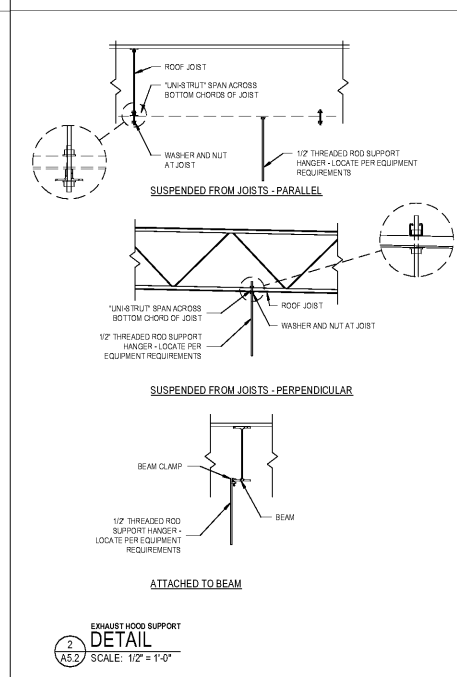
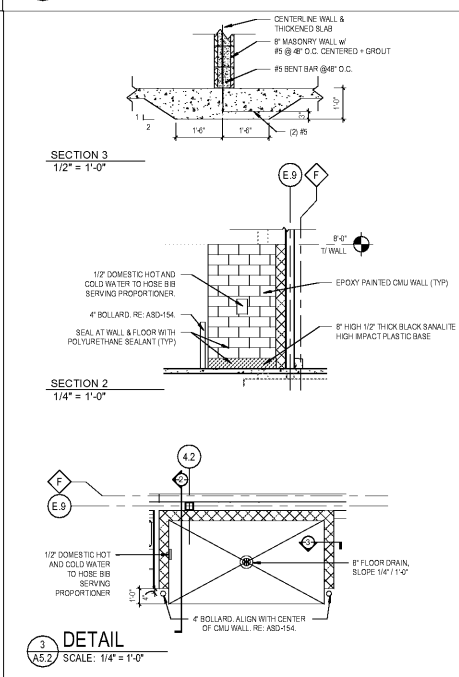
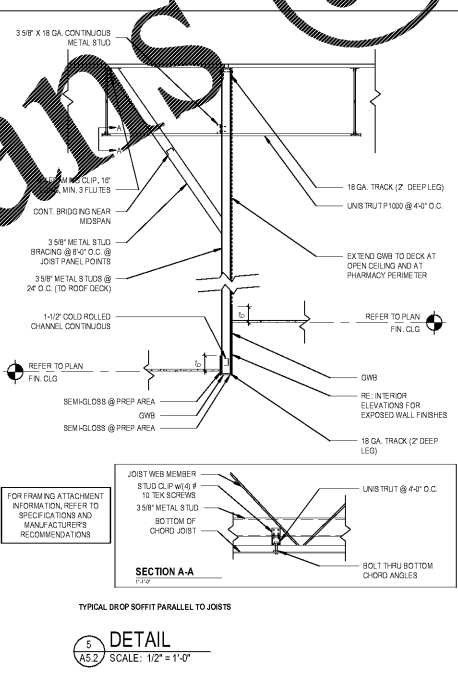
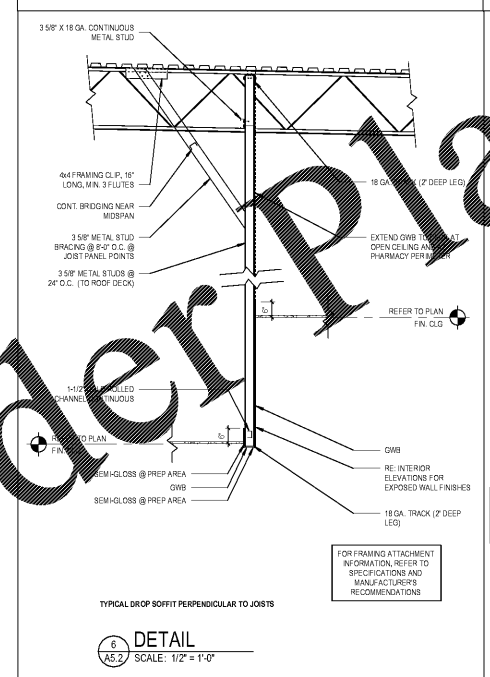
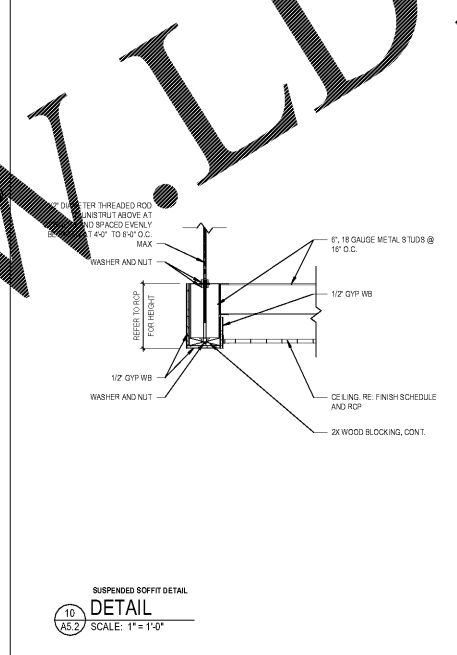
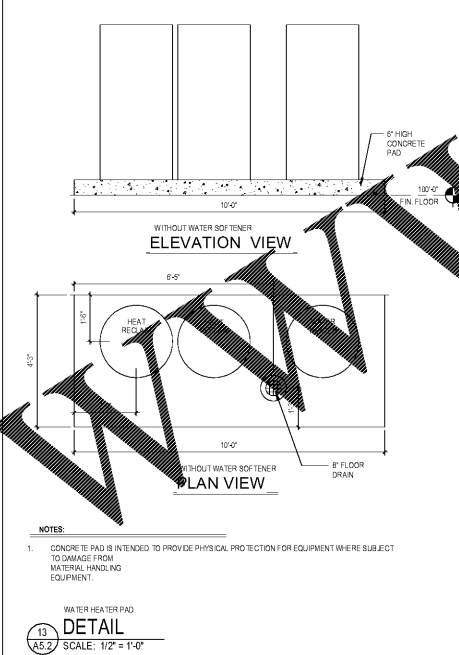
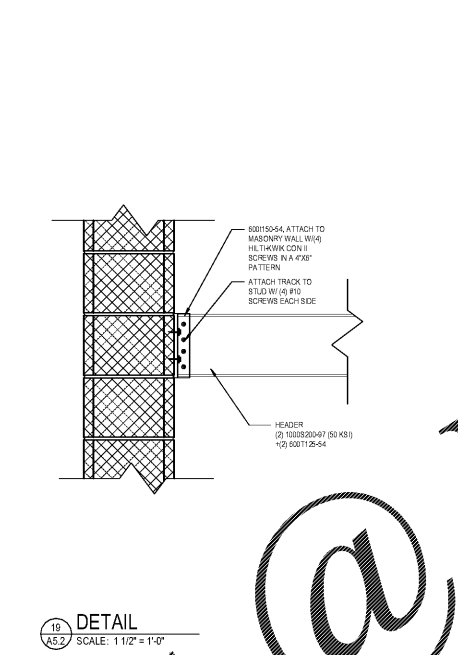
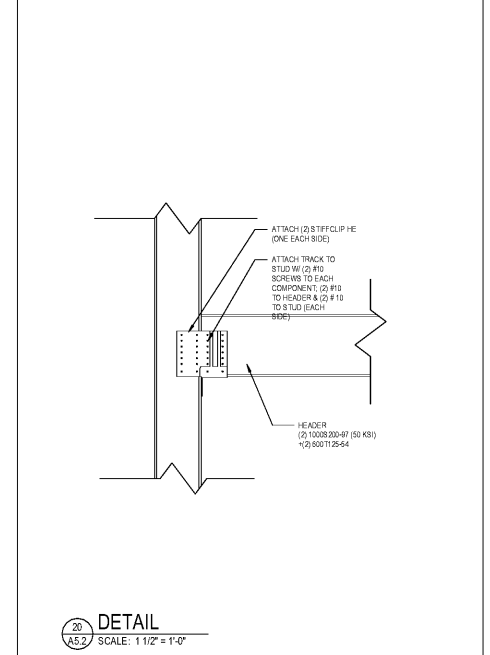


DETAIL
 SCALE: 1/4" = 1'-0"



- Concrete Blocks** - Various designs. Classification: C3 (3 hr). See **Concrete Blocks** category for list of eligible manufacturers.
 - Mortar** - Blocks set in full bed of mortar, non-shrink, of not less than 2-1/4" and not more than 3-1/2" depth of base (measured to 1/2" from corner) (proportioned by volume) and not more than 50 percent hydrated lime (by cement volume). Vertical joints staggered.
 - Portland Cement Slab or Gypsum Plaster** - At least 1/2" in classification if used. Attached to concrete blocks (Item 1).
 - Loose Masonry Fill** - If all core spaces are filled with loose dry expanded slag, expanded clay shale (Rotary Kilm Process), water resistant vermiculite masonry fill insulation, or stone washed perlite loose fill insulation and 1/2" to Class 100.
 - Foamed Plastic** (Optional - Not Shown) - 1-1/2" thick max., all wide (fastening attached to concrete blocks (Item 1)). **The Dow Chemical Co.** - Type Thermax.
- * Bearing the UL Classification Marking

3 HR RATED WALL
DETAIL
 SCALE: 1 1/2" = 1'-0"



BIKE RACKS ARE SUPPLIED AND INSTALLED BY G.C.

ONLY FULL SIZE DETAIL WHEN NOT SHOWN IN CAPS
 DIMENSIONS ON IT DRAWING ARE INCLUDED IN SPEC

Order Plans @ www.wldline.com

THE INFORMATION CONTAINED HEREIN IS THE PROPERTY OF WLDLINE ARCHITECTS, INC. AND IS TO BE USED ONLY FOR THE PROJECT AND SITE SPECIFICALLY IDENTIFIED HEREIN. NO PART OF THIS DOCUMENT IS TO BE REPRODUCED OR TRANSMITTED IN ANY FORM OR BY ANY MEANS, ELECTRONIC OR MECHANICAL, INCLUDING PHOTOCOPYING, RECORDING, OR BY ANY INFORMATION STORAGE AND RETRIEVAL SYSTEM, WITHOUT THE WRITTEN PERMISSION OF WLDLINE ARCHITECTS, INC.