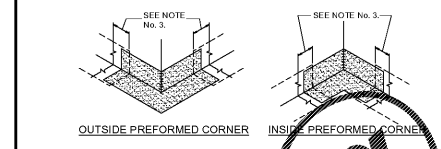


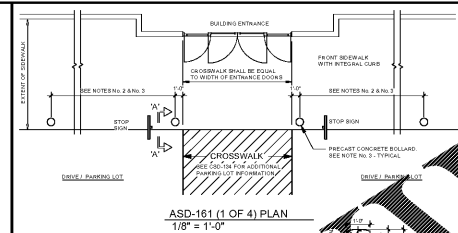
ASD-164 (1 OF 2) WATERPROOFING MEMBRANE FOR RESTROOMS
 3/8" = 1'-0"

- NOTES**
1. PROVIDE WATERPROOFING MEMBRANE POLYETHYLENE MATERIAL ON ALL INTERIOR WALLS OF RESTROOMS ON UPPER LEVEL. TO REDUCE WATER LEAKAGE FROM RESTROOM TO ADJACENT AREAS. SEE KROGER SPECIFICATIONS SECTION 09 30 00 TYP. SET T.I.N.C.
 2. ONCE MEMBRANE HAS BEEN COMPLETELY BONDED - SEAMS, CORNERS & CONNECTIONS - THE FLOOR & WALL TILES MAY BE APPLIED.
 3. OVERLAP WATERPROOFING MEMBRANE BEYOND PRE-FORMED CORNER, ADHERE TO WALL AND FLOOR SURFACES PER MANUFACTURER'S RECOMMENDATIONS.

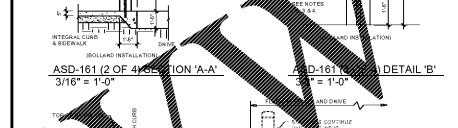


ASD-164 (2 OF 2) CORNER DETAILS
 1" = 1'-0"

WATERPROOFING MEMBRANE FOR RESTROOMS	DATE: 5/18/15
MASTER SPECIFICATION DETAIL	DRAWN: ZAW
ORIGINAL ISSUE DATE: 4/11/07	ASD-164



ASD-161 (1 OF 4) PLAN
 1/8" = 1'-0"

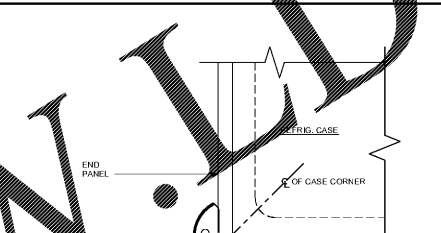


ASD-161 (2 OF 4) SECTION 'A-A'
 3/16" = 1'-0"

ASD-161 (3 OF 4) DETAIL 'B'
 3/16" = 1'-0"

- GENERAL NOTES**
1. UTILIZE FLUSH WALK BOLLARD AS BOLLARD ALONG STONE FRONT. TRANSITION BACK TO CURB AND RETURN CURB TO END OF BOLLARD. SEE DETAIL.
 2. INSTALL 1/2" DIAMETER PRECAST CONCRETE BOLLARDS EQUALLY SPACED AT 8'-0" TO 10'-0" ON CENTER UNTIL THE TRANSITION TO A.P. CURB IS APPLICABLE. LOCATE FIRST.
 3. PRECAST CONCRETE BOLLARDS, SEE SPEC. CONTRACTOR SUPPLIED AND INSTALLED.
 4. PRECAST CONCRETE BOLLARDS TO INCLUDE COMB TOP. IF METAL BARS BLAST FINISH WITH 2" PROTECT FOR REBAR DOWN.
 5. PRECAST CONCRETE BOLLARDS TO BE INSTALLED IN BOLLARD WELLS BY 4" REBAR CORREL, REINFORCED WITH 1" EXPOSED. SHALL BASE TO SUBGRADE.
 6. PAINT TRANSITION AND P. CURB YELLOW. SEE SPECIFICATIONS.
 7. SEE SPECIFICATION SECTION 32 17 00 - PAINTING SPECIALTIES FOR MORE INFORMATION.

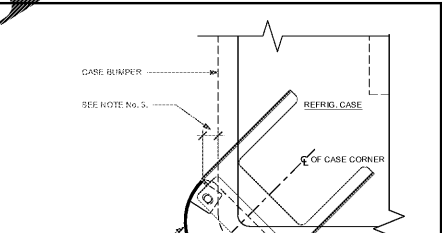
FLUSH WALK AT PEDESTRIAN CROSSING	DATE: 11/23/15
MASTER SPECIFICATION DETAIL	DRAWN: ZAW
ORIGINAL ISSUE DATE: 8/14/06	ASD-161



ASD-160A GLASS DOOR END CASE CORNER GUARD
 3/8" = 1'-0"

- NOTES**
1. DESIGNED FOR USE WITH GLASS DOOR END CASES. CASE CORNER GUARD. REFER TO SECTION 11.41.13 PARAGRAPH 2.2 B GENERAL STORE FIXTURE INSTALLATION SPECIFICATIONS. REFER TO FIXTURE PLAN FOR QUANTITIES AND LOCATIONS.
 2. CASE CORNER GUARD TO BE INSTALLED AFTER CASE HAS BEEN SET. INSTALL CASE GUARD AS CLOSE TO CASE AS POSSIBLE PER MANUFACTURER'S INSTALLATION INSTRUCTIONS.

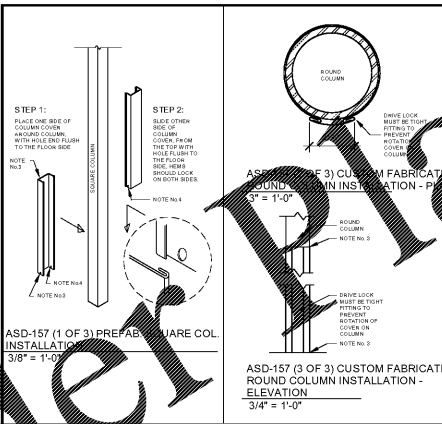
GLASS DOOR END CASE CORNER GUARD	DATE: 6/5/15
MASTER SPECIFICATION DETAIL	DRAWN: ZAW
ORIGINAL ISSUE DATE: 6/5/15	ASD-160A



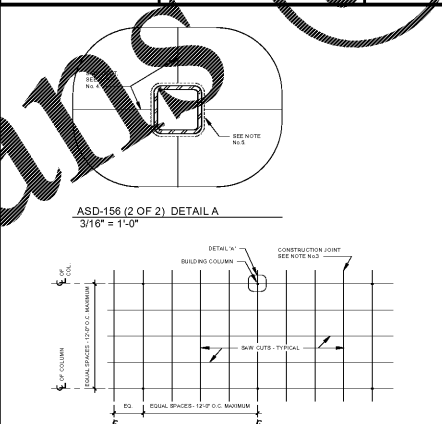
ASD-160 REFRIGERATED CASE CORNER GUARD
 3/8" = 1'-0"

- NOTES**
1. DESIGNED FOR USE WITH ISLAND REFRIGERATED CASES (WITH STRAIGHT FRONTS) IN ENTRY, MEAT, SEAFOOD AND DELI DEPARTMENTS. CASE CORNER GUARD. REFER TO SECTION 11.41.13 PARAGRAPH 2.2 B GENERAL STORE FIXTURE INSTALLATION SPECIFICATIONS. REFER TO FIXTURE PLAN FOR QUANTITIES AND LOCATIONS.
 2. CASE CORNER GUARD TO BE INSTALLED AFTER CASE HAS BEEN SET. INSTALL CASE GUARD (AND FLANGE EXTENSION) AS CLOSE TO CASE AS POSSIBLE PER MANUFACTURER'S INSTALLATION INSTRUCTIONS.
 3. MAXIMUM 1" PER MANUFACTURER'S INSTALLATION INSTRUCTIONS.
 4. FOR CASES WITH SHALLOW TOE NOSE IT MAY BE NECESSARY TO FIELD CUT FLANGE FOR PROPER POSITIONING OF GUARD.

REFRIGERATED CASE CORNER GUARD	DATE: 6/5/15
MASTER SPECIFICATION DETAIL	DRAWN: ZAW
ORIGINAL ISSUE DATE: 7/6/06	ASD-160



ASD-157 (1 OF 3) PREFAB. WARE COL. INSTALLATION
 3/8" = 1'-0"



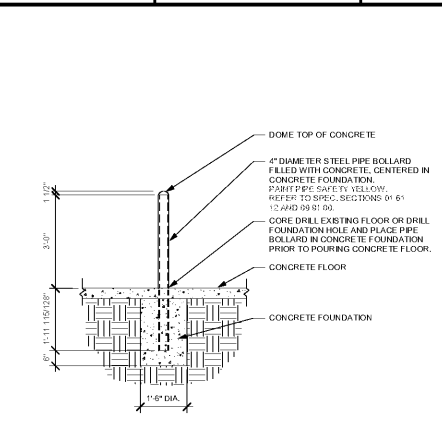
ASD-156 (2 OF 2) DETAIL
 3/16" = 1'-0"

- NOTES**
1. PATTERN TO BE CONTINUOUS THROUGHOUT SALES AREA.
 2. FOR JOINT FILLER COLUMN, SEE BUILDING SPECIFICATIONS.
 3. BAR OUT CONSTRUCTION JOINTS. 1/2" WIDTH JOINT. JOINT DEPTH 1/4" THE BAR THICKNESS ON A MINIMUM OF 1".
 4. USE FORMER CONCRETE BAR TO TOP. JOINTS AS CLOSE AS POSSIBLE TO COLUMN ON WALL FACE.
 5. FORM CONCRETE COVER TO COLUMN ON WALL FACE WITH HAND COMPACT. BRUSH AND SCREED BAR.
 6. SUCCESSFULLY USE CONCRETE PATTERN TO FORM COLUMN. INSTALL JOINT FILLER. SEE BUILDING SPECIFICATIONS.

SALES AREA COLUMN COVERS	DATE: 11/15/17
MASTER SPECIFICATION DETAIL	DRAWN: ZAW
ORIGINAL ISSUE DATE: 7/15/06	ASD-157

- NOTES**
1. PATTERN TO BE CONTINUOUS THROUGHOUT SALES AREA.
 2. FOR JOINT FILLER COLUMN, SEE BUILDING SPECIFICATIONS.
 3. BAR OUT CONSTRUCTION JOINTS. 1/2" WIDTH JOINT. JOINT DEPTH 1/4" THE BAR THICKNESS ON A MINIMUM OF 1".
 4. USE FORMER CONCRETE BAR TO TOP. JOINTS AS CLOSE AS POSSIBLE TO COLUMN ON WALL FACE.
 5. FORM CONCRETE COVER TO COLUMN ON WALL FACE WITH HAND COMPACT. BRUSH AND SCREED BAR.
 6. SUCCESSFULLY USE CONCRETE PATTERN TO FORM COLUMN. INSTALL JOINT FILLER. SEE BUILDING SPECIFICATIONS.

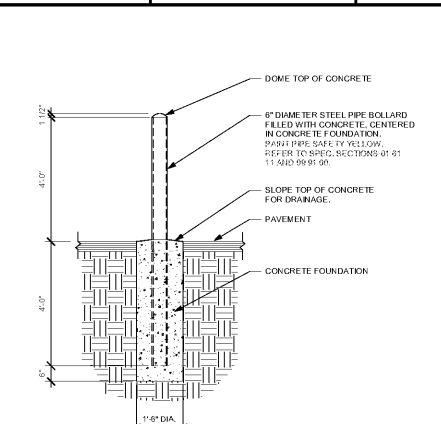
CONCRETE PATTERN TYP. FOR POLISHED CONCRETE SALES AREA FLOORS	DATE: 11/23/14
MASTER SPECIFICATION DETAIL	DRAWN: ZAW
ORIGINAL ISSUE DATE: 11/15/05	ASD-156



ASD-154A INTERIOR STEEL BOLLARD DETAIL
 1/2" = 1'-0"

- NOTES**
1. PATTERN TO BE CONTINUOUS THROUGHOUT SALES AREA.
 2. FOR JOINT FILLER COLUMN, SEE BUILDING SPECIFICATIONS.
 3. BAR OUT CONSTRUCTION JOINTS. 1/2" WIDTH JOINT. JOINT DEPTH 1/4" THE BAR THICKNESS ON A MINIMUM OF 1".
 4. USE FORMER CONCRETE BAR TO TOP. JOINTS AS CLOSE AS POSSIBLE TO COLUMN ON WALL FACE.
 5. FORM CONCRETE COVER TO COLUMN ON WALL FACE WITH HAND COMPACT. BRUSH AND SCREED BAR.
 6. SUCCESSFULLY USE CONCRETE PATTERN TO FORM COLUMN. INSTALL JOINT FILLER. SEE BUILDING SPECIFICATIONS.

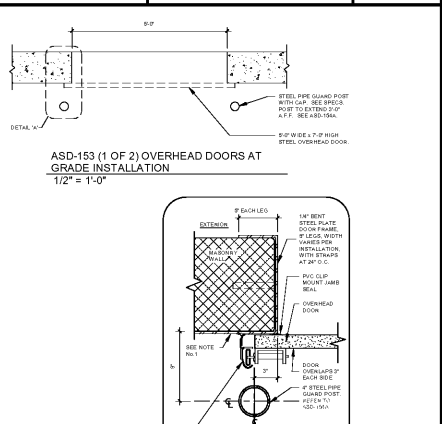
INTERIOR STEEL BOLLARD DETAIL	DATE: 12/8/16
MASTER SPECIFICATION DETAIL	DRAWN: ZAW
ORIGINAL ISSUE DATE: 7/29/14	ASD-154A



ASD-154 EXTERIOR STEEL BOLLARD DETAIL
 1/2" = 1'-0"

- NOTES**
1. PATTERN TO BE CONTINUOUS THROUGHOUT SALES AREA.
 2. FOR JOINT FILLER COLUMN, SEE BUILDING SPECIFICATIONS.
 3. BAR OUT CONSTRUCTION JOINTS. 1/2" WIDTH JOINT. JOINT DEPTH 1/4" THE BAR THICKNESS ON A MINIMUM OF 1".
 4. USE FORMER CONCRETE BAR TO TOP. JOINTS AS CLOSE AS POSSIBLE TO COLUMN ON WALL FACE.
 5. FORM CONCRETE COVER TO COLUMN ON WALL FACE WITH HAND COMPACT. BRUSH AND SCREED BAR.
 6. SUCCESSFULLY USE CONCRETE PATTERN TO FORM COLUMN. INSTALL JOINT FILLER. SEE BUILDING SPECIFICATIONS.

EXTERIOR STEEL BOLLARD DETAIL	DATE: 12/8/16
MASTER SPECIFICATION DETAIL	DRAWN: ZAW
ORIGINAL ISSUE DATE: 7/29/14	ASD-154



ASD-153 (1 OF 2) OVERHEAD DOORS AT GRADE INSTALLATION
 1/2" = 1'-0"

- NOTES**
1. BOLLARD SHALL BE INSTALLED IN SECTIONAL AND STEEL DOOR.

OVERHEAD DOOR AT GRADE INSTALLATION	DATE: 6/5/15
MASTER SPECIFICATION DETAIL	DRAWN: ZAW
ORIGINAL ISSUE DATE: 2/20/14	ASD-153

SALES AREA COLUMN COVERS	DATE: 11/15/17
MASTER SPECIFICATION DETAIL	DRAWN: ZAW
ORIGINAL ISSUE DATE: 7/15/06	ASD-157

CONCRETE PATTERN TYP. FOR POLISHED CONCRETE SALES AREA FLOORS	DATE: 11/23/14
MASTER SPECIFICATION DETAIL	DRAWN: ZAW
ORIGINAL ISSUE DATE: 11/15/05	ASD-156

INTERIOR STEEL BOLLARD DETAIL	DATE: 12/8/16
MASTER SPECIFICATION DETAIL	DRAWN: ZAW
ORIGINAL ISSUE DATE: 7/29/14	ASD-154A

EXTERIOR STEEL BOLLARD DETAIL	DATE: 12/8/16
MASTER SPECIFICATION DETAIL	DRAWN: ZAW
ORIGINAL ISSUE DATE: 7/29/14	ASD-154

OVERHEAD DOOR AT GRADE INSTALLATION	DATE: 6/5/15
MASTER SPECIFICATION DETAIL	DRAWN: ZAW
ORIGINAL ISSUE DATE: 2/20/14	ASD-153

OWNER

DATE: 8/30/15
 11/23/15: 80% OWNER REVIEW
 11/01/16: 100% PERMIT

DATE	REVISION
------	----------

PROJECT TITLE

KROGER STORE R543

1959 W. Mercury Blvd.
 Hampton, VA 23066

COMMISSION NO: 518344
 ISSUE DATE: 11/01/18

SHEET TITLE

ARCHITECTURAL STANDARD DETAILS (ASD)

SHEET NO.

A5.1.4