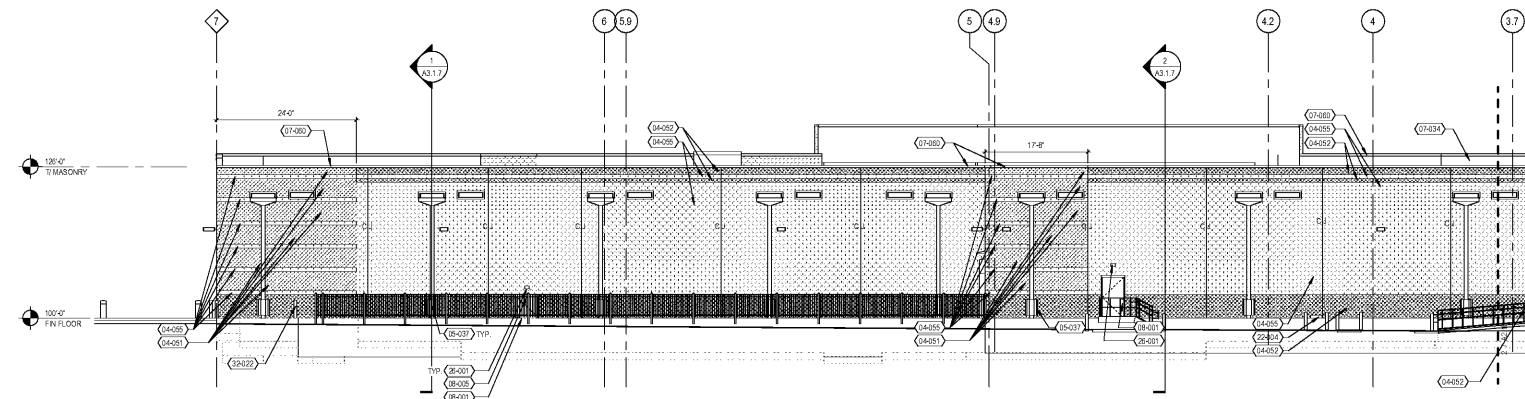


GENERAL NOTES

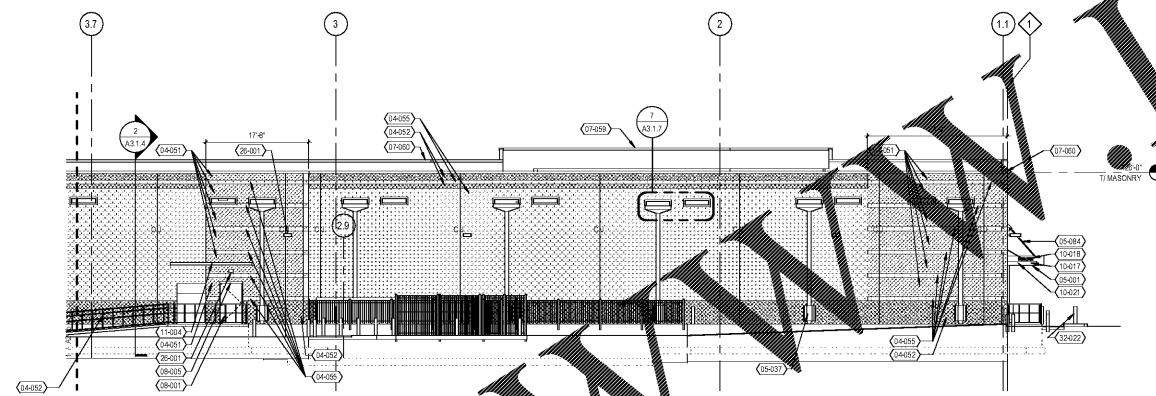
1. CLEAN SURFACES TO BE PAINTED. PROTECT ALL SURFACES NOT INTENDED TO BE PAINTED THAT ARE ADJACENT TO, OR IN CLOSE PROXIMITY TO THE SURFACES, PRIOR TO & DURING THE APPLICATION OF PAINT.
2. REFER TO FIBS.1 FOR CONTROL JOINT DETAILS.
3. REFER TO WALL SECTIONS FOR INSULATED MASONRY.
4. REFER TO AS1 SERIES SHEETS FOR ARCHITECTURAL STANDARD DETAILS (ASD).
5. REFER TO SHEET A3.1.8 FOR TYPICAL FIBER CEMENT PANEL DETAILS.
6. COORDINATE WITH AHJ AND FIRE MARSHAL FOR PLACEMENT OF STREET ADDRESS.

KEYNOTES

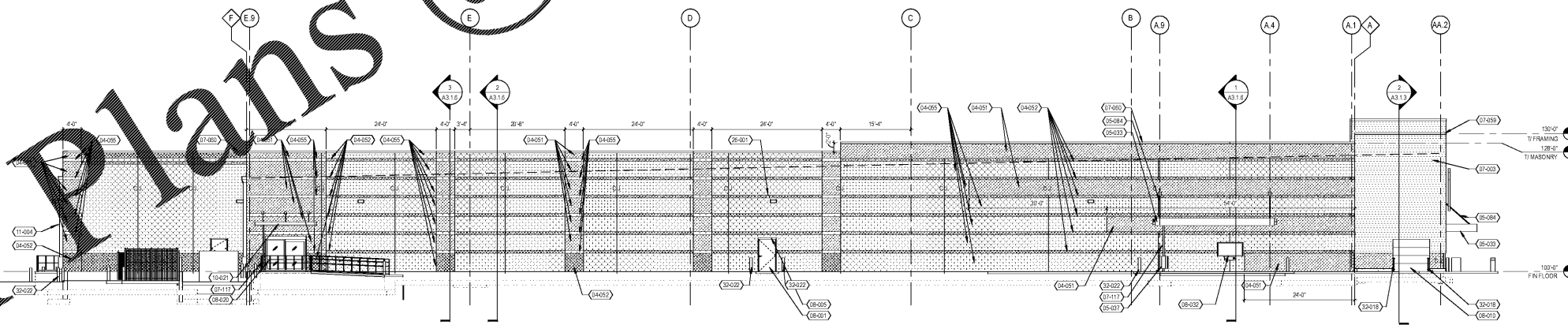
- 04-051 DECORATIVE CONCRETE BLOCK UNIT MASONRY - GROUND FACE, BL-01, 8"
- 04-052 DECORATIVE CONCRETE BLOCK UNIT MASONRY - SPLIT FACE, BL-02
- 04-053 DECORATIVE CONCRETE BLOCK UNIT MASONRY, BL-03 U.N.D.
- 05-001 STRUCTURAL STEEL FRAMING RE: STRUCTURAL DRAWINGS
- 05-003 PAINTED STEEL CANDY FASCIA, PT-07
- 05-007 1/4" STEEL DOWNPOUT GUARD, PT-08, RE: ASD-08
- 05-004 STEEL ROD WITH GLASS BACKING, PT-01, RE: STRUCTURAL DRAWINGS
- 07-003 HORIZONTAL FIBER CEMENT PANELS, RE: SPECIFICATION, ASD
- 07-004 MECHANICALLY FASTENED TPO MEMBRANE ROOF, RE: SPECIFICATION, ASD
- PLUMB ASSESS. & ADJ. RE: PLUMBING DRAWINGS
- 07-009 PREFINISHED METAL COPING, MC-02 U.N.D.
- 07-003 PREFINISHED METAL COPING, MC-02 U.N.D.
- 07-009 PREFINISHED METAL COPING, MC-02 U.N.D.
- 01-011 PREFINISHED METAL COPING, MC-02 U.N.D. RE: PLUMBING DRAWINGS
- 08-001 HOLLOW METAL FRAMING, RE: ASD-1, DOORWAY DETAILS + SCHEDULES
- 08-005 1" DRIP EDGE, RE: PLUMBING DRAWINGS
- 08-003 1/2" DRIP EDGE, RE: PLUMBING DRAWINGS
- 08-002 3/4" DRIP EDGE, RE: PLUMBING DRAWINGS
- 08-001 1" DRIP EDGE, RE: PLUMBING DRAWINGS
- 08-004 1/2" DRIP EDGE, RE: PLUMBING DRAWINGS
- 08-003 3/4" DRIP EDGE, RE: PLUMBING DRAWINGS
- 08-002 1" DRIP EDGE, RE: PLUMBING DRAWINGS
- 08-001 1 1/2" DRIP EDGE, RE: PLUMBING DRAWINGS
- 08-004 1/2" DRIP EDGE, RE: PLUMBING DRAWINGS
- 08-003 3/4" DRIP EDGE, RE: PLUMBING DRAWINGS
- 08-002 1" DRIP EDGE, RE: PLUMBING DRAWINGS
- 08-001 1 1/2" DRIP EDGE, RE: PLUMBING DRAWINGS
- 08-004 1/2" DRIP EDGE, RE: PLUMBING DRAWINGS
- 08-003 3/4" DRIP EDGE, RE: PLUMBING DRAWINGS
- 08-002 1" DRIP EDGE, RE: PLUMBING DRAWINGS
- 08-001 1 1/2" DRIP EDGE, RE: PLUMBING DRAWINGS



1 NORTH ELEVATION - EAST END  
SCALE: 3/32" = 1'-0"



2 NORTH ELEVATION - WEST END  
SCALE: 3/32" = 1'-0"



3 WEST ELEVATION  
SCALE: 3/32" = 1'-0"

EXECUTED BY: GB  
REVIEWED BY: AF

1000 W. 10th Street, Suite 200  
Seattle, WA 98101  
PH: 206.468.4949  
WWW.Z-ARCHITECTS.COM

**z** architecture + design

creating extraordinary places  
www.z-architects.com  
206.468.4949

CONSULTANTS

OWNER

**Kroger**

DATE: 03/18  
12/22/18 90% OWNER REVIEW  
11/01/20 100% BID PERMIT

DATE	REVISION

PROJECT TITLE  
**KROGER STORE  
R543**

1059 W. Mercury Blvd.  
Hampton, VA 23066

COMMISSION NO: 518344  
SHEET DATE: 11/01/18

SHEET TITLE  
**EXTERIOR  
ELEVATIONS**

SHEET NO:  
**A2.1b**

Order Plans @

THIS DOCUMENT IS THE PROPERTY OF Z-ARCHITECTS, INC. AND IS NOT TO BE REPRODUCED, COPIED, OR USED FOR ANY OTHER PROJECT WITHOUT THE WRITTEN PERMISSION OF Z-ARCHITECTS, INC. DATE: 11/01/18 11:00:18 AM