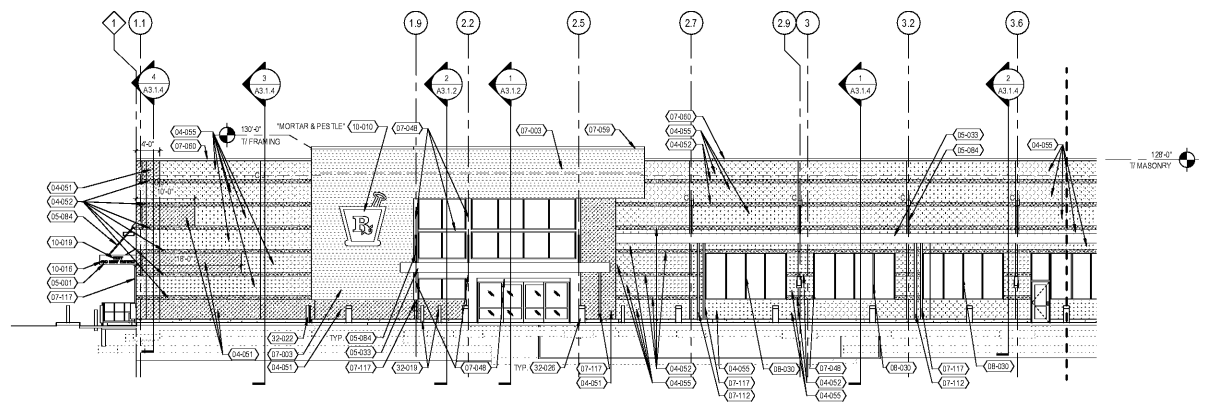


GENERAL NOTES

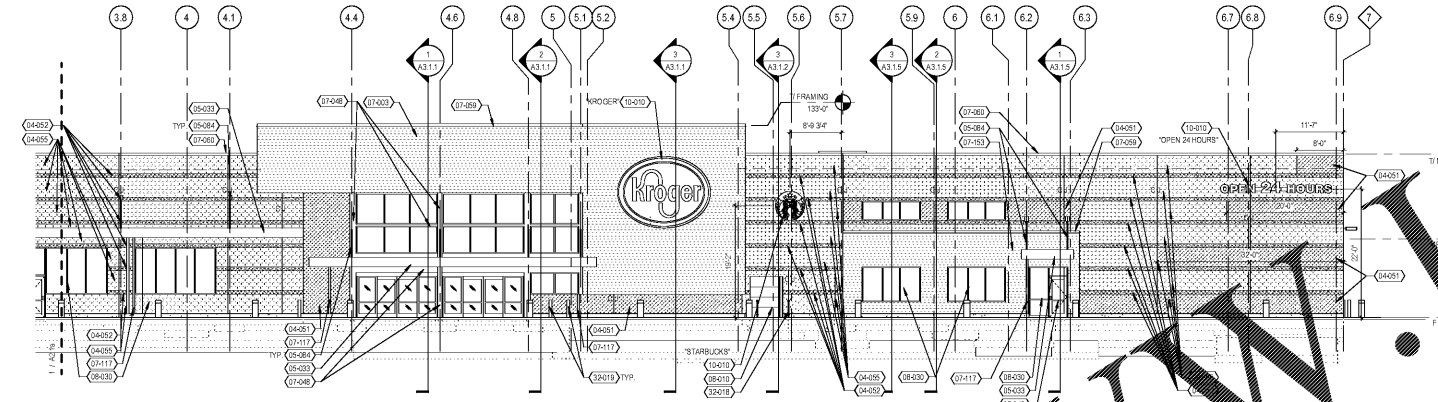
1. CLEAN SURFACES TO BE PAINTED. PROTECT ALL SURFACES NOT INTENDED TO BE PAINTED THAT ARE ADJACENT TO, OR IN CLOSE PROXIMITY TO THE SURFACES, PRIOR TO & DURING THE APPLICATION OF PAINT.
2. REFER TO FIBS.1 FOR CONTROL JOINT DETAILS.
3. REFER TO WALL SECTIONS FOR INSULATED MASONRY.
4. REFER TO AS-1 SERIES SHEETS FOR ARCHITECTURAL STANDARD DETAILS (ASD).
5. REFER TO SHEET A3.1.8 FOR TYPICAL FIBER CEMENT PANEL DETAILS.
6. COORDINATE WITH A4.1 AND F.1 FOR PLACE OF STREET ADDRESS.

KEYNOTES

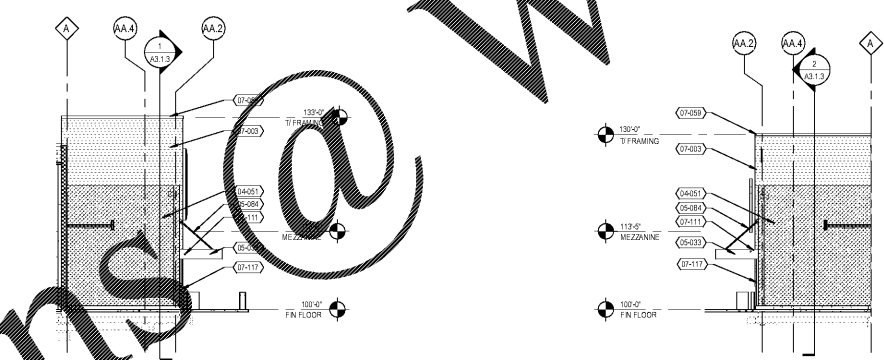
- 04-051 DECORATIVE CONCRETE BLOCK UNIT MASONRY - GROUND FACE, BL-05, 8" UNITS, PLANING BOND
- 04-052 DECORATIVE CONCRETE BLOCK UNIT MASONRY - SPLIT FACE, BL-02
- 04-055 DECORATIVE CONCRETE BLOCK UNIT MASONRY, BL-03 U.N.D.
- 04-051 STRUCTURAL STEEL FRAMING, RE: STRUCTURAL DRAWINGS
- 05-033 PAINTED STEEL GANTRY, FAS-01, P-01
- 05-084 STEEL ROD WITH CLEVIS EACH END, P-07, RE: STRUCTURAL DRAWINGS
- 07-003 HORIZONTAL FIBER CEMENT PANELS, RE: SPECIFICATION, S-02
- 07-046 BRASS METAL COVER TO MATCH FRAME COLOR, SET IN 1/2" DEPTH 1610 EXPLODED FAB TENSERS MATCH MC-01
- 07-029 PREFINISHED METAL COPING, MC-02 U.N.D.
- 07-030 PREFINISHED METAL COPING, MC-01 U.N.D.
- 07-111 OVERFLOW PIPE THROUGH ROOF, ALL AROUND EACH END
- 07-112 PREFINISHED METAL COPING, MC-01 U.N.D., MC-01 DRAIN TO DOWNSPOUT
- 07-117 PREFINISHED METAL COPING, MC-01, RE: PLUMBING DRAWINGS FOR SIZE AND CONTINUATION
- 07-153 HORIZONTAL METAL COPING WITH HOOD FINISH, RE: SPECIFICATION, S-02
- 08-010 VERTICAL SECTION THROUGH DOOR AND GLIDE, BL-02 U.N.D.
- 08-030 3/4" ALUMINUM INTERFRONT FINISHING SYSTEM, AS-01
- 08-031 BRASS METAL COVER TO MATCH FRAME COLOR, SET IN 1/2" DEPTH 1610 EXPLODED FAB TENSERS MATCH MC-01
- 11-001 NON-ILLUMINATED SURFACE, EXPOSED, DO NOT ENTER SIGNAGE
- 11-002 ILLUMINATED SURFACE, EXPOSED, PROVIDED BY KROGER, INSTALLED BY CONTRACTOR, RE: ELECTRICAL DRAWINGS
- 11-003 SIGN LEVEL, RE: ASD-15 AND STRUCTURAL DRAWINGS
- 11-004 SIGN HOOD, 18" WIDE U.N.D.
- 11-005 LIGHT FIXTURE, RE: ELECTRICAL DRAWINGS
- 20-019 ENTRANCE DOOR ROLLER POST, GE-01, RE: ASD-20
- 20-019 SKE RACK, RE: 1965.2
- 20-022 8" STEEL PIPE BOLLARD (GLASS CONCRETE FILLED), RE: ASD-154
- 20-026 PRECAST CONCRETE BOLLARD, RE: ASD-161
- 20-030 SET OF WHEEL CHOCKS, RE: FUTURE PLAN



1 SOUTH ELEVATION - WEST END
SCALE: 3/32" = 1'-0"

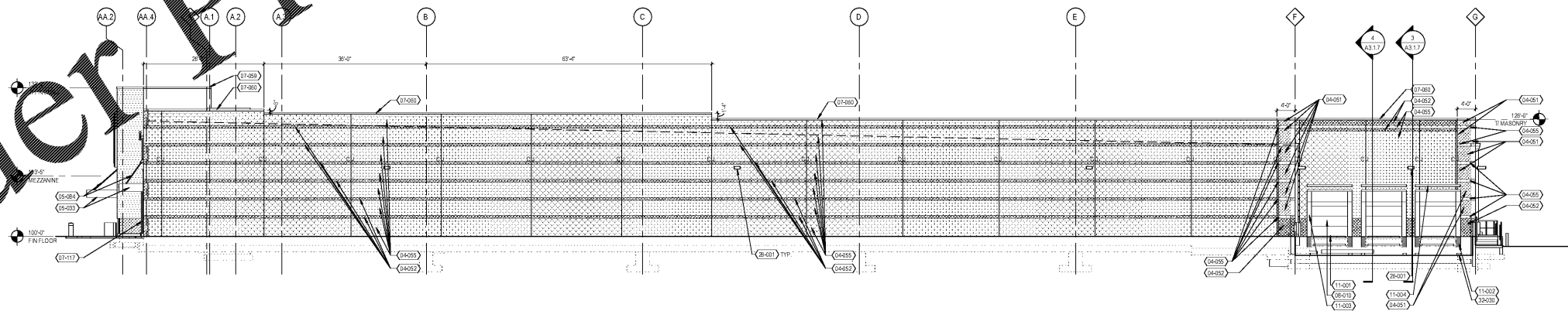


2 SOUTH ELEVATION - EAST END
SCALE: 3/32" = 1'-0"



3 WEST SIDE OF (MAIN) ENTRY
SCALE: 3/32" = 1'-0"

4 EAST SIDE OF (SECONDARY) ENTRY
SCALE: 3/32" = 1'-0"



5 EAST ELEVATION
SCALE: 3/32" = 1'-0"

EXCUT BY: GB
REVIEWED BY: AF

000 W. Mercury Blvd., Suite 200, Hampton, VA 23066
 703.426.1100
 703.426.1101
 703.426.1102
 703.426.1103
 703.426.1104
 703.426.1105
 703.426.1106
 703.426.1107
 703.426.1108
 703.426.1109
 703.426.1110

www.zachry.com
303.459.4949

architecture + design

OWNER

DATE: 03/18
 10/28/18 90% OWNER REVIEW
 11/01/18 100% BID PERMIT

DATE	REVISION

PROJECT TITLE

**KROGER STORE
R543**

1050 W. Mercury Blvd.
Hampton, VA 23066

COMMISSION NO: 518344
 ISSUE DATE: 11/01/18
 SHEET TITLE: EXTERIOR ELEVATIONS

SHEET NO:

A2.1a

THIS DOCUMENT IS THE PROPERTY OF ZACHRY GROUP, INC. IT IS TO BE USED ONLY FOR THE PROJECT AND SITE SPECIFICALLY IDENTIFIED HEREIN. IT IS NOT TO BE REPRODUCED, COPIED, OR USED FOR ANY OTHER PROJECT WITHOUT THE WRITTEN PERMISSION OF ZACHRY GROUP, INC.