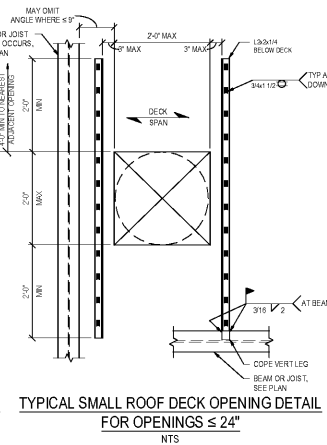
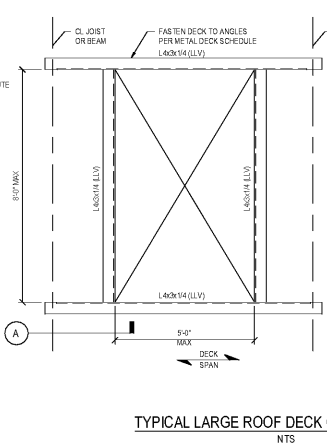


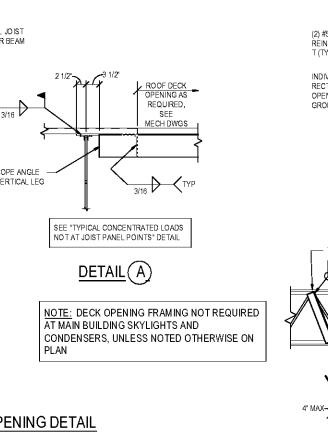
TYPICAL SMALL ROOF DECK OPENING DETAIL FOR OPENINGS ≤ 12" NTS



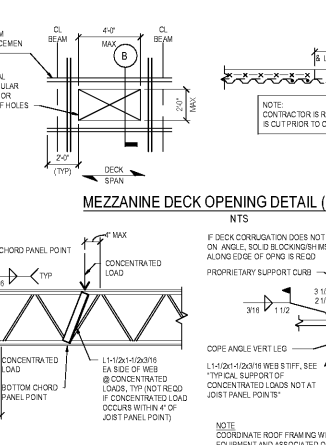
TYPICAL SMALL ROOF DECK OPENING DETAIL FOR OPENINGS ≤ 24" NTS



TYPICAL LARGE ROOF DECK OPENING DETAIL NTS

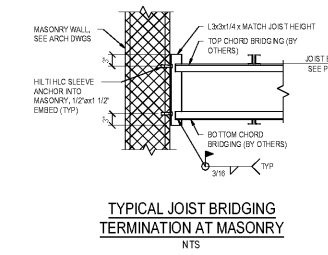


TYPICAL SUPPORT OF CONCENTRATED LOADS NOT AT JOIST PANEL POINTS NTS

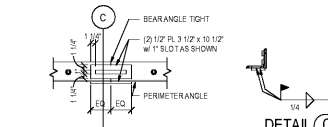


TYPICAL ROOF MECHANICAL UNIT SUPPORT NTS

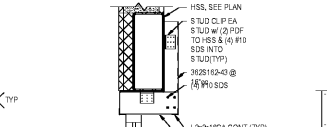
METAL DECK SCHEDULE			
MARK	SIZE/PROPERTIES	PROFILE/ATTACHMENT	FASTENERS
B4	TYPE: 1 1/2" WIDE RIB ROOF DECK GA: 22GA F/M/N: 30/45 AND ROOFS	3" COVERAGE SHEET COVER WIDTH SUPPORT FASTENERS AT SHEET END LAPS, AT WALLS AND BEAM LINES WITH AXIAL LOADS SUPPORT FASTENERS BETWEEN SHEET LAPS AT SUPPORTING STRUCTURE	SUPPORT FASTENERS: #10 SDS @ 12" S/D SIDE LAP: (1) #10 SDS PER SPAN
B4	TYPE: 1 1/2" WIDE RIB ROOF DECK GA: 22GA F/M/N: 30/45 AND ROOFS	3" COVERAGE SHEET COVER WIDTH SUPPORT FASTENERS AT SHEET END LAPS, AT WALLS AND BEAM LINES WITH AXIAL LOADS SUPPORT FASTENERS BETWEEN SHEET LAPS AT SUPPORTING STRUCTURE	SUPPORT FASTENERS: #10 SDS @ 12" S/D SIDE LAP: (1) #10 SDS PER SPAN
B4	TYPE: 1 1/2" WIDE RIB ROOF DECK GA: 22GA F/M/N: 30/45 AND ROOFS	3" COVERAGE SHEET COVER WIDTH SUPPORT FASTENERS AT SHEET END LAPS, AT WALLS AND BEAM LINES WITH AXIAL LOADS SUPPORT FASTENERS BETWEEN SHEET LAPS AT SUPPORTING STRUCTURE	SUPPORT FASTENERS: #10 SDS @ 12" S/D SIDE LAP: (1) #10 SDS PER SPAN
B4	TYPE: 1 1/2" WIDE RIB ROOF DECK GA: 22GA F/M/N: 30/45 AND ROOFS	3" COVERAGE SHEET COVER WIDTH SUPPORT FASTENERS AT SHEET END LAPS, AT WALLS AND BEAM LINES WITH AXIAL LOADS SUPPORT FASTENERS BETWEEN SHEET LAPS AT SUPPORTING STRUCTURE	SUPPORT FASTENERS: #10 SDS @ 12" S/D SIDE LAP: (1) #10 SDS PER SPAN
N1	TYPE: 7' 0" RIB ROOF DECK GA: 22GA F/M/N: 30/45 AND ROOFS	3" COVERAGE SHEET COVER WIDTH SUPPORT FASTENERS AT SHEET END LAPS, AT WALLS AND BEAM LINES WITH AXIAL LOADS SUPPORT FASTENERS BETWEEN SHEET LAPS AT SUPPORTING STRUCTURE	SUPPORT FASTENERS: #10 SDS @ 12" S/D SIDE LAP: (1) #10 SDS PER SPAN
FD4	TYPE: 7' 0" RIB ROOF DECK GA: 22GA F/M/N: 30/45 AND ROOFS	3" COVERAGE SHEET COVER WIDTH SUPPORT FASTENERS AT SHEET END LAPS, AT WALLS AND BEAM LINES WITH AXIAL LOADS SUPPORT FASTENERS BETWEEN SHEET LAPS AT SUPPORTING STRUCTURE	SUPPORT FASTENERS: #10 SDS @ 12" S/D SIDE LAP: (1) #10 SDS PER SPAN



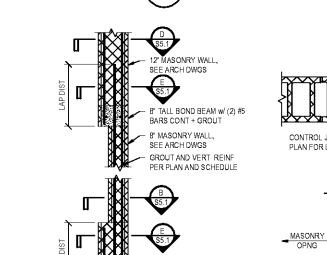
TYPICAL JOIST BRIDGING TERMINATION AT MASONRY NTS



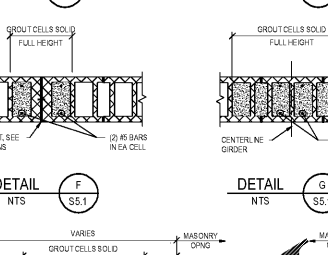
TYPICAL ROOF PERIMETER ANGLE SPLICE DETAIL NTS



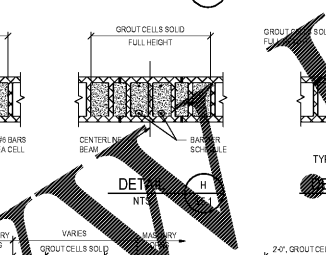
TYPICAL LINTEL-STOREFRONT VERTICAL OFFSET CONNECTION 3/4" = 1'-0" NTS



TYPICAL MASONRY WALL THICKNESS TRANSITION NTS



TYPICAL MCJ CONSTRUCTION AT MASONRY OPENINGS NTS



TYPICAL HSS BEAM TO COL CONNECTION 3/4" = 1'-0" NTS

MASONRY WALL REINFORCING SCHEDULE			
MARK	VERTICAL REINFORCING BAR SIZE @ SPA	CRU SIZE	DETAIL
MS1	#5 @ 48" CENTERED	12	MS1
MS2	#5 @ 48" CENTERED	12	MS2
MS3	#5 @ 18" CENTERED	8	MS3

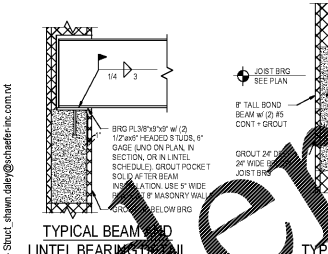
CFS MEMBER DESIGNATION	
FLANGE WIDTH IN 1000'S OF AN INCH (E.G. 150 = 150")	MATERIAL THICKNESS IN 1000'S OF AN INCH (E.G. .030 = .030")
25 = 25"	1 = 1"
40 = 40"	1 = 1"
50 = 50"	1 = 1"
60 = 60"	1 = 1"
75 = 75"	1 = 1"
100 = 100"	1 = 1"

LINTEL SCHEDULE		
MARK	DETAIL	DESCRIPTION
MS1	MS1	2" TALL BOND BEAM W/ (2) #5 BOTTOM
MS2	MS2	2" TALL BOND BEAM W/ (2) #5 BOTTOM
MS3	MS3	2" TALL BOND BEAM W/ (2) #5 BOTTOM
MS4	MS4	2" TALL BOND BEAM W/ (2) #5 BOTTOM
MS5	MS5	2" TALL BOND BEAM W/ (2) #5 BOTTOM
MS6	MS6	2" TALL BOND BEAM W/ (2) #5 BOTTOM
MS7	MS7	2" TALL BOND BEAM W/ (2) #5 BOTTOM
MS8	MS8	2" TALL BOND BEAM W/ (2) #5 BOTTOM
MS9	MS9	2" TALL BOND BEAM W/ (2) #5 BOTTOM
MS10	MS10	2" TALL BOND BEAM W/ (2) #5 BOTTOM

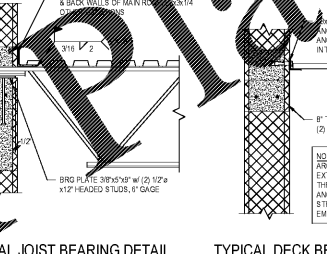
FOOTING SCHEDULE (ISOLATED FOOTINGS)			
WT	LENGTH	WIDTH	THICK
40	4'-0"	4'-0"	1'-0"
45	4'-6"	4'-6"	1'-0"
50	5'-0"	5'-0"	1'-0"
55	5'-6"	5'-6"	1'-0"
60	6'-0"	6'-0"	1'-0"
65	6'-6"	6'-6"	1'-0"
70	7'-0"	7'-0"	1'-0"
75	7'-6"	7'-6"	1'-0"
80	8'-0"	8'-0"	1'-0"
85	8'-6"	8'-6"	1'-0"

COLUMN SCHEDULE	
MARK	COLUMN SIZE
C1	HSS16x30
C2	HSS16x30
C3	HSS16x30
C4	HSS16x30
C5	HSS16x30
C6	HSS16x30
C7	HSS16x30
C8	HSS16x30
C9	HSS16x30
C10	HSS16x30

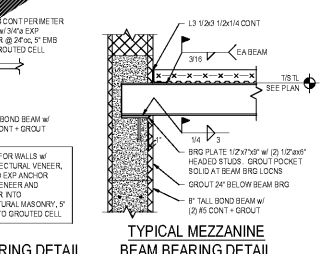
GRADE BEAM SCHEDULE			
MARK	WIDTH	DEPTH	REINFORCING
GB1	3'-0"	3'-0"	(4) #5 CONT TOP & BOT
GB2	3'-0"	3'-0"	(4) #5 CONT TOP & BOT



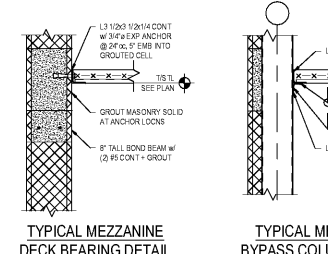
TYPICAL BEAM AND LINTEL BEARING DETAIL NTS



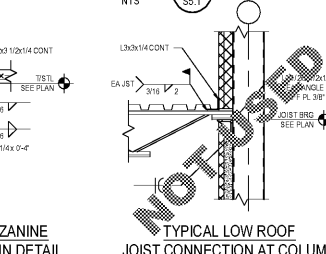
TYPICAL JOIST BEARING DETAIL NTS



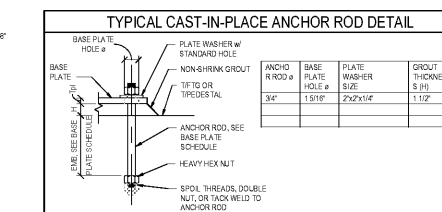
TYPICAL DECK BEARING DETAIL NTS



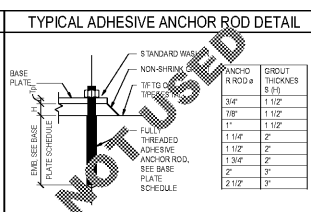
TYPICAL MEZZANINE BEAM BEARING DETAIL NTS



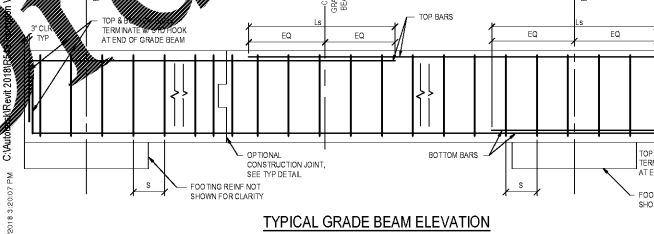
TYPICAL MEZZANINE DECK BEARING DETAIL NTS



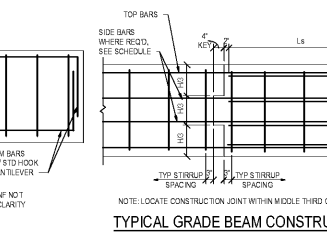
TYPICAL CAST-IN-PLACE ANCHOR ROD DETAIL



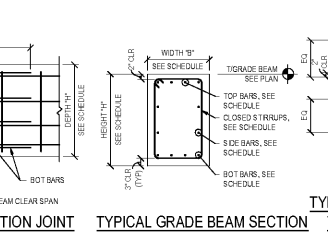
TYPICAL ADHESIVE ANCHOR ROD DETAIL



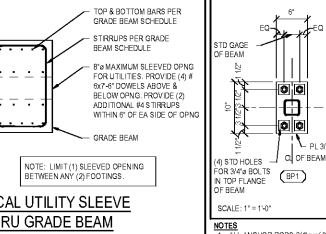
TYPICAL GRADE BEAM ELEVATION NTS



TYPICAL GRADE BEAM CONSTRUCTION JOINT NTS



TYPICAL GRADE BEAM SECTION THRU GRADE BEAM NTS



TYPICAL UTILITY SLEEVE THRU GRADE BEAM NTS

BASE PLATE SCHEDULE			
MARK	WIDTH	DEPTH	REINFORCING
BP1	1'-0"	1'-0"	(4) #5 CONT TOP & BOT
BP2	1'-0"	1'-0"	(4) #5 CONT TOP & BOT
BP3	1'-0"	1'-0"	(4) #5 CONT TOP & BOT
BP4	1'-0"	1'-0"	(4) #5 CONT TOP & BOT
BP5	1'-0"	1'-0"	(4) #5 CONT TOP & BOT
BP6	1'-0"	1'-0"	(4) #5 CONT TOP & BOT
BP7	1'-0"	1'-0"	(4) #5 CONT TOP & BOT
BP8	1'-0"	1'-0"	(4) #5 CONT TOP & BOT
BP9	1'-0"	1'-0"	(4) #5 CONT TOP & BOT
BP10	1'-0"	1'-0"	(4) #5 CONT TOP & BOT

Order Plans

11/10/2018 1:20:07 PM C:\Users\lshaw\OneDrive\Documents\182912 v18 - Sheet_1.dwg schaefer.com

182912 v18 - Sheet_1.dwg schaefer.com

DATE: 11/01/2018
ISSUE: 100% OWNER REVIEW
11/01/2018 100% / PERMIT

DATE: REVISION

PROJECT TITLE: Kroger Store #543

1050 W. Mercury Blvd
Hampory, VA

COMMISSION NO: 518344
ISSUE DATE: 11/01/2018
SHEET TITLE: STANDARD SECTIONS AND SCHEDULES

SHEET NO: S5.1

OWNER: Kroger

MODELER: SMD
ENGINEER: BMS
PROJECT NUMBER: 182912

CONSULTANTS: schaefer architecture + design

1800 W. 120th Street, Suite 100, Minneapolis, MN 55440
3030 South Street, Suite 200, Minneapolis, MN 55408
800 2nd Avenue, Suite 200, Seattle, WA 98104

STURCTURAL ENGINEERS
800.542.3302
schaefer-inc.com