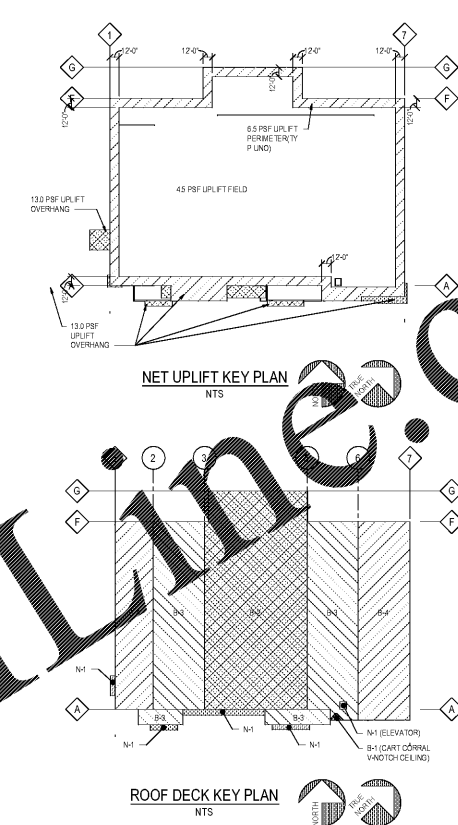
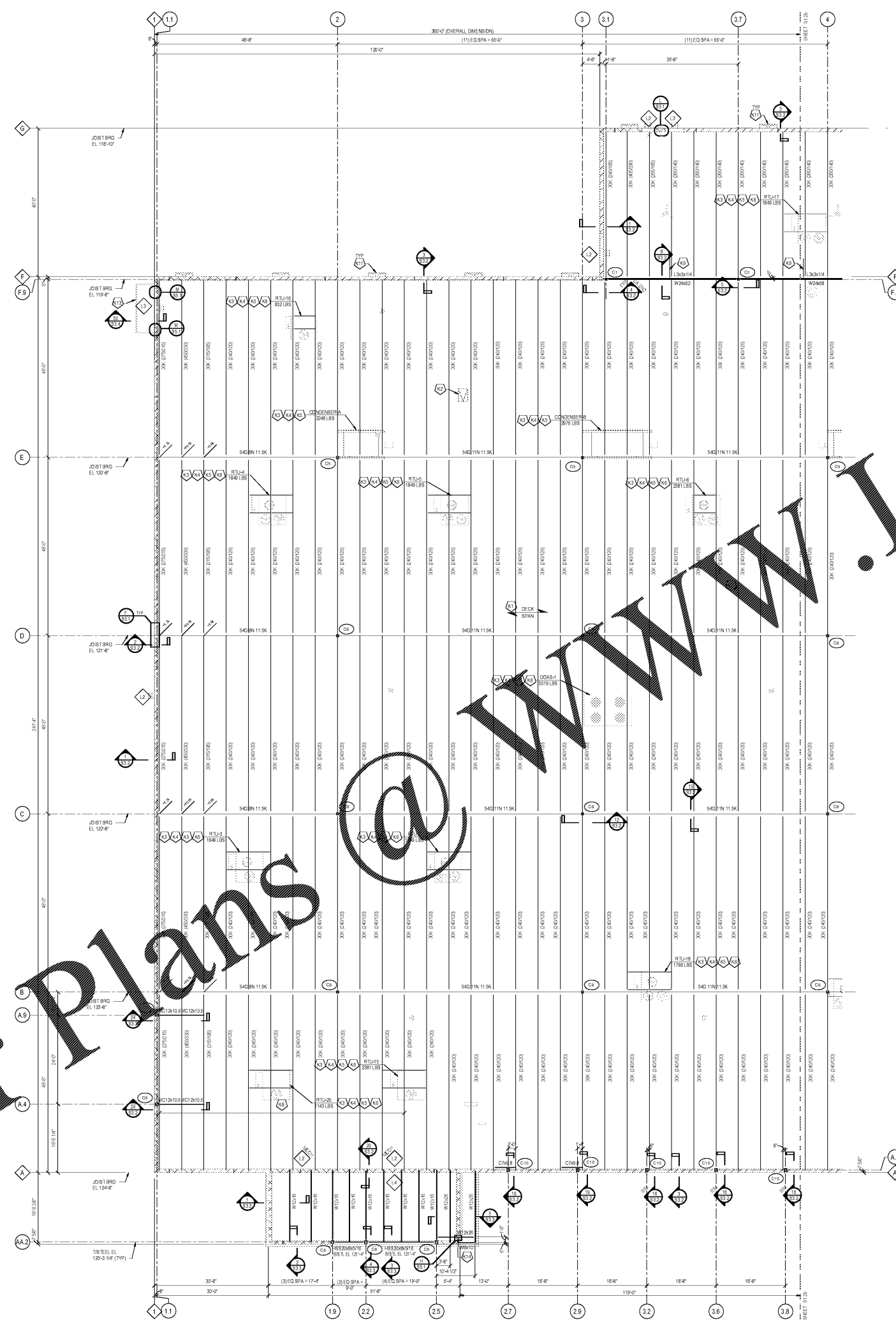


Order Plans



ROOF FRAMING PLAN
332' x 11'-0"

- PLAN NOTES:**
- SEE SHEET S8.1 FOR ABBREVIATIONS AND LEGEND (SYMBOLS) AND SHEET S5.1 FOR SCHEDULES AND TYPICAL DETAILS.
 - COORDINATE WITH ARCHITECTURAL DRAWINGS.
 - DOORS, WINDOWS AND OPENINGS ARE SHOWN IN APPROXIMATE LOCATIONS. SEE ARCHITECTURAL DRAWINGS FOR EXACT LOCATIONS.
 - FOR ROOF PENETRATIONS NOT SHOWN, REFER TO SHEET S5.1 FOR ADDITIONAL REINFORCING NOT INDICATED ON PLAN. LOCATE PENETRATIONS WHERE INDICATED ON ARCHITECTURAL AND MECHANICAL DRAWINGS.
 - PROVIDE TYPICAL JOIST BOTTOM CHORD BRACING AT LOCATIONS WHERE MEP AND ARCHITECTURAL COMPONENTS ARE BRACED TO JOIST BOTTOM CHORD. SEE DETAIL ON SHEET S5.1.
- KEY NOTES:**
- METAL DECK: SEE DECK PLAN ON S1.2a AND THE METAL DECK SCHEDULE ON SHEET S5.1.
 - ROOF HATCH: COORDINATE WITH ARCHITECTURAL DRAWINGS.
 - COORDINATE FINAL SIZE, LOCATION AND WEIGHT OF ROOF TOP UNITS AND ROOF OPENINGS WITH ARCHITECTURAL DRAWING AND/OR MECHANICAL EQUIPMENT SUPPLIER DRAWINGS PRIOR TO FABRICATION OF STEEL. JOIST MANUFACTURER TO DESIGN JOIST AND JOIST CORNER FOR ADDITIONAL WEIGHT OF ROOF TOP UNITS SHOWN ON DRAWINGS. CURRENT ROOF TOP EQUIPMENT SIZE AND LOCATION SHOWN IS COORDINATED WITH MECHANICAL MODEL DATED 03/11/2015.
 - SEE TYPICAL ROOF DECK OPENING DETAILS ON SHEET S5.1.
 - EQUIPMENT SUPPORTED WITH PROPRIETARY CLAMP: SEE MODEL S1 STANDARD DETAILS ASD-36 (RTU), ASD-37A (CONDENSER) AND ASD-155 (SKYLIGHT).
 - PROVIDE ROOF MECHANICAL UNIT SUPPORT PER DETAIL ON SHEET S5.1.
 - PROVIDE VERTICAL OPENING AT CORNER OF JOIST CORNER. SEE MECHANICAL DRAWINGS FOR MINIMUM OPENING DIMENSIONS.
 - PROVIDE 9" SEAT HEIGHT ON 4-BERES JOIST'S AT COMMON BEARING WITH U-JOIST'S. PROVIDE 9" SEAT HEIGHT ON 4-BERES JOIST'S AT MASONRY WALL BEARING. SEE RELATING SECTION FOR FURTHER INFO.
 - L20x316 BOTTOM FLANGE BRACE. SEE RELATING SECTION.
 - C12x27 ON TOP OF ROOF DECK. SEE RELATING SECTION. DESIGN ROOF JOIST FOR LOADS SHOWN FROM C12 COVERED. IN ADDITION TO JOIST LOADS SHOWN.
 - SEE DETAIL S5.1 FOR MASONRY REINFORCING BETWEEN PRIMARY AND OVERFLOW SCUPPERS FULL HEIGHT OF WALL AND INSTALL L1 LINTEL ABOVE SCUPPERS. TRIP.
 - CONTINUE PERIMETER ANGLE AND L3x3x1/4 DECK EDGE SUPPORT ANGLE. SEE RELATING SECTION FOR FURTHER INFORMATION.
 - PRE-FABRICATED CORNER BRACKET.
 - POCKET WALL & INSTALL BEAM BEARING PLATE PER TYPICAL BEAM & LINTEL BEARING DETAIL ON S5.1.
 - HSS3x1/4 POST FOR PARTITION WALL. CONFIRM LOCATION WITH ARCHITECT.

LDILLINE.COM

CR architecture + design

CONSULTANTS

STRUCTURAL ENGINEERS
800.542.3302
schaefer-inc.com

schaefer

MODELER: SMD
ENGINEER: BMS
PROJECT NUMBER: 1829.12

DATE: 11/01/2018
10/23/18 50% OWNER REVIEW
11/01/18 100% / BID / PERMIT

OWNER: Kroger

PROJECT TITLE: Kroger Store R543
1050 W. Mainway Blvd Hampton, VA

COMMISSION NO: 518344
ISSUE DATE: 11/01/2018

SHEET TITLE: ROOF FRAMING PLAN - WEST

SHEET NO: S1.2a

11/1/2018 11:53:37 AM C:\pbl\1829.12\18 - Struct_plans.dwg@schaefer-inc.com.plt