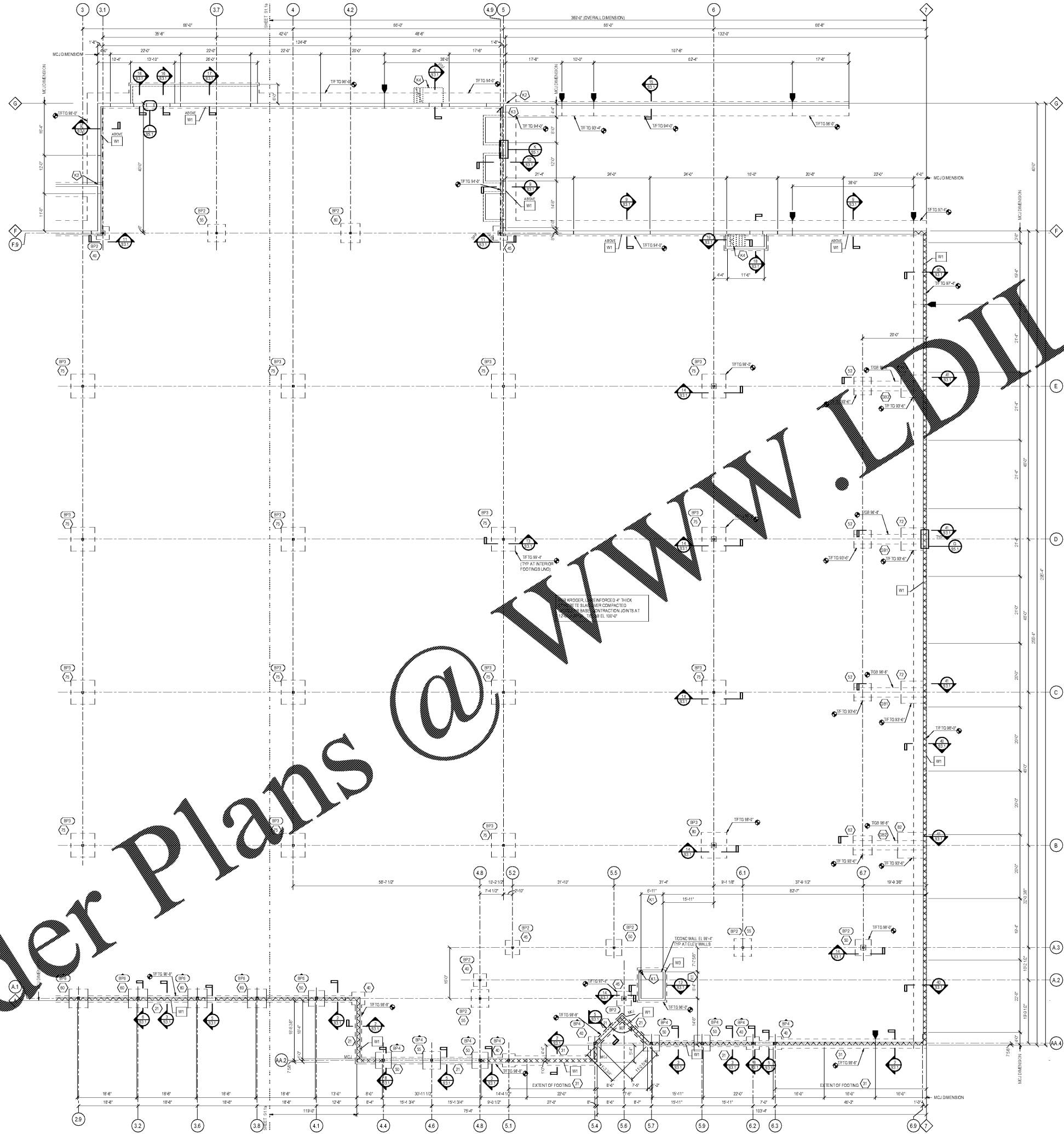


Order Plans @

WWW.LDOnline.com



FOUNDATION PLAN  
3/22" = 1'-0"

- PLAN NOTES:**
- SEE SHEET S0.1 FOR ABBREVIATIONS AND LEGEND (SYMBOLS) AND SHEET S0.1 FOR SCHEDULES AND TYPICAL DETAILS.
  - DOORS, WINDOWS AND OPENINGS ARE SHOWN IN APPROXIMATE LOCATIONS. SEE ARCHITECTURAL DRAWINGS FOR EXACT LOCATIONS.
  - REFERENCE PLAN ELEVATION 92'-0" = 13.00' MEAN SEA LEVEL.
  - SLOPE SLAB TO FLOOR DRAWING. COORDINATE WITH ARCHITECTURAL AND PLUMBING DRAWINGS.
  - FOOTING ELEVATIONS AND STEPS ARE BASED ON PAULSON MITCHELL SITE DRIVING PLAN DRAWING COORDINATED 9/20/2018. CONTRACTOR SHALL COORDINATE LOCATIONS WITH FINAL GRADING PLAN TO MAINTAIN MINIMUM DEPTH AS INDICATED IN THE STRUCTURAL GENERAL NOTES ON S0.1.
  - COORDINATE LOCATION OF FREEZER FLOOR WITH ARCHITECTURAL DRAWINGS. REFER TO KROGER'S STANDARD DETAIL ADD-15A FOR SLAB DETAILS.
  - EXCAVATE EXISTING FILL MATERIAL TO NATURAL SOIL & BACKFILL AS RECOMMENDED IN GEOTECH REPORT.
- REVISIONS:**
- ELEVATOR PIT SIZE AND LOCATION TO BE COORDINATED BY CONTRACTOR WITH FINAL ELEVATOR SELECTION. HOLD CORNER LOCATION SHOWN ON PLAN IF DIMENSIONS CHANGE FROM WHAT IS SHOWN.
  - PROVIDE 1/2" JOINT MATERIAL BETWEEN DOOR RETAINING WALL & BUILDING WALL.
  - LOW POINT OF SLOPING FOUNDATION DRAIN (1/2" - 1/2" SLOPE MIN) ON BACKFACE OF WALL. SEE W0.1 FOR FURTHER INFORMATION. SEE SHEET S0.1 FOR DETAILS.
  - STEEL STAIRS AND LANDING BY SPECIALTY ENGINEER.

PROJECT TITLE  
**Kroger Store  
R543**

1050 W. Mercury Blvd  
Hampton, VA

COMMISSION NO. 518344  
ISSUE DATE 11/01/2018

SHEET TITLE  
**FOUNDATION  
PLAN - EAST**

SHEET NO.  
**S1.1b**

CONSULTANTS

**STRUCTURAL ENGINEERS**  
800.542.3302  
schaefer-inc.com

**schaefer**

MODELER: SMD  
ENGINEER: BMS  
PROJECT NUMBER: 1829.12

DISCLAIMER: THIS DRAWING IS THE PROPERTY AND EXCLUSIVE PROPERTY OF SCHAEFER INC. NO PART OF THIS DRAWING OR THE INFORMATION CONTAINED HEREIN IS TO BE REPRODUCED OR TRANSMITTED IN ANY FORM OR BY ANY MEANS, WITHOUT THE WRITTEN PERMISSION OF SCHAEFER.

OWNER  
**Kroger**

DATE: 10/23/18 100% OWNER REVIEW  
11/01/18 100% / SD / PERMIT

DATE REVISION

CINCINNATI 800 Wye Street, 2210 Chimes  
DENVER 1275 Broadway, Suite 1000  
MINNEAPOLIS 205 South Street, Suite 205  
SEATTLE 800 2nd Avenue, Suite 2000

architecture + design

© 2018 schaefer inc. all rights reserved.  
www.schaefer-inc.com  
800.489.4349

11/01/2018 11:52:27 AM C:\Users\ldm\OneDrive\2018\1829\12\18 - Struct.\plan.dwg@schaefer-inc.com.plt