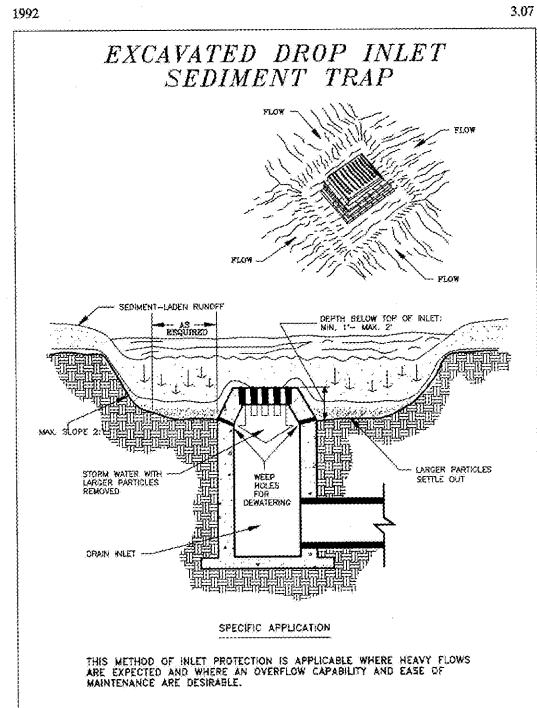
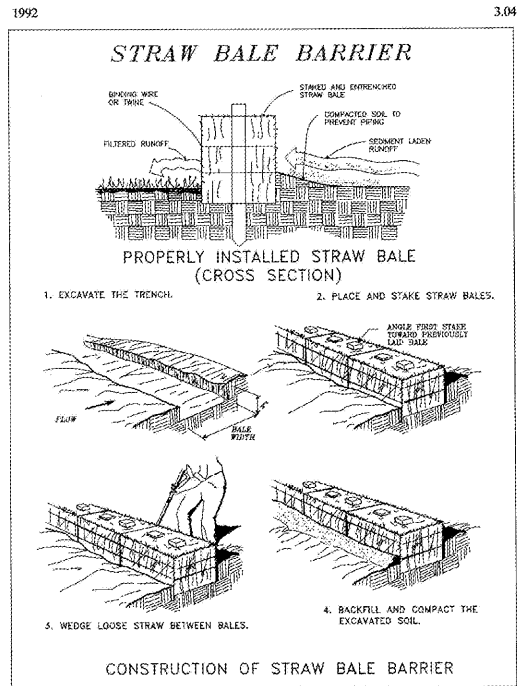


1. UNLESS OTHERWISE SPECIFIED, ALL DIMENSIONS ARE IN FEET AND INCHES. DIMENSIONS IN PARENTHESES ARE ALTERNATE DIMENSIONS. 2. ALL DIMENSIONS ARE TO FACE UNLESS OTHERWISE NOTED. 3. ALL DIMENSIONS ARE TO FACE UNLESS OTHERWISE NOTED. 4. ALL DIMENSIONS ARE TO FACE UNLESS OTHERWISE NOTED. 5. ALL DIMENSIONS ARE TO FACE UNLESS OTHERWISE NOTED.



Source: Michigan Soil Erosion and Sediment Control Guidebook, 1975, and USDA-SCS Plate 3.07-4

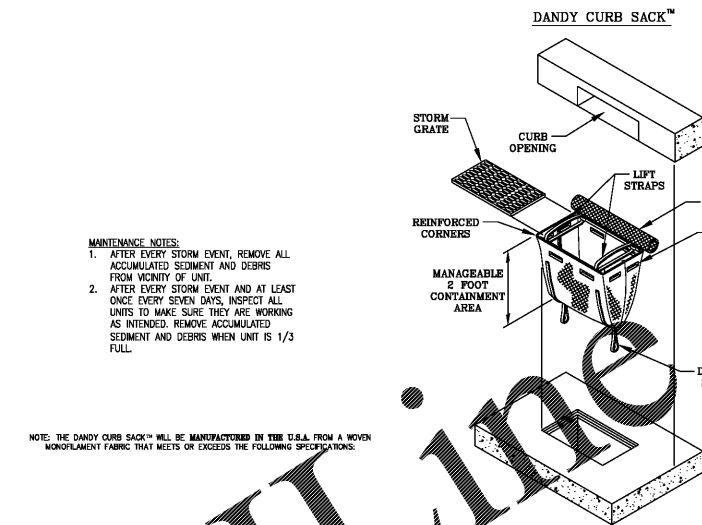
DROP INLET SEDIMENT TRAP DETAIL (P) C-640 NOT TO SCALE 6



Source: Va. DSWC Plate 3.04-1

NOTE: INSTALLATION OF STRAW BALES SHALL INCLUDE A WEIGHT TO RESTRICT MOVEMENT ON ASPHALT AREAS

STRAW BALE BARRIER (P) C-640 NOT TO SCALE 4



- MAINTENANCE NOTES:**
1. AFTER EVERY STORM EVENT, REMOVE ALL ACCUMULATED SEDIMENT AND DEBRIS FROM VICINITY OF UNIT.
 2. AFTER EVERY STORM EVENT AND AT LEAST ONCE EVERY SEVEN DAYS, INSPECT ALL UNITS TO MAKE SURE THEY ARE WORKING AS INTENDED. REMOVE ACCUMULATED SEDIMENT AND DEBRIS WHEN UNIT IS 1/3 FULL.

NOTE: THE DANDY CURB SACK™ WILL BE MANUFACTURED IN THE U.S.A. FROM A WOVEN MONOFILAMENT FABRIC THAT MEETS OR EXCEEDS THE FOLLOWING SPECIFICATIONS:

REGULAR FLOW DANDY CURB SACK™ (BLACK)

Mechanical Properties	Test Method	Units	MARV
Grab Tensile Strength	ASTM D 4832	lbs (kg)	78 (35) x 1.40 (315)
Grab Elongation	ASTM D 4832	%	15 x 15
Puncture Strength	ASTM D 4832	lbs (kg)	0.67 (150)
Mullen Burst Strength	ASTM D 3786	kPa (psi)	2500 (360)
Trapezoidal Tear	ASTM D 4623	kg (lb)	0.67 (150) x 0.75 (165)
UV Resistance	ASTM D 4355	%	90
Apparent Opening Size	ASTM D 4751	Min (US Sieve)	0.425 (40)
Flow Rate	ASTM D 4491	l/min/m² (gal/min/ft²)	2852 (70)
Permeability	ASTM D 4491	Sec	0.90

H-LOW DANDY CURB SACK™ (ORANGE)

Mechanical Properties	Test Method	Units	MARV
Grab Tensile Strength	ASTM D 4832	kg (lb)	1.62 (365) x 0.89 (200)
Grab Elongation	ASTM D 4832	%	24 x 30
Puncture Strength	ASTM D 4832	kg (lb)	0.45 (90)
Mullen Burst Strength	ASTM D 3786	kPa (psi)	3097 (450)
Trapezoidal Tear	ASTM D 4623	kg (lb)	0.51 (115) x 0.53 (75)
UV Resistance	ASTM D 4355	%	90
Apparent Opening Size	ASTM D 4751	Min (US Sieve)	0.425 (40)
Flow Rate	ASTM D 4491	l/min/m² (gal/min/ft²)	5907 (145)
Permeability	ASTM D 4491	Sec	2.1

*Note: All Dandy Sacks™ can be ordered with our optional oil absorbent pillows

CURB INLET PROTECTION "DANDY SACK" DETAIL (P) C-640 NOT TO SCALE 2

1992 3.35

TABLE 3.35-A
ORGANIC MULCH MATERIALS AND APPLICATION RATES

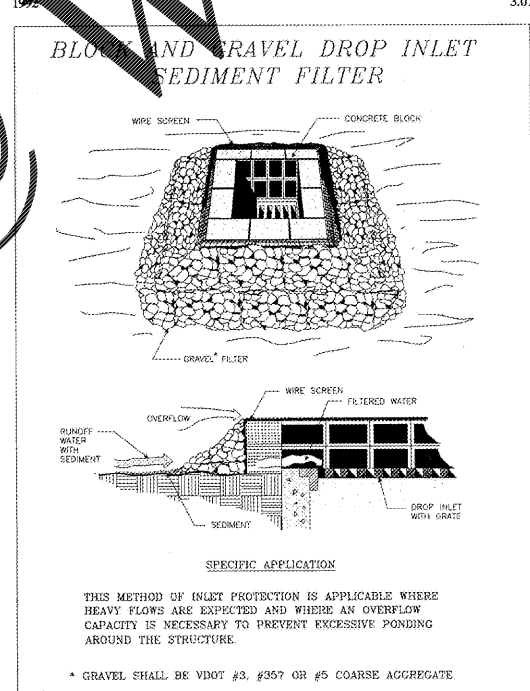
MULCHES:	RATES:		NOTES:
	Per Acre	Per 1000 sq. ft.	
Straw or Hay	1½ - 2 tons (Minimum 2 tons for winter cover)	70 - 90 lbs.	Free from weeds and coarse matter. Must be anchored. Spread with mulch blower or by hand.
Fiber Mulch	Minimum 1500 lbs.	35 lbs.	Do not use as mulch for winter cover or during hot, dry periods.* Apply as slurry.
Corn Stalks	4 - 6 tons	185 - 275 lbs.	Cut or shredded in 4-6" lengths. Air-dried. Do not use in fine turf areas. Apply with mulch blower or by hand.
Wood Chips	4 - 6 tons	185 - 275 lbs.	Free of coarse matter, dried. Treat with 12 lbs nitrogen per ton. Do not use in fine turf areas. Apply with mulch blower, chip handler, or by hand.
Bark Chips or Shredded Bark	50 - 70 cu. yds.	1-2 cu. yds.	Free of coarse matter. Air-dried. Do not use in fine turf areas. Apply with mulch blower, chip handler, or by hand.

* When fiber mulch is the only mulch material being applied during periods when straw should be used, apply at a minimum rate of 2000 lbs./acre or 45 lbs./1000 sq. ft.

Source: Va. DSWC

III - 353

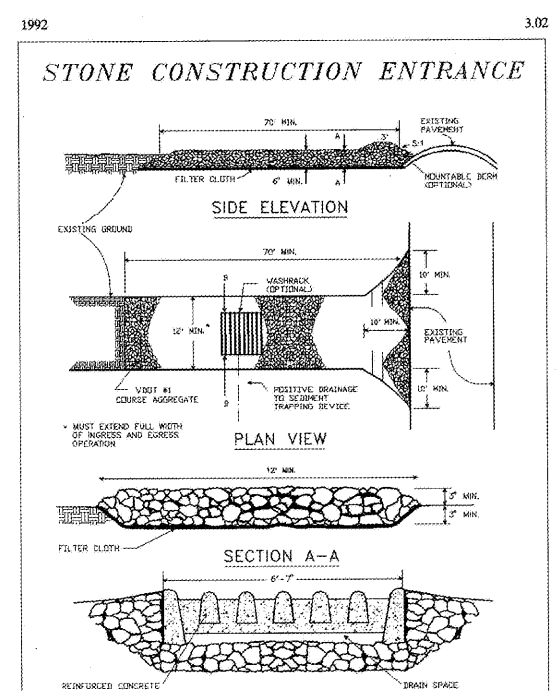
MULCHING MATERIALS AND RATES (M) C-640 NOT TO SCALE 5



Source: Va. DSWC Plate 3.07-3

III - 38

DROP INLET SEDIMENT FILTER DETAIL (P) C-640 NOT TO SCALE 3



Source: Adapted from 1983 Maryland Standards for Soil Erosion and Sediment Control, and Va. DSWC Plate 3.02-1

III - 9

STONE CONSTRUCTION ENTRANCE DETAIL (P) C-640 NOT TO SCALE 1

PAULSON MITCHELL
 INCORPORATED
 LAND PLANNERS • SURVEYORS
 ENGINEERS • ARCHITECTS
 LANDSCAPE ARCHITECTS
 200 MILL STREET
 SUITE 200
 ROSWELL, GEORGIA 30075
 VOICE 770.650.7685
 FAX 770.650.7684
 www.paulsonmitchell.com

PROJECT:
RIVERPOINTE PLAZA PHASE 2
 1048 & 1050 W. MERCURY BLVD.
 HAMPTON, VIRGINIA 23666

FOR:
KB RIVERDALE, LLC
 2743 PERIMETER PARKWAY
 BLDG. 100, SUITE 370
 AUGUSTA, GA 30909
 PH. (706) 854-6714

REVISIONS

DATE	CITY COMMENTS
08.19.16	CITY COMMENTS
10.04.16	CITY COMMENTS
10.13.16	CITY COMMENTS

va811.com
 Dig With G.O.G.G.
 BEFORE YOU DIG, CALL MISS UTILITY 1-800-552-7001

24 HR EMERGENCY CONTACT
MARK SENN
 MARK.SENN@SOUTHEASTERNCOMPANY.COM

2014169d-2.dwg 06.28.16

EROSION CONTROL DETAILS