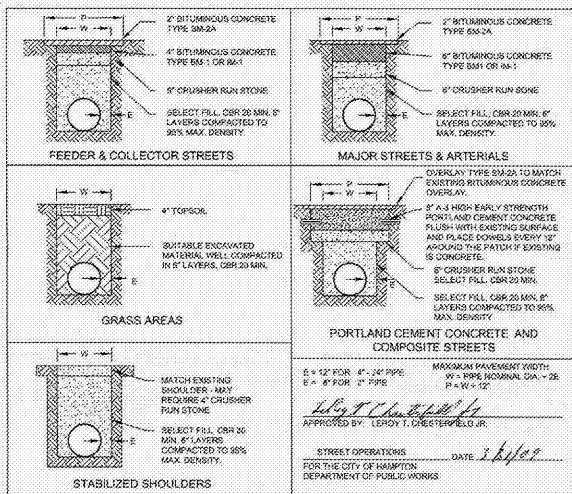


C:\PROJECTS\2016\2016-002\DWG\2016-002-01.dwg, AND FULL FILE, NEED TO CHECK 2" AND 3" WATER METER, DATE TO VERIFY, MICHAEL MITCHELL, DATE TO VERIFY, MICHAEL MITCHELL, DATE TO VERIFY, MICHAEL MITCHELL



1. PAVEMENT TO BE REMOVED SHALL BE SAW CUT USING APPROPRIATE EQUIPMENT TO PROVIDE STRAIGHT NEAT EDGES. CUT EDGES TO BE "V" SHAPED PRIOR TO PAVING PATCHING.

2. SELECT MATERIAL SHALL MEET THE REQUIREMENTS OF PUBLIC ROAD CLASSIFICATION (PRC) 4, 5, 6, 7, 8, 9, 10, 11, 12, 13, 14, 15, 16, 17, 18, 19, 20, 21, 22, 23, 24, 25, 26, 27, 28, 29, 30, 31, 32, 33, 34, 35, 36, 37, 38, 39, 40, 41, 42, 43, 44, 45, 46, 47, 48, 49, 50, 51, 52, 53, 54, 55, 56, 57, 58, 59, 60, 61, 62, 63, 64, 65, 66, 67, 68, 69, 70, 71, 72, 73, 74, 75, 76, 77, 78, 79, 80, 81, 82, 83, 84, 85, 86, 87, 88, 89, 90, 91, 92, 93, 94, 95, 96, 97, 98, 99, 100.

3. CRUSHER RUN STONE, PORTLAND CEMENT CONCRETE AND BITUMINOUS MATERIALS SHALL COMPLY WITH CURRENT SPECIFICATIONS OF VDOT.

4. THESE DETAILS SHOW MINIMUM STANDARD PAVEMENT REPAIR WILL IN NO CASE RESULT IN A PAVED SECTION LESS THAN THAT REMOVED.

5. ALL OTHER DISTURBED AREAS, CURBS, WALKS, ETC. SHALL BE RESTORED TO AS GOOD OR BETTER THAN THAT WHICH EXISTED.

6. IF A CONCRETE DRIVEWAY APRON IS CUT, THE ENTIRE APRON MUST BE REPLACED.

7. PERTURBERS SHALL BE COMMERCIAL 10-19 1/2.

8. SEED SHALL BE KEPT LOCKY BY FESCUE.

9. OVERLAP EXISTING ROADWAY PAVEMENT PATCHES BY MIN ON EACH SIDE OF PATCH OPENING.

10. CONCRETE STREETS SHALL BE REPAIRED WITH CONCRETE.

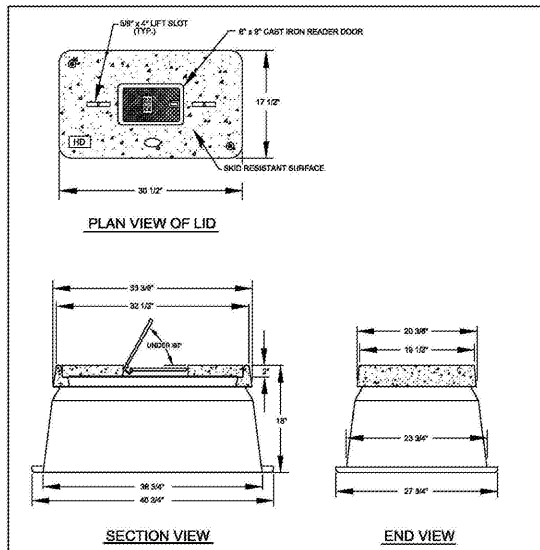
11. REFER TO HAMPTON UTILITY POLICY FOR SPECIFIC INFORMATION NOT COVERED HERE.

APPROVED BY: LESTON T. CHASE, PE, CIVIL ENGINEER  
DATE: 1/24/16  
CITY OF NEWPORT NEWS  
DEPARTMENT OF PUBLIC UTILITIES  
NEWPORT NEWS, VIRGINIA

STREET OPERATIONS  
FOR THE CITY OF HAMPTON  
DEPARTMENT OF PUBLIC WORKS

FIGURE NO. 52

**WATER PIPE BEDDING**  
NOT TO SCALE



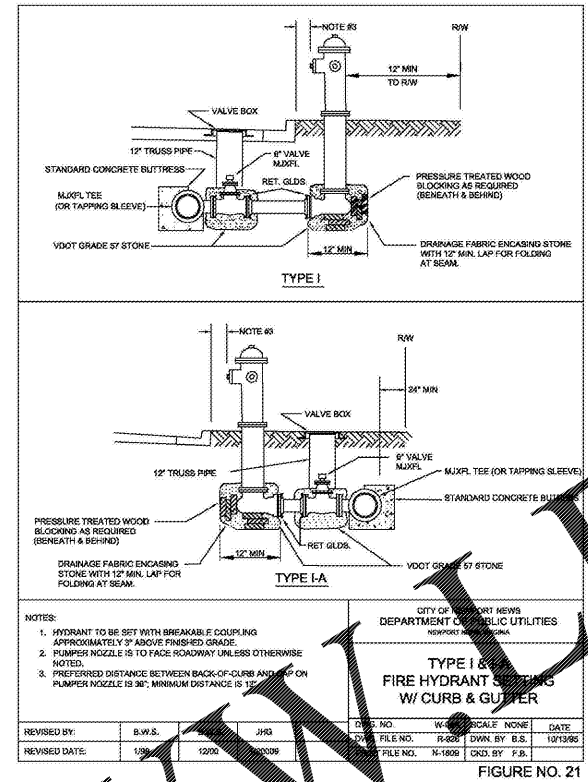
CITY OF NEWPORT NEWS  
DEPARTMENT OF PUBLIC UTILITIES  
NEWPORT NEWS, VIRGINIA

**NO. 3 METER BOX & LID  
FOR 1 1/2" & 2" METERS**

DWG. NO. W-15C SCALE NONE DATE  
TRNG. FILE NO. R-2008 DWN. BY: JHG 1/14/2009  
PRINT FILE NO. N-1808 CND. BY: JHG

FIGURE NO. 39

**2" METER BOX**  
NOT TO SCALE



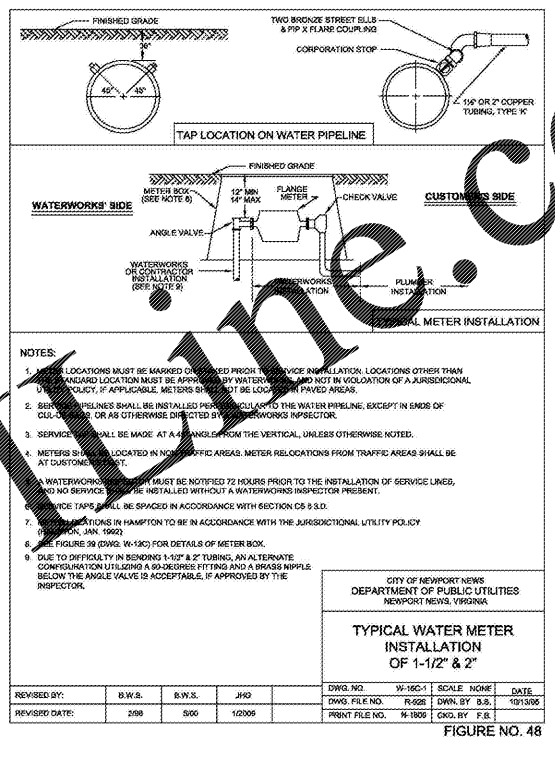
CITY OF NEWPORT NEWS  
DEPARTMENT OF PUBLIC UTILITIES  
NEWPORT NEWS, VIRGINIA

**TYPE I & I-A  
FIRE HYDRANT SETTING  
W/ CURB & GUTTER**

DWG. NO. W-15C SCALE NONE DATE  
TRNG. FILE NO. R-2008 DWN. BY: JHG 1/14/2009  
PRINT FILE NO. N-1808 CND. BY: JHG

FIGURE NO. 21

**FIRE HYDRANT DETAIL**  
NOT TO SCALE



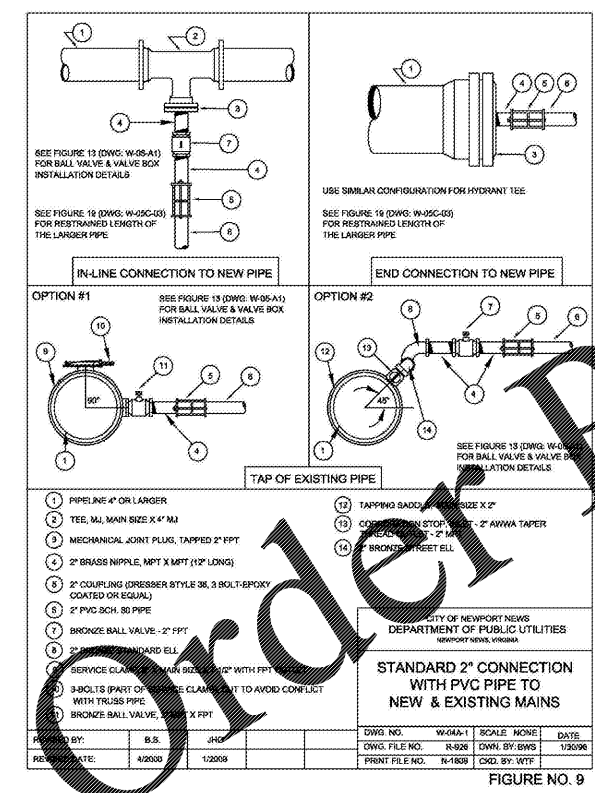
CITY OF NEWPORT NEWS  
DEPARTMENT OF PUBLIC UTILITIES  
NEWPORT NEWS, VIRGINIA

**TYPICAL WATER METER  
INSTALLATION  
OF 1-1/2" & 2"**

DWG. NO. W-19C1 SCALE NONE DATE  
TRNG. FILE NO. R-2008 DWN. BY: B.S. 10/13/09  
PRINT FILE NO. N-1808 CND. BY: F.B.

FIGURE NO. 48

**2" WATER METER INSTALLATION**  
NOT TO SCALE



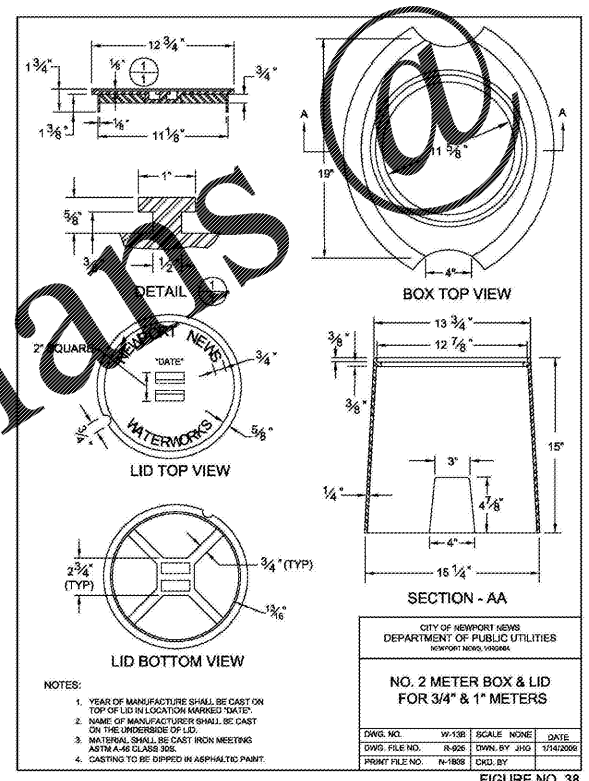
CITY OF NEWPORT NEWS  
DEPARTMENT OF PUBLIC UTILITIES  
NEWPORT NEWS, VIRGINIA

**STANDARD 2" CONNECTION  
WITH PVC PIPE TO  
NEW & EXISTING MAINS**

DWG. NO. W-06A1 SCALE NONE DATE  
TRNG. FILE NO. R-2008 DWN. BY: JHG 1/13/09  
PRINT FILE NO. N-1808 CND. BY: JHG

FIGURE NO. 9

**2" CONNECTION**  
NOT TO SCALE



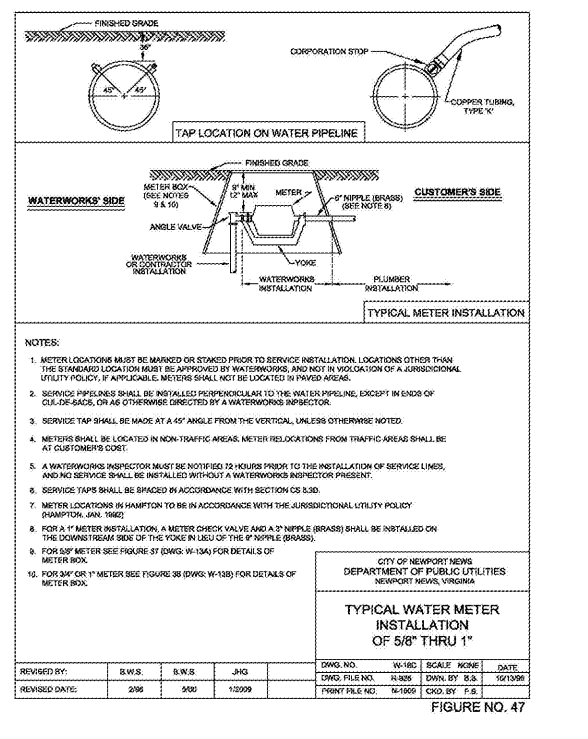
CITY OF NEWPORT NEWS  
DEPARTMENT OF PUBLIC UTILITIES  
NEWPORT NEWS, VIRGINIA

**NO. 2 METER BOX & LID  
FOR 3/4" & 1" METERS**

DWG. NO. W-15C SCALE NONE DATE  
TRNG. FILE NO. R-2008 DWN. BY: JHG 1/14/2009  
PRINT FILE NO. N-1808 CND. BY: JHG

FIGURE NO. 38

**3/4" WATER METER BOX**  
NOT TO SCALE



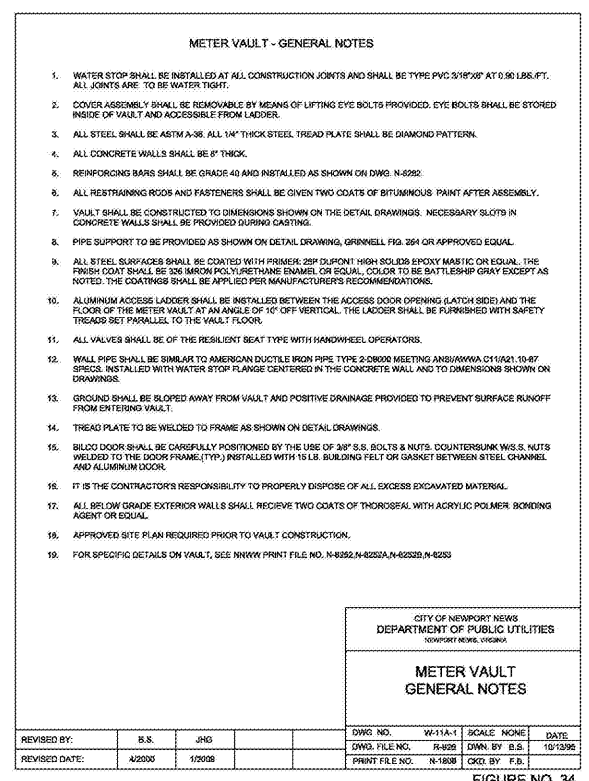
CITY OF NEWPORT NEWS  
DEPARTMENT OF PUBLIC UTILITIES  
NEWPORT NEWS, VIRGINIA

**TYPICAL WATER METER  
INSTALLATION  
OF 3/4" THRU 1"**

DWG. NO. W-19C1 SCALE NONE DATE  
TRNG. FILE NO. R-2008 DWN. BY: B.S. 10/13/09  
PRINT FILE NO. N-1808 CND. BY: F.B.

FIGURE NO. 47

**3/4" WATER METER INSTALLATION**  
NOT TO SCALE



CITY OF NEWPORT NEWS  
DEPARTMENT OF PUBLIC UTILITIES  
NEWPORT NEWS, VIRGINIA

**METER VAULT  
GENERAL NOTES**

DWG. NO. W-11A-1 SCALE NONE DATE  
TRNG. FILE NO. R-2008 DWN. BY: B.S. 10/13/09  
PRINT FILE NO. N-1808 CND. BY: F.B.

FIGURE NO. 34

**METER VAULT NOTES**  
NOT TO SCALE

**PAULSON MITCHELL**  
 INCORPORATED  
 2000 HILL STREET  
 SUITE 200  
 ROSWELL, GEORGIA 30075  
 VOICE 770.650.7685  
 FAX 770.650.7684  
 www.paulsonmitchell.com

PROJECT:  
**RIVERPOINTE  
 PLAZA PHASE 2**  
 1048 & 1050 W. MERCURY BLVD.  
 HAMPTON, VIRGINIA 23666

FOR:  
**KB  
 RIVERDALE,  
 LLC**  
 2743 PERIMETER PARKWAY  
 BLDG. 100, SUITE 370  
 AUGUSTA, GA 30909  
 PH. (706) 854-6714

**REVISIONS**

08.19.16	CITY COMMENTS
10.04.16	CITY COMMENTS
10.13.16	CITY COMMENTS

BEFORE YOU DIG, CALL MISS UTILITY 1-800-552-7001

**24 HR EMERGENCY CONTACT**  
**MARK SENN**  
 MARK.SENN@OUTERSTATECOMPANY.COM

2014169d-2.dwg 06.28.16

UTILITY DETAILS

SHEET **C-630**

SP 2016-0020