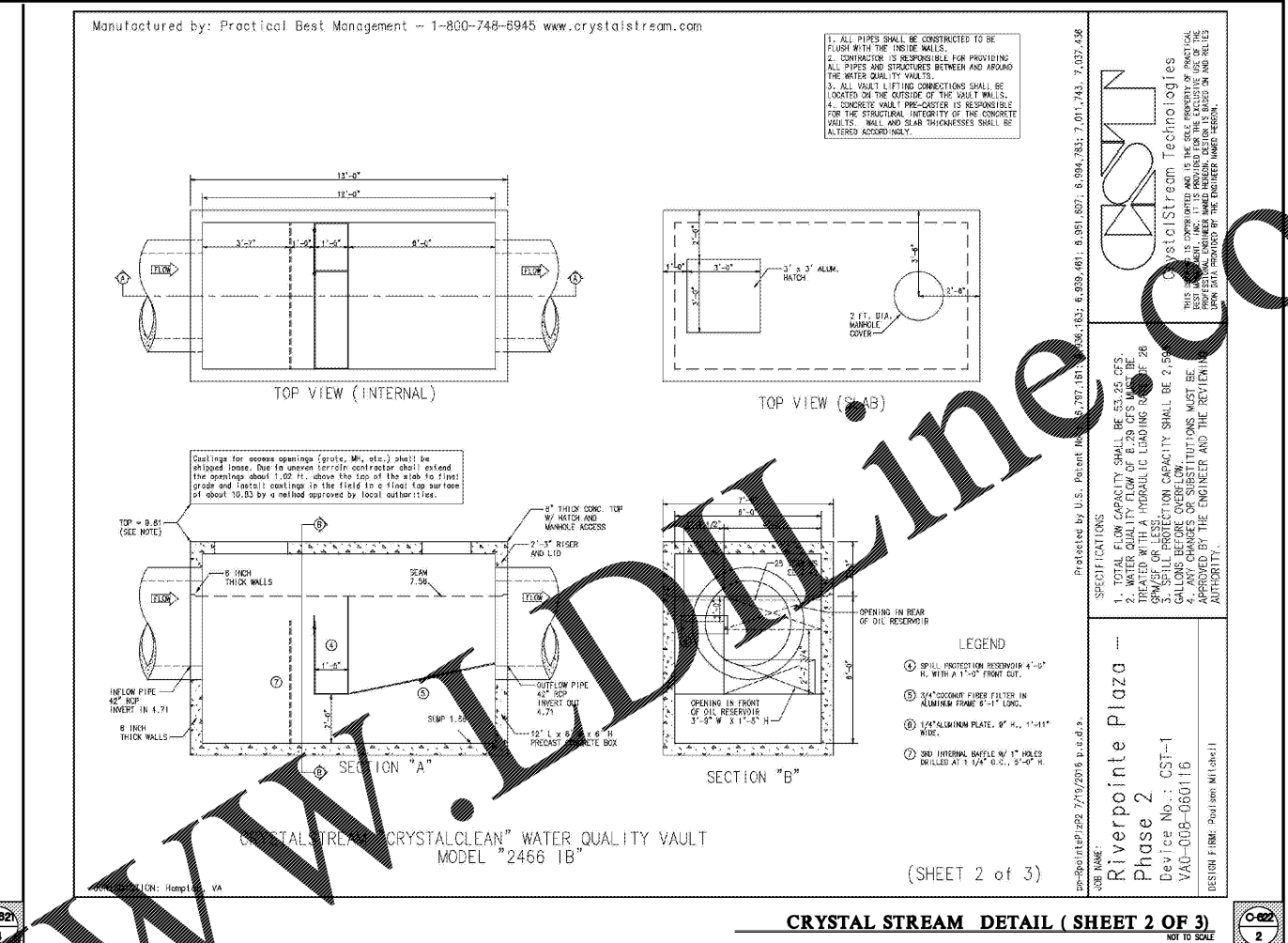
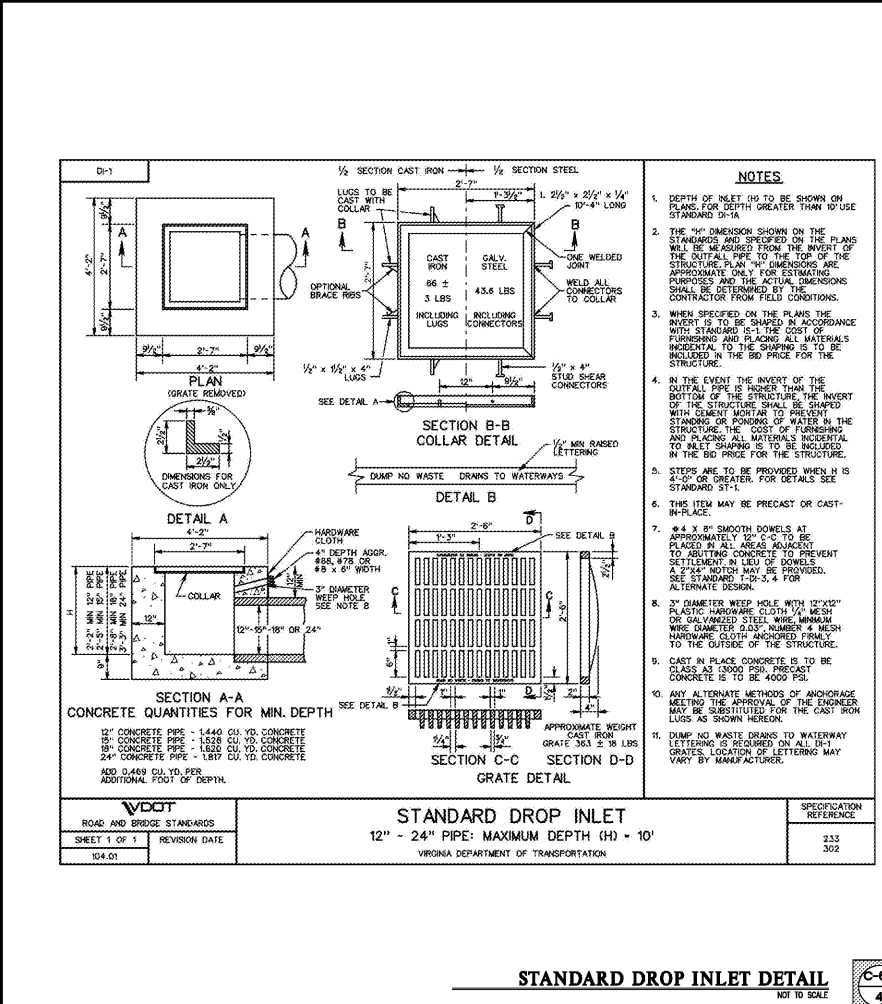
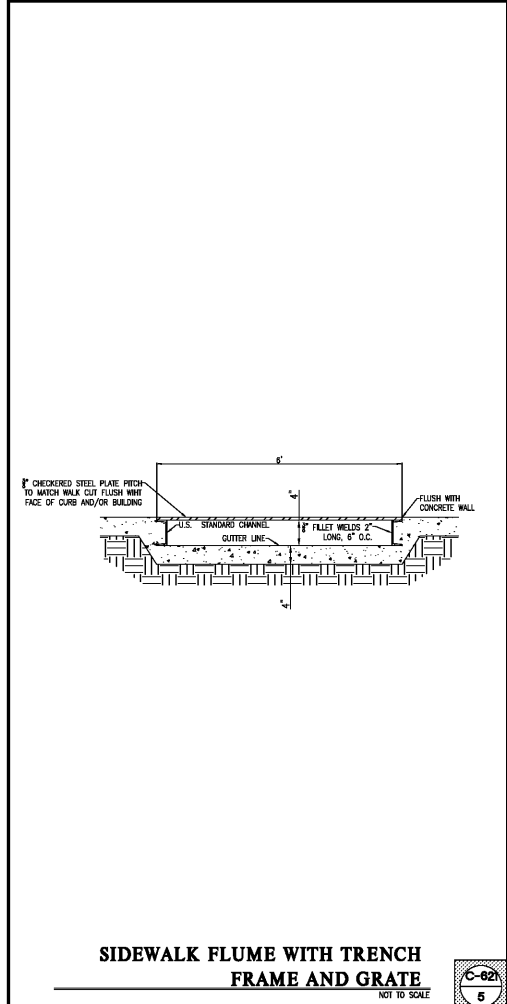


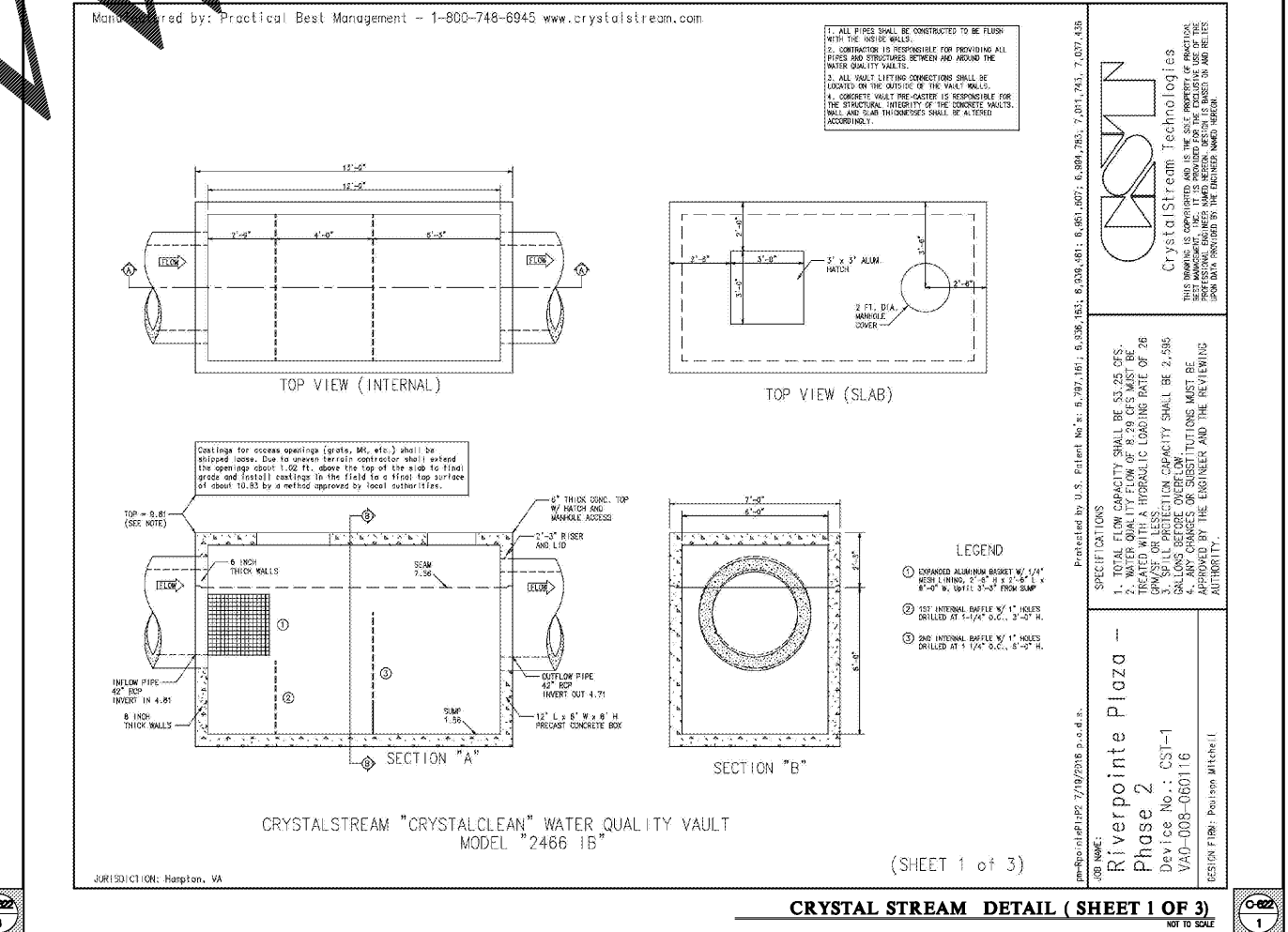
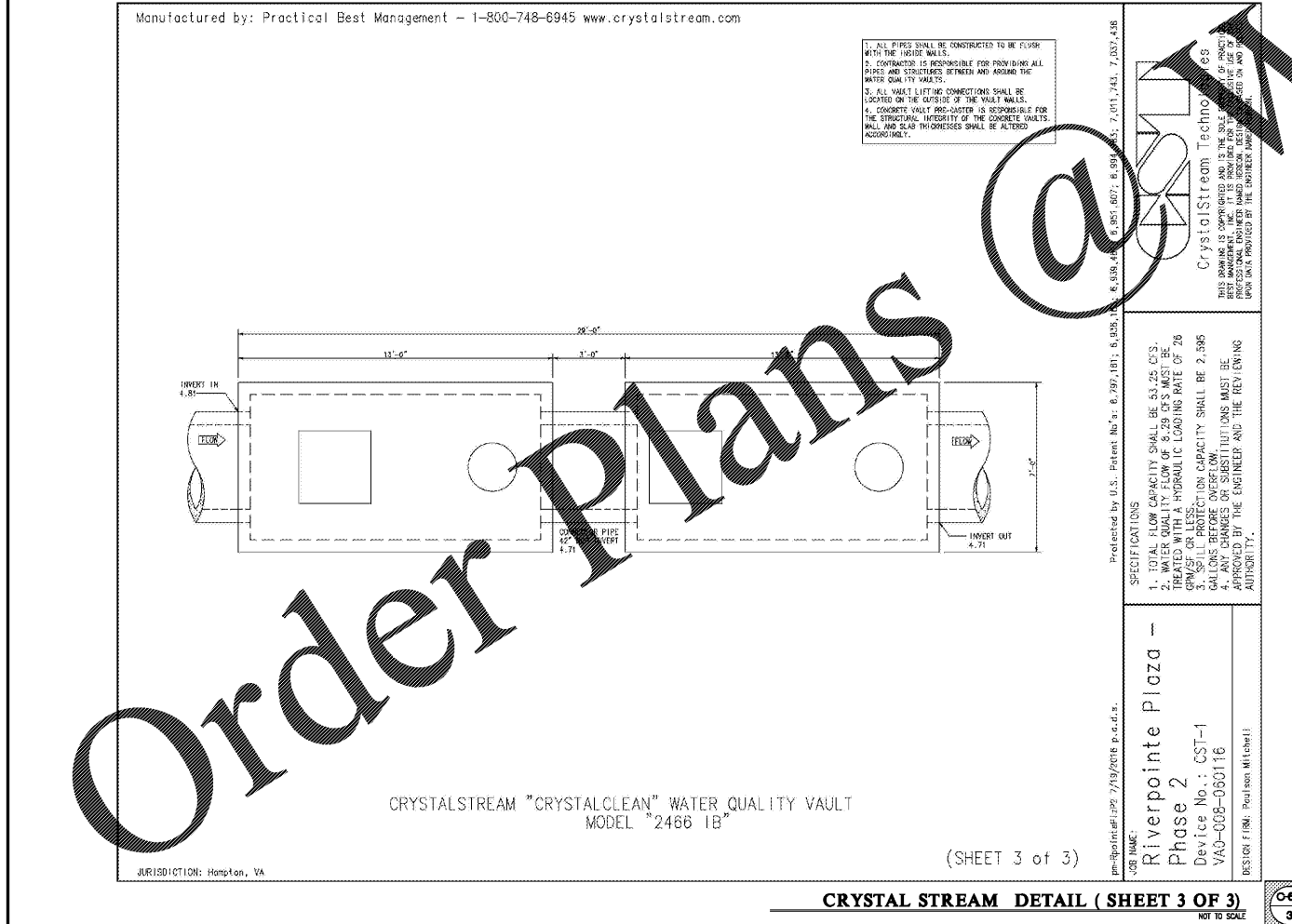
CRYSTALSTREAM "CRYSTALCLEAN" WATER QUALITY VAULT MODEL "2466 1B" IS THE PROPERTY OF PRACTICAL BEST MANAGEMENT, INC. ALL RIGHTS RESERVED. NO PART OF THIS DOCUMENT IS TO BE REPRODUCED OR TRANSMITTED IN ANY FORM OR BY ANY MEANS, ELECTRONIC OR MECHANICAL, INCLUDING PHOTOCOPYING, RECORDING, OR BY ANY INFORMATION STORAGE AND RETRIEVAL SYSTEM.



PAULSON MITCHELL
INCORPORATED
200 MILL STREET
ROSWELL, GEORGIA 30075
VOICE 770.650.7685
FAX 770.650.7684
www.paulsonmitchell.com

PROJECT:
RIVERPOINTE PLAZA PHASE 2
1048 & 1050 W. MERCURY BLVD.
HAMPTON, VIRGINIA 23666

FOR:
KB RIVERDALE, LLC
2743 PERIMETER PARKWAY
BLDG. 100, SUITE 370
AUGUSTA, GA 30909
PH. (706) 854-6714



REVISIONS

DATE	CITY COMMENTS
08.19.16	CITY COMMENTS
10.04.16	CITY COMMENTS
10.13.16	CITY COMMENTS

va811.com
Dig With G.O.G.G.

BEFORE YOU DIG, CALL MISS UTILITY 1-800-552-7001

24 HR EMERGENCY CONTACT
MARK SENN
MARK.SENN@SOUTHEASTERNCOMPANY.COM

2014169d-2.dwg 06.28.16

GRADING DETAILS

SHEET C-622
SP 2016-0020