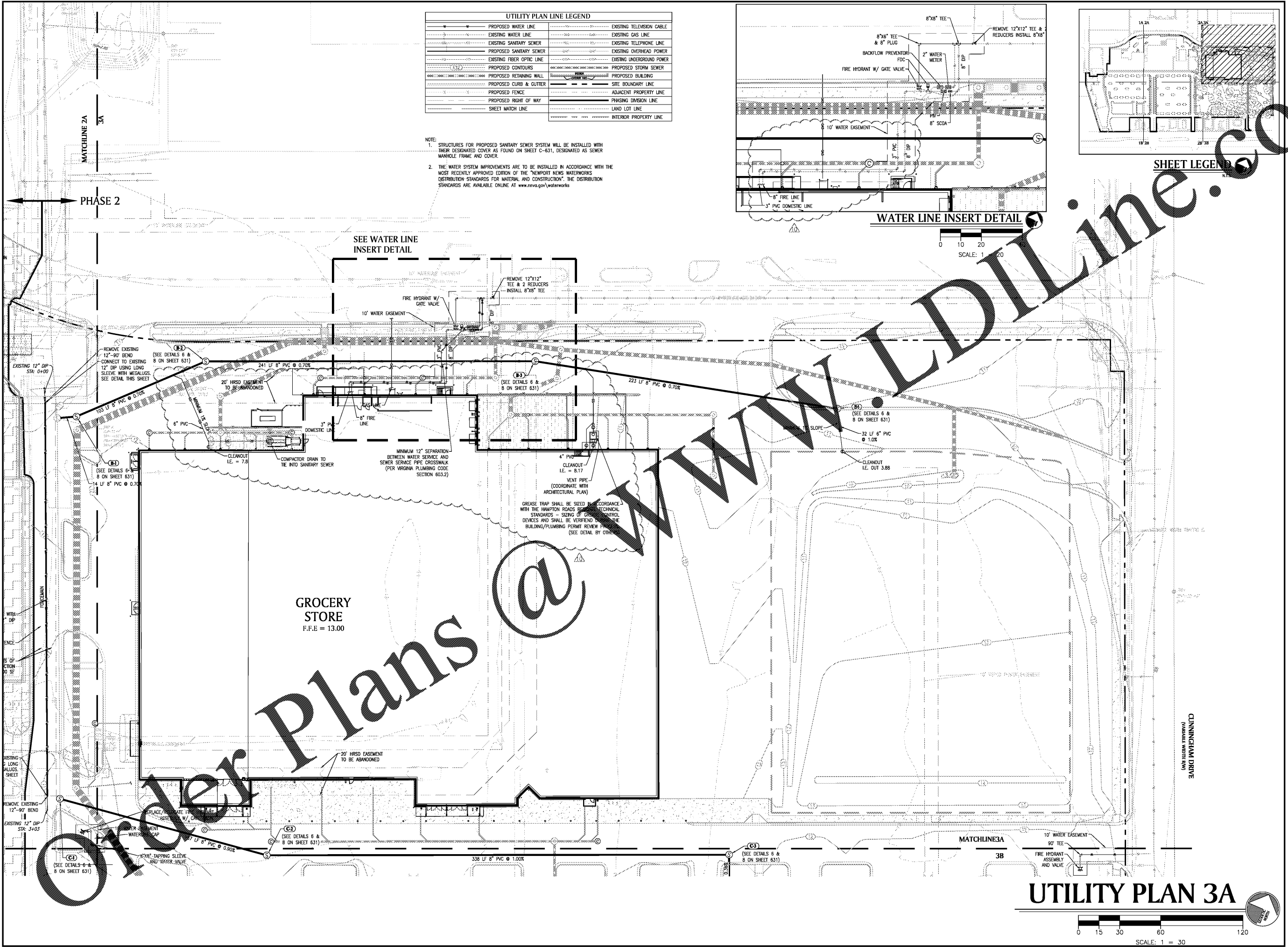
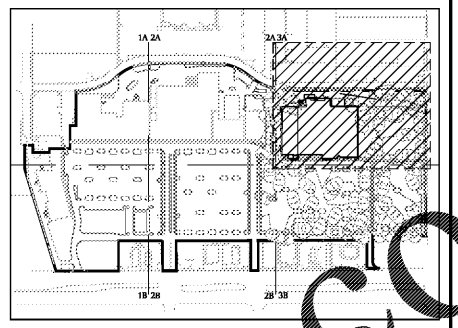
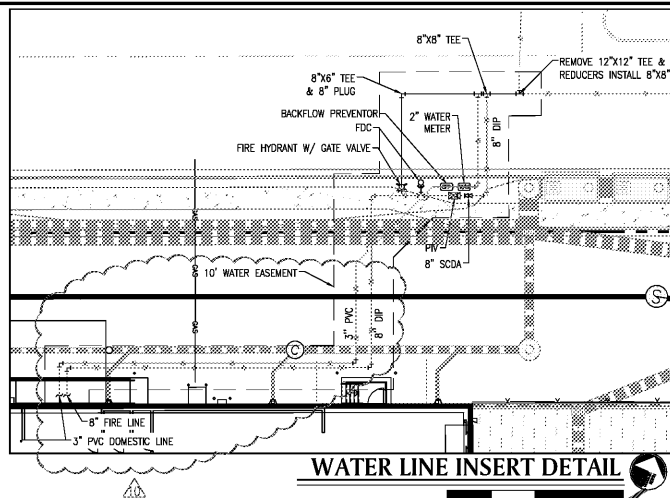


\\paulsonmitchell.com\Projects\2016\Riverpointe Plaza Phase 2\Drawings\Utility\Utility Plan 3A.dwg, PLOTTED: 11/16/16 10:52:45 AM

UTILITY PLAN LINE LEGEND			
—●—●—	PROPOSED WATER LINE	—●—●—	EXISTING TELEVISION CABLE
—●—●—	EXISTING WATER LINE	—●—●—	EXISTING GAS LINE
—●—●—	EXISTING SANITARY SEWER	—●—●—	EXISTING TELEPHONE LINE
—●—●—	PROPOSED SANITARY SEWER	—●—●—	EXISTING OVERHEAD POWER
—●—●—	EXISTING FIBER OPTIC LINE	—●—●—	EXISTING UNDERGROUND POWER
—●—●—	PROPOSED CONTOURS	—●—●—	PROPOSED STORM SEWER
—●—●—	PROPOSED RETAINING WALL	—●—●—	PROPOSED BUILDING
—●—●—	PROPOSED CURB & GUTTER	—●—●—	SITE BOUNDARY LINE
—●—●—	PROPOSED FENCE	—●—●—	ADJACENT PROPERTY LINE
—●—●—	PROPOSED RIGHT OF WAY	—●—●—	PHASING DIVISION LINE
—●—●—	SHEET MATCH LINE	—●—●—	LAND LOT LINE
		—●—●—	INTERIOR PROPERTY LINE

NOTE:
 1. STRUCTURES FOR PROPOSED SANITARY SEWER SYSTEM WILL BE INSTALLED WITH THEIR DESIGNATED COVER AS FOUND ON SHEET C-631, DESIGNATED AS SEWER MANHOLE FRAME AND COVER.
 2. THE WATER SYSTEM IMPROVEMENTS ARE TO BE INSTALLED IN ACCORDANCE WITH THE MOST RECENTLY APPROVED EDITION OF THE "NEWPORT NEWS WATERWORKS DISTRIBUTION STANDARDS FOR MATERIAL AND CONSTRUCTION". THE DISTRIBUTION STANDARDS ARE AVAILABLE ONLINE AT www.nva.gov/waterworks



PAULSON MITCHELL
 INCORPORATED
 85 MILL STREET
 SUITE 200
 ROSWELL, GEORGIA 30075
 VOICE 770.650.7685
 FAX 770.650.7684
 www.paulsonmitchell.com

PROJECT:
RIVERPOINTE PLAZA PHASE 2
 1048 & 1050 W. MERCURY BLVD.
 HAMPTON, VIRGINIA 23666

FOR:
KB RIVERDALE, LLC
 2743 PERIMETER PARKWAY
 BLDG. 100, SUITE 370
 AUGUSTA, GA 30909
 PH. (706) 854-6714

REVISIONS	
△ 08.19.16	CITY COMMENTS
△ 10.04.16	CITY COMMENTS
△ 10.13.16	CITY COMMENTS
△ 02.01.17	CLIENT COMMENTS
△ 11.01.18	CLIENT COMMENTS

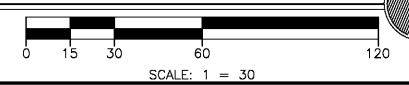
va811.com
 Dig With G.O.G.
 BEFORE YOU DIG, CALL MISS UTILITY 1-800-592-7001

24 HR EMERGENCY CONTACT
MARK SENN
 MARK.SENN@SOUTHEASTERNCOMPANY.COM

2014169u-2.dwg 06.28.16

UTILITY PLAN 3A

UTILITY PLAN 3A



SHEET **C-310**
 SP 2016-0020