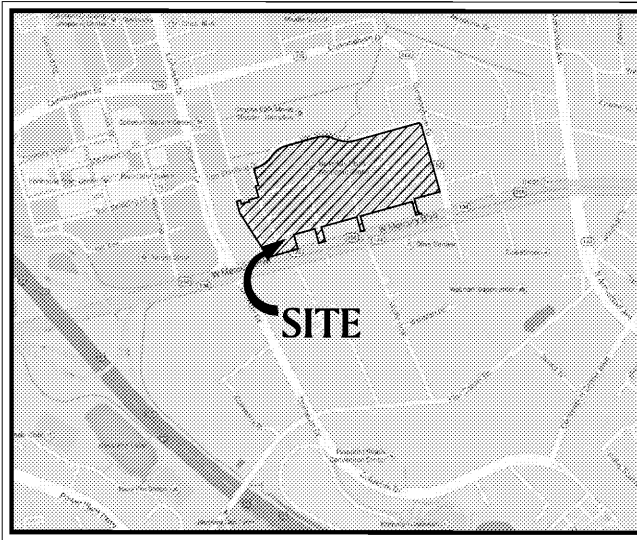


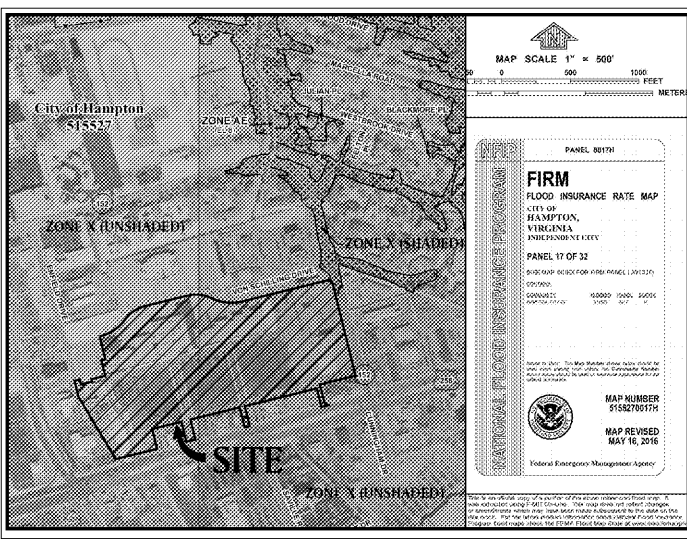
RIVERPOINTE PLAZA PHASE 2

1048 & 1050 W. MERCURY BLVD.
HAMPTON, VIRGINIA 23666

TOTAL PROJECT AREA = ± 37.80 ACRES
TOTAL PHASE II AREA = ± 13.74 ACRES
TOTAL PHASE II DISTURBED AREA = ± 14.55 ACRES



VICINITY MAP
HAMPTON, VIRGINIA SCALE: NOT TO SCALE



F.I.R.M. PANEL
HAMPTON, VIRGINIA SCALE: NOT TO SCALE

PHASE TWO AFFECTED PARCELS
PARCEL: ONE M
LRSN: 13004421
ADDRESS #: 1048 & 1050
OWNER: KB RIVERDALE, LLC
PARCEL: VON SCHILLING DRIVE
LRSN: 13004313
ADDRESS #: N/A
OWNER: KB RIVERDALE, LLC

*SEE SHEETS C-002A & C-002B



CITY CONTACT:

PLAN REVIEW & PERMITS
CITY OF HAMPTON
DEVELOPMENT SERVICES CENTER
22 LINCOLN ST., 3RD FLOOR
HAMPTON, VA 23669
(757) 728-2444

UTILITY CONTACTS:

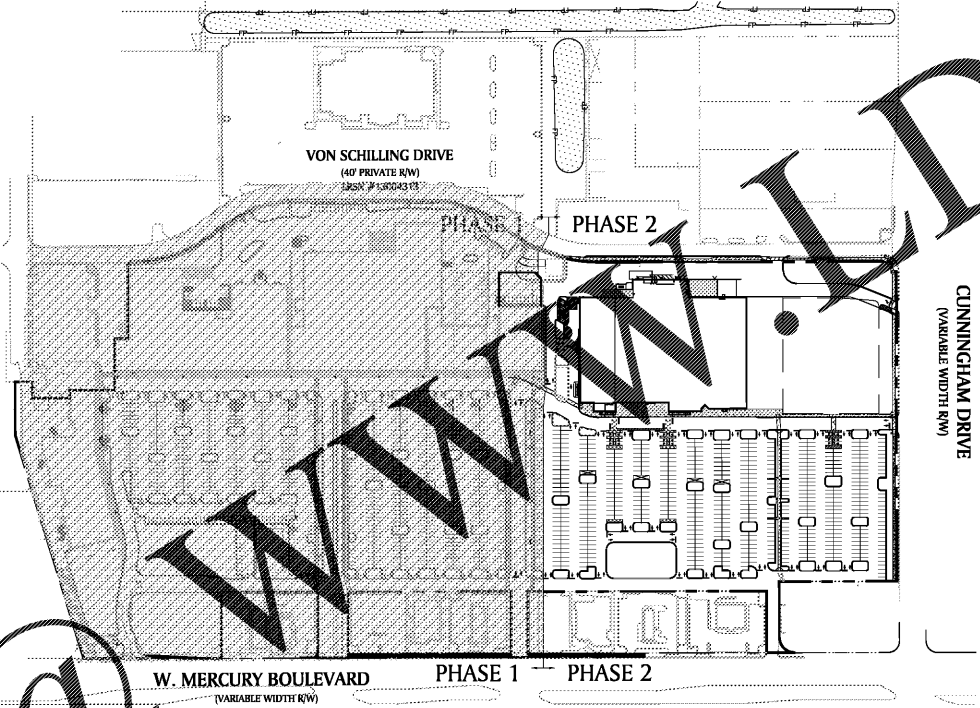
WATER & SEWER
NEWPORT NEWS WATER WORKS
KOFI A. BOATENG, P.E.
700 TOWN CENTER DRIVE
NEWPORT NEWS, VA 23606
(757) 926-1000

TELEPHONE
AT&T, INTERNET & PHONE
2170 COLISEUM DR., SUITE A
HAMPTON, VA 23666
(757) 262-1190
(800) 288-2020

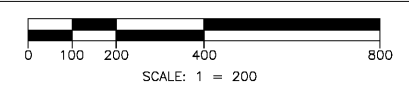
POWER
DOMINION VIRGINIA POWER
120 TREDGAR ST.
RICHMOND, VA 23219
(866) 366-4357

FIRE DEPARTMENT
CITY OF HAMPTON,
FIRE/RESCUE
DAVID E. LAYMAN, CHIEF
22 LINCOLN ST, 6TH FLOOR
HAMPTON, VA 23669
(757) 727-6580

NATURAL GAS
VIRGINIA NATURAL GAS
MS. MARCIE CALHOUN
HAMPTON, VA 23666
(757) 873-8215
MCALHOUN@AGLRESOURCES.COM



OVERALL SITE MAP



REVISION 1 APPROVAL:

APPROVED FOR THE CITY OF HAMPTON

APPROVED, DIRECTOR OF PUBLIC WORKS DATE

APPROVED, COMMUNITY DEVELOPMENT DEPT., CITY AGENT DATE

STORMWATER MANAGEMENT CODE COMPLIANCE DATA

SITE IS A REDEVELOPMENT

EXISTING BMP'S	FAR WESTERN PORTION OF PHASE DRAINS TO A WETPOND 1 CRYSTAL STREAM CRTASL CLEAN DEVICE
PROPOSED BMP'S	
GEOGRAPHIC LOCATION	HU CODE 020801080103-CB23
BMP OUTFALL	TIDE MILL CREEK
NUMBER OF ACRES TREATED	13.97 AC.
POLLUTANTS REMOVAL	5.01 LBS/YR
WATERSHED	SOUTHWEST BRANCH BLACK RIVER
LONGITUDE AND LATITUDE OF PROJECT SITE	LAT. = 37.042854 LONG. = 76.384202

- REVISION 1 SUMMARY (11/1/2018)
- REVISE KROGER FOOTPRINT TO 106,404 SF. SEE SHEETS C-100 - C-111.
 - REVISED PARKING ISLANDS ADJACENT TO FRONT OF KROGER BUILDING. SHIFTED HANDICAP PARKING SPACES TO ALIGN WITH NEW DOOR LOCATIONS. SEE SHEETS C-100 - C-111.
 - REVISE THE GRADING AND STORM DRAIN/ROOF DRAIN CONNECTIONS BASED ON THE KROGER FOOTPRINT. SEE SHEETS C-200 - C-210.
 - REVISE THE WATER AND SEWER CONNECTIONS BASED ON THE REVISED KROGER FOOTPRINT. SEE SHEETS C-200 - C-210.
 - REVISE EROSION CONTROL GRASSING AND INLET CONNECTIONS FOR NEW SITE REVISIONS. SEE SHEETS C-400, C-410, C-420, C-430.
 - REVISED STORM SEWER AND SANITARY SEWER STUBS AND MANHOLES BASED ON UPDATED KROGER FOOTPRINT, CONNECTIONS AND CLEANOUTS. SEE SHEETS C-520, C-521, & C-530.
 - REVISED THE WELL AND TRASH CHUTE FOR DETAILS. SEE SHEET C-612.
 - REVISED THE PLANTINGS FOR THE FIRELANDSCAPE ISLANDS ADJACENT TO THE FRONT OF THE REVISED KROGER FOOTPRINT. SEE SHEETS LA-110 - LA-112.
 - REVISED PHOTOMETRIC PLANS. SEE SHEETS C-702.

Sheet List Table

Sheet Number	Sheet Title	07.05.16	07.13.16	08.19.16	10.04.16	10.13.16	10.25.16	11.17.16	11.01.18
C-000	COVER	•	•	•	•	•	•	•	•
C-001	TRACKING SUMMARY	•	•	•	•	•	•	•	•
C-002	GENERAL NOTES	•	•	•	•	•	•	•	•
C-002A	PLAT OF PARCELS 1 OF 2 (BY OTHERS)	•	•	•	•	•	•	•	•
C-002B	PLAT OF PARCELS 2 OF 2 (BY OTHERS)	•	•	•	•	•	•	•	•
C-003	EXISTING CONDITIONS	•	•	•	•	•	•	•	•
C-004	DEMOLITION PLAN 3A	•	•	•	•	•	•	•	•
C-005	DEMOLITION PLAN 3B	•	•	•	•	•	•	•	•
C-100	OVERALL SITE PLAN	•	•	•	•	•	•	•	•
C-101	SITE PLAN 3A	•	•	•	•	•	•	•	•
C-111	SITE PLAN 3B	•	•	•	•	•	•	•	•
C-200	OVERALL GRADING PLAN	•	•	•	•	•	•	•	•
C-210	GRADING PLAN 3A	•	•	•	•	•	•	•	•
C-211	GRADING PLAN 3B	•	•	•	•	•	•	•	•
C-300	OVERALL UTILITY PLAN	•	•	•	•	•	•	•	•
C-310	UTILITY PLAN 3A	•	•	•	•	•	•	•	•
C-311	UTILITY PLAN 3B	•	•	•	•	•	•	•	•
C-320	SANITARY SEWER FORCEMAIN RELOCATION PLAN	•	•	•	•	•	•	•	•
C-400	EROSION CONTROL NARRATIVE	•	•	•	•	•	•	•	•
C-410	PHASE I EROSION CONTROL OVERALL	•	•	•	•	•	•	•	•
C-411	PHASE I EROSION CONTROL 3A	•	•	•	•	•	•	•	•
C-412	PHASE I EROSION CONTROL 3B	•	•	•	•	•	•	•	•
C-420	PHASE II EROSION CONTROL OVERALL	•	•	•	•	•	•	•	•
C-421	PHASE II EROSION CONTROL 3A	•	•	•	•	•	•	•	•
C-422	PHASE II EROSION CONTROL 3B	•	•	•	•	•	•	•	•
C-430	PHASE III EROSION CONTROL OVERALL	•	•	•	•	•	•	•	•
C-431	PHASE III EROSION CONTROL 3A	•	•	•	•	•	•	•	•
C-432	PHASE III EROSION CONTROL 3B	•	•	•	•	•	•	•	•
C-520	STORM PIPE PROFILES	•	•	•	•	•	•	•	•
C-521	STORM CHART	•	•	•	•	•	•	•	•
C-530	SANITARY SEWER PROFILES	•	•	•	•	•	•	•	•
C-531	WATER PROFILES	•	•	•	•	•	•	•	•
C-610	SITE DETAILS	•	•	•	•	•	•	•	•
C-611	SITE DETAILS	•	•	•	•	•	•	•	•
C-612	SITE DETAILS	•	•	•	•	•	•	•	•
C-613	SITE DETAILS	•	•	•	•	•	•	•	•
C-614	SITE DETAILS	•	•	•	•	•	•	•	•
C-615	SITE DETAILS	•	•	•	•	•	•	•	•
C-620	GRADING DETAILS	•	•	•	•	•	•	•	•
C-621	GRADING DETAILS	•	•	•	•	•	•	•	•
C-622	GRADING DETAILS	•	•	•	•	•	•	•	•
C-630	UTILITY DETAILS	•	•	•	•	•	•	•	•
C-631	UTILITY DETAILS	•	•	•	•	•	•	•	•
C-640	EROSION CONTROL DETAILS	•	•	•	•	•	•	•	•
C-641	EROSION CONTROL DETAILS	•	•	•	•	•	•	•	•
C-700	LIGHTING PLAN OVERALL (BY OTHERS)	•	•	•	•	•	•	•	•
C-701	LIGHTING PLAN PHASE 1 (BY OTHERS)	•	•	•	•	•	•	•	•
C-702	LIGHTING PLAN PHASE 2 (BY OTHERS)	•	•	•	•	•	•	•	•
LA-110	LANDSCAPE PLAN	•	•	•	•	•	•	•	•
LA-111	LANDSCAPE PLAN	•	•	•	•	•	•	•	•
LA-112	LANDSCAPE PLAN	•	•	•	•	•	•	•	•
LA-600	LANDSCAPE DETAILS AND NOTES	•	•	•	•	•	•	•	•

DEVELOPER: KB RIVERDALE, LLC

2743 PERIMETER PARKWAY
BLDG. 100, SUITE 370
AUGUSTA, GA 30909

24 HOUR CONTACT:
MARK SENN - MARK.SENN@SOUTHEASTERN.COMPANY

ENGINEER:



CONTACT:
MICHAEL E. LETSON, JR., PE
EMAIL: MLETSON@PAULSONMITCHELL.COM

LAND PLANNERS
ENGINEERS • SURVEYORS
TRANSPORTATION
LANDSCAPE ARCHITECTS

85-A MILL STREET
SUITE 200
ROSWELL, GEORGIA 30075

VOICE 770.650.7685
FAX 770.650.7684
www.paulsonmitchell.com

JOB NO:

2014169

ORIGINAL ISSUE DATE: 06.28.16

SITE PLAN NO: SP 2016-0020